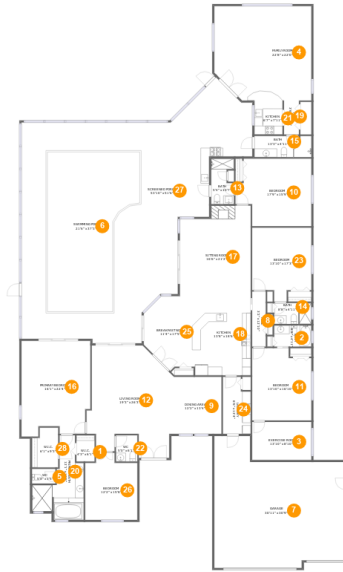


1299 Coverstone Court, East Lake Woodlands, East Lake, Oldsmar, Pinellas County, Florida,



Room Dimensions

Floor 1

Total sqft: 6574

Living area: 4204

#	Room name	Dimensions	Area (sqft)	Counted as Living Area
1	W.i.c.	4'3" x 6'1"	26 sq. ft	Yes
2	Bath	8'8" x 4'11"	43 sq. ft	Yes
3	Exercise Room	13'10" x 8'10"	122 sq. ft	Yes
4	Family Room	22'8" x 22'0"	477 sq. ft	Yes
5	Wc	5'5" x 3'5"	19 sq. ft	Yes
6	Swimming Pool	21'6" x 37'3"	651 sq. ft	No
7	Garage	30'11" x 30'9"	796 sq. ft	No
8	Hall	3'2" x 12'10"	41 sq. ft	Yes
9	Dining Area	12'2" x 13'4"	163 sq. ft	Yes
10	Bedroom	17'9" x 15'9"	248 sq. ft	Yes
11	Bedroom	13'10" x 16'10"	221 sq. ft	Yes

Scan captured on Sat, 07 Sep 2024 14:12:37 GMT

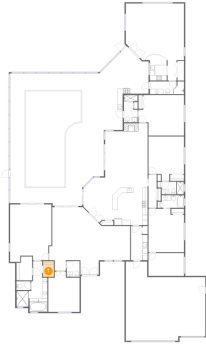
Information is calculated by CubiCasa technology; deemed highly reliable but not guaranteed.

**1299 Coverstone Court, East Lake Woodlands,
East Lake, Oldsmar, Pinellas County, Florida,**

#	Room name	Dimensions	Area (sqft)	Counted as Living Area
12	Living Room	19'3" x 26'3"	418 sq. ft	Yes
13	Bath	5'4" x 10'7"	51 sq. ft	Yes
14	Bath	8'8" x 4'11"	42 sq. ft	Yes
15	Bath	13'3" x 4'11"	65 sq. ft	Yes
16	Primary Bedroom	16'1" x 22'4"	335 sq. ft	Yes
17	Sitting Room	16'6" x 21'2"	326 sq. ft	Yes
18	Kitchen	13'8" x 18'6"	251 sq. ft	Yes
19	Hall	3'6" x 7'11"	28 sq. ft	Yes
20	Primary Bath	12'1" x 19'9"	142 sq. ft	Yes
21	Kitchen	6'7" x 7'11"	52 sq. ft	Yes
22	Wc	5'0" x 6'1"	30 sq. ft	Yes
23	Bedroom	13'10" x 17'3"	209 sq. ft	Yes
24	Laundry	6'6" x 13'4"	79 sq. ft	Yes
25	Breakfast Nook	11'4" x 17'5"	165 sq. ft	Yes
26	Bedroom	12'2" x 15'8"	172 sq. ft	Yes
27	Screened Porch	53'10" x 51'6"	2127 sq. ft	No
28	W.i.c.	6'1" x 9'3"	52 sq. ft	Yes

1299 Coverstone Court, East Lake Woodlands, East Lake, Oldsmar, Pinellas County, Florida,

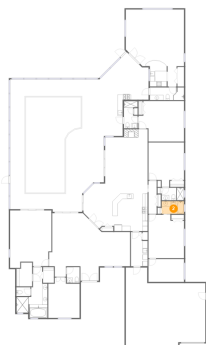
1 Floor 1 - W.i.c.



Dimensions: 4'3" x 6'1"
Area: 26 sq. ft
Counted as Living Area:
Yes

Heated: Yes
Finished: Yes
Enclosed: Yes
Contiguous:
Yes
Permitted: Yes
Wet Space: No
Addition: No
Conversion: No

2 Floor 1 - Bath

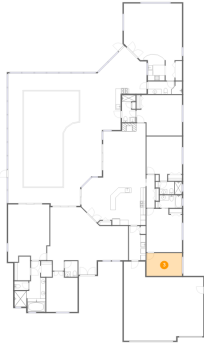


Dimensions: 8'8" x 4'11"
Area: 43 sq. ft
Counted as Living Area:
Yes

Heated: Yes
Finished: Yes
Enclosed: Yes
Contiguous:
Yes
Permitted: Yes
Wet Space: Yes
Addition: No
Conversion: No

1299 Coverstone Court, East Lake Woodlands, East Lake, Oldsmar, Pinellas County, Florida,

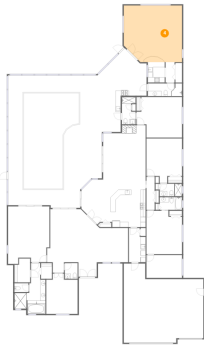
3 Floor 1 - Exercise Room



Dimensions: 13'10" x 8'10"
Area: 122 sq. ft
Counted as Living Area:
Yes

Heated: Yes
Finished: Yes
Enclosed: Yes
Contiguous:
Yes
Permitted: Yes
Wet Space: No
Addition: No
Conversion: No

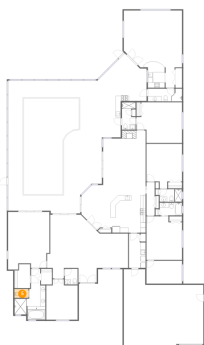
4 Floor 1 - Family Room



Dimensions: 22'8" x 22'0"
Area: 477 sq. ft
Counted as Living Area:
Yes

Heated: Yes
Finished: Yes
Enclosed: Yes
Contiguous:
Yes
Permitted: Yes
Wet Space: No
Addition: No
Conversion: No

5 Floor 1 - Wc

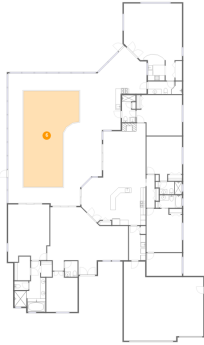


Dimensions: 5'5" x 3'5"
Area: 19 sq. ft
Counted as Living Area:
Yes

Heated: Yes
Finished: Yes
Enclosed: Yes
Contiguous:
Yes
Permitted: Yes
Wet Space: Yes
Addition: No
Conversion: No

1299 Coverstone Court, East Lake Woodlands, East Lake, Oldsmar, Pinellas County, Florida,

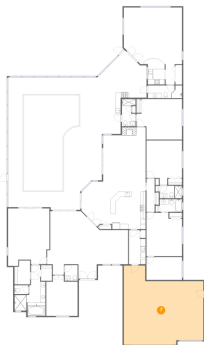
6 Floor 1 - Swimming Pool



Dimensions: 21'6" x 37'3"
Area: 651 sq. ft
Counted as Living Area: No

Heated: No
Finished: No
Enclosed: No
Contiguous: Yes
Permitted: No
Wet Space: No
Addition: No
Conversion: No

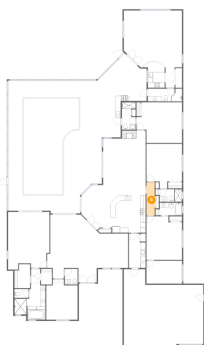
7 Floor 1 - Garage



Dimensions: 30'11" x 30'9"
Area: 796 sq. ft
Counted as Living Area: No

Heated: No
Finished: No
Enclosed: Yes
Contiguous: Yes
Permitted: Yes
Wet Space: No
Addition: No
Conversion: No

8 Floor 1 - Hall

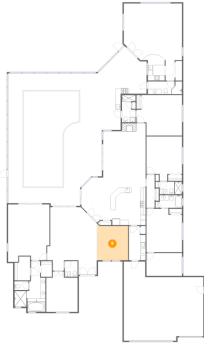


Dimensions: 3'2" x 12'10"
Area: 41 sq. ft
Counted as Living Area:
Yes

Heated: Yes
Finished: Yes
Enclosed: Yes
Contiguous:
Yes
Permitted: Yes
Wet Space: No
Addition: No
Conversion: No

1299 Coverstone Court, East Lake Woodlands, East Lake, Oldsmar, Pinellas County, Florida,

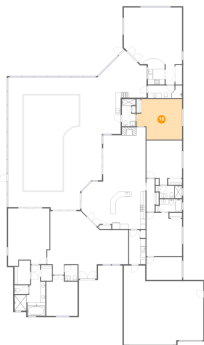
9 Floor 1 - Dining Area



Dimensions: 12'2" x 13'4"
Area: 163 sq. ft
Counted as Living Area:
Yes

Heated: Yes
Finished: Yes
Enclosed: Yes
Contiguous:
Yes
Permitted: Yes
Wet Space: No
Addition: No
Conversion: No

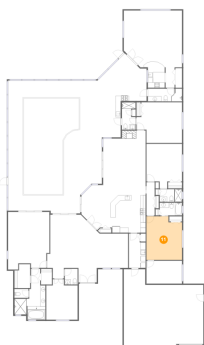
10 Floor 1 - Bedroom



Dimensions: 17'9" x 15'9"
Area: 248 sq. ft
Counted as Living Area:
Yes

Heated: Yes
Finished: Yes
Enclosed: Yes
Contiguous:
Yes
Permitted: Yes
Wet Space: No
Addition: No
Conversion: No

11 Floor 1 - Bedroom

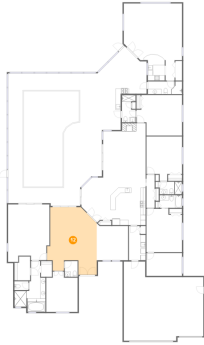


Dimensions: 13'10" x 16'10"
Area: 221 sq. ft
Counted as Living Area:
Yes

Heated: Yes
Finished: Yes
Enclosed: Yes
Contiguous:
Yes
Permitted: Yes
Wet Space: No
Addition: No
Conversion: No

1299 Coverstone Court, East Lake Woodlands, East Lake, Oldsmar, Pinellas County, Florida,

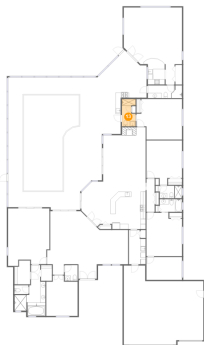
12 Floor 1 - Living Room



Dimensions: 19'3" x 26'3"
Area: 418 sq. ft
Counted as Living Area:
Yes

Heated: Yes
Finished: Yes
Enclosed: Yes
Contiguous:
Yes
Permitted: Yes
Wet Space: No
Addition: No
Conversion: No

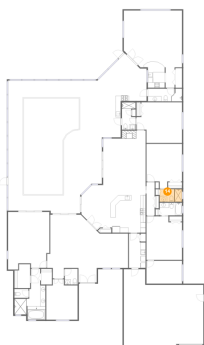
13 Floor 1 - Bath



Dimensions: 5'4" x 10'7"
Area: 51 sq. ft
Counted as Living Area:
Yes

Heated: Yes
Finished: Yes
Enclosed: Yes
Contiguous:
Yes
Permitted: Yes
Wet Space: Yes
Addition: No
Conversion: No

14 Floor 1 - Bath

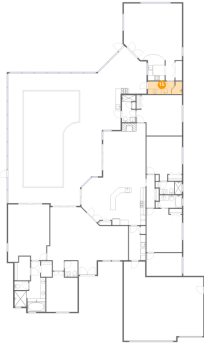


Dimensions: 8'8" x 4'11"
Area: 42 sq. ft
Counted as Living Area:
Yes

Heated: Yes
Finished: Yes
Enclosed: Yes
Contiguous:
Yes
Permitted: Yes
Wet Space: Yes
Addition: No
Conversion: No

1299 Coverstone Court, East Lake Woodlands, East Lake, Oldsmar, Pinellas County, Florida,

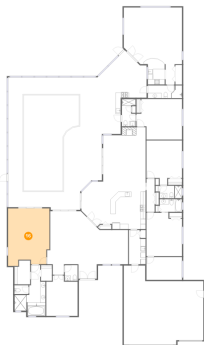
15 Floor 1 - Bath



Dimensions: 13'3" x 4'11"
Area: 65 sq. ft
Counted as Living Area:
Yes

Heated: Yes
Finished: Yes
Enclosed: Yes
Contiguous:
Yes
Permitted: Yes
Wet Space: Yes
Addition: No
Conversion: No

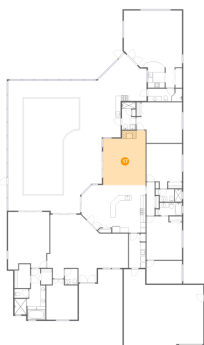
16 Floor 1 - Primary Bedroom



Dimensions: 16'1" x 22'4"
Area: 335 sq. ft
Counted as Living Area:
Yes

Heated: Yes
Finished: Yes
Enclosed: Yes
Contiguous:
Yes
Permitted: Yes
Wet Space: No
Addition: No
Conversion: No

17 Floor 1 - Sitting Room

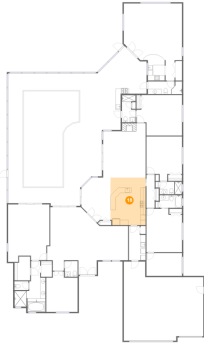


Dimensions: 16'6" x 21'2"
Area: 326 sq. ft
Counted as Living Area:
Yes

Heated: Yes
Finished: Yes
Enclosed: Yes
Contiguous:
Yes
Permitted: Yes
Wet Space: No
Addition: No
Conversion: No

1299 Coverstone Court, East Lake Woodlands, East Lake, Oldsmar, Pinellas County, Florida,

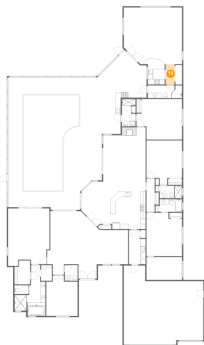
18 Floor 1 - Kitchen



Dimensions: 13'8" x 18'6"
Area: 251 sq. ft
Counted as Living Area:
Yes

Heated: Yes
Finished: Yes
Enclosed: Yes
Contiguous:
Yes
Permitted: Yes
Wet Space: No
Addition: No
Conversion: No

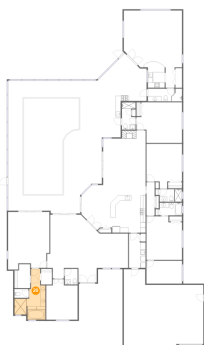
19 Floor 1 - Hall



Dimensions: 3'6" x 7'11"
Area: 28 sq. ft
Counted as Living Area:
Yes

Heated: Yes
Finished: Yes
Enclosed: Yes
Contiguous:
Yes
Permitted: Yes
Wet Space: No
Addition: No
Conversion: No

20 Floor 1 - Primary Bath

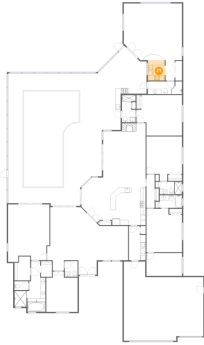


Dimensions: 12'1" x 19'9"
Area: 142 sq. ft
Counted as Living Area:
Yes

Heated: Yes
Finished: Yes
Enclosed: Yes
Contiguous:
Yes
Permitted: Yes
Wet Space: Yes
Addition: No
Conversion: No

1299 Coverstone Court, East Lake Woodlands, East Lake, Oldsmar, Pinellas County, Florida,

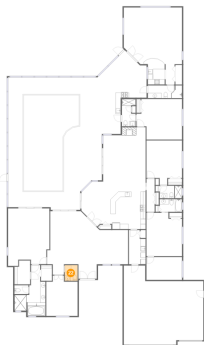
21 Floor 1 - Kitchen



Dimensions: 6'7" x 7'11"
Area: 52 sq. ft
Counted as Living Area:
Yes

Heated: Yes
Finished: Yes
Enclosed: Yes
Contiguous:
Yes
Permitted: Yes
Wet Space: No
Addition: No
Conversion: No

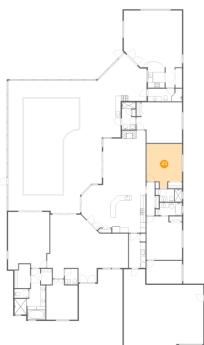
22 Floor 1 - Wc



Dimensions: 5'0" x 6'1"
Area: 30 sq. ft
Counted as Living Area:
Yes

Heated: Yes
Finished: Yes
Enclosed: Yes
Contiguous:
Yes
Permitted: Yes
Wet Space: Yes
Addition: No
Conversion: No

23 Floor 1 - Bedroom

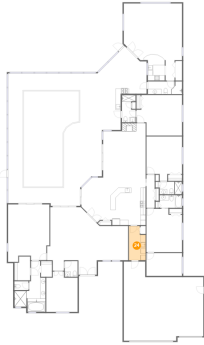


Dimensions: 13'10" x 17'3"
Area: 209 sq. ft
Counted as Living Area:
Yes

Heated: Yes
Finished: Yes
Enclosed: Yes
Contiguous:
Yes
Permitted: Yes
Wet Space: No
Addition: No
Conversion: No

1299 Coverstone Court, East Lake Woodlands, East Lake, Oldsmar, Pinellas County, Florida,

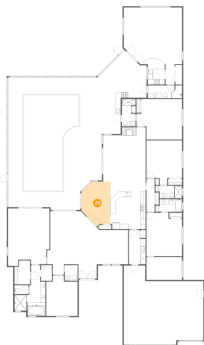
24 Floor 1 - Laundry



Dimensions: 6'6" x 13'4"
Area: 79 sq. ft
Counted as Living Area:
Yes

Heated: Yes
Finished: Yes
Enclosed: Yes
Contiguous:
Yes
Permitted: Yes
Wet Space: No
Addition: No
Conversion: No

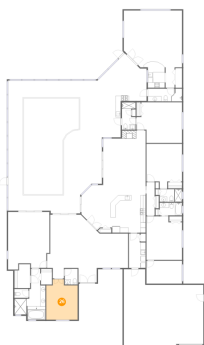
25 Floor 1 - Breakfast Nook



Dimensions: 11'4" x 17'5"
Area: 165 sq. ft
Counted as Living Area:
Yes

Heated: Yes
Finished: Yes
Enclosed: Yes
Contiguous:
Yes
Permitted: Yes
Wet Space: No
Addition: No
Conversion: No

26 Floor 1 - Bedroom

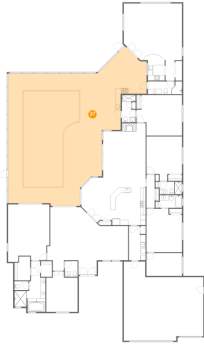


Dimensions: 12'2" x 15'8"
Area: 172 sq. ft
Counted as Living Area:
Yes

Heated: Yes
Finished: Yes
Enclosed: Yes
Contiguous:
Yes
Permitted: Yes
Wet Space: No
Addition: No
Conversion: No

1299 Coverstone Court, East Lake Woodlands, East Lake, Oldsmar, Pinellas County, Florida,

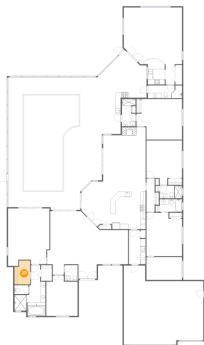
27 Floor 1 - Screened Porch



Dimensions: 53'10" x 51'6"
Area: 2127 sq. ft
Counted as Living Area: No

Heated: No
Finished: Yes
Enclosed: No
Contiguous: Yes
Permitted: Yes
Wet Space: No
Addition: No
Conversion: No

28 Floor 1 - W.i.c.



Dimensions: 6'1" x 9'3"
Area: 52 sq. ft
Counted as Living Area:
Yes

Heated: Yes
Finished: Yes
Enclosed: Yes
Contiguous:
Yes
Permitted: Yes
Wet Space: No
Addition: No
Conversion: No