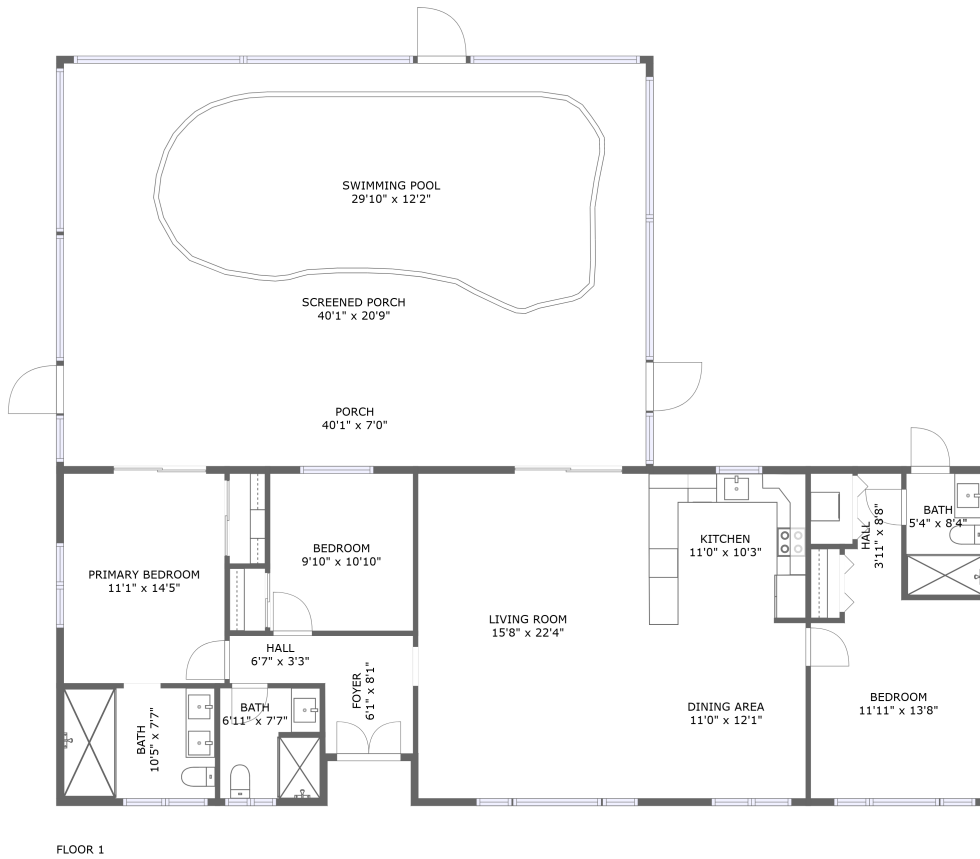






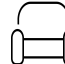
245 78th Avenue North, Fossil Park, St. Petersburg, Pinellas County, Florida, United



Property Summary

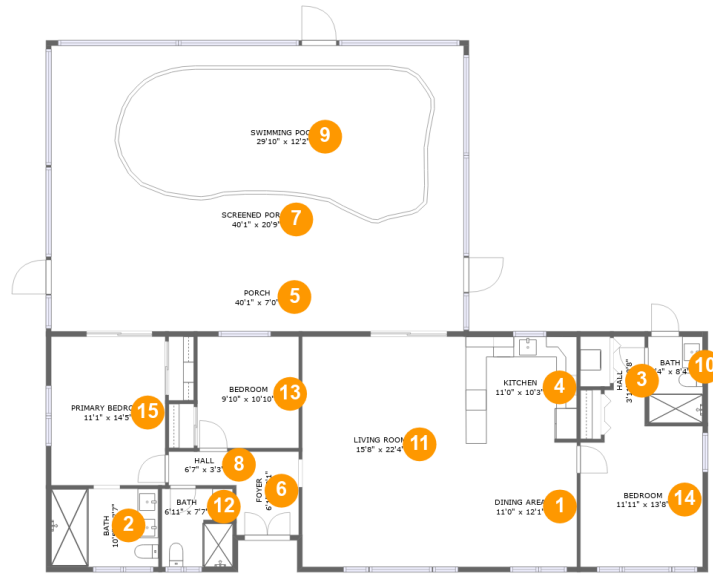
 **0** garages  **3** bedrooms  **3** bathrooms  **0** half baths

 **1** floors

 **1,492** Gross Living Area sqft

 **2,263** total sqft

245 78th Avenue North, Fossil Park, St. Petersburg, Pinellas County, Florida, United



Room Dimensions

Floor 1

Total sqft: 2263

Living area: 1492

#	Room name	Dimensions	Area (sqft)	Counted as Living Area
1	Dining Area	11'0" x 12'1"	133 sq. ft	Yes
2	Bath	10'5" x 7'7"	79 sq. ft	Yes
3	Hall	3'11" x 8'8"	29 sq. ft	Yes
4	Kitchen	11'0" x 10'3"	112 sq. ft	Yes
5	Porch	40'1" x 7'0"	280 sq. ft	No
6	Foyer	6'1" x 8'1"	49 sq. ft	Yes
7	Screened Porch	40'1" x 20'9"	833 sq. ft	No
8	Hall	6'7" x 3'3"	22 sq. ft	Yes
9	Swimming Pool	29'10" x 12'2"	383 sq. ft	No
10	Bath	5'4" x 8'4"	44 sq. ft	Yes
11	Living Room	15'8" x 22'4"	351 sq. ft	Yes

Scan captured on Thu, 19 Sep 2024 16:09:55 GMT

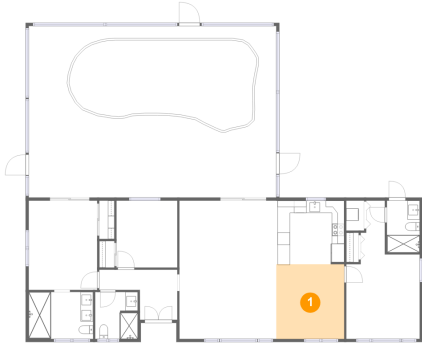
Information is calculated by CubiCasa technology; deemed highly reliable but not guaranteed.

**245 78th Avenue North, Fossil Park, St.
Petersburg, Pinellas County, Florida, United**

#	Room name	Dimensions	Area (sqft)	Counted as Living Area
12	Bath	6'11" x 7'7"	51 sq. ft	Yes
13	Bedroom	9'10" x 10'10"	107 sq. ft	Yes
14	Bedroom	11'11" x 13'8"	159 sq. ft	Yes
15	Primary Bedroom	11'1" x 14'5"	160 sq. ft	Yes

245 78th Avenue North, Fossil Park, St. Petersburg, Pinellas County, Florida, United

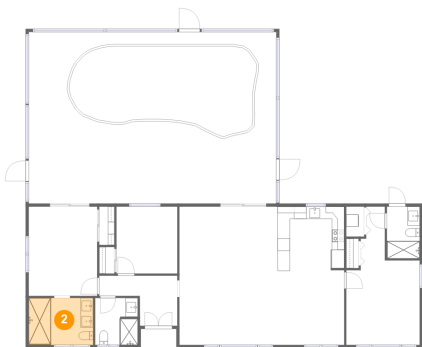
1 Floor 1 - Dining Area



Dimensions: 11'0" x 12'1"
Area: 133 sq. ft
Counted as Living Area:
Yes

Heated: Yes
Finished: Yes
Enclosed: Yes
Contiguous:
Yes
Permitted: Yes
Wet Space: No
Addition: No
Conversion: No

2 Floor 1 - Bath

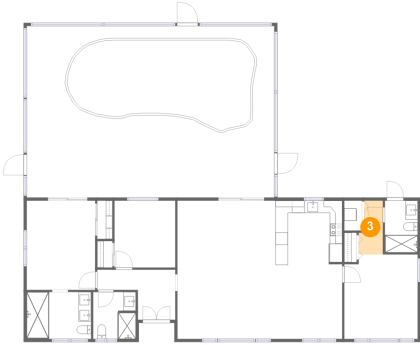


Dimensions: 10'5" x 7'7"
Area: 79 sq. ft
Counted as Living Area:
Yes

Heated: Yes
Finished: Yes
Enclosed: Yes
Contiguous:
Yes
Permitted: Yes
Wet Space: Yes
Addition: No
Conversion: No

245 78th Avenue North, Fossil Park, St. Petersburg, Pinellas County, Florida, United

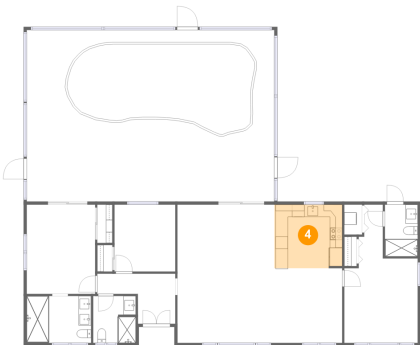
3 Floor 1 - Hall



Dimensions: 3'11" x 8'8"
Area: 29 sq. ft
Counted as Living Area:
Yes

Heated: Yes
Finished: Yes
Enclosed: Yes
Contiguous:
Yes
Permitted: Yes
Wet Space: No
Addition: No
Conversion: No

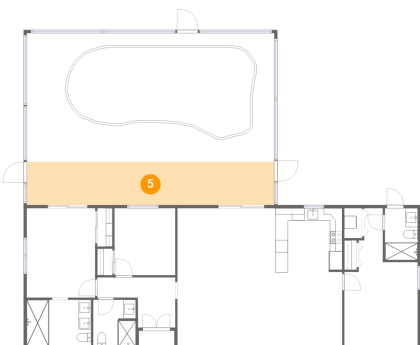
4 Floor 1 - Kitchen



Dimensions: 11'0" x 10'3"
Area: 112 sq. ft
Counted as Living Area:
Yes

Heated: Yes
Finished: Yes
Enclosed: Yes
Contiguous:
Yes
Permitted: Yes
Wet Space: No
Addition: No
Conversion: No

5 Floor 1 - Porch

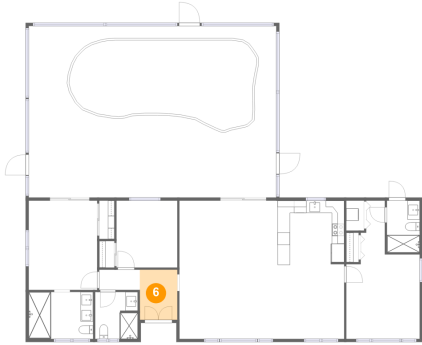


Dimensions: 40'1" x 7'0"
Area: 280 sq. ft
Counted as Living Area: No

Heated: No
Finished: Yes
Enclosed: No
Contiguous: Yes
Permitted: Yes
Wet Space: No
Addition: No
Conversion: No

245 78th Avenue North, Fossil Park, St. Petersburg, Pinellas County, Florida, United

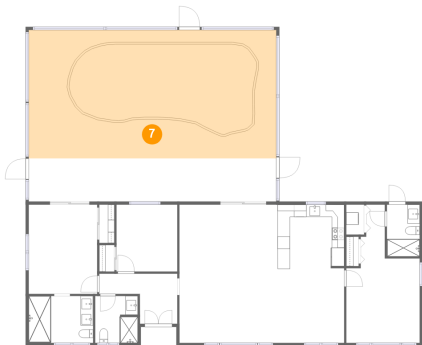
6 Floor 1 - Foyer



Dimensions: 6'1" x 8'1"
Area: 49 sq. ft
Counted as Living Area:
Yes

Heated: Yes
Finished: Yes
Enclosed: Yes
Contiguous:
Yes
Permitted: Yes
Wet Space: No
Addition: No
Conversion: No

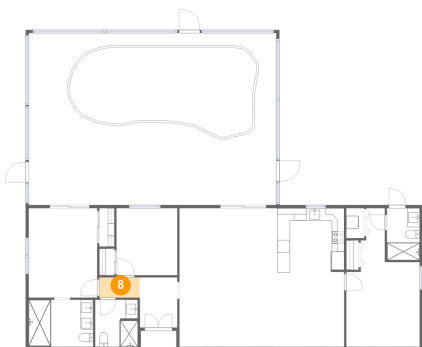
7 Floor 1 - Screened Porch



Dimensions: 40'1" x 20'9"
Area: 833 sq. ft
Counted as Living Area: No

Heated: No
Finished: Yes
Enclosed: No
Contiguous: Yes
Permitted: Yes
Wet Space: No
Addition: No
Conversion: No

8 Floor 1 - Hall

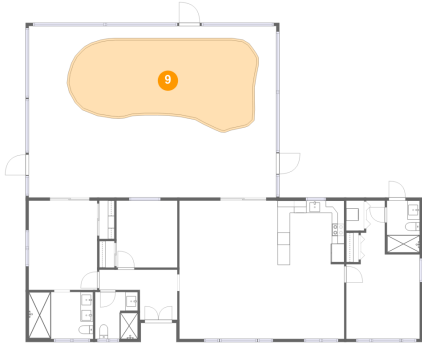


Dimensions: 6'7" x 3'3"
Area: 22 sq. ft
Counted as Living Area:
Yes

Heated: Yes
Finished: Yes
Enclosed: Yes
Contiguous:
Yes
Permitted: Yes
Wet Space: No
Addition: No
Conversion: No

245 78th Avenue North, Fossil Park, St. Petersburg, Pinellas County, Florida, United

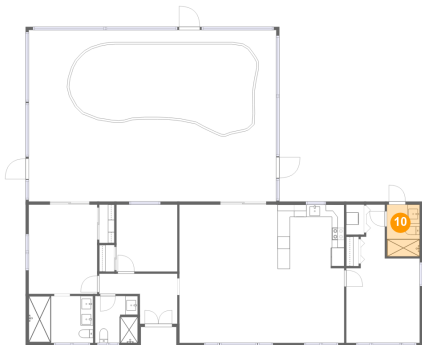
9 Floor 1 - Swimming Pool



Dimensions: 29'10" x 12'2"
Area: 383 sq. ft
Counted as Living Area: No

Heated: No
Finished: No
Enclosed: No
Contiguous: Yes
Permitted: No
Wet Space: No
Addition: No
Conversion: No

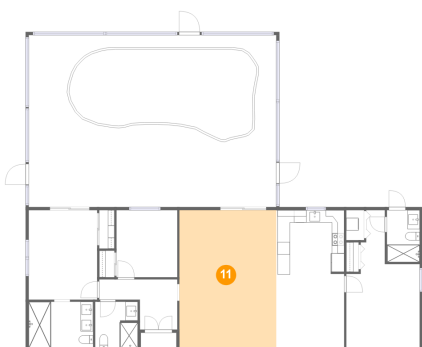
10 Floor 1 - Bath



Dimensions: 5'4" x 8'4"
Area: 44 sq. ft
Counted as Living Area: Yes

Heated: Yes
Finished: Yes
Enclosed: Yes
Contiguous: Yes
Permitted: Yes
Wet Space: Yes
Addition: No
Conversion: No

11 Floor 1 - Living Room

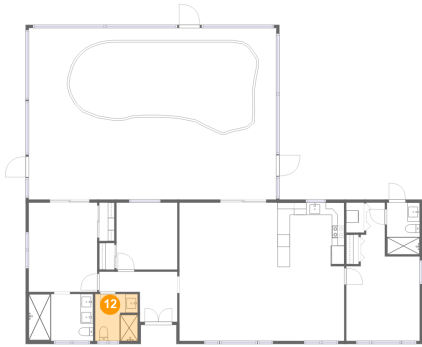


Dimensions: 15'8" x 22'4"
Area: 351 sq. ft
Counted as Living Area: Yes

Heated: Yes
Finished: Yes
Enclosed: Yes
Contiguous: Yes
Permitted: Yes
Wet Space: No
Addition: No
Conversion: No

245 78th Avenue North, Fossil Park, St. Petersburg, Pinellas County, Florida, United

12 Floor 1 - Bath



Dimensions: 6'11" x 7'7"
Area: 51 sq. ft
Counted as Living Area:
Yes

Heated: Yes
Finished: Yes
Enclosed: Yes
Contiguous:
Yes
Permitted: Yes
Wet Space: Yes
Addition: No
Conversion: No

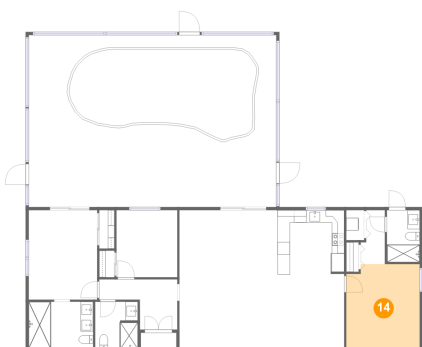
13 Floor 1 - Bedroom



Dimensions: 9'10" x 10'10"
Area: 107 sq. ft
Counted as Living Area:
Yes

Heated: Yes
Finished: Yes
Enclosed: Yes
Contiguous:
Yes
Permitted: Yes
Wet Space: No
Addition: No
Conversion: No

14 Floor 1 - Bedroom

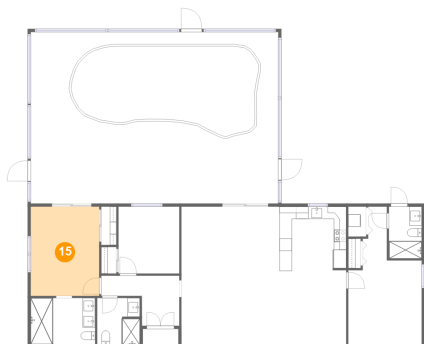


Dimensions: 11'11" x 13'8"
Area: 159 sq. ft
Counted as Living Area:
Yes

Heated: Yes
Finished: Yes
Enclosed: Yes
Contiguous:
Yes
Permitted: Yes
Wet Space: No
Addition: No
Conversion: No

**245 78th Avenue North, Fossil Park, St.
Petersburg, Pinellas County, Florida, United**

15 Floor 1 - Primary Bedroom



Dimensions: 11'1" x 14'5"
Area: 160 sq. ft
Counted as Living Area:
Yes

Heated: Yes
Finished: Yes
Enclosed: Yes
Contiguous:
Yes
Permitted: Yes
Wet Space: No
Addition: No
Conversion: No