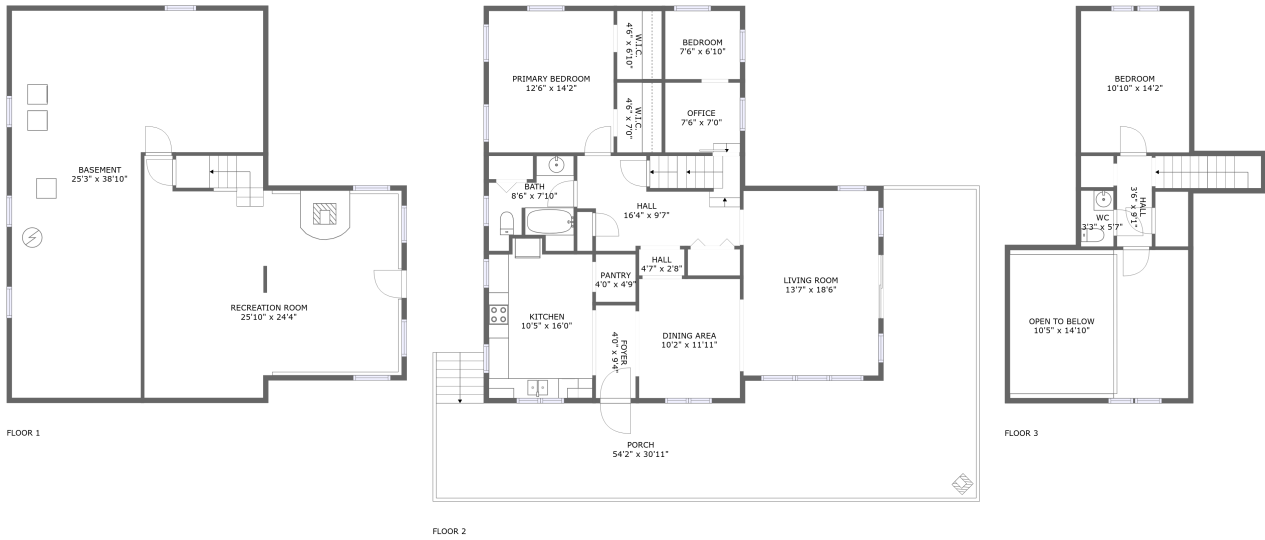


Home Data Report

161 Meade Road, Fairfax, Franklin County, Vermont, United States, 05454



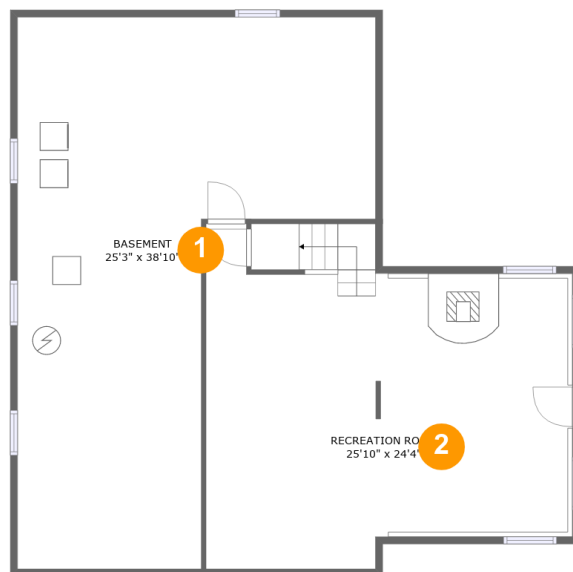
Property Summary

0 garages **3** bedrooms **1** bathrooms **0** half baths

3 floors **1,649** Gross Living Area sqft **3,991** total sqft

Home Data Report

**161 Meade Road, Fairfax, Franklin County,
Vermont, United States, 05454**



Room Dimensions

Floor 1

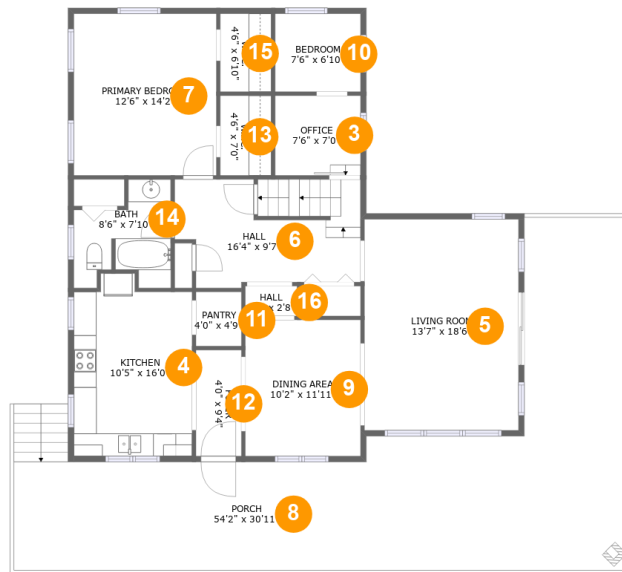
Total sqft: 1316

Living area: 0

#	Room name	Dimensions	Area (sqft)	Counted as Living Area
1	Basement	25'3" x 38'10"	677 sq. ft	No
2	Recreation Room	25'10" x 24'4"	545 sq. ft	No

Home Data Report

**161 Meade Road, Fairfax, Franklin County,
Vermont, United States, 05454**



Room Dimensions

Floor 2

Total sqft: 2061

Living area: 1315

#	Room name	Dimensions	Area (sqft)	Counted as Living Area
3	Office	7'6" x 7'0"	53 sq. ft	Yes
4	Kitchen	10'5" x 16'0"	155 sq. ft	Yes
5	Living Room	13'7" x 18'6"	251 sq. ft	Yes
6	Hall	16'4" x 9'7"	139 sq. ft	Yes
7	Primary Bedroom	12'6" x 14'2"	178 sq. ft	Yes
8	Porch	54'2" x 30'11"	746 sq. ft	No
9	Dining Area	10'2" x 11'11"	121 sq. ft	Yes
10	Bedroom	7'6" x 6'10"	51 sq. ft	Yes
11	Pantry	4'0" x 4'9"	19 sq. ft	Yes
12	Foyer	4'0" x 9'4"	37 sq. ft	Yes
13	W.i.c.	4'6" x 7'0"	31 sq. ft	Yes

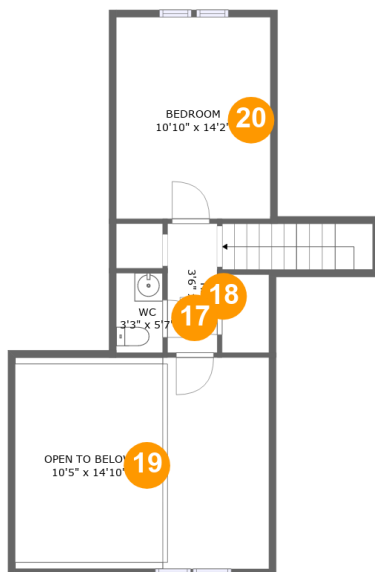
Home Data Report

**161 Meade Road, Fairfax, Franklin County,
Vermont, United States, 05454**

#	Room name	Dimensions	Area (sqft)	Counted as Living Area
14	Bath	8'6" x 7'10"	62 sq. ft	Yes
15	W.i.c.	4'6" x 6'10"	31 sq. ft	Yes
16	Hall	4'7" x 2'8"	12 sq. ft	Yes

Home Data Report

**161 Meade Road, Fairfax, Franklin County,
Vermont, United States, 05454**



Room Dimensions

Floor 3

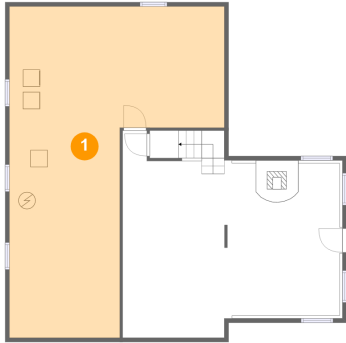
Total sqft: 614

Living area: 334

#	Room name	Dimensions	Area (sqft)	Counted as Living Area
17	Wc	3'3" x 5'7"	13 sq. ft	Yes
18	Hall	3'6" x 9'1"	32 sq. ft	No
19	Open To Below	10'5" x 14'10"	155 sq. ft	No
20	Bedroom	10'10" x 14'2"	126 sq. ft	Yes

**161 Meade Road, Fairfax, Franklin County,
Vermont, United States, 05454**

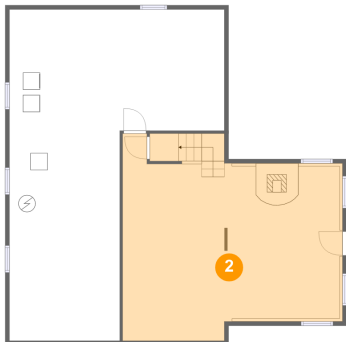
1 Floor 1 - Basement



Dimensions: 25'3" x 38'10"
Area: 677 sq. ft
Counted as Living Area: No

Heated: No
Finished: No
Enclosed: Yes
Contiguous: Yes
Permitted: Yes
Wet Space: No
Addition: No
Conversion: No

2 Floor 1 - Recreation Room

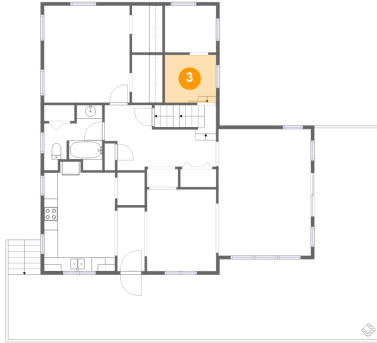


Dimensions: 25'10" x 24'4"
Area: 545 sq. ft
Counted as Living Area: No

Heated: Yes
Finished: Yes
Enclosed: Yes
Contiguous: No
Permitted: Yes
Wet Space: No
Addition: No
Conversion: No

**161 Meade Road, Fairfax, Franklin County,
Vermont, United States, 05454**

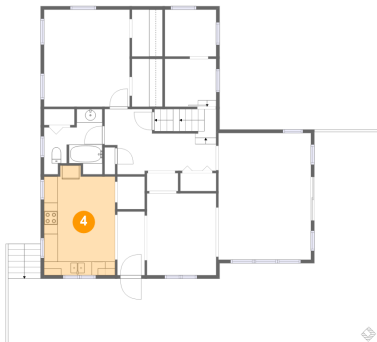
3 Floor 2 - Office



Dimensions: 7'6" x 7'0"
Area: 53 sq. ft
Counted as Living Area:
Yes

Heated: Yes
Finished: Yes
Enclosed: Yes
Contiguous:
Yes
Permitted: Yes
Wet Space: No
Addition: No
Conversion: No

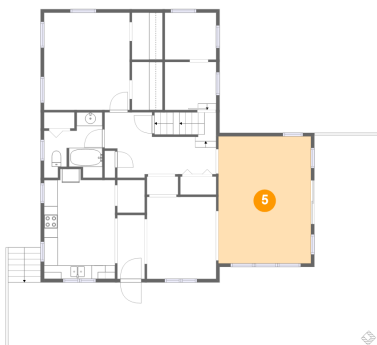
4 Floor 2 - Kitchen



Dimensions: 10'5" x 16'0"
Area: 155 sq. ft
Counted as Living Area:
Yes

Heated: Yes
Finished: Yes
Enclosed: Yes
Contiguous:
Yes
Permitted: Yes
Wet Space: No
Addition: No
Conversion: No

5 Floor 2 - Living Room



Dimensions: 13'7" x 18'6"
Area: 251 sq. ft
Counted as Living Area:
Yes

Heated: Yes
Finished: Yes
Enclosed: Yes
Contiguous:
Yes
Permitted: Yes
Wet Space: No
Addition: No
Conversion: No

**161 Meade Road, Fairfax, Franklin County,
Vermont, United States, 05454**

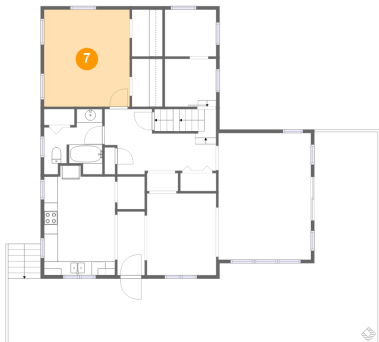
6 Floor 2 - Hall



Dimensions: 16'4" x 9'7"
Area: 139 sq. ft
Counted as Living Area:
Yes

Heated: Yes
Finished: Yes
Enclosed: Yes
Contiguous:
Yes
Permitted: Yes
Wet Space: No
Addition: No
Conversion: No

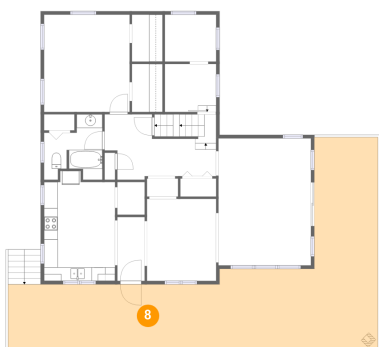
7 Floor 2 - Primary Bedroom



Dimensions: 12'6" x 14'2"
Area: 178 sq. ft
Counted as Living Area:
Yes

Heated: Yes
Finished: Yes
Enclosed: Yes
Contiguous:
Yes
Permitted: Yes
Wet Space: No
Addition: No
Conversion: No

8 Floor 2 - Porch



Dimensions: 54'2" x 30'11"
Area: 746 sq. ft
Counted as Living Area: No

Heated: No
Finished: Yes
Enclosed: No
Contiguous: Yes
Permitted: Yes
Wet Space: No
Addition: No
Conversion: No

**161 Meade Road, Fairfax, Franklin County,
Vermont, United States, 05454**

9 Floor 2 - Dining Area



Dimensions: 10'2" x 11'11"
Area: 121 sq. ft
Counted as Living Area:
Yes

Heated: Yes
Finished: Yes
Enclosed: Yes
Contiguous:
Yes
Permitted: Yes
Wet Space: No
Addition: No
Conversion: No

10 Floor 2 - Bedroom



Dimensions: 7'6" x 6'10"
Area: 51 sq. ft
Counted as Living Area:
Yes

Heated: Yes
Finished: Yes
Enclosed: Yes
Contiguous:
Yes
Permitted: Yes
Wet Space: No
Addition: No
Conversion: No

11 Floor 2 - Pantry



Dimensions: 4'0" x 4'9"
Area: 19 sq. ft
Counted as Living Area:
Yes

Heated: Yes
Finished: Yes
Enclosed: Yes
Contiguous:
Yes
Permitted: Yes
Wet Space: No
Addition: No
Conversion: No

**161 Meade Road, Fairfax, Franklin County,
Vermont, United States, 05454**

12 Floor 2 - Foyer



Dimensions: 4'0" x 9'4"
Area: 37 sq. ft
Counted as Living Area:
Yes

Heated: Yes
Finished: Yes
Enclosed: Yes
Contiguous:
Yes
Permitted: Yes
Wet Space: No
Addition: No
Conversion: No

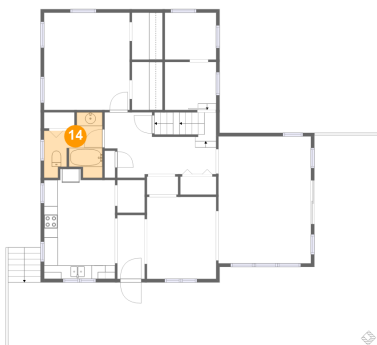
13 Floor 2 - W.i.c.



Dimensions: 4'6" x 7'0"
Area: 31 sq. ft
Counted as Living Area:
Yes

Heated: Yes
Finished: Yes
Enclosed: Yes
Contiguous:
Yes
Permitted: Yes
Wet Space: No
Addition: No
Conversion: No

14 Floor 2 - Bath



Dimensions: 8'6" x 7'10"
Area: 62 sq. ft
Counted as Living Area:
Yes

Heated: Yes
Finished: Yes
Enclosed: Yes
Contiguous:
Yes
Permitted: Yes
Wet Space: Yes
Addition: No
Conversion: No

**161 Meade Road, Fairfax, Franklin County,
Vermont, United States, 05454**

15 Floor 2 - W.i.c.



Dimensions: 4'6" x 6'10"
Area: 31 sq. ft
Counted as Living Area:
Yes

Heated: Yes
Finished: Yes
Enclosed: Yes
Contiguous:
Yes
Permitted: Yes
Wet Space: No
Addition: No
Conversion: No

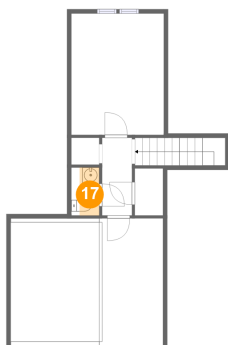
16 Floor 2 - Hall



Dimensions: 4'7" x 2'8"
Area: 12 sq. ft
Counted as Living Area:
Yes

Heated: Yes
Finished: Yes
Enclosed: Yes
Contiguous:
Yes
Permitted: Yes
Wet Space: No
Addition: No
Conversion: No

17 Floor 3 - Wc

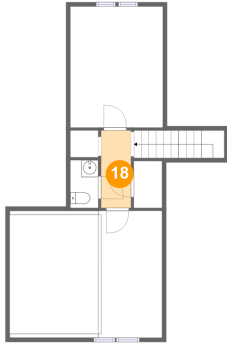


Dimensions: 3'3" x 5'7"
Area: 13 sq. ft
Counted as Living Area:
Yes

Heated: Yes
Finished: Yes
Enclosed: Yes
Contiguous:
Yes
Permitted: Yes
Wet Space: Yes
Addition: No
Conversion: No

**161 Meade Road, Fairfax, Franklin County,
Vermont, United States, 05454**

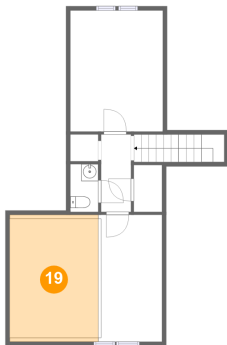
18 Floor 3 - Hall



Dimensions: 3'6" x 9'1"
Area: 32 sq. ft
Counted as Living Area: No

Heated: Yes
Finished: Yes
Enclosed: Yes
Contiguous: Yes
Permitted: Yes
Wet Space: No
Addition: No
Conversion: No

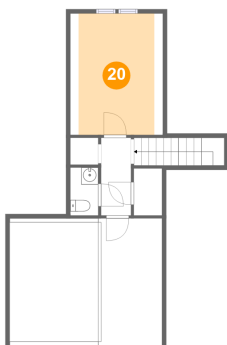
19 Floor 3 - Open To Below



Dimensions: 10'5" x 14'10"
Area: 155 sq. ft
Counted as Living Area: No

Heated: No
Finished: No
Enclosed: No
Contiguous: Yes
Permitted: No
Wet Space: No
Addition: No
Conversion: No

20 Floor 3 - Bedroom



Dimensions: 10'10" x 14'2"
Area: 126 sq. ft
Counted as Living Area:
Yes

Heated: Yes
Finished: Yes
Enclosed: Yes
Contiguous:
Yes
Permitted: Yes
Wet Space: No
Addition: No
Conversion: No