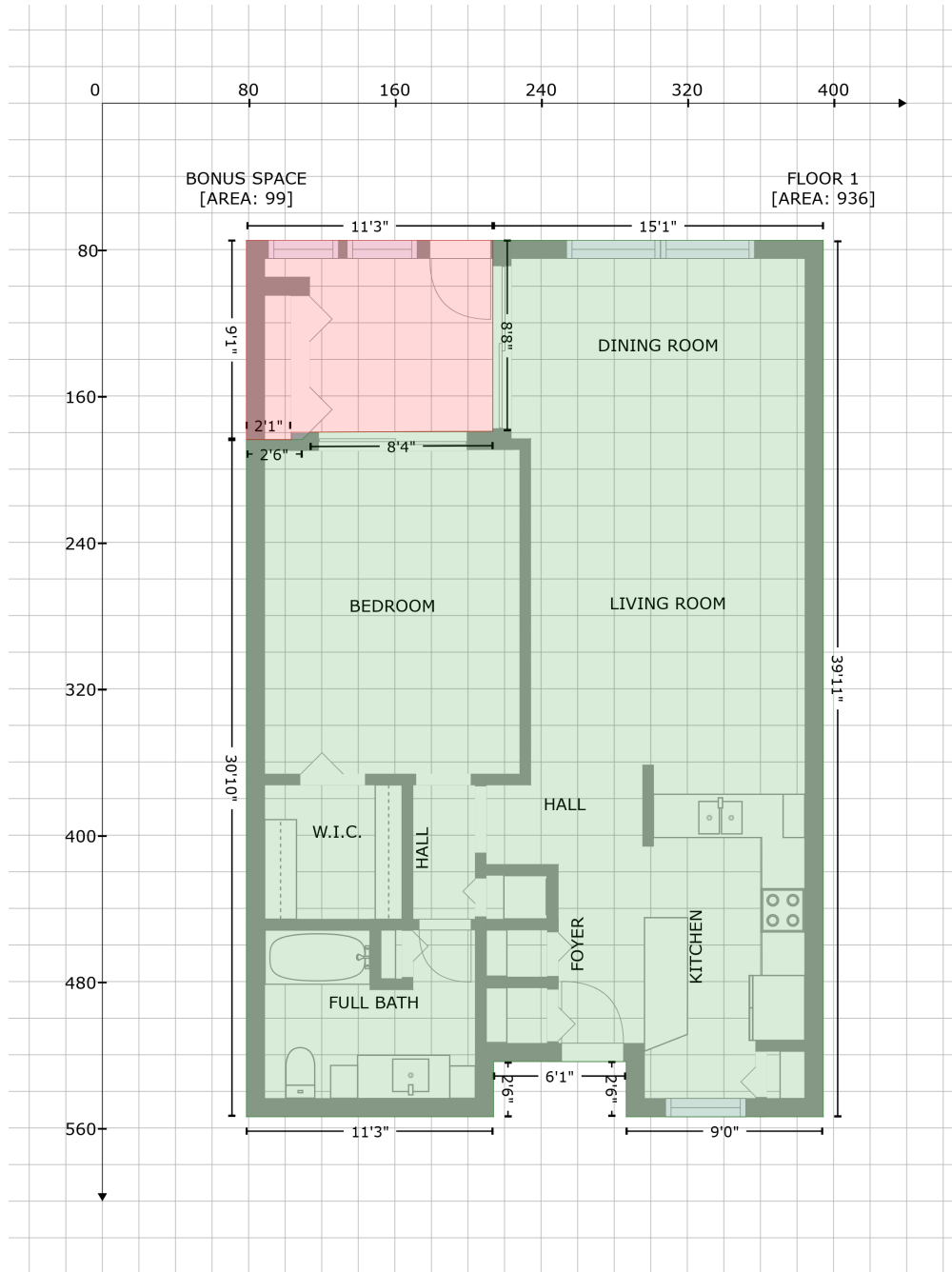


2758 Countryside Blvd, Clearwater, FL, United States, 105

Gross Living Area: 936 sq. ft



Space	Area (sq. ft)	Calculation <small>Coordinate Polygon Area Algorithm using inches</small>
FLOOR 1 (Living area)	936	$-\left((394.4 + 394.4) * (74.9 - 553.9) + (394.4 + 286.6) * (553.9 - 553.9) + (286.6 + 286.6) * (553.9 - 523.7) + (286.6 + 214) * (523.7 - 523.7) + (214 + 214) * (523.7 - 553.9) + (214 + 78.8) * (553.9 - 553.9) + (78.8 + 78.8) * (553.9 - 183.9) + (78.8 + 109.3) * (183.9 - 183.9) + (109.3 + 113.4) * (183.9 - 179.8) + (113.4 + 213.6) * (179.8 - 179.3) + (213.6 + 213.6) * (179.3 - 74.9) + (213.6 + 394.4) * (74.9 - 74.9)\right) * 0.5 + 0.00694$
BONUS SPACE	99	$-\left((213.6 + 213.6) * (74.9 - 179.3) + (213.6 + 113.4) * (179.3 - 179.8) + (113.4 + 103.4) * (179.8 - 179.3)\right) * 0.5 + 0.00694$

2758 Countryside Blvd, Clearwater, FL, United States, 105

Gross Living Area: 936 sq. ft

Space	Area (sq. ft)	Calculation <small>Coordinate Polygon Area Algorithm using inches</small>
(Non-living area)		$\frac{179.8 + (103.4 + 103.4) * (179.8 - 183.9) + (103.4 + 78.8) * (183.9 - 183.9) + (78.8 + 78.8) * (183.9 - 74.9) + (78.8 + 213.6) * (74.9 - 74.9)}{2} * 0.5 * 0.00694$