

Home report

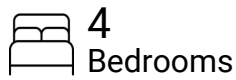
2660 9th Avenue West, North Queen Anne, Seattle,
King County, Washington, United States, 98119



Property summary



1 Garages



4 Bedrooms



3 Bathrooms



1 Half baths



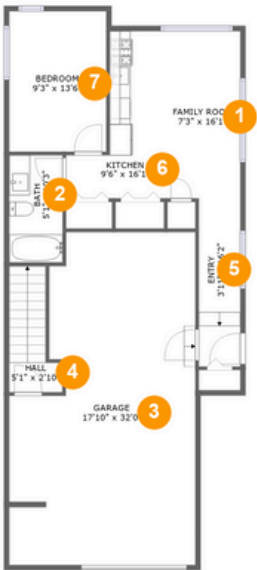
4 Floors



2,903
Gross living
area sqft



3,543
Total sqft



Room dimensions

Floor 1

Total sqft: 1158 Living area: 573

#		Dimensions	sqft	Counted as living area
1	Family Room	7'3" x 16'1"	116 sq. ft	Yes
2	Bath	5'1" x 10'3"	53 sq. ft	Yes
3	Garage	17'10" x 32'0"	506 sq. ft	No
4	Hall	5'1" x 2'10"	47 sq. ft	No
5	Entry	3'11" x 16'2"	64 sq. ft	Yes
6	Kitchen	9'6" x 16'1"	102 sq. ft	Yes
7	Bedroom	9'3" x 13'6"	126 sq. ft	Yes

2660 9th Avenue West, North Queen Anne, Seattle,
King County, Washington, United States, 98119



Room dimensions

Floor 2

Total sqft: 1197 Living area: 1197

#		Dimensions	sqft	Counted as living area
8	Living Room	17'10" x 23'1"	377 sq. ft	Yes
9	Sitting Room	8'5" x 15'9"	133 sq. ft	Yes
10	Hall	10'3" x 2'11"	53 sq. ft	Yes
11	Kitchen	9'11" x 15'9"	156 sq. ft	Yes
12	Hall	3'10" x 6'9"	56 sq. ft	Yes
13	Dining Area	11'9" x 10'7"	125 sq. ft	Yes
14	Foyer	4'0" x 6'6"	26 sq. ft	Yes
15	WC	6'4" x 3'0"	19 sq. ft	Yes
16	Family Room	10'4" x 14'3"	148 sq. ft	Yes

2660 9th Avenue West, North Queen Anne, Seattle,
King County, Washington, United States, 98119



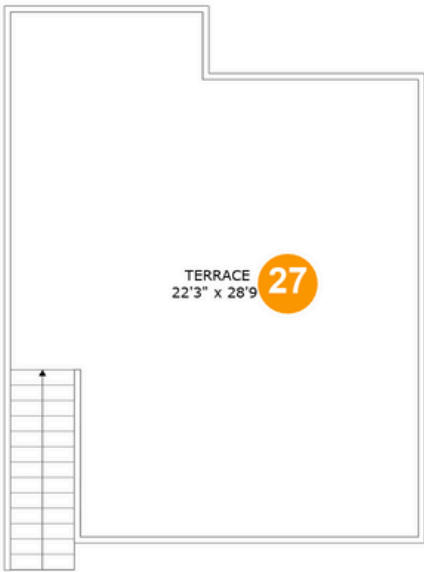
Room dimensions

Floor 3

Total sqft: 1188 Living area: 1133

#		Dimensions	sqft	Counted as living area
17	Primary Bedroom	11'5" x 15'11"	183 sq. ft	Yes
18	Bedroom	11'6" x 15'8"	158 sq. ft	Yes
19	W.I.C.	11'6" x 8'7"	97 sq. ft	Yes
20	Bath	11'6" x 4'11"	56 sq. ft	Yes
21	Primary Bath	10'4" x 11'6"	104 sq. ft	Yes
22	Balcony	18'2" x 3'1"	55 sq. ft	No
23	Laundry	5'3" x 3'0"	16 sq. ft	Yes
24	Hall	10'4" x 22'4"	228 sq. ft	Yes
25	Bedroom	9'8" x 11'11"	115 sq. ft	Yes
26	WC	3'4" x 4'0"	13 sq. ft	Yes

2660 9th Avenue West, North Queen Anne, Seattle,
King County, Washington, United States, 98119



Room dimensions

Floor 4

Total sqft: 0 Living area: 0

#		Dimensions	sqft	Counted as living area
27	Terrace	22'3" x 28'9"	602 sq. ft	No

2660 9th Avenue West, North Queen Anne, Seattle,
King County, Washington, United States, 98119

1 Floor 1 - Family Room



Dimensions: 7'3" x 16'1"
Area: 116 sq. ft
Counted as living area: Yes

Heated: Yes
Finished: Yes
Enclosed: Yes
Contiguous: Yes
Permitted: Yes
Wet space: No
Addition: No
Conversion: No

2 Floor 1 - Bath



Dimensions: 5'1" x 10'3"
Area: 53 sq. ft
Counted as living area: Yes

Heated: Yes
Finished: Yes
Enclosed: Yes
Contiguous: Yes
Permitted: Yes
Wet space: Yes
Addition: No
Conversion: No

2660 9th Avenue West, North Queen Anne, Seattle,
King County, Washington, United States, 98119

3 Floor 1 - Garage



Dimensions: 17'10" x 32'0"
Area: 506 sq. ft
Counted as living area: No

Heated: No
Finished: No
Enclosed: Yes
Contiguous: Yes
Permitted: Yes
Wet space: No
Addition: No
Conversion: No

4 Floor 1 - Hall



Dimensions: 5'1" x 2'10"
Area: 47 sq. ft
Counted as living area: No

Heated: Yes
Finished: Yes
Enclosed: Yes
Contiguous: No
Permitted: Yes
Wet space: No
Addition: No
Conversion: No

5 Floor 1 - Entry



Dimensions: 3'11" x 16'2"
Area: 64 sq. ft
Counted as living area: Yes

Heated: Yes
Finished: Yes
Enclosed: Yes
Contiguous: Yes
Permitted: Yes
Wet space: No
Addition: No
Conversion: No

2660 9th Avenue West, North Queen Anne, Seattle,
King County, Washington, United States, 98119

6 Floor 1 - Kitchen



Dimensions: 9'6" x 16'1"
Area: 102 sq. ft
Counted as living area: Yes

Heated: Yes
Finished: Yes
Enclosed: Yes
Contiguous: Yes
Permitted: Yes
Wet space: No
Addition: No
Conversion: No

7 Floor 1 - Bedroom



Dimensions: 9'3" x 13'6"
Area: 126 sq. ft
Counted as living area: Yes

Heated: Yes
Finished: Yes
Enclosed: Yes
Contiguous: Yes
Permitted: Yes
Wet space: No
Addition: No
Conversion: No

8 Floor 2 - Living Room



Dimensions: 17'10" x 23'1"
Area: 377 sq. ft
Counted as living area: Yes

Heated: Yes
Finished: Yes
Enclosed: Yes
Contiguous: Yes
Permitted: Yes
Wet space: No
Addition: No
Conversion: No

2660 9th Avenue West, North Queen Anne, Seattle,
King County, Washington, United States, 98119

9 Floor 2 - Sitting Room



Dimensions: 8'5" x 15'9"
Area: 133 sq. ft
Counted as living area: Yes

Heated: Yes
Finished: Yes
Enclosed: Yes
Contiguous: Yes
Permitted: Yes
Wet space: No
Addition: No
Conversion: No

10 Floor 2 - Hall



Dimensions: 10'3" x 2'11"
Area: 53 sq. ft
Counted as living area: Yes

Heated: Yes
Finished: Yes
Enclosed: Yes
Contiguous: Yes
Permitted: Yes
Wet space: No
Addition: No
Conversion: No

11 Floor 2 - Kitchen



Dimensions: 9'11" x 15'9"
Area: 156 sq. ft
Counted as living area: Yes

Heated: Yes
Finished: Yes
Enclosed: Yes
Contiguous: Yes
Permitted: Yes
Wet space: No
Addition: No
Conversion: No

2660 9th Avenue West, North Queen Anne, Seattle,
King County, Washington, United States, 98119

12 Floor 2 - Hall



Dimensions: 3'10" x 6'9"
Area: 56 sq. ft
Counted as living area: Yes

Heated: Yes
Finished: Yes
Enclosed: Yes
Contiguous: Yes
Permitted: Yes
Wet space: No
Addition: No
Conversion: No

13 Floor 2 - Dining Area



Dimensions: 11'9" x 10'7"
Area: 125 sq. ft
Counted as living area: Yes

Heated: Yes
Finished: Yes
Enclosed: Yes
Contiguous: Yes
Permitted: Yes
Wet space: No
Addition: No
Conversion: No

14 Floor 2 - Foyer



Dimensions: 4'0" x 6'6"
Area: 26 sq. ft
Counted as living area: Yes

Heated: Yes
Finished: Yes
Enclosed: Yes
Contiguous: Yes
Permitted: Yes
Wet space: No
Addition: No
Conversion: No

2660 9th Avenue West, North Queen Anne, Seattle,
King County, Washington, United States, 98119

15 Floor 2 - WC



Dimensions: 6'4" x 3'0"
Area: 19 sq. ft
Counted as living area: Yes

Heated: Yes
Finished: Yes
Enclosed: Yes
Contiguous: Yes
Permitted: Yes
Wet space: Yes
Addition: No
Conversion: No

16 Floor 2 - Family Room



Dimensions: 10'4" x 14'3"
Area: 148 sq. ft
Counted as living area: Yes

Heated: Yes
Finished: Yes
Enclosed: Yes
Contiguous: Yes
Permitted: Yes
Wet space: No
Addition: No
Conversion: No

17 Floor 3 - Primary Bedroom



Dimensions: 11'5" x 15'11"
Area: 183 sq. ft
Counted as living area: Yes

Heated: Yes
Finished: Yes
Enclosed: Yes
Contiguous: Yes
Permitted: Yes
Wet space: No
Addition: No
Conversion: No

2660 9th Avenue West, North Queen Anne, Seattle,
King County, Washington, United States, 98119

18 Floor 3 - Bedroom



Dimensions: 11'6" x 15'8"
Area: 158 sq. ft
Counted as living area: Yes

Heated: Yes
Finished: Yes
Enclosed: Yes
Contiguous: Yes
Permitted: Yes
Wet space: No
Addition: No
Conversion: No

19 Floor 3 - W.I.C.



Dimensions: 11'6" x 8'7"
Area: 97 sq. ft
Counted as living area: Yes

Heated: Yes
Finished: Yes
Enclosed: Yes
Contiguous: Yes
Permitted: Yes
Wet space: No
Addition: No
Conversion: No

20 Floor 3 - Bath



Dimensions: 11'6" x 4'11"
Area: 56 sq. ft
Counted as living area: Yes

Heated: Yes
Finished: Yes
Enclosed: Yes
Contiguous: Yes
Permitted: Yes
Wet space: Yes
Addition: No
Conversion: No

2660 9th Avenue West, North Queen Anne, Seattle,
King County, Washington, United States, 98119

21 Floor 3 - Primary Bath



Dimensions: 10'4" x 11'6"
Area: 104 sq. ft
Counted as living area: Yes

Heated: Yes
Finished: Yes
Enclosed: Yes
Contiguous: Yes
Permitted: Yes
Wet space: Yes
Addition: No
Conversion: No

22 Floor 3 - Balcony



Dimensions: 18'2" x 3'1"
Area: 55 sq. ft
Counted as living area: No

Heated: No
Finished: Yes
Enclosed: No
Contiguous: Yes
Permitted: Yes
Wet space: No
Addition: No
Conversion: No

23 Floor 3 - Laundry



Dimensions: 5'3" x 3'0"
Area: 16 sq. ft
Counted as living area: Yes

Heated: Yes
Finished: Yes
Enclosed: Yes
Contiguous: Yes
Permitted: Yes
Wet space: No
Addition: No
Conversion: No

2660 9th Avenue West, North Queen Anne, Seattle,
King County, Washington, United States, 98119

24 Floor 3 - Hall



Dimensions: 10'4" x 22'4"
Area: 228 sq. ft
Counted as living area: Yes

Heated: Yes
Finished: Yes
Enclosed: Yes
Contiguous: Yes
Permitted: Yes
Wet space: No
Addition: No
Conversion: No

25 Floor 3 - Bedroom



Dimensions: 9'8" x 11'11"
Area: 115 sq. ft
Counted as living area: Yes

Heated: Yes
Finished: Yes
Enclosed: Yes
Contiguous: Yes
Permitted: Yes
Wet space: No
Addition: No
Conversion: No

26 Floor 3 - WC

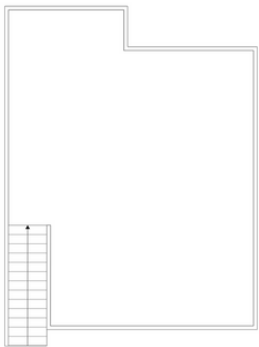


Dimensions: 3'4" x 4'0"
Area: 13 sq. ft
Counted as living area: Yes

Heated: Yes
Finished: Yes
Enclosed: Yes
Contiguous: Yes
Permitted: Yes
Wet space: Yes
Addition: No
Conversion: No

2660 9th Avenue West, North Queen Anne, Seattle,
King County, Washington, United States, 98119

27 Floor 4 - Terrace



Dimensions: 22'3" x 28'9"
Area: 602 sq. ft
Counted as living area: No

Heated: No
Finished: No
Enclosed: No
Contiguous: Yes
Permitted: No
Wet space: No
Addition: No
Conversion: No