

Home report

3812 Chesterton Street Southwest, Greater Deyerle, Roanoke,
Roanoke city, Virginia, United States, 24018



Total Area: 2539 sq. ft

Floor 1: 616 sq. ft, Floor 2: 1923 sq. ft

Excluded: Room 84 sq. ft, Garage 875 sq. ft, Outdoor Patio 136 sq. ft, Utility 337 sq. ft, Undefined 9 sq. ft, Fireplace 16 sq. ft, Outdoor Porch 124 sq. ft, Outdoor Deck 71 sq. ft

Property summary

 **2** Floors

 **3** Bedrooms

 **2** Bathrooms

Home report

**3812 Chesterton Street Southwest, Greater Deyerle, Roanoke,
Roanoke city, Virginia, United States, 24018**



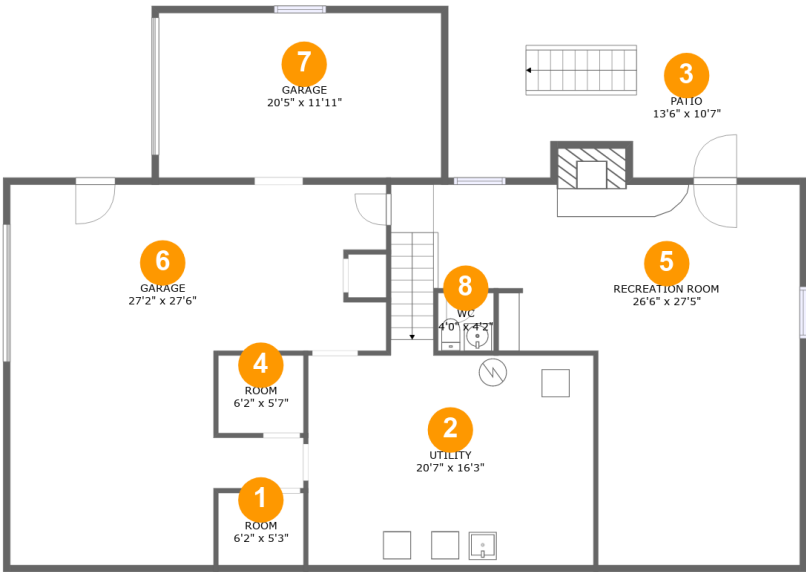
1
Half baths



2
Garages

Home report

3812 Chesterton Street Southwest, Greater Deyerle, Roanoke, Roanoke city, Virginia, United States, 24018



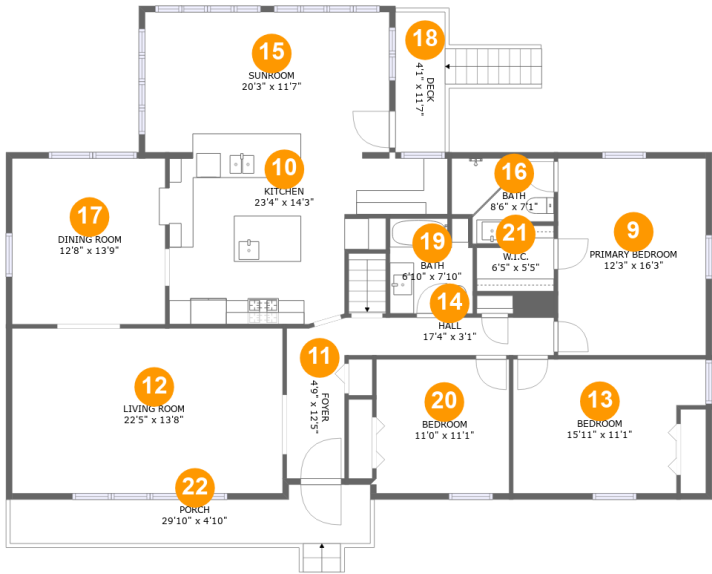
Room dimensions

Floor 1 Total:616sqft Excluded: 1457sqft

#		Max Dimensions	sqft	Included
1	Room	6'2" x 5'3"	32 sq. ft	No
2	Utility	20'7" x 16'3"	326 sq. ft	No
3	Patio	13'6" x 10'7"	136 sq. ft	No
4	Room	6'2" x 5'7"	35 sq. ft	No
5	Recreation Room	26'6" x 27'5"	557 sq. ft	Yes
6	Garage	27'2" x 27'6"	566 sq. ft	No
7	Garage	20'5" x 11'11"	243 sq. ft	No
8	WC	4'0" x 4'2"	17 sq. ft	Yes

Home report

3812 Chesterton Street Southwest, Greater Deyerle, Roanoke, Roanoke city, Virginia, United States, 24018



Room dimensions

Floor 2 Total:1923sqft Excluded: 195sqft

#		Max Dimensions	sqft	Included
9	Primary Bedroom	12'3" x 16'3"	199 sq. ft	Yes
10	Kitchen	23'4" x 14'3"	254 sq. ft	Yes
11	Foyer	4'9" x 12'5"	61 sq. ft	Yes
12	Living Room	22'5" x 13'8"	305 sq. ft	Yes
13	Bedroom	15'11" x 11'1"	159 sq. ft	Yes
14	Hall	17'4" x 3'1"	54 sq. ft	Yes
15	Sunroom	20'3" x 11'7"	234 sq. ft	Yes
16	Bath	8'6" x 7'1"	49 sq. ft	Yes
17	Dining Room	12'8" x 13'9"	174 sq. ft	Yes
18	Deck	4'1" x 11'7"	71 sq. ft	No
19	Bath	6'10" x 7'10"	52 sq. ft	Yes

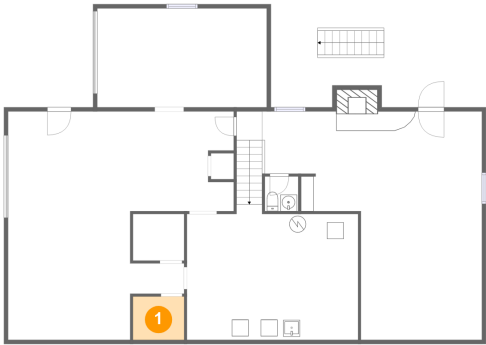
Home report

3812 Chesterton Street Southwest, Greater Deyerle, Roanoke,
Roanoke city, Virginia, United States, 24018

#		Max Dimensions	sqft	Included
20	Bedroom	11'0" x 11'1"	122 sq. ft	Yes
21	W.I.C.	6'5" x 5'5"	29 sq. ft	Yes
22	Porch	29'10" x 4'10"	124 sq. ft	No

3812 Chesterton Street Southwest, Greater Deyerle, Roanoke,
Roanoke city, Virginia, United States, 24018

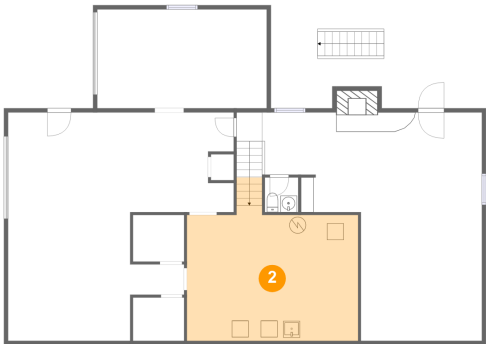
1 Floor 1 - Room



Max Dimensions: 6'2" x 5'3"
Calculated Area: 32 sq. ft
Included: No

Heated: Yes
Finished: No
Enclosed: Yes
Contiguous: Yes
Permitted: Yes
Wet space: No
Addition: No
Conversion: No

2 Floor 1 - Utility



Max Dimensions: 20'7" x 16'3"
Calculated Area: 326 sq. ft
Included: No

Heated: Yes
Finished: No
Enclosed: Yes
Contiguous: Yes
Permitted: Yes
Wet space: No
Addition: No
Conversion: No

3812 Chesterton Street Southwest, Greater Deyerle, Roanoke,
Roanoke city, Virginia, United States, 24018

3 Floor 1 - Patio



Max Dimensions: 13'6" x 10'7"
Calculated Area: 136 sq. ft
Included: No

Heated: No
Finished: Yes
Enclosed: No
Contiguous: Yes
Permitted: Yes
Wet space: No
Addition: No
Conversion: No

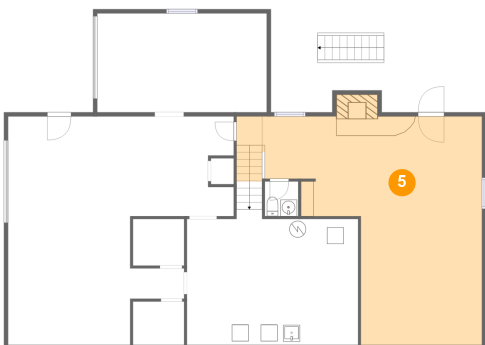
4 Floor 1 - Room



Max Dimensions: 6'2" x 5'7"
Calculated Area: 35 sq. ft
Included: No

Heated: Yes
Finished: No
Enclosed: Yes
Contiguous: Yes
Permitted: Yes
Wet space: No
Addition: No
Conversion: No

5 Floor 1 - Recreation Room

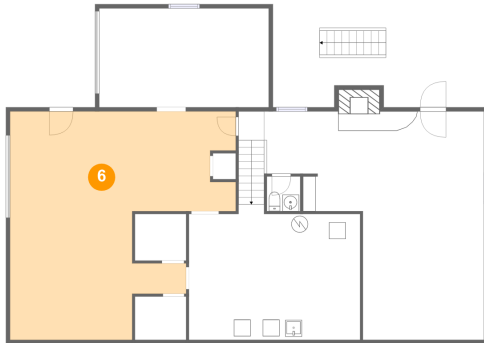


Max Dimensions: 26'6" x 27'5"
Calculated Area: 557 sq. ft
Included: Yes

Heated: Yes
Finished: Yes
Enclosed: Yes
Contiguous: Yes
Permitted: Yes
Wet space: No
Addition: No
Conversion: No

3812 Chesterton Street Southwest, Greater Deyerle, Roanoke,
Roanoke city, Virginia, United States, 24018

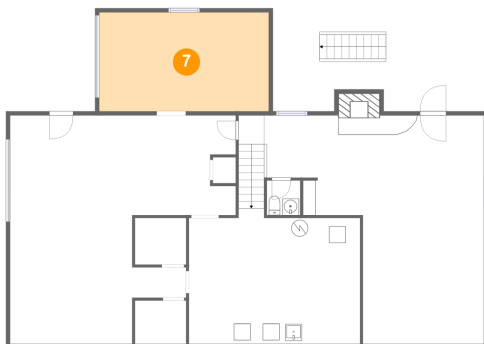
6 Floor 1 - Garage



Max Dimensions: 27'2" x 27'6"
Calculated Area: 566 sq. ft
Included: No

Heated: No
Finished: No
Enclosed: Yes
Contiguous: Yes
Permitted: Yes
Wet space: No
Addition: No
Conversion: No

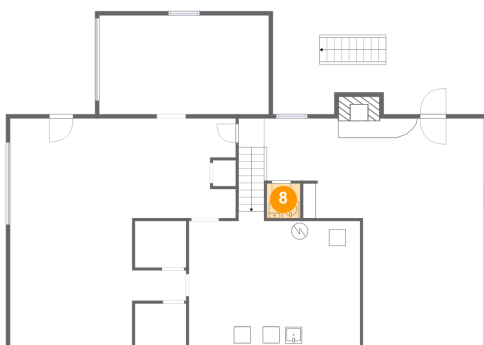
7 Floor 1 - Garage



Max Dimensions: 20'5" x 11'11"
Calculated Area: 243 sq. ft
Included: No

Heated: No
Finished: No
Enclosed: Yes
Contiguous: Yes
Permitted: Yes
Wet space: No
Addition: No
Conversion: No

8 Floor 1 - WC



Max Dimensions: 4'0" x 4'2"
Calculated Area: 17 sq. ft
Included: Yes

Heated: Yes
Finished: Yes
Enclosed: Yes
Contiguous: Yes
Permitted: Yes
Wet space: Yes
Addition: No
Conversion: No

3812 Chesterton Street Southwest, Greater Deyerle, Roanoke,
Roanoke city, Virginia, United States, 24018

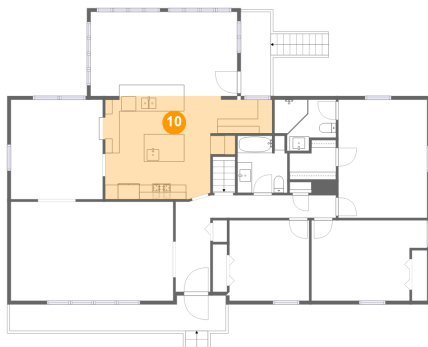
9 Floor 2 - Primary Bedroom



Max Dimensions: 12'3" x 16'3"
Calculated Area: 199 sq. ft
Included: Yes

Heated: Yes
Finished: Yes
Enclosed: Yes
Contiguous: Yes
Permitted: Yes
Wet space: No
Addition: No
Conversion: No

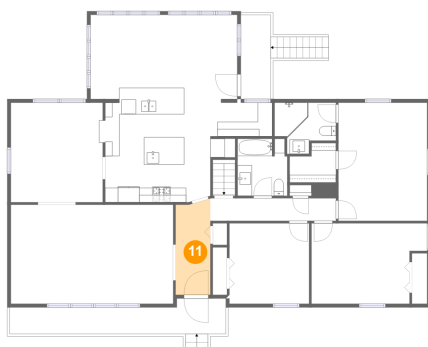
10 Floor 2 - Kitchen



Max Dimensions: 23'4" x 14'3"
Calculated Area: 254 sq. ft
Included: Yes

Heated: Yes
Finished: Yes
Enclosed: Yes
Contiguous: Yes
Permitted: Yes
Wet space: No
Addition: No
Conversion: No

11 Floor 2 - Foyer



Max Dimensions: 4'9" x 12'5"
Calculated Area: 61 sq. ft
Included: Yes

Heated: Yes
Finished: Yes
Enclosed: Yes
Contiguous: Yes
Permitted: Yes
Wet space: No
Addition: No
Conversion: No

3812 Chesterton Street Southwest, Greater Deyerle, Roanoke,
Roanoke city, Virginia, United States, 24018

12 Floor 2 - Living Room



Max Dimensions: 22'5" x 13'8"
Calculated Area: 305 sq. ft
Included: Yes

Heated: Yes
Finished: Yes
Enclosed: Yes
Contiguous: Yes
Permitted: Yes
Wet space: No
Addition: No
Conversion: No

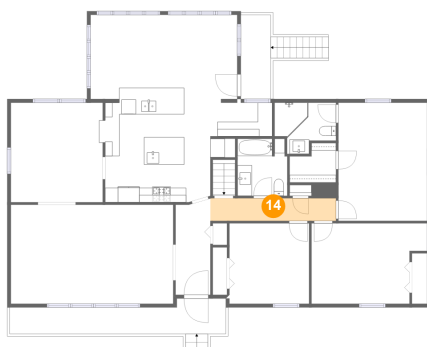
13 Floor 2 - Bedroom



Max Dimensions: 15'11" x 11'1"
Calculated Area: 159 sq. ft
Included: Yes

Heated: Yes
Finished: Yes
Enclosed: Yes
Contiguous: Yes
Permitted: Yes
Wet space: No
Addition: No
Conversion: No

14 Floor 2 - Hall

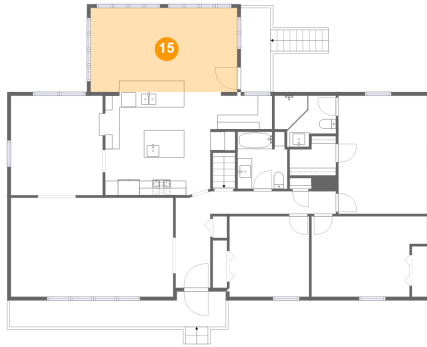


Max Dimensions: 17'4" x 3'1"
Calculated Area: 54 sq. ft
Included: Yes

Heated: Yes
Finished: Yes
Enclosed: Yes
Contiguous: Yes
Permitted: Yes
Wet space: No
Addition: No
Conversion: No

3812 Chesterton Street Southwest, Greater Deyerle, Roanoke,
Roanoke city, Virginia, United States, 24018

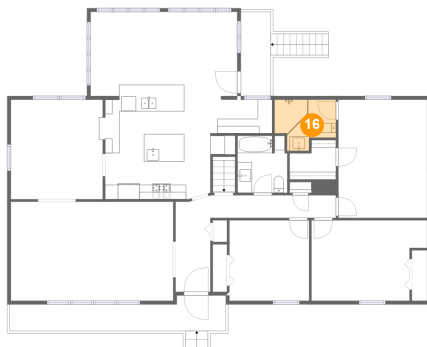
15 Floor 2 - Sunroom



Max Dimensions: 20'3" x 11'7"
Calculated Area: 234 sq. ft
Included: Yes

Heated: Yes
Finished: Yes
Enclosed: Yes
Contiguous: Yes
Permitted: Yes
Wet space: No
Addition: No
Conversion: No

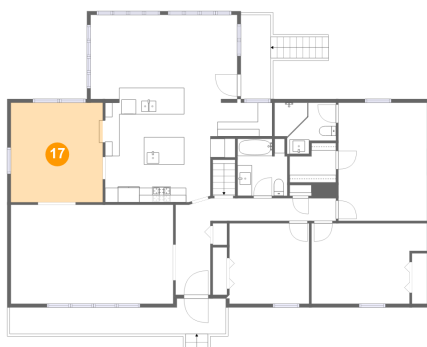
16 Floor 2 - Bath



Max Dimensions: 8'6" x 7'1"
Calculated Area: 49 sq. ft
Included: Yes

Heated: Yes
Finished: Yes
Enclosed: Yes
Contiguous: Yes
Permitted: Yes
Wet space: Yes
Addition: No
Conversion: No

17 Floor 2 - Dining Room



Max Dimensions: 12'8" x 13'9"
Calculated Area: 174 sq. ft
Included: Yes

Heated: Yes
Finished: Yes
Enclosed: Yes
Contiguous: Yes
Permitted: Yes
Wet space: No
Addition: No
Conversion: No

3812 Chesterton Street Southwest, Greater Deyerle, Roanoke,
Roanoke city, Virginia, United States, 24018

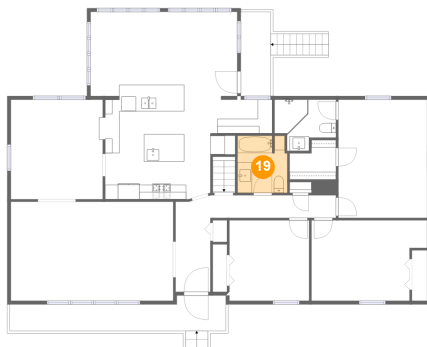
18 Floor 2 - Deck



Max Dimensions: 4'1" x 11'7"
Calculated Area: 71 sq. ft
Included: No

Heated: No
Finished: Yes
Enclosed: No
Contiguous: Yes
Permitted: Yes
Wet space: No
Addition: No
Conversion: No

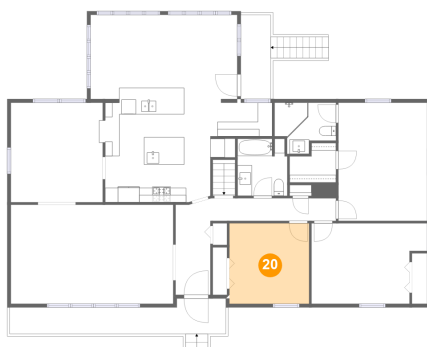
19 Floor 2 - Bath



Max Dimensions: 6'10" x 7'10"
Calculated Area: 52 sq. ft
Included: Yes

Heated: Yes
Finished: Yes
Enclosed: Yes
Contiguous: Yes
Permitted: Yes
Wet space: Yes
Addition: No
Conversion: No

20 Floor 2 - Bedroom



Max Dimensions: 11'0" x 11'1"
Calculated Area: 122 sq. ft
Included: Yes

Heated: Yes
Finished: Yes
Enclosed: Yes
Contiguous: Yes
Permitted: Yes
Wet space: No
Addition: No
Conversion: No

3812 Chesterton Street Southwest, Greater Deyerle, Roanoke,
Roanoke city, Virginia, United States, 24018

21 Floor 2 - W.I.C.



Max Dimensions: 6'5" x 5'5"
Calculated Area: 29 sq. ft
Included: Yes

Heated: Yes
Finished: Yes
Enclosed: Yes
Contiguous: Yes
Permitted: Yes
Wet space: No
Addition: No
Conversion: No

22 Floor 2 - Porch



Max Dimensions: 29'10" x 4'10"
Calculated Area: 124 sq. ft
Included: No

Heated: No
Finished: Yes
Enclosed: No
Contiguous: Yes
Permitted: Yes
Wet space: No
Addition: No
Conversion: No