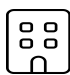


Home Data Report


16 Mott Street South, Alburgh, Grand Isle County, Vermont, United States, 05440



Property Summary


 **2** floors

 **3** bedrooms

 **2** bathrooms

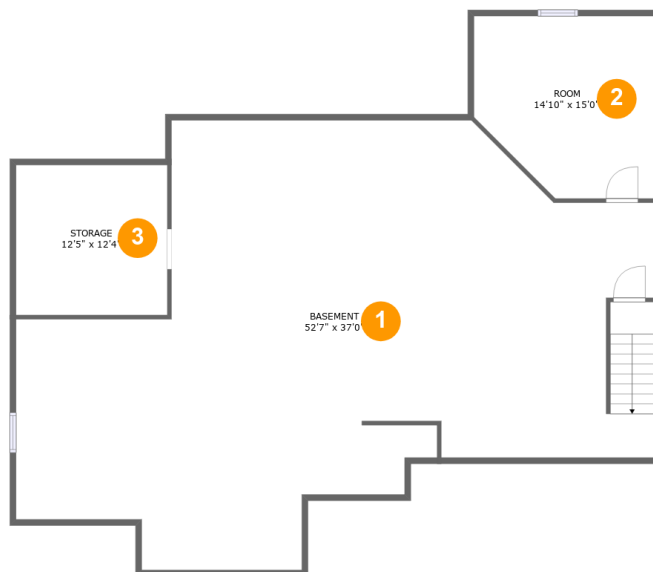
 **4,533** total sqft

 **1** garages

 **1,889** Gross Living Area sqft

Home Data Report

**16 Mott Street South, Alburgh, Grand Isle
County, Vermont, United States, 05440**



Room Dimensions

Floor 1

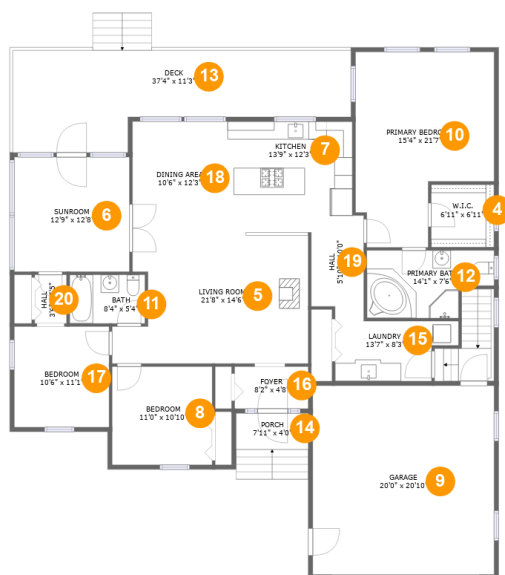
Total sqft: 1840

Living area: 0

#	Room name	Dimensions	Area (sqft)	Counted as Living Area
1	Basement	52'7" x 37'0"	1364 sq. ft	No
2	Room	14'10" x 15'0"	200 sq. ft	No
3	Storage	12'5" x 12'4"	154 sq. ft	No

Home Data Report

16 Mott Street South, Alburgh, Grand Isle County, Vermont, United States, 05440



Room Dimensions

Floor 2

Total sqft: 2693

Living area: 1889

#	Room name	Dimensions	Area (sqft)	Counted as Living Area
4	W.i.c.	6'11" x 6'11"	48 sq. ft	Yes
5	Living Room	21'8" x 14'6"	280 sq. ft	Yes
6	Sunroom	12'9" x 12'8"	161 sq. ft	Yes
7	Kitchen	13'9" x 12'3"	160 sq. ft	Yes
8	Bedroom	11'0" x 10'10"	120 sq. ft	Yes
9	Garage	20'0" x 20'10"	418 sq. ft	No
10	Primary Bedroom	15'4" x 21'7"	273 sq. ft	Yes
11	Bath	8'4" x 5'4"	45 sq. ft	Yes
12	Primary Bath	14'1" x 7'6"	91 sq. ft	Yes
13	Deck	37'4" x 11'3"	324 sq. ft	No
14	Porch	7'11" x 4'0"	32 sq. ft	No

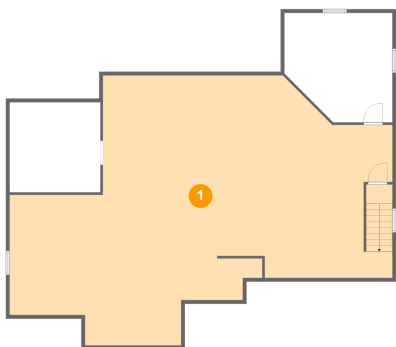
Home Data Report

**16 Mott Street South, Alburgh, Grand Isle
County, Vermont, United States, 05440**

#	Room name	Dimensions	Area (sqft)	Counted as Living Area
15	Laundry	13'7" x 8'3"	84 sq. ft	Yes
16	Foyer	8'2" x 4'8"	38 sq. ft	Yes
17	Bedroom	10'6" x 11'1"	116 sq. ft	Yes
18	Dining Area	10'6" x 12'3"	129 sq. ft	Yes
19	Hall	5'10" x 10'0"	58 sq. ft	Yes
20	Hall	3'6" x 5'5"	19 sq. ft	Yes

**16 Mott Street South, Alburgh, Grand Isle
County, Vermont, United States, 05440**

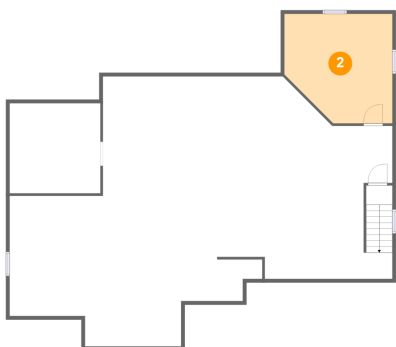
1 Floor 1 - Basement



Dimensions: 52'7" x 37'0"
Area: 1364 sq. ft
Counted as Living Area: No

Heated: No
Finished: No
Enclosed: Yes
Contiguous: Yes
Permitted: Yes
Wet Space: No
Addition: No
Conversion: No

2 Floor 1 - Room

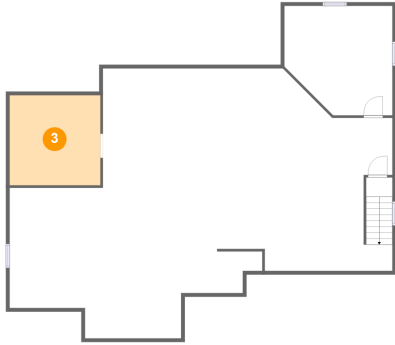


Dimensions: 14'10" x 15'0"
Area: 200 sq. ft
Counted as Living Area: No

Heated: Yes
Finished: Yes
Enclosed: Yes
Contiguous: No
Permitted: Yes
Wet Space: No
Addition: No
Conversion: No

**16 Mott Street South, Alburgh, Grand Isle
County, Vermont, United States, 05440**

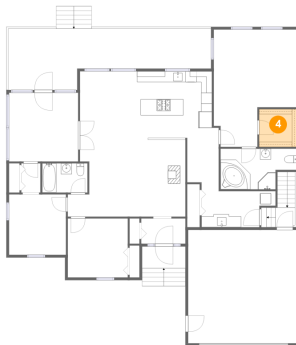
3 Floor 1 - Storage



Dimensions: 12'5" x 12'4"
Area: 154 sq. ft
Counted as Living Area: No

Heated: No
Finished: No
Enclosed: No
Contiguous: Yes
Permitted: Yes
Wet Space: No
Addition: No
Conversion: No

4 Floor 2 - W.i.c.



Dimensions: 6'11" x 6'11"
Area: 48 sq. ft
Counted as Living Area:
Yes

Heated: Yes
Finished: Yes
Enclosed: Yes
Contiguous:
Yes
Permitted: Yes
Wet Space: No
Addition: No
Conversion: No

5 Floor 2 - Living Room



Dimensions: 21'8" x 14'6"
Area: 280 sq. ft
Counted as Living Area:
Yes

Heated: Yes
Finished: Yes
Enclosed: Yes
Contiguous:
Yes
Permitted: Yes
Wet Space: No
Addition: No
Conversion: No

**16 Mott Street South, Alburgh, Grand Isle
County, Vermont, United States, 05440**

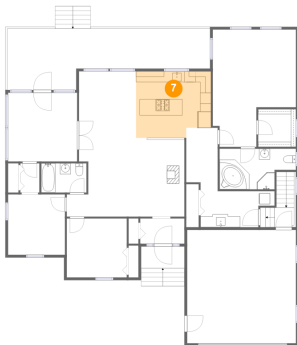
6 Floor 2 - Sunroom



Dimensions: 12'9" x 12'8"
Area: 161 sq. ft
Counted as Living Area:
Yes

Heated: Yes
Finished: Yes
Enclosed: Yes
Contiguous:
Yes
Permitted: Yes
Wet Space: No
Addition: No
Conversion: No

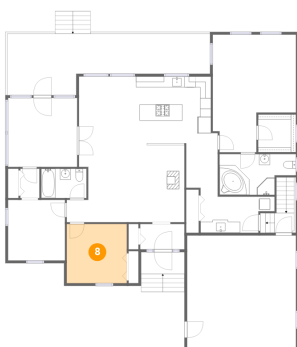
7 Floor 2 - Kitchen



Dimensions: 13'9" x 12'3"
Area: 160 sq. ft
Counted as Living Area:
Yes

Heated: Yes
Finished: Yes
Enclosed: Yes
Contiguous:
Yes
Permitted: Yes
Wet Space: No
Addition: No
Conversion: No

8 Floor 2 - Bedroom

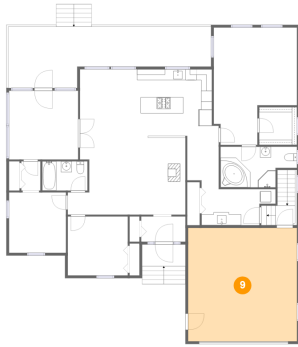


Dimensions: 11'0" x 10'10"
Area: 120 sq. ft
Counted as Living Area:
Yes

Heated: Yes
Finished: Yes
Enclosed: Yes
Contiguous:
Yes
Permitted: Yes
Wet Space: No
Addition: No
Conversion: No

**16 Mott Street South, Alburgh, Grand Isle
County, Vermont, United States, 05440**

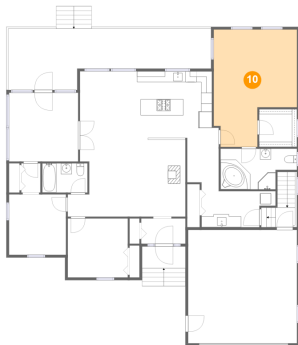
9 Floor 2 - Garage



Dimensions: 20'0" x 20'10"
Area: 418 sq. ft
Counted as Living Area: No

Heated: No
Finished: No
Enclosed: Yes
Contiguous: Yes
Permitted: Yes
Wet Space: No
Addition: No
Conversion: No

10 Floor 2 - Primary Bedroom



Dimensions: 15'4" x 21'7"
Area: 273 sq. ft
Counted as Living Area:
Yes

Heated: Yes
Finished: Yes
Enclosed: Yes
Contiguous:
Yes
Permitted: Yes
Wet Space: No
Addition: No
Conversion: No

11 Floor 2 - Bath



Dimensions: 8'4" x 5'4"
Area: 45 sq. ft
Counted as Living Area:
Yes

Heated: Yes
Finished: Yes
Enclosed: Yes
Contiguous:
Yes
Permitted: Yes
Wet Space: Yes
Addition: No
Conversion: No

**16 Mott Street South, Alburgh, Grand Isle
County, Vermont, United States, 05440**

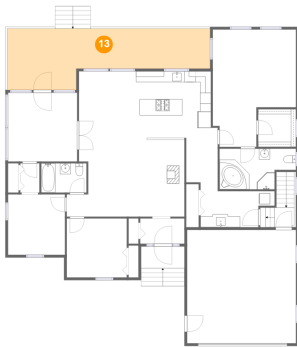
12 Floor 2 - Primary Bath



Dimensions: 14'1" x 7'6"
Area: 91 sq. ft
Counted as Living Area:
Yes

Heated: Yes
Finished: Yes
Enclosed: Yes
Contiguous:
Yes
Permitted: Yes
Wet Space: Yes
Addition: No
Conversion: No

13 Floor 2 - Deck



Dimensions: 37'4" x 11'3"
Area: 324 sq. ft
Counted as Living Area: No

Heated: No
Finished: Yes
Enclosed: No
Contiguous: Yes
Permitted: Yes
Wet Space: No
Addition: No
Conversion: No

14 Floor 2 - Porch

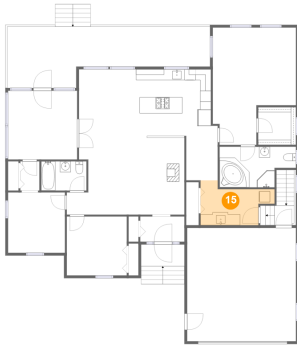


Dimensions: 7'11" x 4'0"
Area: 32 sq. ft
Counted as Living Area: No

Heated: No
Finished: Yes
Enclosed: No
Contiguous: Yes
Permitted: Yes
Wet Space: No
Addition: No
Conversion: No

**16 Mott Street South, Alburgh, Grand Isle
County, Vermont, United States, 05440**

15 Floor 2 - Laundry



Dimensions: 13'7" x 8'3"
Area: 84 sq. ft
Counted as Living Area:
Yes

Heated: Yes
Finished: Yes
Enclosed: Yes
Contiguous:
Yes
Permitted: Yes
Wet Space: No
Addition: No
Conversion: No

16 Floor 2 - Foyer



Dimensions: 8'2" x 4'8"
Area: 38 sq. ft
Counted as Living Area:
Yes

Heated: Yes
Finished: Yes
Enclosed: Yes
Contiguous:
Yes
Permitted: Yes
Wet Space: No
Addition: No
Conversion: No

17 Floor 2 - Bedroom

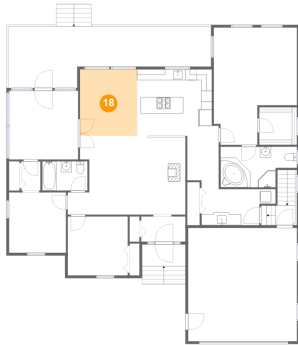


Dimensions: 10'6" x 11'1"
Area: 116 sq. ft
Counted as Living Area:
Yes

Heated: Yes
Finished: Yes
Enclosed: Yes
Contiguous:
Yes
Permitted: Yes
Wet Space: No
Addition: No
Conversion: No

**16 Mott Street South, Alburgh, Grand Isle
County, Vermont, United States, 05440**

18 Floor 2 - Dining Area



Dimensions: 10'6" x 12'3"
Area: 129 sq. ft
Counted as Living Area:
Yes

Heated: Yes
Finished: Yes
Enclosed: Yes
Contiguous:
Yes
Permitted: Yes
Wet Space: No
Addition: No
Conversion: No

19 Floor 2 - Hall



Dimensions: 5'10" x 10'0"
Area: 58 sq. ft
Counted as Living Area:
Yes

Heated: Yes
Finished: Yes
Enclosed: Yes
Contiguous:
Yes
Permitted: Yes
Wet Space: No
Addition: No
Conversion: No

20 Floor 2 - Hall



Dimensions: 3'6" x 5'5"
Area: 19 sq. ft
Counted as Living Area:
Yes

Heated: Yes
Finished: Yes
Enclosed: Yes
Contiguous:
Yes
Permitted: Yes
Wet Space: No
Addition: No
Conversion: No