

Home report

1218 Monroe Ave,Cheyenne,WY,US



Total Area: 1978 sq. ft

Below Ground: 843 sq. ft, Floor 2: 1135 sq. ft

Excluded: Utility 293 sq. ft, Fireplace 11 sq. ft, Walls: 143 sq. ft

Property summary

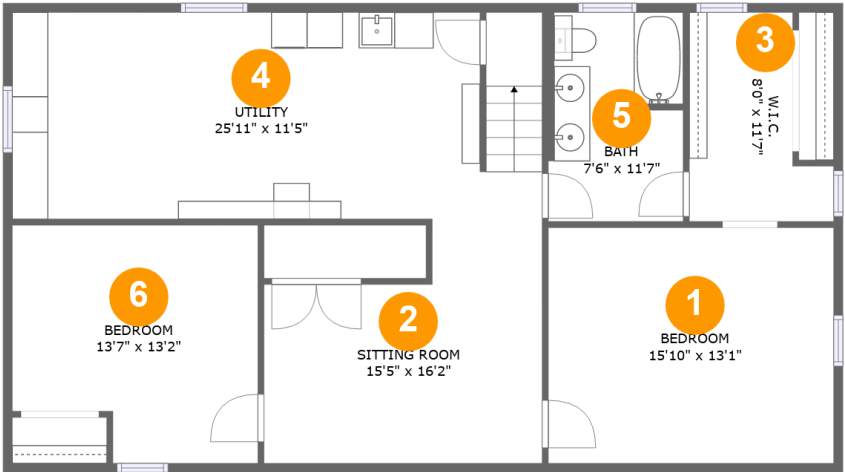
 **2** Floors

 **5** Bedrooms

 **2** Bathrooms

Home report

1218 Monroe Ave,Cheyenne,WY,US



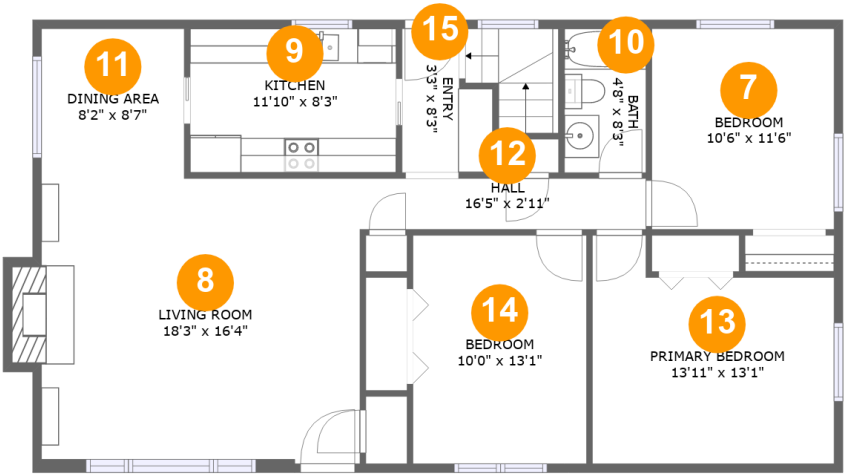
Room dimensions

Floor 1 Below ground Total:843sqft Excluded: 293sqft

#		Max Dimensions	sqft	Included
1	Bedroom	15'10" x 13'1"	206 sq. ft	Yes
2	Sitting Room	15'5" x 16'2"	215 sq. ft	Yes
3	W.I.C.	8'0" x 11'7"	73 sq. ft	Yes
4	Utility	25'11" x 11'5"	293 sq. ft	No
5	Bath	7'6" x 11'7"	86 sq. ft	Yes
6	Bedroom	13'7" x 13'2"	163 sq. ft	Yes

Home report

1218 Monroe Ave,Cheyenne,WY,US

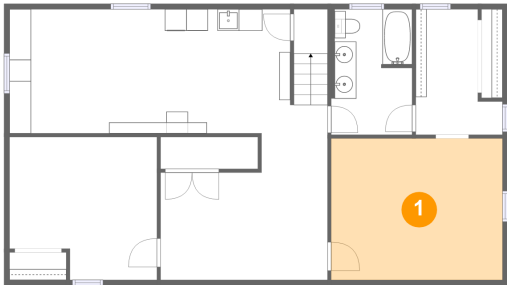


Room dimensions

Floor 2 Total:1135sqft Excluded: 11sqft

#		Max Dimensions	sqft	Included
7	Bedroom	10'6" x 11'6"	121 sq. ft	Yes
8	Living Room	18'3" x 16'4"	305 sq. ft	Yes
9	Kitchen	11'10" x 8'3"	98 sq. ft	Yes
10	Bath	4'8" x 8'3"	39 sq. ft	Yes
11	Dining Area	8'2" x 8'7"	70 sq. ft	Yes
12	Hall	16'5" x 2'11"	48 sq. ft	Yes
13	Primary Bedroom	13'11" x 13'1"	156 sq. ft	Yes
14	Bedroom	10'0" x 13'1"	131 sq. ft	Yes
15	Entry	3'3" x 8'3"	36 sq. ft	Yes

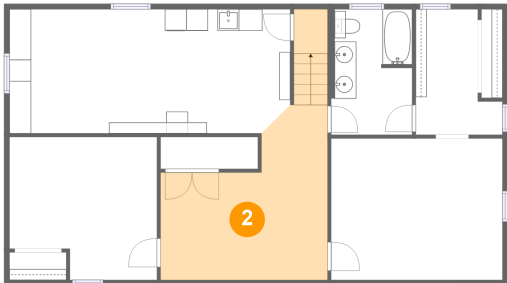
1 Floor 1 - Bedroom



Max Dimensions: 15'10" x 13'1"
Calculated Area: 206 sq. ft
Included: Yes

Heated: Yes
Finished: Yes
Enclosed: Yes
Contiguous: Yes
Permitted: Yes
Wet space: No
Addition: No
Conversion: No

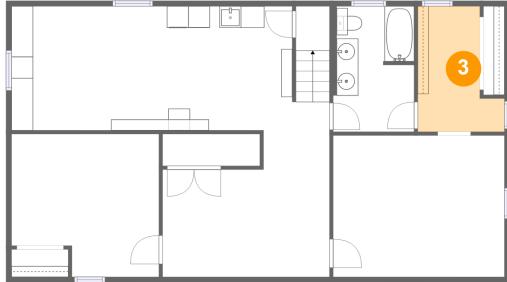
2 Floor 1 - Sitting Room



Max Dimensions: 15'5" x 16'2"
Calculated Area: 215 sq. ft
Included: Yes

Heated: Yes
Finished: Yes
Enclosed: Yes
Contiguous: Yes
Permitted: Yes
Wet space: No
Addition: No
Conversion: No

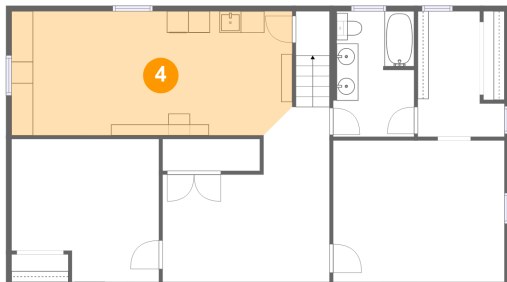
3 Floor 1 - W.I.C.



Max Dimensions: 8'0" x 11'7"
Calculated Area: 73 sq. ft
Included: Yes

Heated: Yes
Finished: Yes
Enclosed: Yes
Contiguous: Yes
Permitted: Yes
Wet space: No
Addition: No
Conversion: No

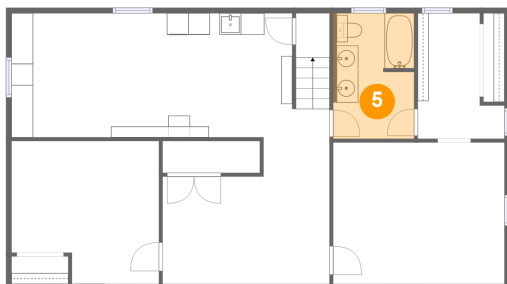
4 Floor 1 - Utility



Max Dimensions: 25'11" x 11'5"
Calculated Area: 293 sq. ft
Included: No

Heated: Yes
Finished: No
Enclosed: Yes
Contiguous: Yes
Permitted: Yes
Wet space: No
Addition: No
Conversion: No

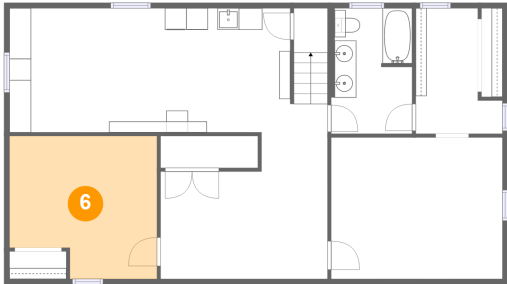
5 Floor 1 - Bath



Max Dimensions: 7'6" x 11'7"
Calculated Area: 86 sq. ft
Included: Yes

Heated: Yes
Finished: Yes
Enclosed: Yes
Contiguous: Yes
Permitted: Yes
Wet space: Yes
Addition: No
Conversion: No

6 Floor 1 - Bedroom



Max Dimensions: 13'7" x 13'2"
Calculated Area: 163 sq. ft
Included: Yes

Heated: Yes
Finished: Yes
Enclosed: Yes
Contiguous: Yes
Permitted: Yes
Wet space: No
Addition: No
Conversion: No

7 Floor 2 - Bedroom



Max Dimensions: 10'6" x 11'6"
Calculated Area: 121 sq. ft
Included: Yes

Heated: Yes
Finished: Yes
Enclosed: Yes
Contiguous: Yes
Permitted: Yes
Wet space: No
Addition: No
Conversion: No

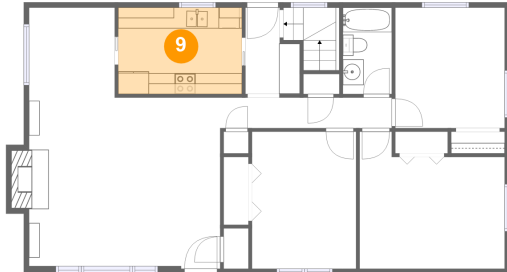
8 Floor 2 - Living Room



Max Dimensions: 18'3" x 16'4"
Calculated Area: 305 sq. ft
Included: Yes

Heated: Yes
Finished: Yes
Enclosed: Yes
Contiguous: Yes
Permitted: Yes
Wet space: No
Addition: No
Conversion: No

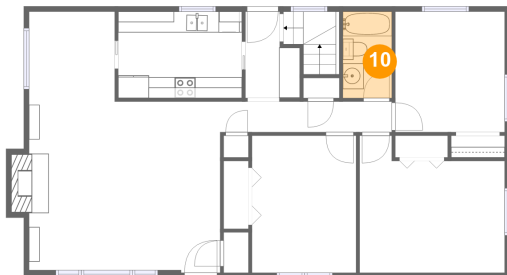
9 Floor 2 - Kitchen



Max Dimensions: 11'10" x 8'3"
Calculated Area: 98 sq. ft
Included: Yes

Heated: Yes
Finished: Yes
Enclosed: Yes
Contiguous: Yes
Permitted: Yes
Wet space: No
Addition: No
Conversion: No

10 Floor 2 - Bath



Max Dimensions: 4'8" x 8'3"
Calculated Area: 39 sq. ft
Included: Yes

Heated: Yes
Finished: Yes
Enclosed: Yes
Contiguous: Yes
Permitted: Yes
Wet space: Yes
Addition: No
Conversion: No

11 Floor 2 - Dining Area



Max Dimensions: 8'2" x 8'7"
Calculated Area: 70 sq. ft
Included: Yes

Heated: Yes
Finished: Yes
Enclosed: Yes
Contiguous: Yes
Permitted: Yes
Wet space: No
Addition: No
Conversion: No

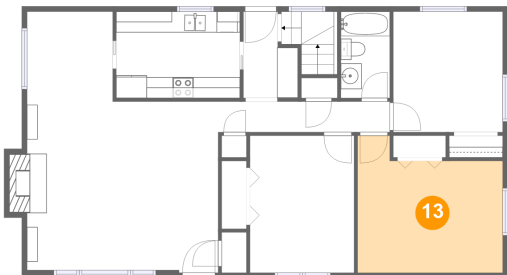
12 Floor 2 - Hall



Max Dimensions: 16'5" x 2'11"
Calculated Area: 48 sq. ft
Included: Yes

Heated: Yes
Finished: Yes
Enclosed: Yes
Contiguous: Yes
Permitted: Yes
Wet space: No
Addition: No
Conversion: No

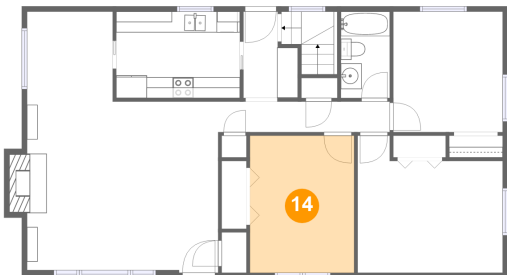
13 Floor 2 - Primary Bedroom



Max Dimensions: 13'11" x 13'1"
Calculated Area: 156 sq. ft
Included: Yes

Heated: Yes
Finished: Yes
Enclosed: Yes
Contiguous: Yes
Permitted: Yes
Wet space: No
Addition: No
Conversion: No

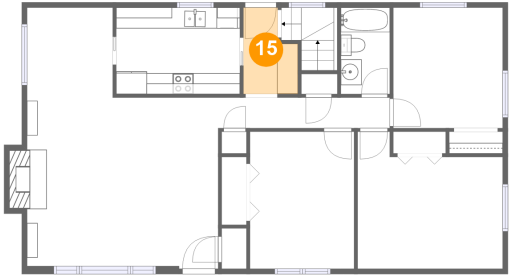
14 Floor 2 - Bedroom



Max Dimensions: 10'0" x 13'1"
Calculated Area: 131 sq. ft
Included: Yes

Heated: Yes
Finished: Yes
Enclosed: Yes
Contiguous: Yes
Permitted: Yes
Wet space: No
Addition: No
Conversion: No

15 Floor 2 - Entry



Max Dimensions: 3'3" x 8'3"
Calculated Area: 36 sq. ft
Included: Yes

Heated: Yes
Finished: Yes
Enclosed: Yes
Contiguous: Yes
Permitted: Yes
Wet space: No
Addition: No
Conversion: No