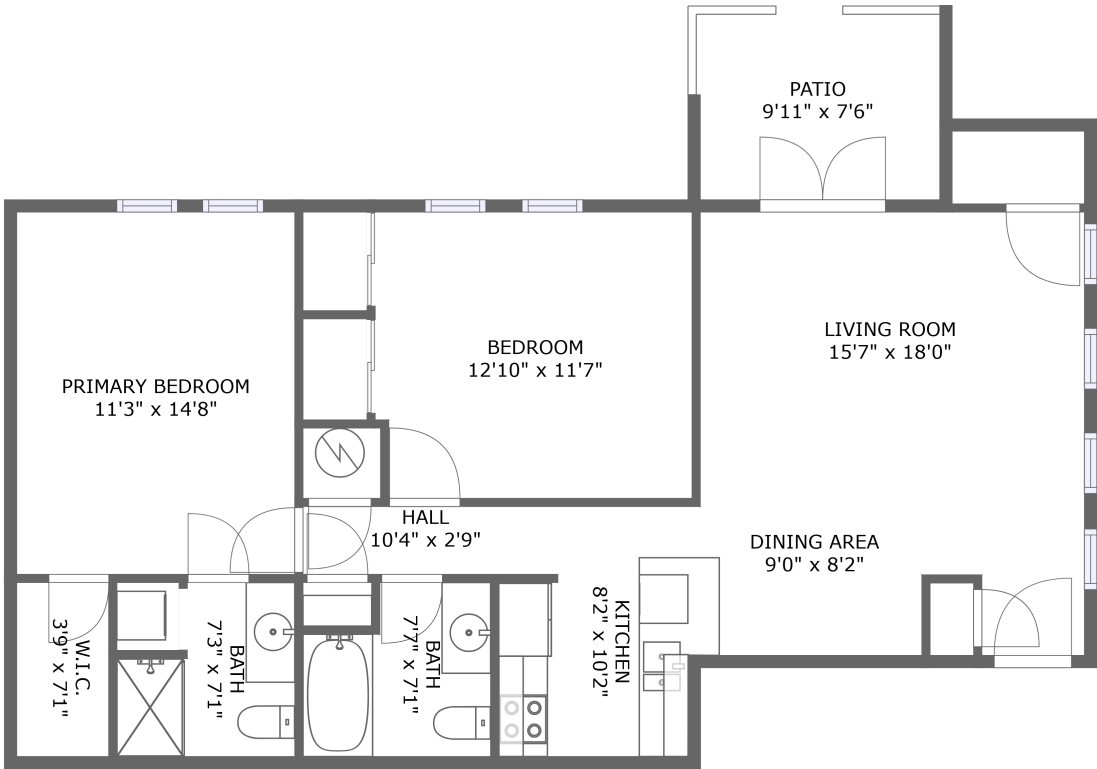


Home report

720 Lyndhurst Street, Wood Street, Dunedin, Pinellas County,
Florida, United States, 34698, 1101



FLOOR 1


Total Area: 909 sq. ft

Floor 1: 909 sq. ft

Excluded: Outdoor Patio 74 sq. ft, Walls: 72 sq. ft

Property summary

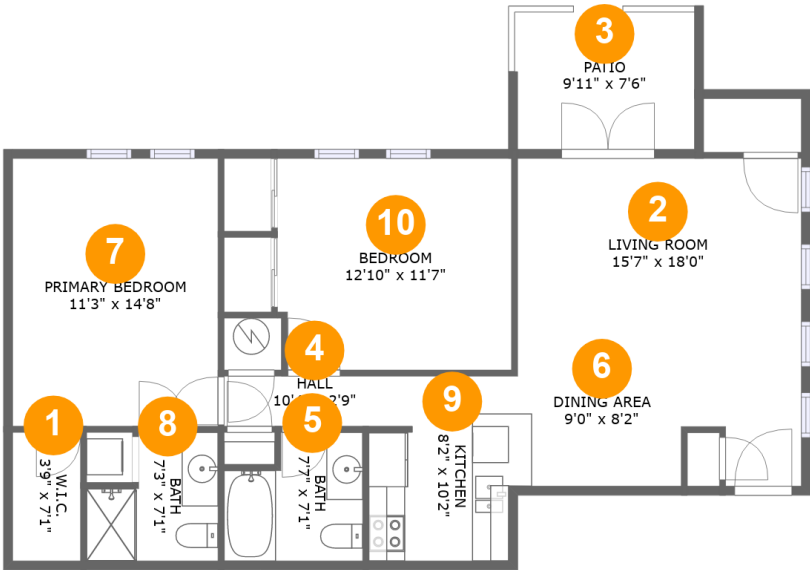
 1 Floors

 2 Bedrooms

 2 Bathrooms

Home report

720 Lyndhurst Street, Wood Street, Dunedin, Pinellas County,
Florida, United States, 34698, 1101



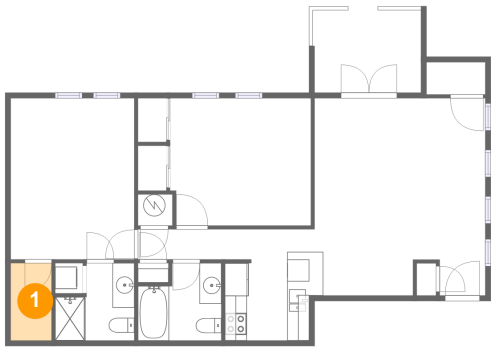
Room dimensions

Floor 1 Total:909sqft Excluded: 74sqft

#		Max Dimensions	sqft	Included
1	W.I.C.	3'9" x 7'1"	26 sq. ft	Yes
2	Living Room	15'7" x 18'0"	198 sq. ft	Yes
3	Patio	9'11" x 7'6"	74 sq. ft	No
4	Hall	10'4" x 2'9"	28 sq. ft	Yes
5	Bath	7'7" x 7'1"	47 sq. ft	Yes
6	Dining Area	9'0" x 8'2"	74 sq. ft	Yes
7	Primary Bedroom	11'3" x 14'8"	166 sq. ft	Yes
8	Bath	7'3" x 7'1"	42 sq. ft	Yes
9	Kitchen	8'2" x 10'2"	73 sq. ft	Yes
10	Bedroom	12'10" x 11'7"	147 sq. ft	Yes

720 Lyndhurst Street, Wood Street, Dunedin, Pinellas County,
Florida, United States, 34698, 1101

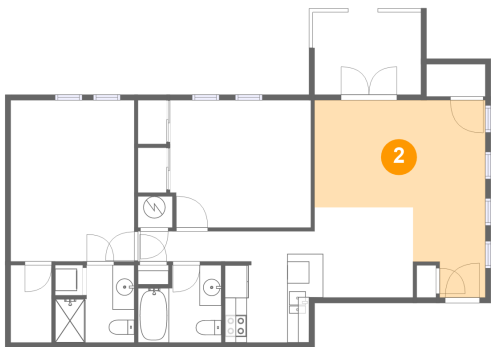
1 Floor 1 - W.I.C.



Max Dimensions: 3'9" x 7'1"
Calculated Area: 26 sq. ft
Included: Yes

Heated: Yes
Finished: Yes
Enclosed: Yes
Contiguous: Yes
Permitted: Yes
Wet space: No
Addition: No
Conversion: No

2 Floor 1 - Living Room

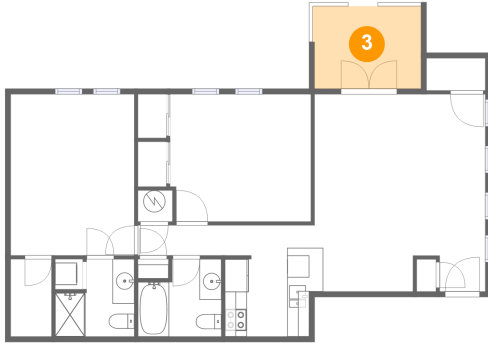


Max Dimensions: 15'7" x 18'0"
Calculated Area: 198 sq. ft
Included: Yes

Heated: Yes
Finished: Yes
Enclosed: Yes
Contiguous: Yes
Permitted: Yes
Wet space: No
Addition: No
Conversion: No

720 Lyndhurst Street, Wood Street, Dunedin, Pinellas County,
Florida, United States, 34698, 1101

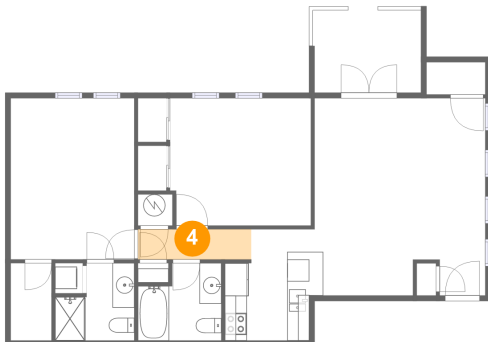
3 Floor 1 - Patio



Max Dimensions: 9'11" x 7'6"
Calculated Area: 74 sq. ft
Included: No

Heated: No
Finished: Yes
Enclosed: No
Contiguous: Yes
Permitted: Yes
Wet space: No
Addition: No
Conversion: No

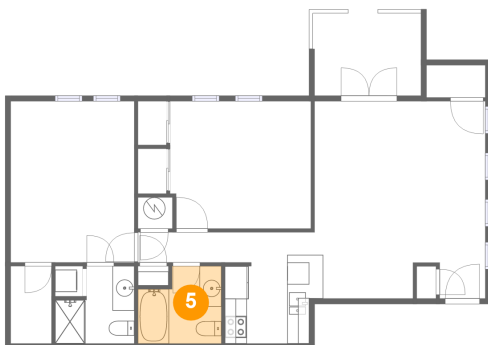
4 Floor 1 - Hall



Max Dimensions: 10'4" x 2'9"
Calculated Area: 28 sq. ft
Included: Yes

Heated: Yes
Finished: Yes
Enclosed: Yes
Contiguous: Yes
Permitted: Yes
Wet space: No
Addition: No
Conversion: No

5 Floor 1 - Bath

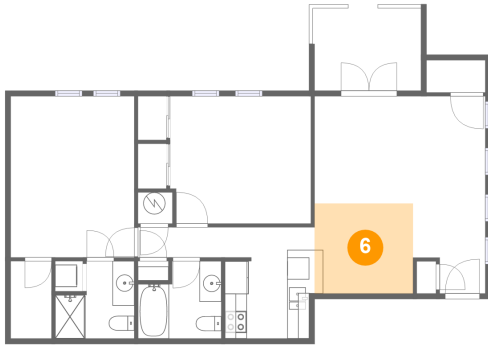


Max Dimensions: 7'7" x 7'1"
Calculated Area: 47 sq. ft
Included: Yes

Heated: Yes
Finished: Yes
Enclosed: Yes
Contiguous: Yes
Permitted: Yes
Wet space: Yes
Addition: No
Conversion: No

720 Lyndhurst Street, Wood Street, Dunedin, Pinellas County,
Florida, United States, 34698, 1101

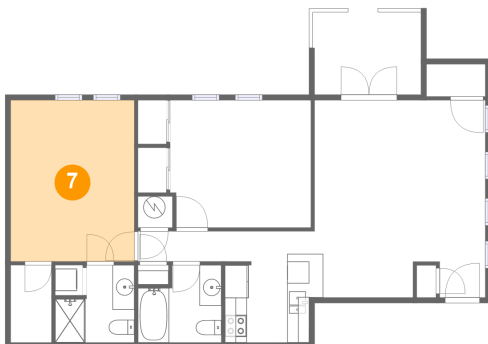
6 Floor 1 - Dining Area



Max Dimensions: 9'0" x 8'2"
Calculated Area: 74 sq. ft
Included: Yes

Heated: Yes
Finished: Yes
Enclosed: Yes
Contiguous: Yes
Permitted: Yes
Wet space: No
Addition: No
Conversion: No

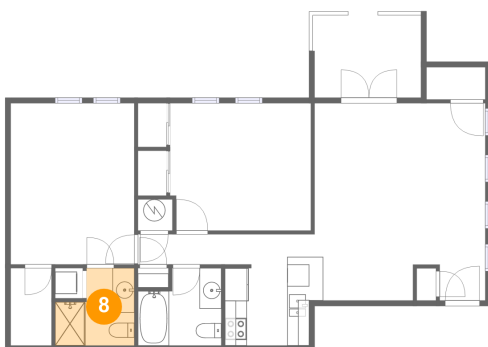
7 Floor 1 - Primary Bedroom



Max Dimensions: 11'3" x 14'8"
Calculated Area: 166 sq. ft
Included: Yes

Heated: Yes
Finished: Yes
Enclosed: Yes
Contiguous: Yes
Permitted: Yes
Wet space: No
Addition: No
Conversion: No

8 Floor 1 - Bath

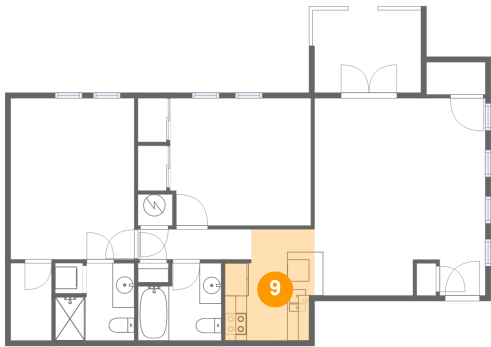


Max Dimensions: 7'3" x 7'1"
Calculated Area: 42 sq. ft
Included: Yes

Heated: Yes
Finished: Yes
Enclosed: Yes
Contiguous: Yes
Permitted: Yes
Wet space: Yes
Addition: No
Conversion: No

720 Lyndhurst Street, Wood Street, Dunedin, Pinellas County,
Florida, United States, 34698, 1101

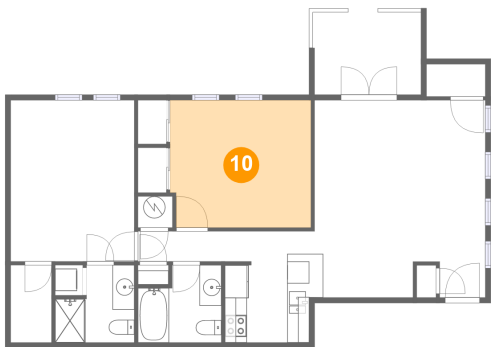
9 Floor 1 - Kitchen



Max Dimensions: 8'2" x 10'2"
Calculated Area: 73 sq. ft
Included: Yes

Heated: Yes
Finished: Yes
Enclosed: Yes
Contiguous: Yes
Permitted: Yes
Wet space: No
Addition: No
Conversion: No

10 Floor 1 - Bedroom



Max Dimensions: 12'10" x 11'7"
Calculated Area: 147 sq. ft
Included: Yes

Heated: Yes
Finished: Yes
Enclosed: Yes
Contiguous: Yes
Permitted: Yes
Wet space: No
Addition: No
Conversion: No