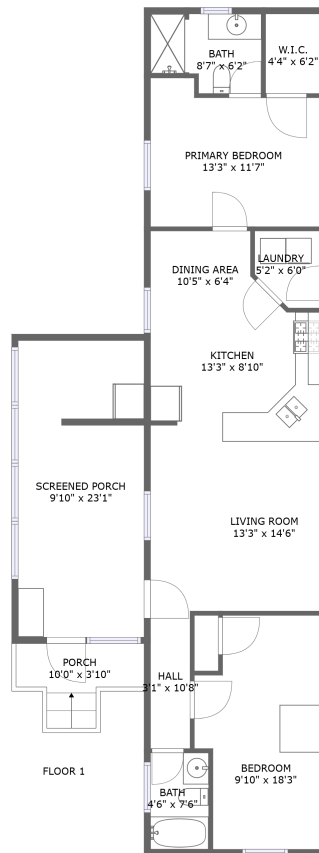




29641 Maple Rd, Lewes, DE, US



Property summary


 **0** Garages

 **2** Bedrooms

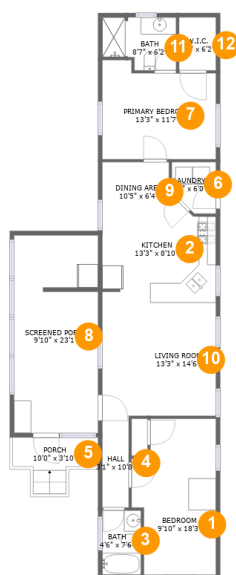
 **2** Bathrooms

 **0** Half baths

 **1** Floors

 **887** Gross living area sqft

 **1,235** Total sqft

29641 Maple Rd, Lewes, DE, US**Room dimensions**

Floor 1

Total sqft: 1235 Living area: 887

#		Dimensions	sqft	Counted as living area
1	Bedroom	9'10" x 18'3"	158 sq. ft	Yes
2	Kitchen	13'3" x 8'10"	116 sq. ft	Yes
3	Bath	4'6" x 7'6"	34 sq. ft	Yes
4	Hall	3'1" x 10'8"	33 sq. ft	Yes
5	Porch	10'0" x 3'10"	46 sq. ft	No
6	Laundry	5'2" x 6'0"	27 sq. ft	Yes
7	Primary Bedroom	13'3" x 11'7"	138 sq. ft	Yes
8	Screened Porch	9'10" x 23'1"	223 sq. ft	No
9	Dining Area	10'5" x 6'4"	53 sq. ft	Yes
10	Living Room	13'3" x 14'6"	192 sq. ft	Yes
11	Bath	8'7" x 6'2"	47 sq. ft	No

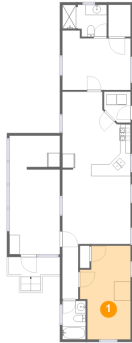
Scan captured on Mon, 17 Mar 2025 19:16:15 GMT

Information is calculated by Cubicasa technology deemed highly reliable but not guaranteed.

29641 Maple Rd, Lewes, DE, US

#		Dimensions	sqft	Counted as living area
12	W.I.C.	4'4" x 6'2"	27 sq. ft	Yes

1 Floor 1 - Bedroom



Dimensions: 9'10" x 18'3"
Area: 158 sq. ft
Counted as living area: Yes

Heated: Yes
Finished: Yes
Enclosed: Yes
Contiguous: Yes
Permitted: Yes
Wet space: No
Addition: No
Conversion: No

2 Floor 1 - Kitchen



Dimensions: 13'3" x 8'10"
Area: 116 sq. ft
Counted as living area: Yes

Heated: Yes
Finished: Yes
Enclosed: Yes
Contiguous: Yes
Permitted: Yes
Wet space: No
Addition: No
Conversion: No

3 Floor 1 - Bath



Dimensions: 4'6" x 7'6"
Area: 34 sq. ft
Counted as living area: Yes

Heated: Yes
Finished: Yes
Enclosed: Yes
Contiguous: Yes
Permitted: Yes
Wet space: Yes
Addition: No
Conversion: No

4 Floor 1 - Hall



Dimensions: 3'1" x 10'8"
Area: 33 sq. ft
Counted as living area: Yes

Heated: Yes
Finished: Yes
Enclosed: Yes
Contiguous: Yes
Permitted: Yes
Wet space: No
Addition: No
Conversion: No

5 Floor 1 - Porch



Dimensions: 10'0" x 3'10"
Area: 46 sq. ft
Counted as living area: No

Heated: No
Finished: Yes
Enclosed: No
Contiguous: Yes
Permitted: Yes
Wet space: No
Addition: No
Conversion: No

29641 Maple Rd, Lewes, DE, US

6 Floor 1 - Laundry



Dimensions: 5'2" x 6'0"
Area: 27 sq. ft
Counted as living area: Yes

Heated: Yes
Finished: Yes
Enclosed: Yes
Contiguous: Yes
Permitted: Yes
Wet space: No
Addition: No
Conversion: No

7 Floor 1 - Primary Bedroom



Dimensions: 13'3" x 11'7"
Area: 138 sq. ft
Counted as living area: Yes

Heated: Yes
Finished: Yes
Enclosed: Yes
Contiguous: Yes
Permitted: Yes
Wet space: No
Addition: No
Conversion: No

8 Floor 1 - Screened Porch



Dimensions: 9'10" x 23'1"
Area: 223 sq. ft
Counted as living area: No

Heated: No
Finished: Yes
Enclosed: No
Contiguous: Yes
Permitted: Yes
Wet space: No
Addition: No
Conversion: No

29641 Maple Rd, Lewes, DE, US

9 Floor 1 - Dining Area



Dimensions: 10'5" x 6'4"
Area: 53 sq. ft
Counted as living area: Yes

Heated: Yes
Finished: Yes
Enclosed: Yes
Contiguous: Yes
Permitted: Yes
Wet space: No
Addition: No
Conversion: No

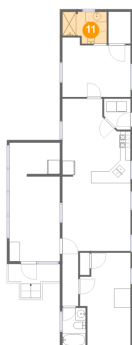
10 Floor 1 - Living Room



Dimensions: 13'3" x 14'6"
Area: 192 sq. ft
Counted as living area: Yes

Heated: Yes
Finished: Yes
Enclosed: Yes
Contiguous: Yes
Permitted: Yes
Wet space: No
Addition: No
Conversion: No

11 Floor 1 - Bath



Dimensions: 8'7" x 6'2"
Area: 47 sq. ft
Counted as living area: No

Heated: Yes
Finished: Yes
Enclosed: Yes
Contiguous: No
Permitted: Yes
Wet space: Yes
Addition: No
Conversion: No

12 Floor 1 - W.I.C.



Dimensions: 4'4" x 6'2"
Area: 27 sq. ft
Counted as living area: Yes

Heated: Yes
Finished: Yes
Enclosed: Yes
Contiguous: Yes
Permitted: Yes
Wet space: No
Addition: No
Conversion: No