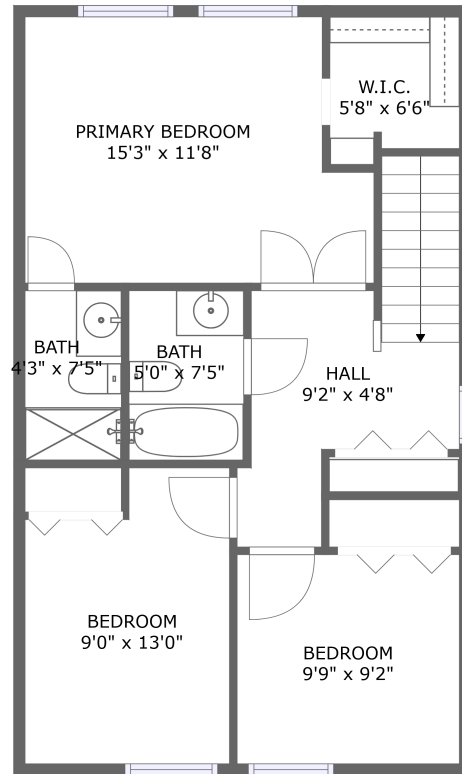
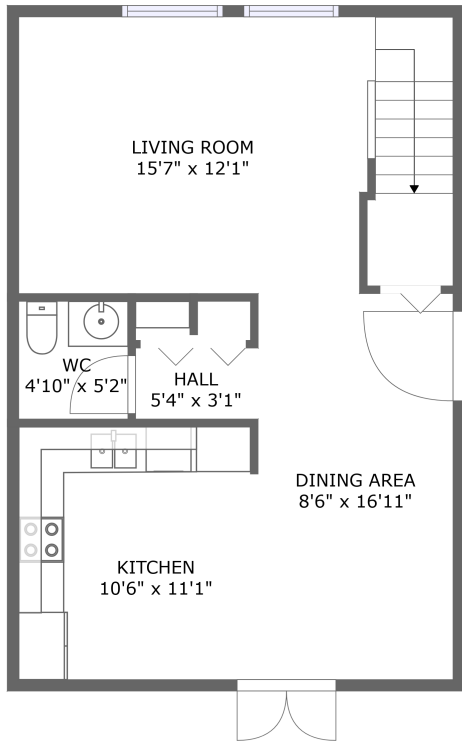


1864 Clearbrook Drive, Whitney Lakes, Clearwater, Pinellas County, Florida, United




Property Summary

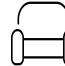
 **0** garages

 **3** bedrooms

 **2** bathrooms

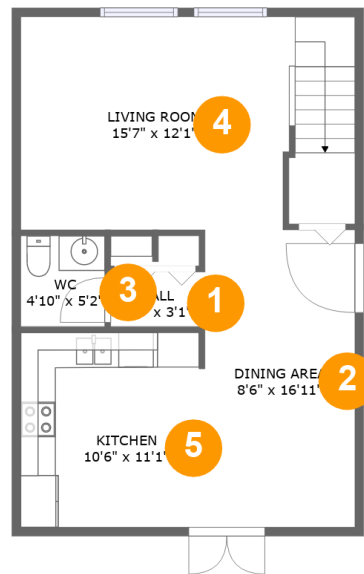
 **1** half baths

 **2** floors

 **1,265** Gross Living Area sqft

 **1,265** total sqft

1864 Clearbrook Drive, Whitney Lakes, Clearwater, Pinellas County, Florida, United

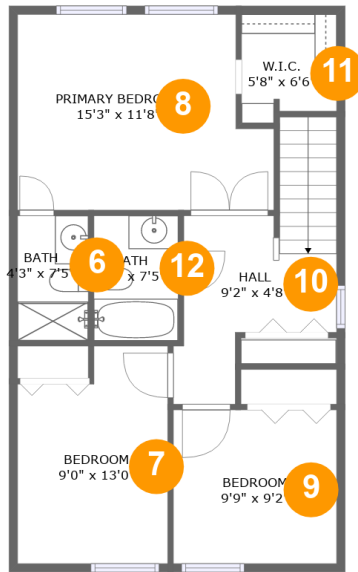


Room Dimensions

Floor 1**Total sqft: 596****Living area: 596**

#	Room name	Dimensions	Area (sqft)	Counted as Living Area
1	Hall	5'4" x 3'1"	17 sq. ft	Yes
2	Dining Area	8'6" x 16'11"	145 sq. ft	Yes
3	Wc	4'10" x 5'2"	25 sq. ft	Yes
4	Living Room	15'7" x 12'1"	208 sq. ft	Yes
5	Kitchen	10'6" x 11'1"	116 sq. ft	Yes

1864 Clearbrook Drive, Whitney Lakes, Clearwater, Pinellas County, Florida, United



Room Dimensions

Floor 2

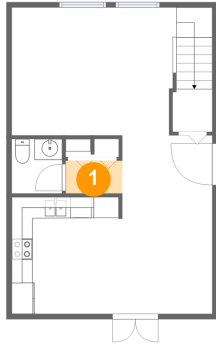
Total sqft: 669

Living area: 669

#	Room name	Dimensions	Area (sqft)	Counted as Living Area
6	Bath	4'3" x 7'5"	31 sq. ft	Yes
7	Bedroom	9'0" x 13'0"	106 sq. ft	Yes
8	Primary Bedroom	15'3" x 11'8"	163 sq. ft	Yes
9	Bedroom	9'9" x 9'2"	90 sq. ft	Yes
10	Hall	9'2" x 4'8"	99 sq. ft	Yes
11	W.i.c.	5'8" x 6'6"	34 sq. ft	Yes
12	Bath	5'0" x 7'5"	37 sq. ft	Yes

1864 Clearbrook Drive, Whitney Lakes, Clearwater, Pinellas County, Florida, United

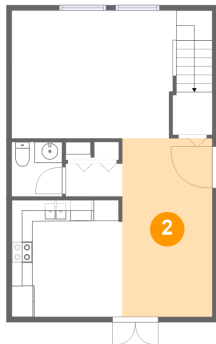
1 Floor 1 - Hall



Dimensions: 5'4" x 3'1"
Area: 17 sq. ft
Counted as Living Area:
Yes

Heated: Yes
Finished: Yes
Enclosed: Yes
Contiguous:
Yes
Permitted: Yes
Wet Space: No
Addition: No
Conversion: No

2 Floor 1 - Dining Area

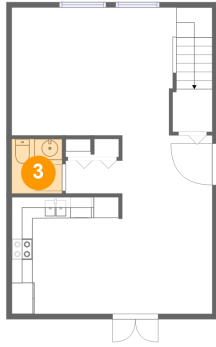


Dimensions: 8'6" x 16'11"
Area: 145 sq. ft
Counted as Living Area:
Yes

Heated: Yes
Finished: Yes
Enclosed: Yes
Contiguous:
Yes
Permitted: Yes
Wet Space: No
Addition: No
Conversion: No

1864 Clearbrook Drive, Whitney Lakes, Clearwater, Pinellas County, Florida, United

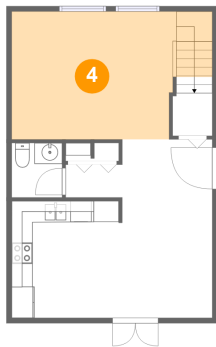
3 Floor 1 - Wc



Dimensions: 4'10" x 5'2"
Area: 25 sq. ft
Counted as Living Area:
Yes

Heated: Yes
Finished: Yes
Enclosed: Yes
Contiguous:
Yes
Permitted: Yes
Wet Space: Yes
Addition: No
Conversion: No

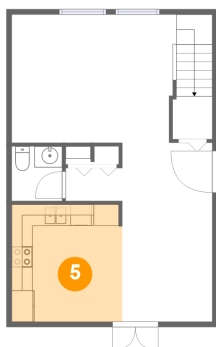
4 Floor 1 - Living Room



Dimensions: 15'7" x 12'1"
Area: 208 sq. ft
Counted as Living Area:
Yes

Heated: Yes
Finished: Yes
Enclosed: Yes
Contiguous:
Yes
Permitted: Yes
Wet Space: No
Addition: No
Conversion: No

5 Floor 1 - Kitchen

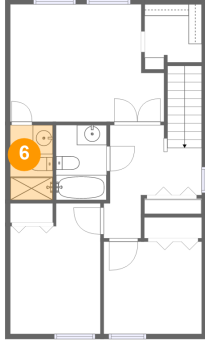


Dimensions: 10'6" x 11'1"
Area: 116 sq. ft
Counted as Living Area:
Yes

Heated: Yes
Finished: Yes
Enclosed: Yes
Contiguous:
Yes
Permitted: Yes
Wet Space: No
Addition: No
Conversion: No

1864 Clearbrook Drive, Whitney Lakes, Clearwater, Pinellas County, Florida, United

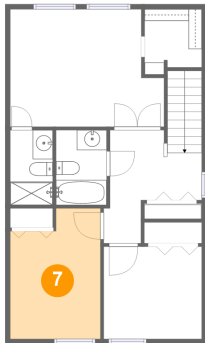
6 Floor 2 - Bath



Dimensions: 4'3" x 7'5"
Area: 31 sq. ft
Counted as Living Area:
Yes

Heated: Yes
Finished: Yes
Enclosed: Yes
Contiguous:
Yes
Permitted: Yes
Wet Space: Yes
Addition: No
Conversion: No

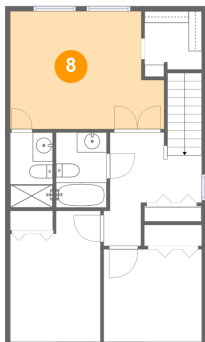
7 Floor 2 - Bedroom



Dimensions: 9'0" x 13'0"
Area: 106 sq. ft
Counted as Living Area:
Yes

Heated: Yes
Finished: Yes
Enclosed: Yes
Contiguous:
Yes
Permitted: Yes
Wet Space: No
Addition: No
Conversion: No

8 Floor 2 - Primary Bedroom

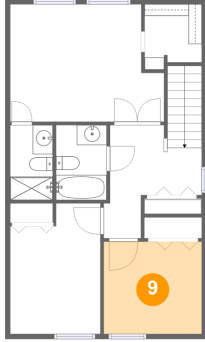


Dimensions: 15'3" x 11'8"
Area: 163 sq. ft
Counted as Living Area:
Yes

Heated: Yes
Finished: Yes
Enclosed: Yes
Contiguous:
Yes
Permitted: Yes
Wet Space: No
Addition: No
Conversion: No

1864 Clearbrook Drive, Whitney Lakes, Clearwater, Pinellas County, Florida, United

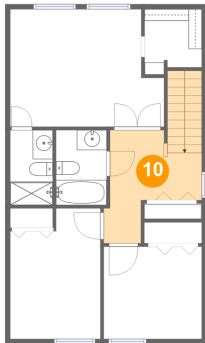
9 Floor 2 - Bedroom



Dimensions: 9'9" x 9'2"
Area: 90 sq. ft
Counted as Living Area:
Yes

Heated: Yes
Finished: Yes
Enclosed: Yes
Contiguous:
Yes
Permitted: Yes
Wet Space: No
Addition: No
Conversion: No

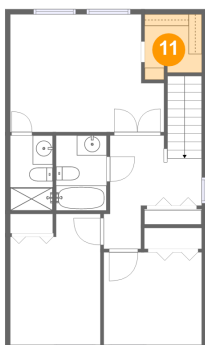
10 Floor 2 - Hall



Dimensions: 9'2" x 4'8"
Area: 99 sq. ft
Counted as Living Area:
Yes

Heated: Yes
Finished: Yes
Enclosed: Yes
Contiguous:
Yes
Permitted: Yes
Wet Space: No
Addition: No
Conversion: No

11 Floor 2 - W.i.c.

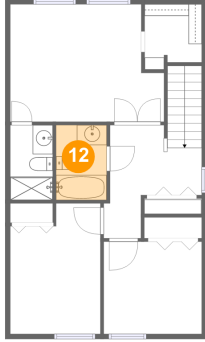


Dimensions: 5'8" x 6'6"
Area: 34 sq. ft
Counted as Living Area:
Yes

Heated: Yes
Finished: Yes
Enclosed: Yes
Contiguous:
Yes
Permitted: Yes
Wet Space: No
Addition: No
Conversion: No

1864 Clearbrook Drive, Whitney Lakes, Clearwater, Pinellas County, Florida, United

12 Floor 2 - Bath



Dimensions: 5'0" x 7'5"
Area: 37 sq. ft
Counted as Living Area:
Yes

Heated: Yes
Finished: Yes
Enclosed: Yes
Contiguous:
Yes
Permitted: Yes
Wet Space: Yes
Addition: No
Conversion: No