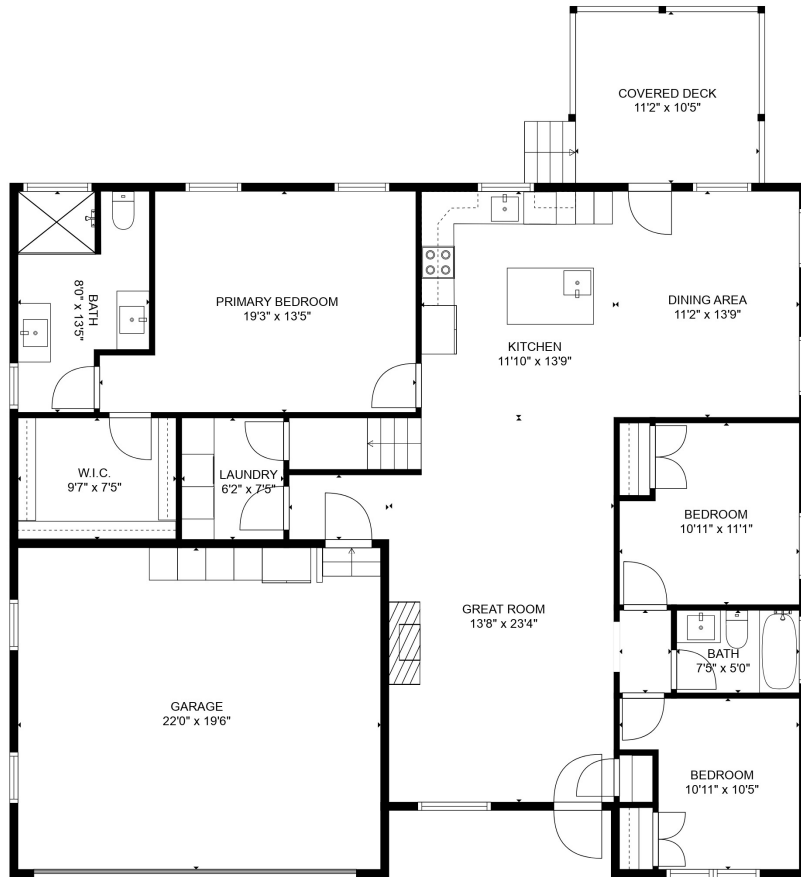
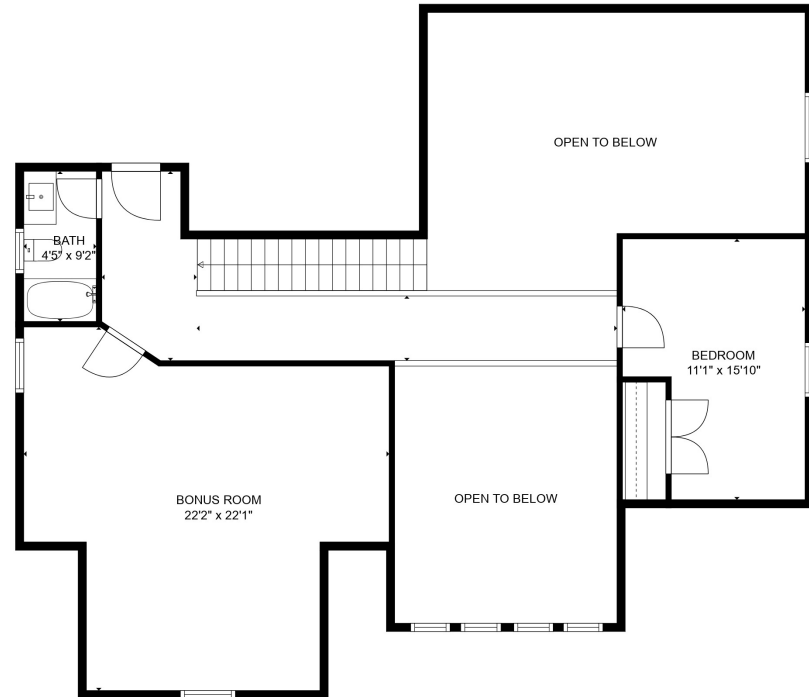


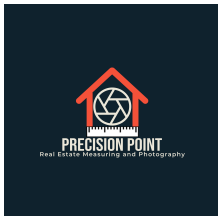
246 E. Rambo Rd. Rock Hill, SC 29730  
 Estimated Heated Living Area (HLA)  
 First Floor HLA 1,563 sqft; Second Floor 904 sqft; Garage 548 sqft  
 Total HLA 2,468 sqft Total Measured 4,152 sqft  
 Date Measured: 08/13/2024



FLOOR 1



FLOOR 2

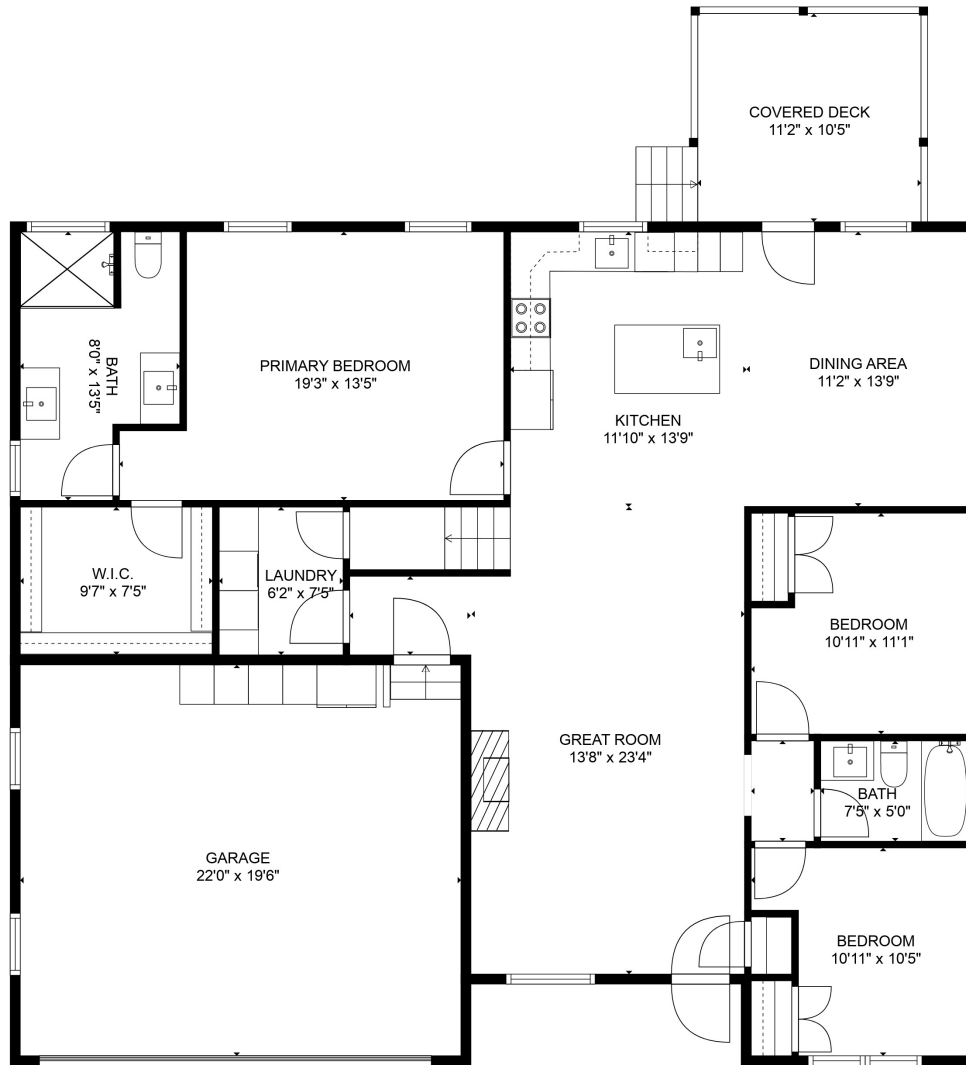


Precision Point Real Estate Measuring  
 and Photography, LLC.  
 PrecisionPointServices.com

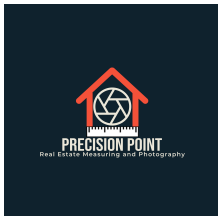
HLA verified by hands-on measurements per ANSI standards. Room dimensions may vary.

For a more accurate measurement, I use the Official ANSI Z765 Handbook and the current "North Carolina Residential Square Footage Guideline" approved by the American National Standards Institute (ANSI) and recognized by the North Carolina Real Estate Commission for single-family dwellings and townhouses for both North and South Carolina when measuring.





**First Floor 1,563 sqft**

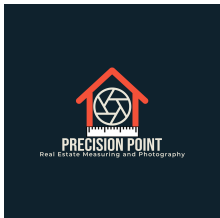
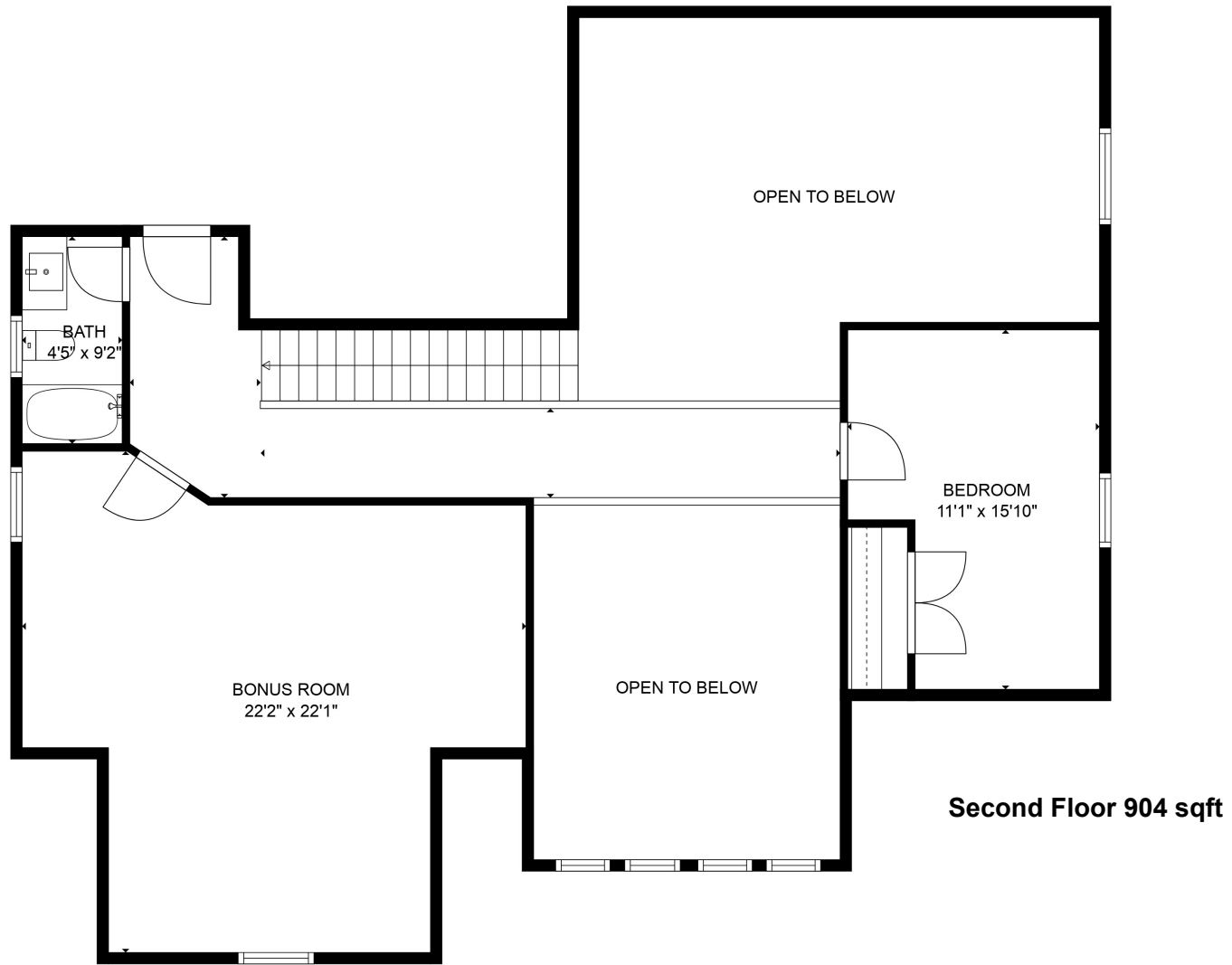


**Precision Point Real Estate Measuring and Photography, LLC.**  
 PrecisionPointServices.com

HLA verified by hands-on measurements per ANSI standards. Room dimensions may vary.

For a more accurate measurement, I use the Official ANSI Z765 Handbook and the current "North Carolina Residential Square Footage Guideline" approved by the American National Standards Institute (ANSI) and recognized by the North Carolina Real Estate Commission for single-family dwellings and townhouses for both North and South Carolina when measuring.





Precision Point Real Estate Measuring  
and Photography, LLC.  
PrecisionPointServices.com

HLA verified by hands-on measurements per ANSI standards. Room dimensions may vary.

For a more accurate measurement, I use the Official ANSI Z765 Handbook and the current "North Carolina Residential Square Footage Guideline" approved by the American National Standards Institute (ANSI) and recognized by the North Carolina Real Estate Commission for single-family dwellings and townhouses for both North and South Carolina when measuring.

