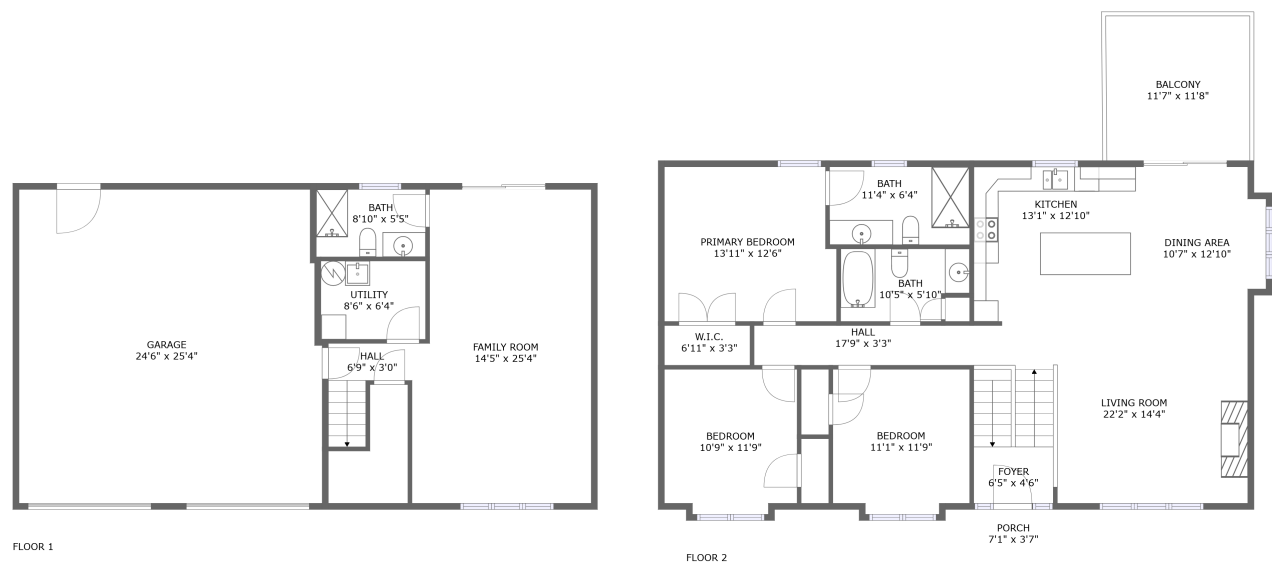




Home report


1825 Parker Lane, River Edge, Vinton, Roanoke County, Virginia,  
United States, 24179




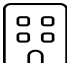
Property summary


 **1** Garages


 **3** Bedrooms

 **3** Bathrooms

 **0** Half baths

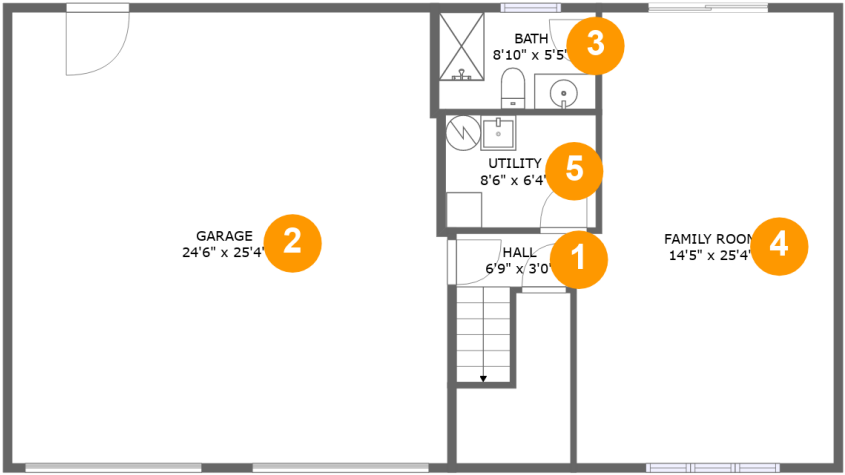
 **2** Floors

 **1,979** Gross living area sqft

 **2,789** Total sqft

Home report

1825 Parker Lane, River Edge, Vinton, Roanoke County, Virginia,  
United States, 24179



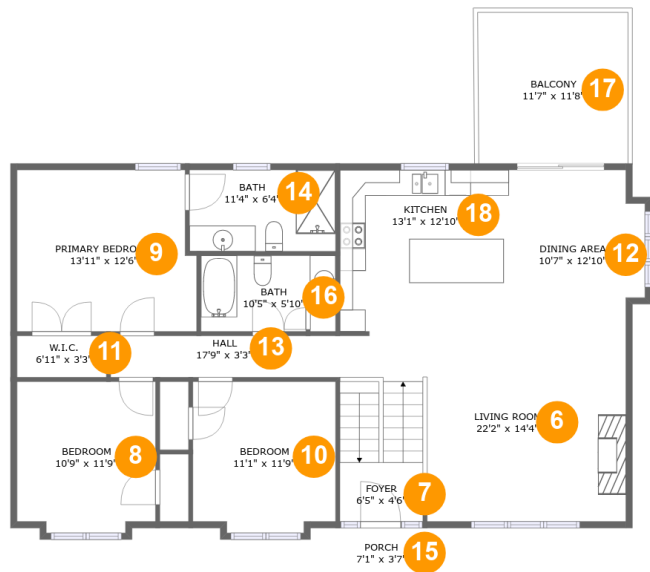
Room dimensions

Floor 1 Total sqft: 1246    Living area: 597

#		Dimensions	sqft	Counted as living area
1	Hall	6'9" x 3'0"	36 sq. ft	Yes
2	Garage	24'6" x 25'4"	612 sq. ft	No
3	Bath	8'10" x 5'5"	48 sq. ft	Yes
4	Family Room	14'5" x 25'4"	350 sq. ft	Yes
5	Utility	8'6" x 6'4"	54 sq. ft	Yes

Home report

1825 Parker Lane, River Edge, Vinton, Roanoke County, Virginia,  
United States, 24179



Room dimensions

Floor 2

Total sqft: 1543    Living area: 1382

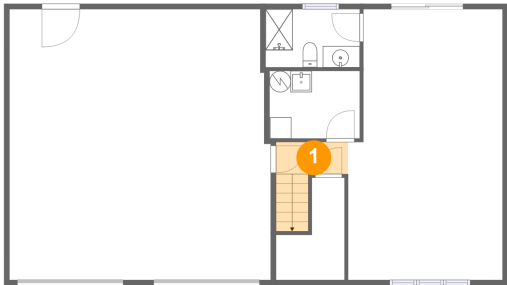
#		Dimensions	sqft	Counted as living area
6	Living Room	22'2" x 14'4"	288 sq. ft	Yes
7	Foyer	6'5" x 4'6"	29 sq. ft	Yes
8	Bedroom	10'9" x 11'9"	122 sq. ft	Yes
9	Primary Bedroom	13'11" x 12'6"	168 sq. ft	Yes
10	Bedroom	11'1" x 11'9"	125 sq. ft	Yes
11	W.I.C.	6'11" x 3'3"	22 sq. ft	Yes
12	Dining Area	10'7" x 12'10"	127 sq. ft	Yes
13	Hall	17'9" x 3'3"	57 sq. ft	Yes
14	Bath	11'4" x 6'4"	71 sq. ft	Yes
15	Porch	7'1" x 3'7"	25 sq. ft	No
16	Bath	10'5" x 5'10"	56 sq. ft	Yes

Home report

**1825 Parker Lane, River Edge, Vinton, Roanoke County, Virginia,  
United States, 24179**

#		Dimensions	sqft	Counted as living area
17	Balcony	11'7" x 11'8"	136 sq. ft	No
18	Kitchen	13'1" x 12'10"	167 sq. ft	Yes

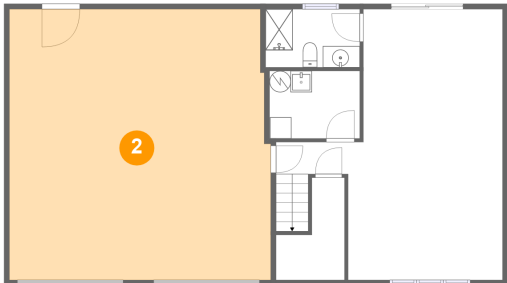
1 Floor 1 - Hall



Dimensions: 6'9" x 3'0"  
Area: 36 sq. ft  
Counted as living area: Yes

Heated: Yes  
Finished: Yes  
Enclosed: Yes  
Contiguous: Yes  
Permitted: Yes  
Wet space: No  
Addition: No  
Conversion: No

2 Floor 1 - Garage



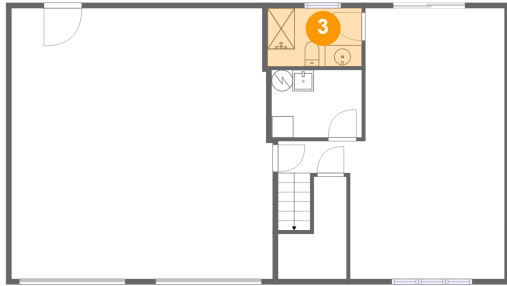
Dimensions: 24'6" x 25'4"  
Area: 612 sq. ft  
Counted as living area: No

Heated: No  
Finished: No  
Enclosed: Yes  
Contiguous: Yes  
Permitted: Yes  
Wet space: No  
Addition: No  
Conversion: No

## Home report

1825 Parker Lane, River Edge, Vinton, Roanoke County, Virginia,  
United States, 24179

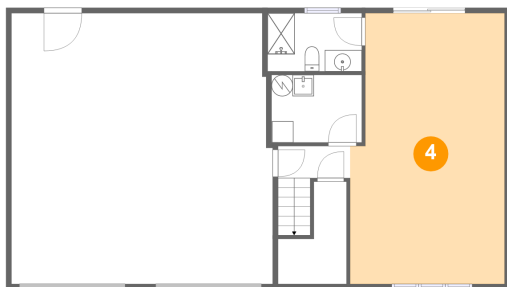
### 3 Floor 1 - Bath



Dimensions: 8'10" x 5'5"  
Area: 48 sq. ft  
Counted as living area: Yes

Heated: Yes  
Finished: Yes  
Enclosed: Yes  
Contiguous: Yes  
Permitted: Yes  
Wet space: Yes  
Addition: No  
Conversion: No

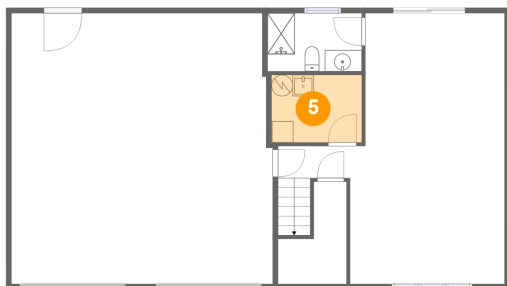
### 4 Floor 1 - Family Room



Dimensions: 14'5" x 25'4"  
Area: 350 sq. ft  
Counted as living area: Yes

Heated: Yes  
Finished: Yes  
Enclosed: Yes  
Contiguous: Yes  
Permitted: Yes  
Wet space: No  
Addition: No  
Conversion: No

### 5 Floor 1 - Utility



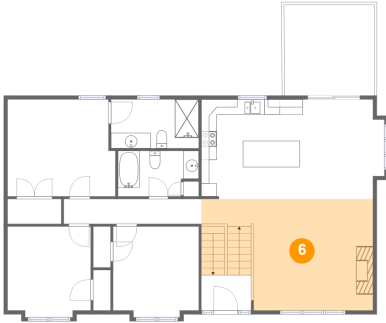
Dimensions: 8'6" x 6'4"  
Area: 54 sq. ft  
Counted as living area: Yes

Heated: Yes  
Finished: Yes  
Enclosed: Yes  
Contiguous: Yes  
Permitted: Yes  
Wet space: No  
Addition: No  
Conversion: No

## Home report

1825 Parker Lane, River Edge, Vinton, Roanoke County, Virginia,  
United States, 24179

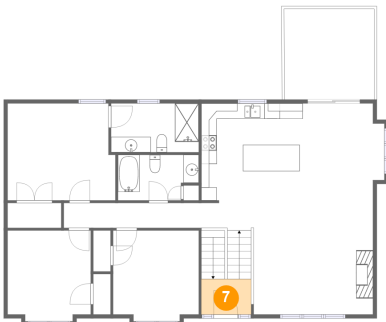
### 6 Floor 2 - Living Room



Dimensions: 22'2" x 14'4"  
Area: 288 sq. ft  
Counted as living area: Yes

Heated: Yes  
Finished: Yes  
Enclosed: Yes  
Contiguous: Yes  
Permitted: Yes  
Wet space: No  
Addition: No  
Conversion: No

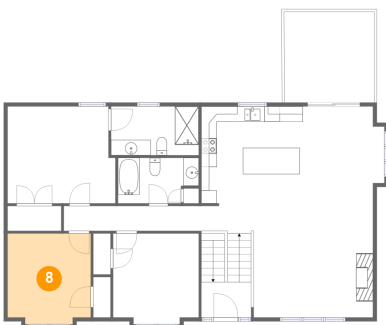
### 7 Floor 2 - Foyer



Dimensions: 6'5" x 4'6"  
Area: 29 sq. ft  
Counted as living area: Yes

Heated: Yes  
Finished: Yes  
Enclosed: Yes  
Contiguous: Yes  
Permitted: Yes  
Wet space: No  
Addition: No  
Conversion: No

### 8 Floor 2 - Bedroom



Dimensions: 10'9" x 11'9"  
Area: 122 sq. ft  
Counted as living area: Yes

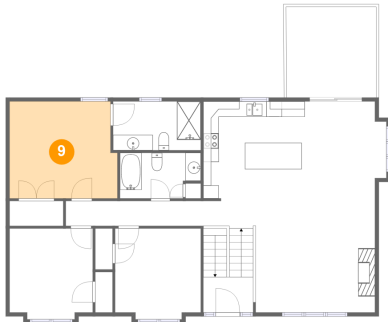
Heated: Yes  
Finished: Yes  
Enclosed: Yes  
Contiguous: Yes  
Permitted: Yes  
Wet space: No  
Addition: No  
Conversion: No

## Home report

1825 Parker Lane, River Edge, Vinton, Roanoke County, Virginia,  
United States, 24179

### 9 Floor 2 - Primary Bedroom

---



Dimensions: 13'11" x 12'6"  
Area: 168 sq. ft  
Counted as living area: Yes

Heated: Yes  
Finished: Yes  
Enclosed: Yes  
Contiguous: Yes  
Permitted: Yes  
Wet space: No  
Addition: No  
Conversion: No

### 10 Floor 2 - Bedroom

---



Dimensions: 11'1" x 11'9"  
Area: 125 sq. ft  
Counted as living area: Yes

Heated: Yes  
Finished: Yes  
Enclosed: Yes  
Contiguous: Yes  
Permitted: Yes  
Wet space: No  
Addition: No  
Conversion: No

### 11 Floor 2 - W.I.C.

---



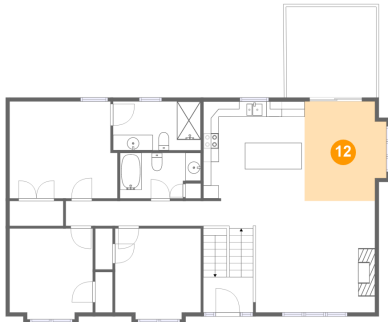
Dimensions: 6'11" x 3'3"  
Area: 22 sq. ft  
Counted as living area: Yes

Heated: Yes  
Finished: Yes  
Enclosed: Yes  
Contiguous: Yes  
Permitted: Yes  
Wet space: No  
Addition: No  
Conversion: No



1825 Parker Lane, River Edge, Vinton, Roanoke County, Virginia,  
United States, 24179

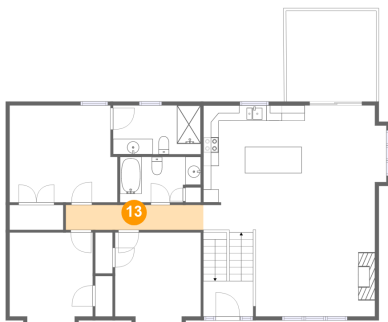
## 12 Floor 2 - Dining Area



Dimensions: 10'7" x 12'10"  
Area: 127 sq. ft  
Counted as living area: Yes

Heated: Yes  
Finished: Yes  
Enclosed: Yes  
Contiguous: Yes  
Permitted: Yes  
Wet space: No  
Addition: No  
Conversion: No

## 13 Floor 2 - Hall



Dimensions: 17'9" x 3'3"  
Area: 57 sq. ft  
Counted as living area: Yes

Heated: Yes  
Finished: Yes  
Enclosed: Yes  
Contiguous: Yes  
Permitted: Yes  
Wet space: No  
Addition: No  
Conversion: No

## 14 Floor 2 - Bath



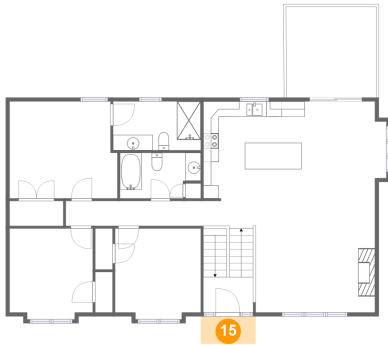
Dimensions: 11'4" x 6'4"  
Area: 71 sq. ft  
Counted as living area: Yes

Heated: Yes  
Finished: Yes  
Enclosed: Yes  
Contiguous: Yes  
Permitted: Yes  
Wet space: Yes  
Addition: No  
Conversion: No

## Home report

1825 Parker Lane, River Edge, Vinton, Roanoke County, Virginia,  
United States, 24179

### 15 Floor 2 - Porch



Dimensions: 7'1" x 3'7"  
Area: 25 sq. ft  
Counted as living area: No

Heated: No  
Finished: Yes  
Enclosed: No  
Contiguous: Yes  
Permitted: Yes  
Wet space: No  
Addition: No  
Conversion: No

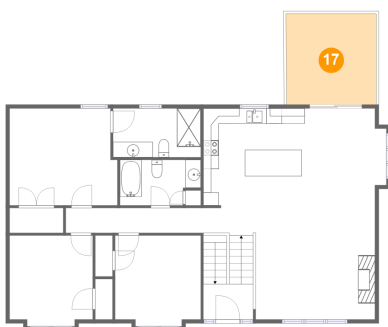
### 16 Floor 2 - Bath



Dimensions: 10'5" x 5'10"  
Area: 56 sq. ft  
Counted as living area: Yes

Heated: Yes  
Finished: Yes  
Enclosed: Yes  
Contiguous: Yes  
Permitted: Yes  
Wet space: Yes  
Addition: No  
Conversion: No

### 17 Floor 2 - Balcony

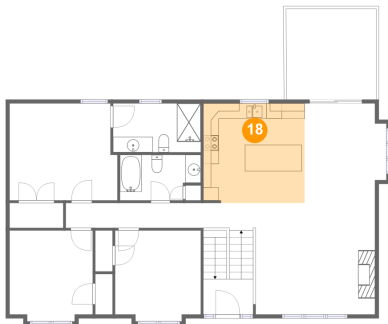


Dimensions: 11'7" x 11'8"  
Area: 136 sq. ft  
Counted as living area: No

Heated: No  
Finished: Yes  
Enclosed: No  
Contiguous: Yes  
Permitted: Yes  
Wet space: No  
Addition: No  
Conversion: No

1825 Parker Lane, River Edge, Vinton, Roanoke County, Virginia,  
United States, 24179

**18** Floor 2 - Kitchen



Dimensions: 13'1" x 12'10"  
Area: 167 sq. ft  
Counted as living area: Yes

Heated: Yes  
Finished: Yes  
Enclosed: Yes  
Contiguous: Yes  
Permitted: Yes  
Wet space: No  
Addition: No  
Conversion: No