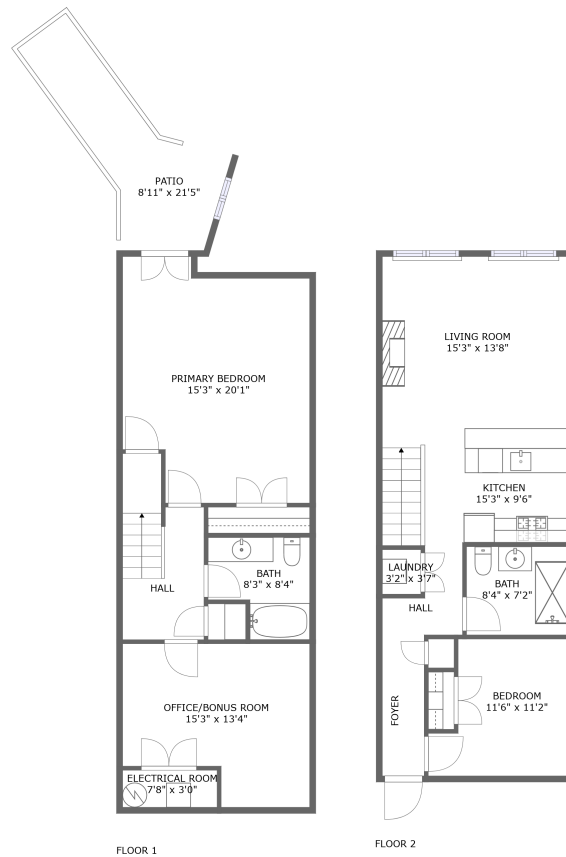



25 Clark Street, Glen Ridge, Essex County, New Jersey, United States, 07028, 202



Property summary

 **0** Garages

 **3** Bedrooms

 **2** Bathrooms

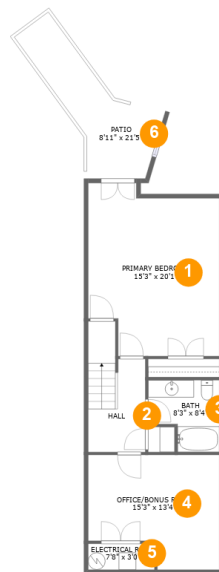
 **0** Half baths

 **2** Floors

 **1,289** Gross living area sqft

 **1,436** Total sqft

25 Clark Street, Glen Ridge, Essex County, New Jersey, United States, 07028, 202



Room dimensions

Floor 1

Total sqft: 791 Living area: 644

#		Dimensions	sqft	Counted as living area
1	Primary Bedroom	15'3" x 20'1"	273 sq. ft	Yes
2	Hall	6'7" x 10'9"	85 sq. ft	Yes
3	Bath	8'3" x 8'4"	58 sq. ft	Yes
4	OFFICE/BONUS Room	15'3" x 13'4"	176 sq. ft	Yes
5	Electrical Room	7'8" x 3'0"	23 sq. ft	No
6	Patio	8'11" x 21'5"	124 sq. ft	No

25 Clark Street, Glen Ridge, Essex County, New Jersey, United States, 07028, 202



Room dimensions

Floor 2

Total sqft: 645 Living area: 645

#		Dimensions	sqft	Counted as living area
7	Living Room	15'3" x 13'8"	213 sq. ft	Yes
8	Bedroom	11'6" x 11'2"	109 sq. ft	Yes
9	Bath	8'4" x 7'2"	60 sq. ft	Yes
10	Laundry	3'2" x 3'7"	11 sq. ft	Yes
11	Foyer	3'5" x 11'6"	39 sq. ft	Yes
12	Kitchen	15'3" x 9'6"	143 sq. ft	Yes
13	Hall	6'6" x 7'3"	33 sq. ft	Yes

25 Clark Street, Glen Ridge, Essex County, New Jersey, United States, 07028, 202

1 Floor 1 - Primary Bedroom



Dimensions: 15'3" x 20'1"
Area: 273 sq. ft
Counted as living area: Yes

Heated: Yes
Finished: Yes
Enclosed: Yes
Contiguous: Yes
Permitted: Yes
Wet space: No
Addition: No
Conversion: No

2 Floor 1 - Hall



Dimensions: 6'7" x 10'9"
Area: 85 sq. ft
Counted as living area: Yes

Heated: Yes
Finished: Yes
Enclosed: Yes
Contiguous: Yes
Permitted: Yes
Wet space: No
Addition: No
Conversion: No

25 Clark Street, Glen Ridge, Essex County, New Jersey, United States, 07028, 202

3 Floor 1 - Bath



Dimensions: 8'3" x 8'4"
Area: 58 sq. ft
Counted as living area: Yes

Heated: Yes
Finished: Yes
Enclosed: Yes
Contiguous: Yes
Permitted: Yes
Wet space: Yes
Addition: No
Conversion: No

4 Floor 1 - OFFICE/BONUS Room



Dimensions: 15'3" x 13'4"
Area: 176 sq. ft
Counted as living area: Yes

Heated: Yes
Finished: Yes
Enclosed: Yes
Contiguous: Yes
Permitted: Yes
Wet space: No
Addition: No
Conversion: No

5 Floor 1 - Electrical Room



Dimensions: 7'8" x 3'0"
Area: 23 sq. ft
Counted as living area: No

Heated: No
Finished: No
Enclosed: Yes
Contiguous: Yes
Permitted: Yes
Wet space: No
Addition: No
Conversion: No

25 Clark Street, Glen Ridge, Essex County, New Jersey, United States, 07028, 202

6 Floor 1 - Patio



Dimensions: 8'11" x 21'5"
Area: 124 sq. ft
Counted as living area: No

Heated: No
Finished: Yes
Enclosed: No
Contiguous: Yes
Permitted: Yes
Wet space: No
Addition: No
Conversion: No

7 Floor 2 - Living Room



Dimensions: 15'3" x 13'8"
Area: 213 sq. ft
Counted as living area: Yes

Heated: Yes
Finished: Yes
Enclosed: Yes
Contiguous: Yes
Permitted: Yes
Wet space: No
Addition: No
Conversion: No

8 Floor 2 - Bedroom



Dimensions: 11'6" x 11'2"
Area: 109 sq. ft
Counted as living area: Yes

Heated: Yes
Finished: Yes
Enclosed: Yes
Contiguous: Yes
Permitted: Yes
Wet space: No
Addition: No
Conversion: No

25 Clark Street, Glen Ridge, Essex County, New Jersey, United States, 07028, 202

9 Floor 2 - Bath



Dimensions: 8'4" x 7'2"
Area: 60 sq. ft
Counted as living area: Yes

Heated: Yes
Finished: Yes
Enclosed: Yes
Contiguous: Yes
Permitted: Yes
Wet space: Yes
Addition: No
Conversion: No

10 Floor 2 - Laundry



Dimensions: 3'2" x 3'7"
Area: 11 sq. ft
Counted as living area: Yes

Heated: Yes
Finished: Yes
Enclosed: Yes
Contiguous: Yes
Permitted: Yes
Wet space: No
Addition: No
Conversion: No

11 Floor 2 - Foyer



Dimensions: 3'5" x 11'6"
Area: 39 sq. ft
Counted as living area: Yes

Heated: Yes
Finished: Yes
Enclosed: Yes
Contiguous: Yes
Permitted: Yes
Wet space: No
Addition: No
Conversion: No

25 Clark Street, Glen Ridge, Essex County, New Jersey, United States, 07028, 202

12 Floor 2 - Kitchen



Dimensions: 15'3" x 9'6"
Area: 143 sq. ft
Counted as living area: Yes

Heated: Yes
Finished: Yes
Enclosed: Yes
Contiguous: Yes
Permitted: Yes
Wet space: No
Addition: No
Conversion: No

13 Floor 2 - Hall



Dimensions: 6'6" x 7'3"
Area: 33 sq. ft
Counted as living area: Yes

Heated: Yes
Finished: Yes
Enclosed: Yes
Contiguous: Yes
Permitted: Yes
Wet space: No
Addition: No
Conversion: No