



Home report


44 Maple Avenue, Collinsville, Hartford County, Connecticut,
United States, 06019





Property summary


 **1** Garages


 **6** Bedrooms

 **2** Bathrooms

 **0** Half baths

 **3** Floors

 **2,962** Gross living area sqft

 **4,425** Total sqft

Home report

44 Maple Avenue, Collinsville, Hartford County, Connecticut,
United States, 06019



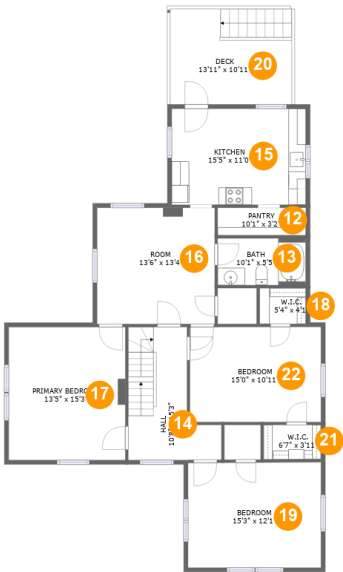
Room dimensions

Floor 1 Total sqft: 2029 Living area: 1412

#		Max Dimensions	sqft	Included
1	Living Room	15'3" x 19'5"	266 sq. ft	Yes
2	Carport	12'10" x 12'7"	162 sq. ft	No
3	Bath	8'8" x 5'5"	46 sq. ft	Yes
4	Bedroom	15'3" x 12'1"	178 sq. ft	Yes
5	Garage	18'6" x 11'8"	215 sq. ft	No
6	Foyer	6'6" x 17'10"	113 sq. ft	Yes
7	Family Room	17'7" x 15'3"	233 sq. ft	Yes
8	Dining Room	16'9" x 13'4"	212 sq. ft	Yes
9	Pantry	6'10" x 3'6"	24 sq. ft	Yes
10	Kitchen	15'5" x 11'1"	166 sq. ft	Yes
11	Patio	19'5" x 11'3"	209 sq. ft	No

Home report

44 Maple Avenue, Collinsville, Hartford County, Connecticut,
United States, 06019



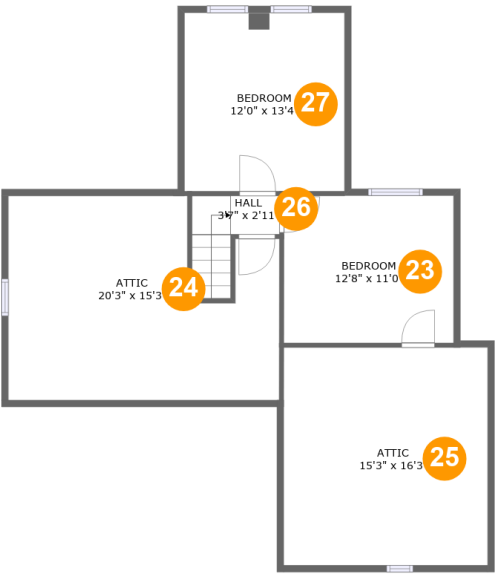
Room dimensions

Floor 2 Total sqft: 1449 Living area: 1326

#		Max Dimensions	sqft	Included
12	Pantry	10'1" x 3'2"	32 sq. ft	Yes
13	Bath	10'1" x 5'5"	54 sq. ft	Yes
14	Hall	10'8" x 15'3"	119 sq. ft	Yes
15	Kitchen	15'5" x 11'0"	169 sq. ft	Yes
16	Room	13'6" x 13'4"	180 sq. ft	Yes
17	Primary Bedroom	13'5" x 15'3"	204 sq. ft	Yes
18	W.I.C.	5'4" x 4'1"	22 sq. ft	Yes
19	Bedroom	15'3" x 12'1"	184 sq. ft	Yes
20	Deck	13'11" x 10'11"	123 sq. ft	No
21	W.I.C.	6'7" x 3'11"	26 sq. ft	Yes
22	Bedroom	15'0" x 10'11"	164 sq. ft	Yes

Home report

44 Maple Avenue, Collinsville, Hartford County, Connecticut,
United States, 06019



Room dimensions

Floor 3 Total sqft: 947 Living area: 224

#		Max Dimensions	sqft	Included
23	Bedroom	12'8" x 11'0"	140 sq. ft	No
24	Attic	20'3" x 15'3"	148 sq. ft	No
25	Attic	15'3" x 16'3"	139 sq. ft	No
26	Hall	3'7" x 2'11"	33 sq. ft	Yes
27	Bedroom	12'0" x 13'4"	160 sq. ft	Yes

44 Maple Avenue, Collinsville, Hartford County, Connecticut,
United States, 06019

1 Floor 1 - Living Room



Max Dimensions: 15'3" x 19'5"
Calculated Area: 266 sq. ft
Included: Yes

Heated: Yes
Finished: Yes
Enclosed: Yes
Contiguous: Yes
Permitted: Yes
Wet space: No
Addition: No
Conversion: No

2 Floor 1 - Carport



Max Dimensions: 12'10" x 12'7"
Calculated Area: 162 sq. ft
Included: No

Heated: No
Finished: Yes
Enclosed: No
Contiguous: Yes
Permitted: Yes
Wet space: No
Addition: No
Conversion: No

44 Maple Avenue, Collinsville, Hartford County, Connecticut,
United States, 06019

3 Floor 1 - Bath



Max Dimensions: 8'8" x 5'5"
Calculated Area: 46 sq. ft
Included: Yes

Heated: Yes
Finished: Yes
Enclosed: Yes
Contiguous: Yes
Permitted: Yes
Wet space: Yes
Addition: No
Conversion: No

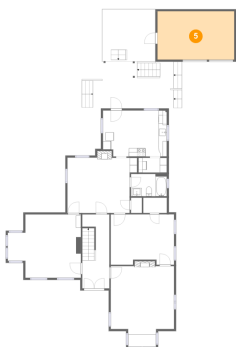
4 Floor 1 - Bedroom



Max Dimensions: 15'3" x 12'1"
Calculated Area: 178 sq. ft
Included: Yes

Heated: Yes
Finished: Yes
Enclosed: Yes
Contiguous: Yes
Permitted: Yes
Wet space: No
Addition: No
Conversion: No

5 Floor 1 - Garage



Max Dimensions: 18'6" x 11'8"
Calculated Area: 215 sq. ft
Included: No

Heated: No
Finished: No
Enclosed: Yes
Contiguous: Yes
Permitted: Yes
Wet space: No
Addition: No
Conversion: No

44 Maple Avenue, Collinsville, Hartford County, Connecticut,
United States, 06019

6 Floor 1 - Foyer



Max Dimensions: 6'6" x 17'10"
Calculated Area: 113 sq. ft
Included: Yes

Heated: Yes
Finished: Yes
Enclosed: Yes
Contiguous: Yes
Permitted: Yes
Wet space: No
Addition: No
Conversion: No

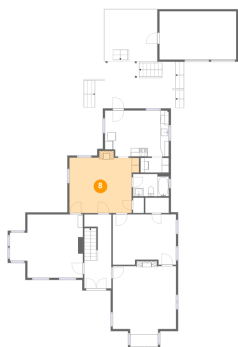
7 Floor 1 - Family Room



Max Dimensions: 17'7" x 15'3"
Calculated Area: 233 sq. ft
Included: Yes

Heated: Yes
Finished: Yes
Enclosed: Yes
Contiguous: Yes
Permitted: Yes
Wet space: No
Addition: No
Conversion: No

8 Floor 1 - Dining Room



Max Dimensions: 16'9" x 13'4"
Calculated Area: 212 sq. ft
Included: Yes

Heated: Yes
Finished: Yes
Enclosed: Yes
Contiguous: Yes
Permitted: Yes
Wet space: No
Addition: No
Conversion: No

44 Maple Avenue, Collinsville, Hartford County, Connecticut,
United States, 06019

9 Floor 1 - Pantry



Max Dimensions: 6'10" x 3'6"
Calculated Area: 24 sq. ft
Included: Yes

Heated: Yes
Finished: Yes
Enclosed: Yes
Contiguous: Yes
Permitted: Yes
Wet space: No
Addition: No
Conversion: No

10 Floor 1 - Kitchen



Max Dimensions: 15'5" x 11'1"
Calculated Area: 166 sq. ft
Included: Yes

Heated: Yes
Finished: Yes
Enclosed: Yes
Contiguous: Yes
Permitted: Yes
Wet space: No
Addition: No
Conversion: No

11 Floor 1 - Patio

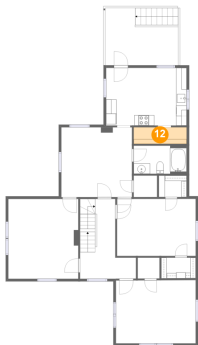


Max Dimensions: 19'5" x 11'3"
Calculated Area: 209 sq. ft
Included: No

Heated: No
Finished: Yes
Enclosed: No
Contiguous: Yes
Permitted: Yes
Wet space: No
Addition: No
Conversion: No

44 Maple Avenue, Collinsville, Hartford County, Connecticut,
United States, 06019

12 Floor 2 - Pantry



Max Dimensions: 10'1" x 3'2"
Calculated Area: 32 sq. ft
Included: Yes

Heated: Yes
Finished: Yes
Enclosed: Yes
Contiguous: Yes
Permitted: Yes
Wet space: No
Addition: No
Conversion: No

13 Floor 2 - Bath



Max Dimensions: 10'1" x 5'5"
Calculated Area: 54 sq. ft
Included: Yes

Heated: Yes
Finished: Yes
Enclosed: Yes
Contiguous: Yes
Permitted: Yes
Wet space: Yes
Addition: No
Conversion: No

14 Floor 2 - Hall

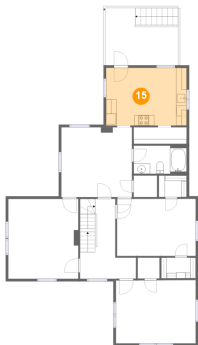


Max Dimensions: 10'8" x 15'3"
Calculated Area: 119 sq. ft
Included: Yes

Heated: Yes
Finished: Yes
Enclosed: Yes
Contiguous: Yes
Permitted: Yes
Wet space: No
Addition: No
Conversion: No

44 Maple Avenue, Collinsville, Hartford County, Connecticut,
United States, 06019

15 Floor 2 - Kitchen



Max Dimensions: 15'5" x 11'0"
Calculated Area: 169 sq. ft
Included: Yes

Heated: Yes
Finished: Yes
Enclosed: Yes
Contiguous: Yes
Permitted: Yes
Wet space: No
Addition: No
Conversion: No

16 Floor 2 - Room



Max Dimensions: 13'6" x 13'4"
Calculated Area: 180 sq. ft
Included: Yes

Heated: Yes
Finished: Yes
Enclosed: Yes
Contiguous: Yes
Permitted: Yes
Wet space: No
Addition: No
Conversion: No

17 Floor 2 - Primary Bedroom



Max Dimensions: 13'5" x 15'3"
Calculated Area: 204 sq. ft
Included: Yes

Heated: Yes
Finished: Yes
Enclosed: Yes
Contiguous: Yes
Permitted: Yes
Wet space: No
Addition: No
Conversion: No

44 Maple Avenue, Collinsville, Hartford County, Connecticut,
United States, 06019

18 Floor 2 - W.I.C.



Max Dimensions: 5'4" x 4'1"
Calculated Area: 22 sq. ft
Included: Yes

Heated: Yes
Finished: Yes
Enclosed: Yes
Contiguous: Yes
Permitted: Yes
Wet space: No
Addition: No
Conversion: No

19 Floor 2 - Bedroom



Max Dimensions: 15'3" x 12'1"
Calculated Area: 184 sq. ft
Included: Yes

Heated: Yes
Finished: Yes
Enclosed: Yes
Contiguous: Yes
Permitted: Yes
Wet space: No
Addition: No
Conversion: No

20 Floor 2 - Deck



Max Dimensions: 13'11" x 10'11"
Calculated Area: 123 sq. ft
Included: No

Heated: No
Finished: Yes
Enclosed: No
Contiguous: Yes
Permitted: Yes
Wet space: No
Addition: No
Conversion: No

44 Maple Avenue, Collinsville, Hartford County, Connecticut,
United States, 06019

21 Floor 2 - W.I.C.



Max Dimensions: 6'7" x 3'11"
Calculated Area: 26 sq. ft
Included: Yes

Heated: Yes
Finished: Yes
Enclosed: Yes
Contiguous: Yes
Permitted: Yes
Wet space: No
Addition: No
Conversion: No

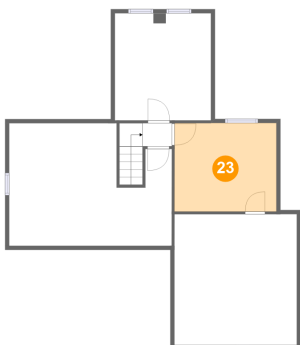
22 Floor 2 - Bedroom



Max Dimensions: 15'0" x 10'11"
Calculated Area: 164 sq. ft
Included: Yes

Heated: Yes
Finished: Yes
Enclosed: Yes
Contiguous: Yes
Permitted: Yes
Wet space: No
Addition: No
Conversion: No

23 Floor 3 - Bedroom

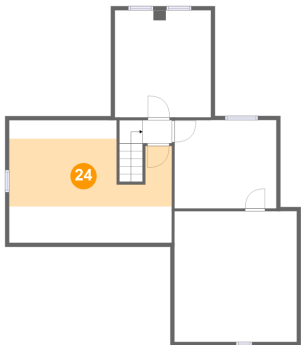


Max Dimensions: 12'8" x 11'0"
Calculated Area: 140 sq. ft
Included: No

Heated: Yes
Finished: Yes
Enclosed: Yes
Contiguous: No
Permitted: Yes
Wet space: No
Addition: No
Conversion: No

44 Maple Avenue, Collinsville, Hartford County, Connecticut,
United States, 06019

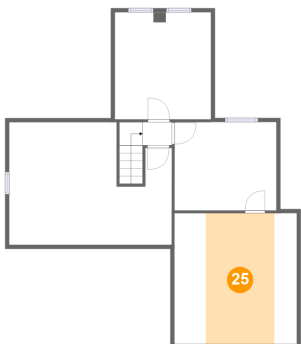
24 Floor 3 - Attic



Max Dimensions: 20'3" x 15'3"
Calculated Area: 148 sq. ft
Included: No

Heated: No
Finished: No
Enclosed: Yes
Contiguous: Yes
Permitted: Yes
Wet space: No
Addition: No
Conversion: No

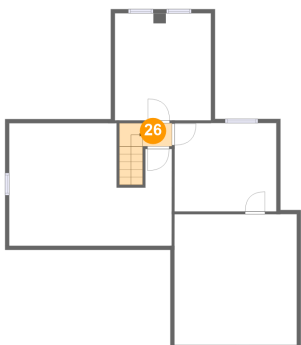
25 Floor 3 - Attic



Max Dimensions: 15'3" x 16'3"
Calculated Area: 139 sq. ft
Included: No

Heated: No
Finished: No
Enclosed: Yes
Contiguous: Yes
Permitted: Yes
Wet space: No
Addition: No
Conversion: No

26 Floor 3 - Hall

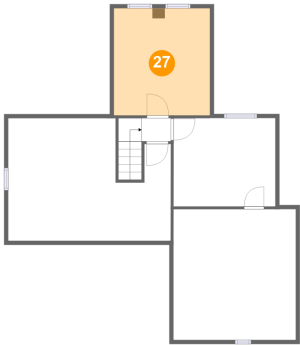


Max Dimensions: 3'7" x 2'11"
Calculated Area: 33 sq. ft
Included: Yes

Heated: Yes
Finished: Yes
Enclosed: Yes
Contiguous: Yes
Permitted: Yes
Wet space: No
Addition: No
Conversion: No

44 Maple Avenue, Collinsville, Hartford County, Connecticut,
United States, 06019

27 Floor 3 - Bedroom



Max Dimensions: 12'0" x 13'4"
Calculated Area: 160 sq. ft
Included: Yes

Heated: Yes
Finished: Yes
Enclosed: Yes
Contiguous: Yes
Permitted: Yes
Wet space: No
Addition: No
Conversion: No