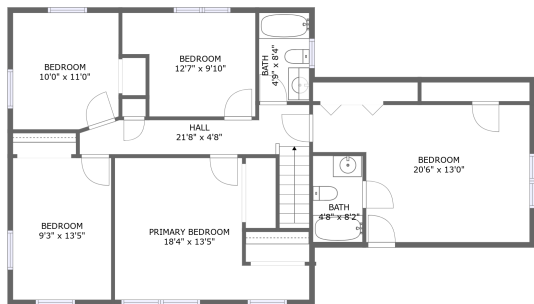
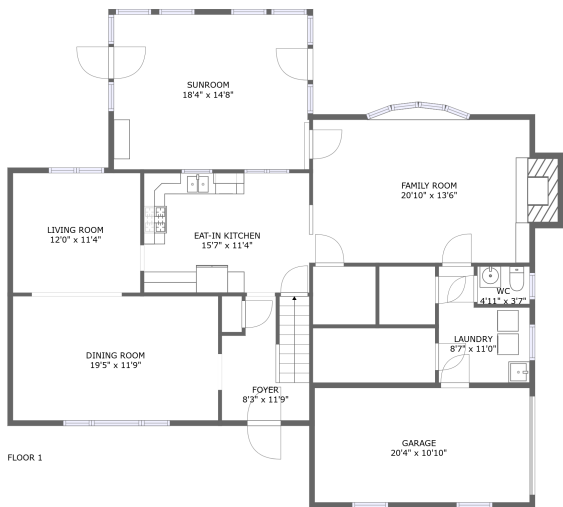


661 Serrill Dr,Hatboro,PA,US




FLOOR 2



FLOOR 1

Property summary


 **1** Garages

 **5** Bedrooms

 **2** Bathrooms

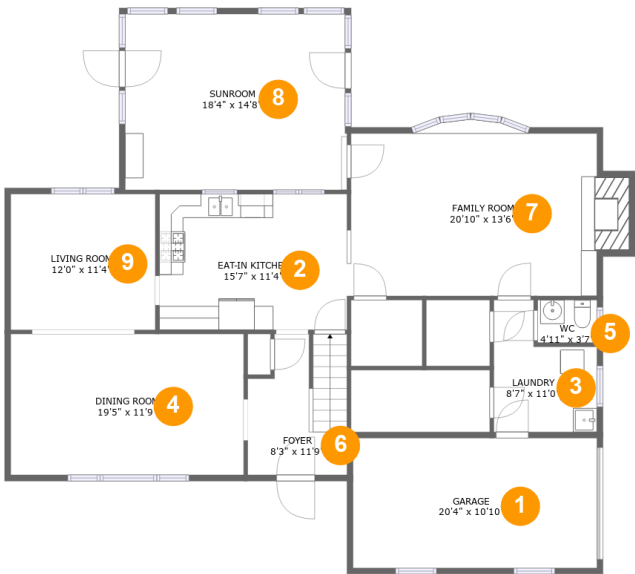
 **1** Half baths

 **2** Floors

 **2,691**
Gross living
area sqft

 **2,949**
Total sqft

661 Serrill Dr,Hatboro,PA,US

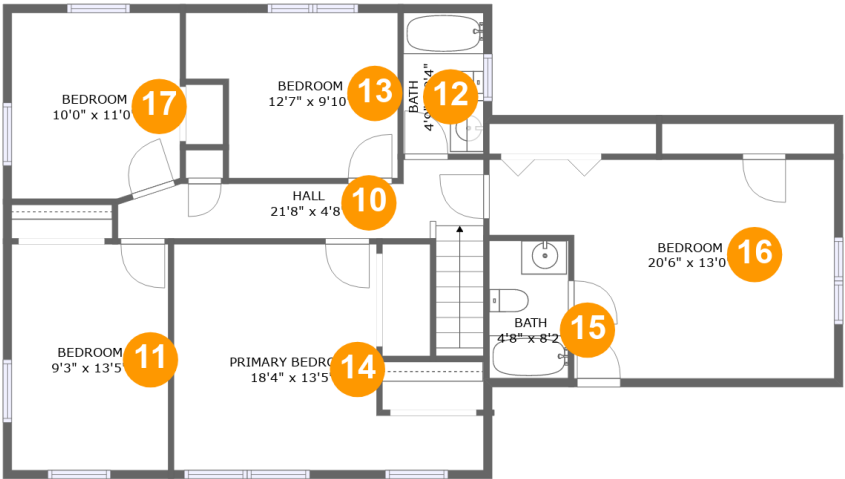


Room dimensions

Floor 1 Total sqft: 1799 Living area: 1541

#		Dimensions	sqft	Counted as living area
1	Garage	20'4" x 10'10"	220 sq. ft	No
2	Eat-in Kitchen	15'7" x 11'4"	177 sq. ft	Yes
3	Laundry	8'7" x 11'0"	74 sq. ft	Yes
4	Dining Room	19'5" x 11'9"	228 sq. ft	Yes
5	WC	4'11" x 3'7"	18 sq. ft	Yes
6	Foyer	8'3" x 11'9"	87 sq. ft	Yes
7	Family Room	20'10" x 13'6"	302 sq. ft	Yes
8	Sunroom	18'4" x 14'8"	269 sq. ft	Yes
9	Living Room	12'0" x 11'4"	136 sq. ft	Yes

661 Serrill Dr,Hatboro,PA,US



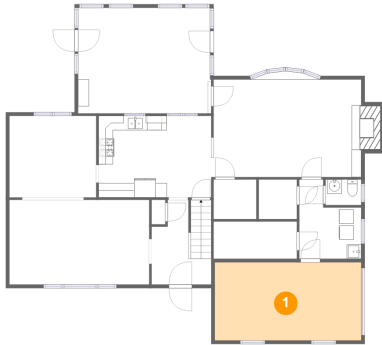
Room dimensions

Floor 2 Total sqft: 1150 Living area: 1150

#		Dimensions	sqft	Counted as living area
10	Hall	21'8" x 4'8"	95 sq. ft	Yes
11	Bedroom	9'3" x 13'5"	125 sq. ft	Yes
12	Bath	4'9" x 8'4"	40 sq. ft	Yes
13	Bedroom	12'7" x 9'10"	108 sq. ft	Yes
14	Primary Bedroom	18'4" x 13'5"	182 sq. ft	Yes
15	Bath	4'8" x 8'2"	38 sq. ft	Yes
16	Bedroom	20'6" x 13'0"	223 sq. ft	Yes
17	Bedroom	10'0" x 11'0"	108 sq. ft	Yes

661 Serrill Dr, Hatboro, PA, US

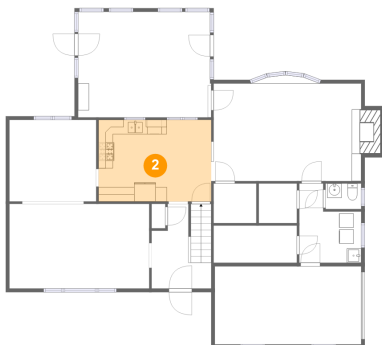
1 Floor 1 - Garage



Dimensions: 20'4" x 10'10"
Area: 220 sq. ft
Counted as living area: No

Heated: No
Finished: No
Enclosed: Yes
Contiguous: Yes
Permitted: Yes
Wet space: No
Addition: No
Conversion: No

2 Floor 1 - Eat-in Kitchen



Dimensions: 15'7" x 11'4"
Area: 177 sq. ft
Counted as living area: Yes

Heated: Yes
Finished: Yes
Enclosed: Yes
Contiguous: Yes
Permitted: Yes
Wet space: No
Addition: No
Conversion: No

661 Serrill Dr,Hatboro,PA,US

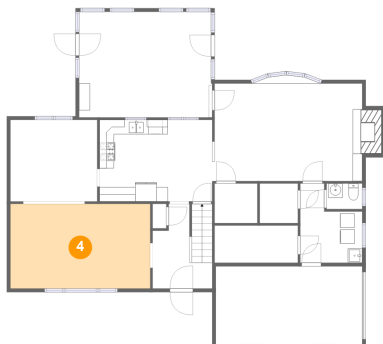
3 Floor 1 - Laundry



Dimensions: 8'7" x 11'0"
Area: 74 sq. ft
Counted as living area: Yes

Heated: Yes
Finished: Yes
Enclosed: Yes
Contiguous: Yes
Permitted: Yes
Wet space: No
Addition: No
Conversion: No

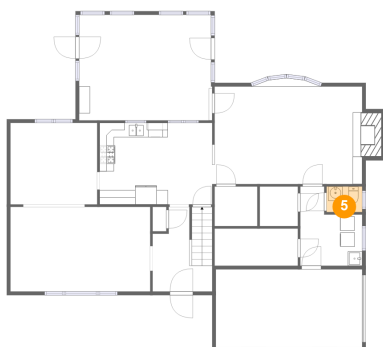
4 Floor 1 - Dining Room



Dimensions: 19'5" x 11'9"
Area: 228 sq. ft
Counted as living area: Yes

Heated: Yes
Finished: Yes
Enclosed: Yes
Contiguous: Yes
Permitted: Yes
Wet space: No
Addition: No
Conversion: No

5 Floor 1 - WC



Dimensions: 4'11" x 3'7"
Area: 18 sq. ft
Counted as living area: Yes

Heated: Yes
Finished: Yes
Enclosed: Yes
Contiguous: Yes
Permitted: Yes
Wet space: Yes
Addition: No
Conversion: No

661 Serrill Dr, Hatboro, PA, US

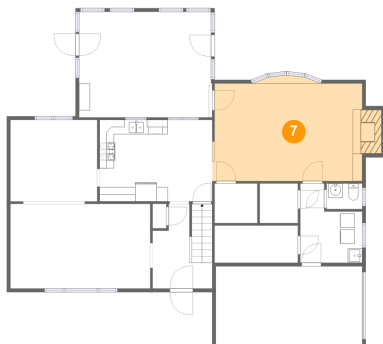
6 Floor 1 - Foyer



Dimensions: 8'3" x 11'9"
Area: 87 sq. ft
Counted as living area: Yes

Heated: Yes
Finished: Yes
Enclosed: Yes
Contiguous: Yes
Permitted: Yes
Wet space: No
Addition: No
Conversion: No

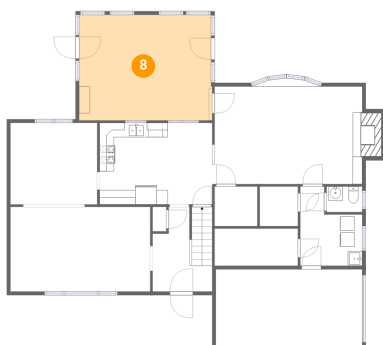
7 Floor 1 - Family Room



Dimensions: 20'10" x 13'6"
Area: 302 sq. ft
Counted as living area: Yes

Heated: Yes
Finished: Yes
Enclosed: Yes
Contiguous: Yes
Permitted: Yes
Wet space: No
Addition: No
Conversion: No

8 Floor 1 - Sunroom



Dimensions: 18'4" x 14'8"
Area: 269 sq. ft
Counted as living area: Yes

Heated: Yes
Finished: Yes
Enclosed: Yes
Contiguous: Yes
Permitted: Yes
Wet space: No
Addition: No
Conversion: No

661 Serrill Dr,Hatboro,PA,US

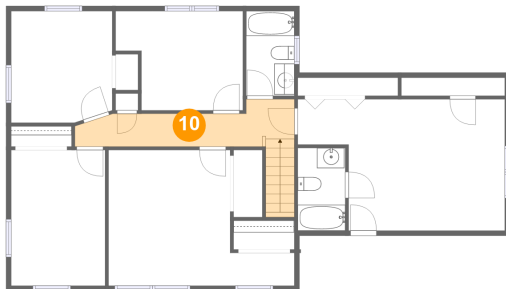
9 Floor 1 - Living Room



Dimensions: 12'0" x 11'4"
Area: 136 sq. ft
Counted as living area: Yes

Heated: Yes
Finished: Yes
Enclosed: Yes
Contiguous: Yes
Permitted: Yes
Wet space: No
Addition: No
Conversion: No

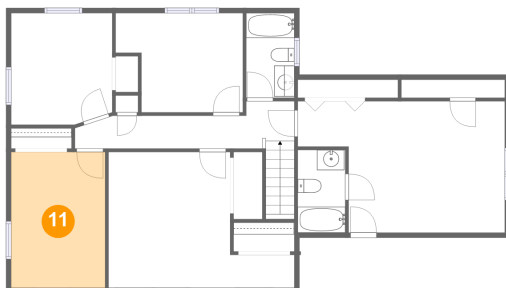
10 Floor 2 - Hall



Dimensions: 21'8" x 4'8"
Area: 95 sq. ft
Counted as living area: Yes

Heated: Yes
Finished: Yes
Enclosed: Yes
Contiguous: Yes
Permitted: Yes
Wet space: No
Addition: No
Conversion: No

11 Floor 2 - Bedroom

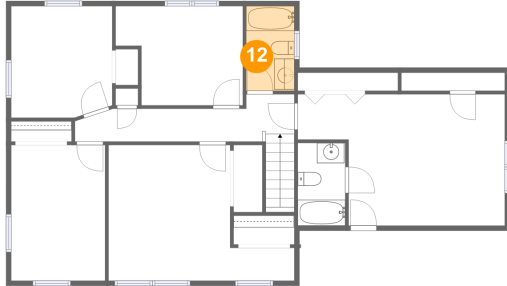


Dimensions: 9'3" x 13'5"
Area: 125 sq. ft
Counted as living area: Yes

Heated: Yes
Finished: Yes
Enclosed: Yes
Contiguous: Yes
Permitted: Yes
Wet space: No
Addition: No
Conversion: No

661 Serrill Dr, Hatboro, PA, US

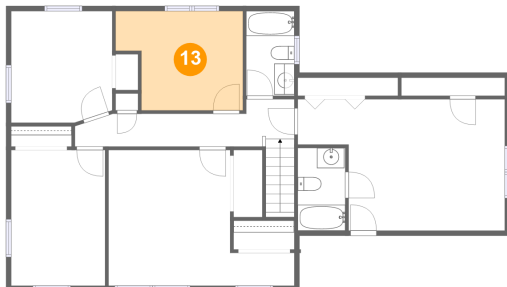
12 Floor 2 - Bath



Dimensions: 4'9" x 8'4"
Area: 40 sq. ft
Counted as living area: Yes

Heated: Yes
Finished: Yes
Enclosed: Yes
Contiguous: Yes
Permitted: Yes
Wet space: Yes
Addition: No
Conversion: No

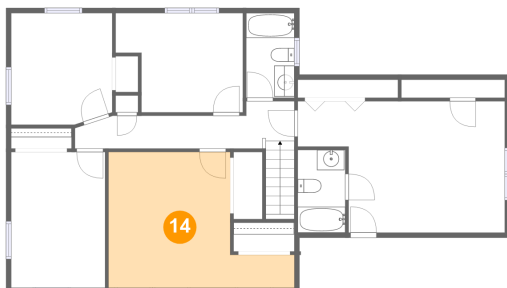
13 Floor 2 - Bedroom



Dimensions: 12'7" x 9'10"
Area: 108 sq. ft
Counted as living area: Yes

Heated: Yes
Finished: Yes
Enclosed: Yes
Contiguous: Yes
Permitted: Yes
Wet space: No
Addition: No
Conversion: No

14 Floor 2 - Primary Bedroom

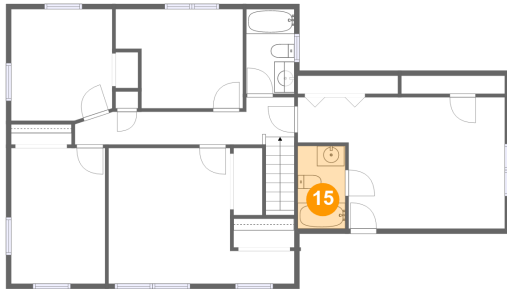


Dimensions: 18'4" x 13'5"
Area: 182 sq. ft
Counted as living area: Yes

Heated: Yes
Finished: Yes
Enclosed: Yes
Contiguous: Yes
Permitted: Yes
Wet space: No
Addition: No
Conversion: No

661 Serrill Dr,Hatboro,PA,US

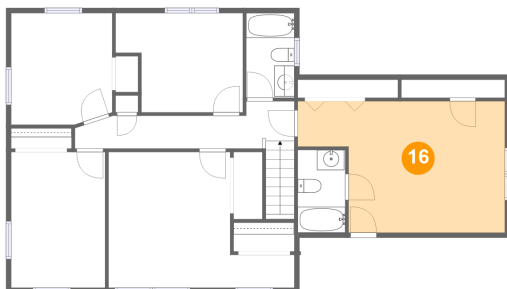
15 Floor 2 - Bath



Dimensions: 4'8" x 8'2"
Area: 38 sq. ft
Counted as living area: Yes

Heated: Yes
Finished: Yes
Enclosed: Yes
Contiguous: Yes
Permitted: Yes
Wet space: Yes
Addition: No
Conversion: No

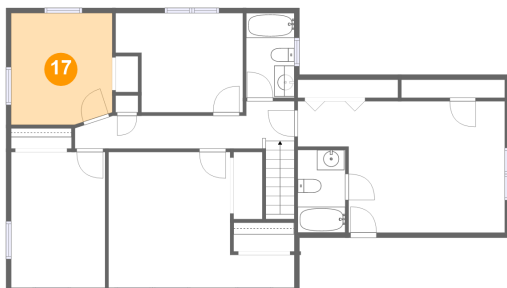
16 Floor 2 - Bedroom



Dimensions: 20'6" x 13'0"
Area: 223 sq. ft
Counted as living area: Yes

Heated: Yes
Finished: Yes
Enclosed: Yes
Contiguous: Yes
Permitted: Yes
Wet space: No
Addition: No
Conversion: No

17 Floor 2 - Bedroom



Dimensions: 10'0" x 11'0"
Area: 108 sq. ft
Counted as living area: Yes

Heated: Yes
Finished: Yes
Enclosed: Yes
Contiguous: Yes
Permitted: Yes
Wet space: No
Addition: No
Conversion: No