

Home report

158 Phoebe Lane, Berkeley Springs, Morgan County, West Virginia, United States, 25411



Total Area: 2216 sq. ft

Floor 1: 1010 sq. ft, Floor 2: 1206 sq. ft

Excluded: Deck 170 sq. ft, Walls: 154 sq. ft

Property summary

 **2** Floors

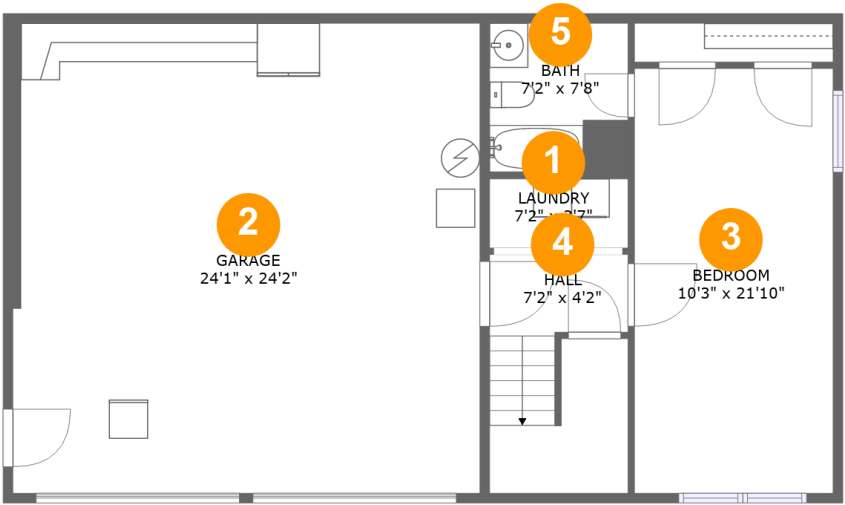
 **4** Bedrooms

 **3** Bathrooms

 **1** Garages

Home report

158 Phoebe Lane, Berkeley Springs, Morgan County, West Virginia, United States, 25411



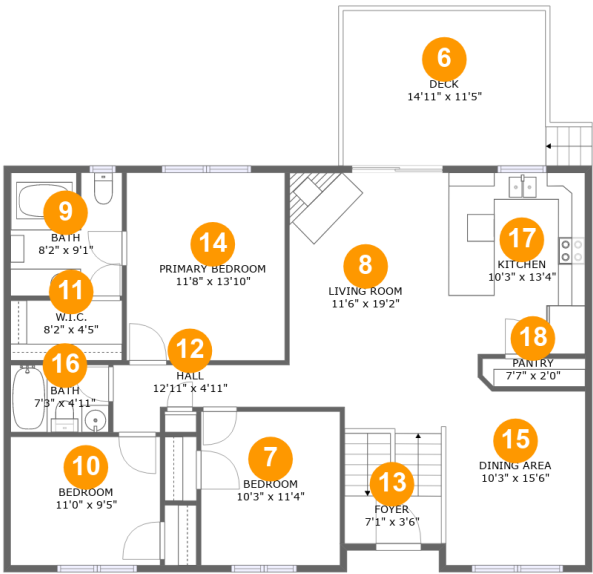
Room dimensions

Floor 1 Total:1010sqft Excluded: 0sqft

#		Max Dimensions	sqft	Included
1	Laundry	7'2" x 3'7"	25 sq. ft	Yes
2	Garage	24'1" x 24'2"	582 sq. ft	Yes
3	Bedroom	10'3" x 21'10"	224 sq. ft	Yes
4	Hall	7'2" x 4'2"	85 sq. ft	Yes
5	Bath	7'2" x 7'8"	49 sq. ft	Yes

Home report

158 Phoebe Lane, Berkeley Springs, Morgan County, West Virginia, United States, 25411



Room dimensions

Floor 2 Total:1206sqft Excluded: 170sqft

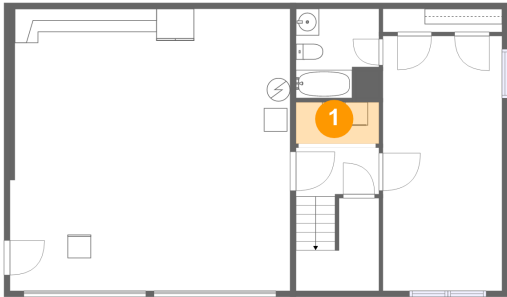
#		Max Dimensions	sqft	Included
6	Deck	14'11" x 11'5"	170 sq. ft	No
7	Bedroom	10'3" x 11'4"	115 sq. ft	Yes
8	Living Room	11'6" x 19'2"	247 sq. ft	Yes
9	Bath	8'2" x 9'1"	73 sq. ft	Yes
10	Bedroom	11'0" x 9'5"	104 sq. ft	Yes
11	W.I.C.	8'2" x 4'5"	36 sq. ft	Yes
12	Hall	12'11" x 4'11"	46 sq. ft	Yes
13	Foyer	7'1" x 3'6"	26 sq. ft	Yes
14	Primary Bedroom	11'8" x 13'10"	160 sq. ft	Yes
15	Dining Area	10'3" x 15'6"	138 sq. ft	Yes
16	Bath	7'3" x 4'11"	36 sq. ft	Yes

Home report

158 Phoebe Lane, Berkeley Springs, Morgan County, West Virginia, United States, 25411

#		Max Dimensions	sqft	Included
17	Kitchen	10'3" x 13'4"	137 sq. ft	Yes
18	Pantry	7'7" x 2'0"	15 sq. ft	Yes

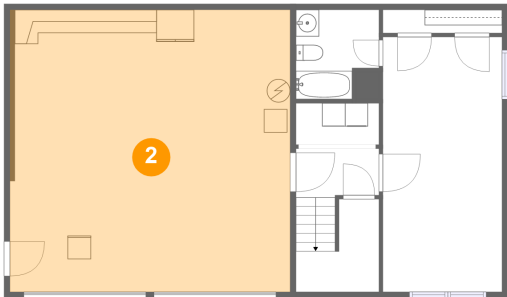
1 Floor 1 - Laundry



Max Dimensions: 7'2" x 3'7"
Calculated Area: 25 sq. ft
Included: Yes

Heated: Yes
Finished: Yes
Enclosed: Yes
Contiguous: Yes
Permitted: Yes
Wet space: No
Addition: No
Conversion: No

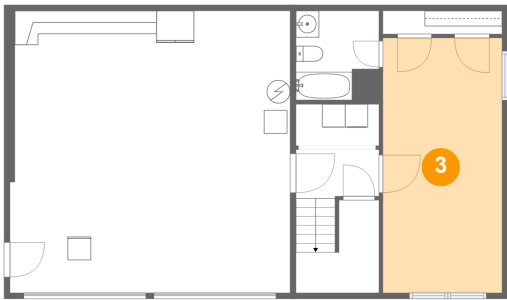
2 Floor 1 - Garage



Max Dimensions: 24'1" x 24'2"
Calculated Area: 582 sq. ft
Included: No

Heated: No
Finished: Yes
Enclosed: Yes
Contiguous: Yes
Permitted: Yes
Wet space: No
Addition: No
Conversion: No

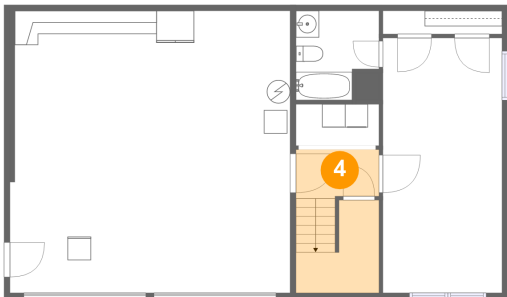
3 Floor 1 - Bedroom



Max Dimensions: 10'3" x 21'10"
Calculated Area: 224 sq. ft
Included: Yes

Heated: Yes
Finished: Yes
Enclosed: Yes
Contiguous: Yes
Permitted: Yes
Wet space: No
Addition: No
Conversion: No

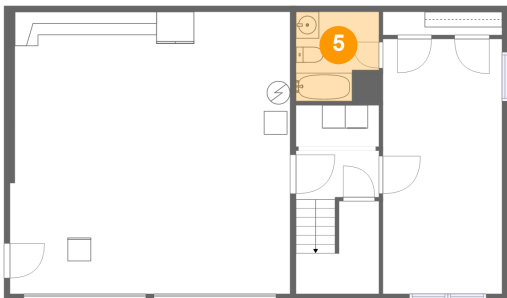
4 Floor 1 - Hall



Max Dimensions: 7'2" x 4'2"
Calculated Area: 85 sq. ft
Included: Yes

Heated: Yes
Finished: Yes
Enclosed: Yes
Contiguous: Yes
Permitted: Yes
Wet space: No
Addition: No
Conversion: No

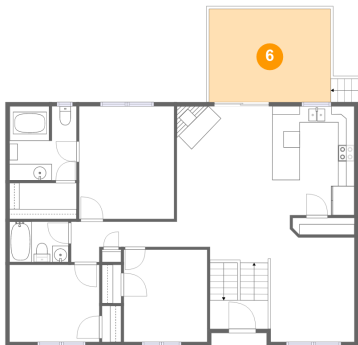
5 Floor 1 - Bath



Max Dimensions: 7'2" x 7'8"
Calculated Area: 49 sq. ft
Included: Yes

Heated: Yes
Finished: Yes
Enclosed: Yes
Contiguous: Yes
Permitted: Yes
Wet space: Yes
Addition: No
Conversion: No

6 Floor 2 - Deck



Max Dimensions: 14'11" x 11'5"
Calculated Area: 170 sq. ft
Included: No

Heated: No
Finished: Yes
Enclosed: No
Contiguous: Yes
Permitted: Yes
Wet space: No
Addition: No
Conversion: No

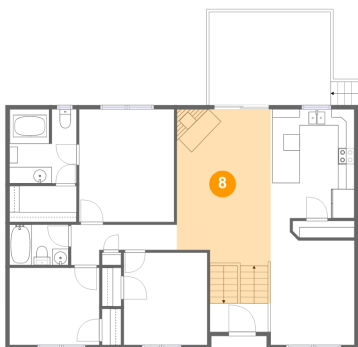
7 Floor 2 - Bedroom



Max Dimensions: 10'3" x 11'4"
Calculated Area: 115 sq. ft
Included: Yes

Heated: Yes
Finished: Yes
Enclosed: Yes
Contiguous: Yes
Permitted: Yes
Wet space: No
Addition: No
Conversion: No

8 Floor 2 - Living Room



Max Dimensions: 11'6" x 19'2"
Calculated Area: 247 sq. ft
Included: Yes

Heated: Yes
Finished: Yes
Enclosed: Yes
Contiguous: Yes
Permitted: Yes
Wet space: No
Addition: No
Conversion: No

158 Phoebe Lane, Berkeley Springs, Morgan County, West Virginia, United States, 25411

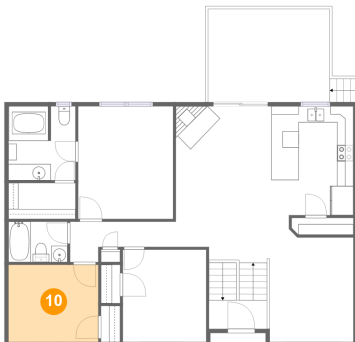
9 Floor 2 - Bath



Max Dimensions: 8'2" x 9'1"
Calculated Area: 73 sq. ft
Included: Yes

Heated: Yes
Finished: Yes
Enclosed: Yes
Contiguous: Yes
Permitted: Yes
Wet space: Yes
Addition: No
Conversion: No

10 Floor 2 - Bedroom



Max Dimensions: 11'0" x 9'5"
Calculated Area: 104 sq. ft
Included: Yes

Heated: Yes
Finished: Yes
Enclosed: Yes
Contiguous: Yes
Permitted: Yes
Wet space: No
Addition: No
Conversion: No

11 Floor 2 - W.I.C.



Max Dimensions: 8'2" x 4'5"
Calculated Area: 36 sq. ft
Included: Yes

Heated: Yes
Finished: Yes
Enclosed: Yes
Contiguous: Yes
Permitted: Yes
Wet space: No
Addition: No
Conversion: No

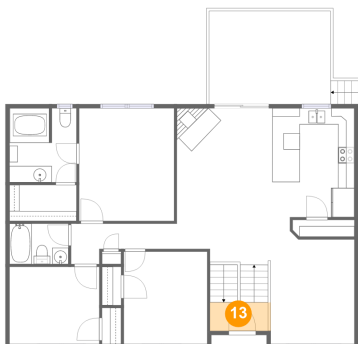
12 Floor 2 - Hall



Max Dimensions: 12'11" x 4'11"
Calculated Area: 46 sq. ft
Included: Yes

Heated: Yes
Finished: Yes
Enclosed: Yes
Contiguous: Yes
Permitted: Yes
Wet space: No
Addition: No
Conversion: No

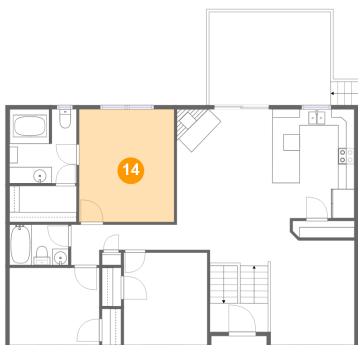
13 Floor 2 - Foyer



Max Dimensions: 7'1" x 3'6"
Calculated Area: 26 sq. ft
Included: Yes

Heated: Yes
Finished: Yes
Enclosed: Yes
Contiguous: Yes
Permitted: Yes
Wet space: No
Addition: No
Conversion: No

14 Floor 2 - Primary Bedroom



Max Dimensions: 11'8" x 13'10"
Calculated Area: 160 sq. ft
Included: Yes

Heated: Yes
Finished: Yes
Enclosed: Yes
Contiguous: Yes
Permitted: Yes
Wet space: No
Addition: No
Conversion: No

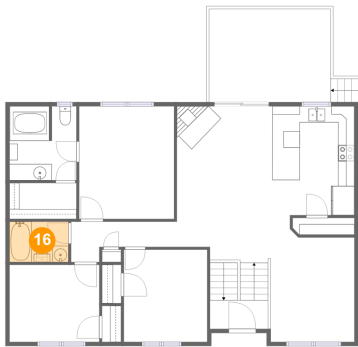
15 Floor 2 - Dining Area



Max Dimensions: 10'3" x 15'6"
Calculated Area: 138 sq. ft
Included: Yes

Heated: Yes
Finished: Yes
Enclosed: Yes
Contiguous: Yes
Permitted: Yes
Wet space: No
Addition: No
Conversion: No

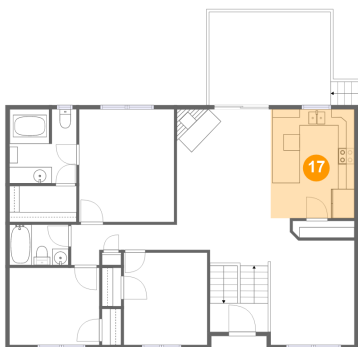
16 Floor 2 - Bath



Max Dimensions: 7'3" x 4'11"
Calculated Area: 36 sq. ft
Included: Yes

Heated: Yes
Finished: Yes
Enclosed: Yes
Contiguous: Yes
Permitted: Yes
Wet space: Yes
Addition: No
Conversion: No

17 Floor 2 - Kitchen

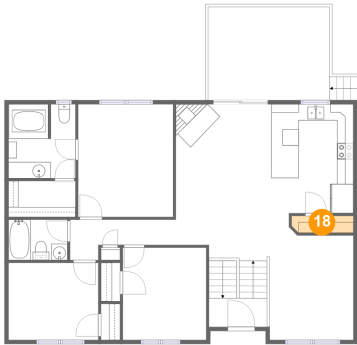


Max Dimensions: 10'3" x 13'4"
Calculated Area: 137 sq. ft
Included: Yes

Heated: Yes
Finished: Yes
Enclosed: Yes
Contiguous: Yes
Permitted: Yes
Wet space: No
Addition: No
Conversion: No

158 Phoebe Lane, Berkeley Springs, Morgan County, West Virginia, United States, 25411

18 Floor 2 - Pantry



Max Dimensions: 7'7" x 2'0"
Calculated Area: 15 sq. ft
Included: Yes

Heated: Yes
Finished: Yes
Enclosed: Yes
Contiguous: Yes
Permitted: Yes
Wet space: No
Addition: No
Conversion: No