

Home data report

5829 Coyote Ridge Road, Reno, Washoe County, Nevada, United States, 89523



Total Area: 1222 sq. ft

1st Floor: 633 sq. ft, 2nd Floor: 589 sq. ft

Excluded: Garage 431 sq. ft, Embedded window 3 sq. ft, Fireplace 11 sq. ft, Open to below 273 sq. ft, Walls: 151 sq. ft

Property summary



Home data report

5829 Coyote Ridge Road, Reno, Washoe County, Nevada, United States, 89523



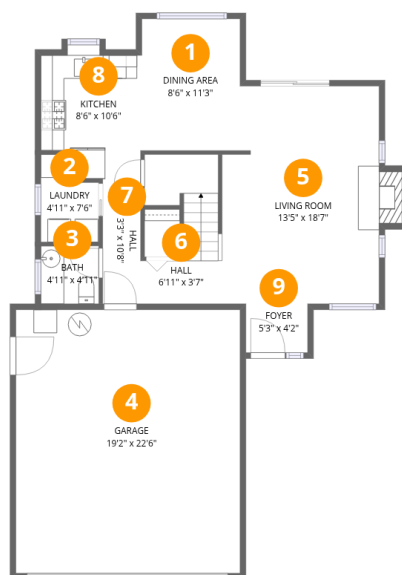
1
Half baths



1
Garages

Home data report

5829 Coyote Ridge Road, Reno, Washoe County, Nevada, United States, 89523



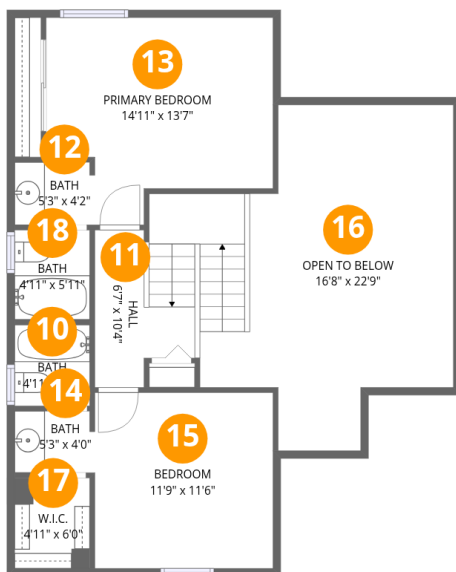
Room dimensions

Floor 1

Total:633sqft Excluded: 445sqft

#		Dimensions	sqft	Counted as living area
1	Dining Area	8'6" x 11'3"	95 sq. ft	Yes
2	Laundry	4'11" x 7'6"	37 sq. ft	Yes
3	Bath	4'11" x 4'11"	24 sq. ft	Yes
4	Garage	19'2" x 22'6"	431 sq. ft	No
5	Living Room	13'5" x 18'7"	250 sq. ft	Yes
6	Hall	6'11" x 3'7"	25 sq. ft	Yes
7	Hall	3'3" x 10'8"	35 sq. ft	Yes
8	Kitchen	8'6" x 10'6"	90 sq. ft	Yes
9	Foyer	5'3" x 4'2"	22 sq. ft	Yes

5829 Coyote Ridge Road, Reno, Washoe County, Nevada, United States, 89523



Room dimensions

Floor 2

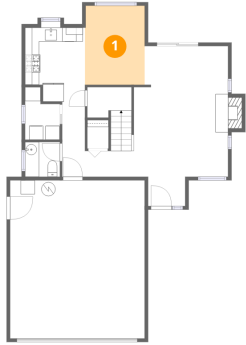
Total:589sqft

Excluded: 273sqft

#		Dimensions	sqft	Counted as living area
10	Bath	4'11" x 5'4"	26 sq. ft	Yes
11	Hall	6'7" x 10'4"	68 sq. ft	Yes
12	Bath	5'3" x 4'2"	22 sq. ft	Yes
13	Primary Bedroom	14'11" x 13'7"	203 sq. ft	Yes
14	Bath	5'3" x 4'0"	21 sq. ft	Yes
15	Bedroom	11'9" x 11'6"	135 sq. ft	Yes
16	Open To Below	16'8" x 22'9"	379 sq. ft	No
17	W.I.C.	4'11" x 6'0"	29 sq. ft	Yes
18	Bath	4'11" x 5'11"	29 sq. ft	Yes

5829 Coyote Ridge Road, Reno, Washoe County, Nevada, United States, 89523

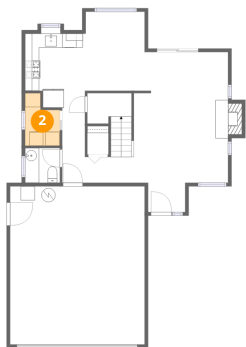
1 Floor 1 - Dining Area



Dimensions: 8'6" x 11'3"
Area: 95 sq. ft
Counted as living area: Yes

Heated: Yes
Finished: Yes
Enclosed: Yes
Contiguous: Yes
Permitted: Yes
Wet space: No
Addition: No
Conversion: No

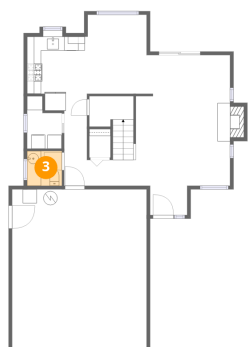
2 Floor 1 - Laundry



Dimensions: 4'11" x 7'6"
Area: 37 sq. ft
Counted as living area: Yes

Heated: Yes
Finished: Yes
Enclosed: Yes
Contiguous: Yes
Permitted: Yes
Wet space: No
Addition: No
Conversion: No

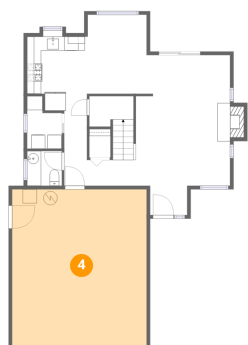
3 Floor 1 - Bath



Dimensions: 4'11" x 4'11"
Area: 24 sq. ft
Counted as living area: Yes

Heated: Yes
Finished: Yes
Enclosed: Yes
Contiguous: Yes
Permitted: Yes
Wet space: Yes
Addition: No
Conversion: No

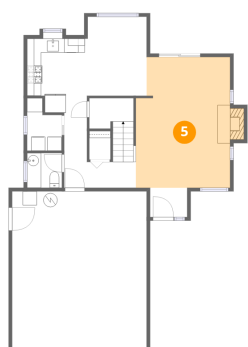
4 Floor 1 - Garage



Dimensions: 19'2" x 22'6"
Area: 431 sq. ft
Counted as living area: No

Heated: No
Finished: No
Enclosed: Yes
Contiguous: Yes
Permitted: Yes
Wet space: No
Addition: No
Conversion: No

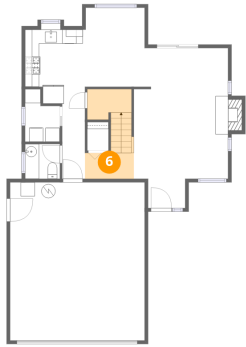
5 Floor 1 - Living Room



Dimensions: 13'5" x 18'7"
Area: 250 sq. ft
Counted as living area: Yes

Heated: Yes
Finished: Yes
Enclosed: Yes
Contiguous: Yes
Permitted: Yes
Wet space: No
Addition: No
Conversion: No

6 Floor 1 - Hall



Dimensions: 6'11" x 3'7"
Area: 25 sq. ft
Counted as living area: Yes

Heated: Yes
Finished: Yes
Enclosed: Yes
Contiguous: Yes
Permitted: Yes
Wet space: No
Addition: No
Conversion: No

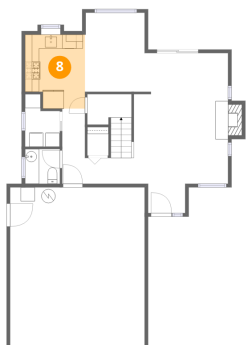
7 Floor 1 - Hall



Dimensions: 3'3" x 10'8"
Area: 35 sq. ft
Counted as living area: Yes

Heated: Yes
Finished: Yes
Enclosed: Yes
Contiguous: Yes
Permitted: Yes
Wet space: No
Addition: No
Conversion: No

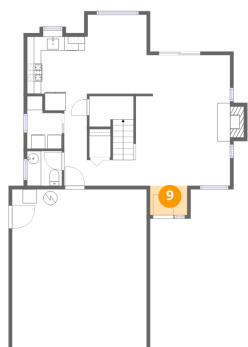
8 Floor 1 - Kitchen



Dimensions: 8'6" x 10'6"
Area: 90 sq. ft
Counted as living area: Yes

Heated: Yes
Finished: Yes
Enclosed: Yes
Contiguous: Yes
Permitted: Yes
Wet space: No
Addition: No
Conversion: No

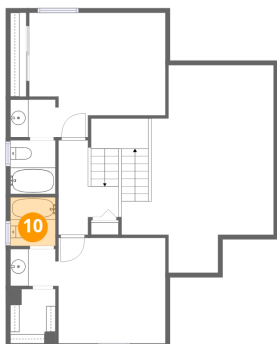
9 Floor 1 - Foyer



Dimensions: 5'3" x 4'2"
Area: 22 sq. ft
Counted as living area: Yes

Heated: Yes
Finished: Yes
Enclosed: Yes
Contiguous: Yes
Permitted: Yes
Wet space: No
Addition: No
Conversion: No

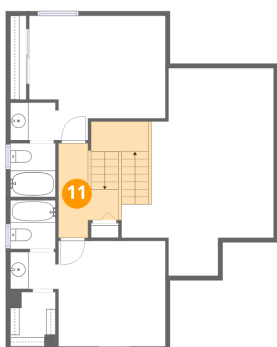
10 Floor 2 - Bath



Dimensions: 4'11" x 5'4"
Area: 26 sq. ft
Counted as living area: Yes

Heated: Yes
Finished: Yes
Enclosed: Yes
Contiguous: Yes
Permitted: Yes
Wet space: Yes
Addition: No
Conversion: No

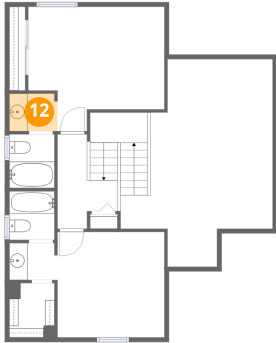
11 Floor 2 - Hall



Dimensions: 6'7" x 10'4"
Area: 68 sq. ft
Counted as living area: Yes

Heated: Yes
Finished: Yes
Enclosed: Yes
Contiguous: Yes
Permitted: Yes
Wet space: No
Addition: No
Conversion: No

12 Floor 2 - Bath



Dimensions: 5'3" x 4'2"
Area: 22 sq. ft
Counted as living area: Yes

Heated: Yes
Finished: Yes
Enclosed: Yes
Contiguous: Yes
Permitted: Yes
Wet space: Yes
Addition: No
Conversion: No

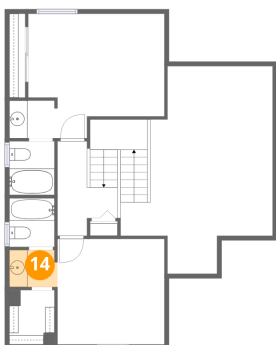
13 Floor 2 - Primary Bedroom



Dimensions: 14'11" x 13'7"
Area: 203 sq. ft
Counted as living area: Yes

Heated: Yes
Finished: Yes
Enclosed: Yes
Contiguous: Yes
Permitted: Yes
Wet space: No
Addition: No
Conversion: No

14 Floor 2 - Bath



Dimensions: 5'3" x 4'0"
Area: 21 sq. ft
Counted as living area: Yes

Heated: Yes
Finished: Yes
Enclosed: Yes
Contiguous: Yes
Permitted: Yes
Wet space: Yes
Addition: No
Conversion: No

5829 Coyote Ridge Road, Reno, Washoe County, Nevada, United States, 89523

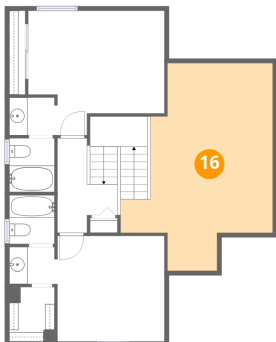
15 Floor 2 - Bedroom



Dimensions: 11'9" x 11'6"
Area: 135 sq. ft
Counted as living area: Yes

Heated: Yes
Finished: Yes
Enclosed: Yes
Contiguous: Yes
Permitted: Yes
Wet space: No
Addition: No
Conversion: No

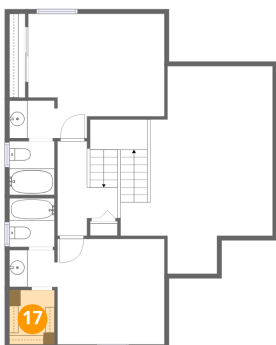
16 Floor 2 - Open To Below



Dimensions: 16'8" x 22'9"
Area: 379 sq. ft
Counted as living area: No

Heated: No
Finished: No
Enclosed: No
Contiguous: Yes
Permitted: No
Wet space: No
Addition: No
Conversion: No

17 Floor 2 - W.I.C.

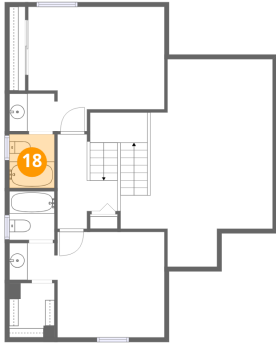


Dimensions: 4'11" x 6'0"
Area: 29 sq. ft
Counted as living area: Yes

Heated: Yes
Finished: Yes
Enclosed: Yes
Contiguous: Yes
Permitted: Yes
Wet space: No
Addition: No
Conversion: No

5829 Coyote Ridge Road, Reno, Washoe County, Nevada, United States, 89523

18 Floor 2 - Bath



Dimensions: 4'11" x 5'11"
Area: 29 sq. ft
Counted as living area: Yes

Heated: Yes
Finished: Yes
Enclosed: Yes
Contiguous: Yes
Permitted: Yes
Wet space: Yes
Addition: No
Conversion: No