

# 2027 Saskatchewan Ave

Port Coquitlam BC V3C 5H7

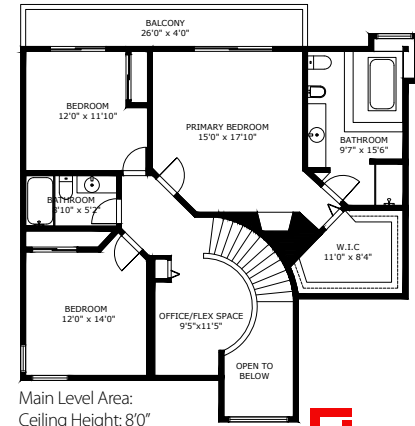
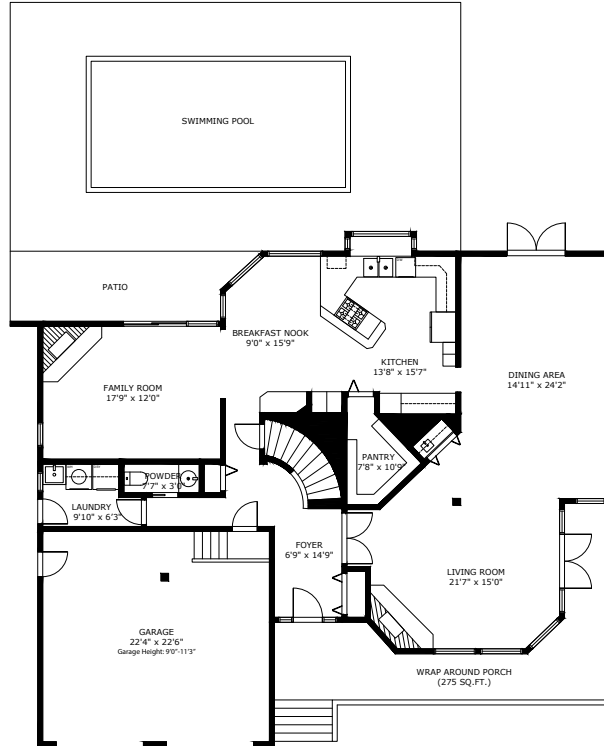
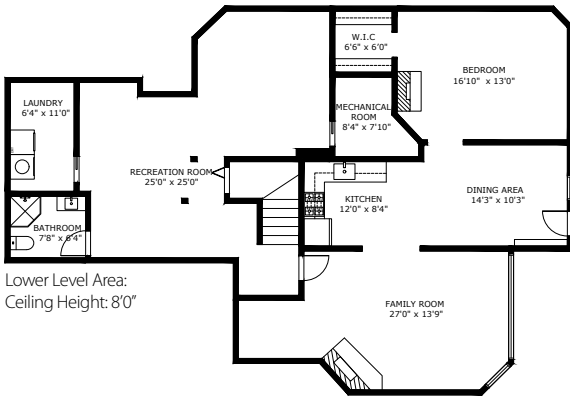
Lower Level Area: 1,525 SQ.FT.  
 Main Level Area: 1,685 SQ.FT.  
 Upper Level Area: 1,085 SQ.FT.  
**Total Area 4,295 SQ.FT.**

Garage Area: 503 SQ.FT.  
**Combined Total Area 4,798 SQ.FT.**

4  
  
 BEDROOMS

4  
  
 BATHROOMS

4,295  
  
 TOTAL SQ.FT.



**3D IMMERSIVE**  
 Tours Photos Floor Plans  
 Professionally measured by: 3D Immersive Marketing Ltd.  
 Lead Floor Planner: *Sue Alexander*  
 Quality Assurance: *Janice Graham*

## 2027 SASKATCHEWAN AVE PORT COQUITLAM BC V3C 5H7

The floor plan illustration is not suitable for construction/architectural purposes. Measurements are approximate and may not be to scale. This communication is not intended to cause or induce breach of an existing agency agreement