

Home data report

5211 Inverchapel Rd, Springfield, VA, US



Total Area: 2131 sq. ft

1st Floor: 408 sq. ft, 2nd Floor: 1148 sq. ft, 3rd Floor: 575 sq. ft

Excluded: Utility 180 sq. ft, Porch 39 sq. ft, Patio 289 sq. ft, Fireplace 5 sq. ft, Walls: 186 sq. ft

Property summary

 **3** Floors

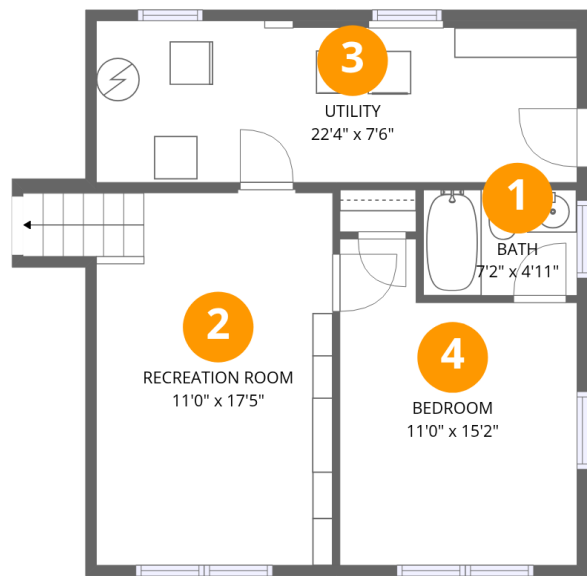
 **3** Bedrooms

 **3** Bathrooms

 **1** Half baths

Home data report

5211 Inverchapel Rd, Springfield, VA, US



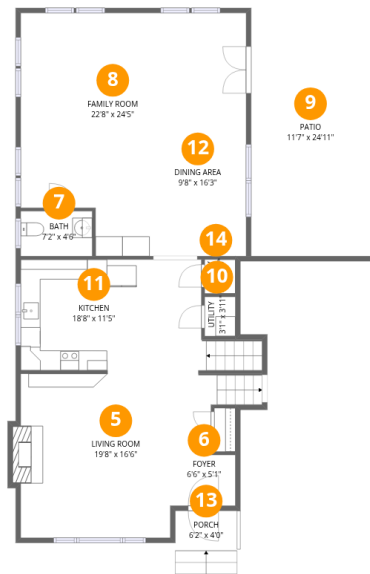
Room dimensions

Floor 1 Total:408sqft Excluded: 168sqft

#		Dimensions	sqft	Counted as living area
1	Bath	7'2" x 4'11"	35 sq. ft	Yes
2	Recreation Room	11'0" x 17'5"	202 sq. ft	Yes
3	Utility	22'4" x 7'6"	168 sq. ft	No
4	Bedroom	11'0" x 15'2"	145 sq. ft	Yes

Home data report

5211 Inverchapel Rd, Springfield, VA, US



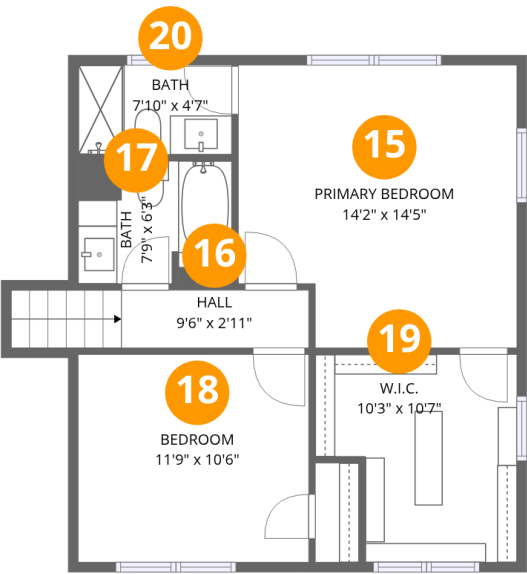
Room dimensions

Floor 2 Total:1148sqft Excluded: 345sqft

#		Dimensions	sqft	Counted as living area
5	Living Room	19'8" x 16'6"	301 sq. ft	Yes
6	Foyer	6'6" x 5'1"	33 sq. ft	Yes
7	Bath	7'2" x 4'6"	32 sq. ft	Yes
8	Family Room	22'8" x 24'5"	358 sq. ft	Yes
9	Patio	11'7" x 24'11"	289 sq. ft	No
10	Utility	3'1" x 3'11"	12 sq. ft	No
11	Kitchen	18'8" x 11'5"	224 sq. ft	Yes
12	Dining Area	9'8" x 16'3"	158 sq. ft	Yes
13	Porch	6'2" x 4'0"	39 sq. ft	No
14	Pantry	3'1" x 3'5"	10 sq. ft	Yes

Home data report

5211 Inverchapel Rd, Springfield, VA, US

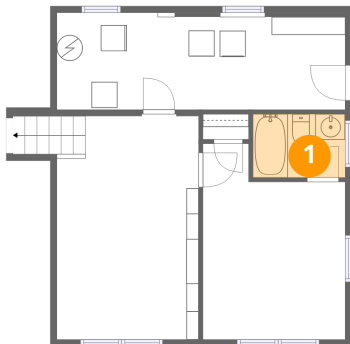


Room dimensions

Floor 3 Total:575sqft Excluded: 0sqft

#		Dimensions	sqft	Counted as living area
15	Primary Bedroom	14'2" x 14'5"	191 sq. ft	Yes
16	Hall	9'6" x 2'11"	44 sq. ft	Yes
17	Bath	7'9" x 6'3"	49 sq. ft	Yes
18	Bedroom	11'9" x 10'6"	124 sq. ft	Yes
19	W.I.C.	10'3" x 10'7"	95 sq. ft	Yes
20	Bath	7'10" x 4'7"	36 sq. ft	Yes

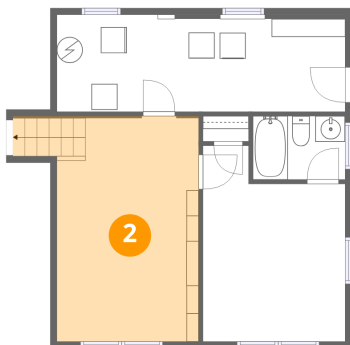
1 Floor 1 - Bath



Dimensions: 7'2" x 4'11"
Area: 35 sq. ft
Counted as living area: Yes

Heated: Yes
Finished: Yes
Enclosed: Yes
Contiguous: Yes
Permitted: Yes
Wet space: Yes
Addition: No
Conversion: No

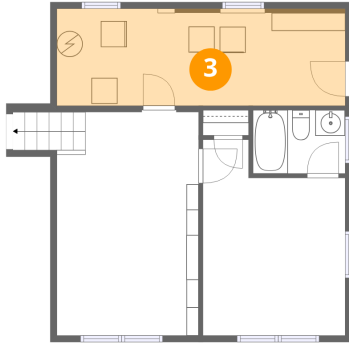
2 Floor 1 - Recreation Room



Dimensions: 11'0" x 17'5"
Area: 202 sq. ft
Counted as living area: Yes

Heated: Yes
Finished: Yes
Enclosed: Yes
Contiguous: Yes
Permitted: Yes
Wet space: No
Addition: No
Conversion: No

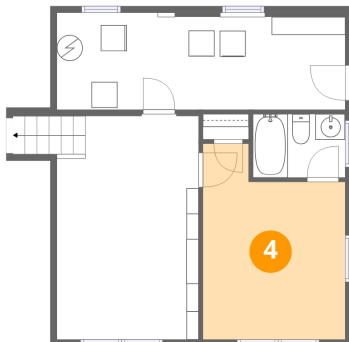
3 Floor 1 - Utility



Dimensions: 22'4" x 7'6"
Area: 168 sq. ft
Counted as living area: No

Heated: Yes
Finished: No
Enclosed: Yes
Contiguous: Yes
Permitted: Yes
Wet space: No
Addition: No
Conversion: No

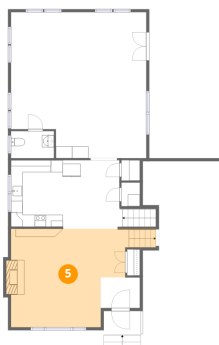
4 Floor 1 - Bedroom



Dimensions: 11'0" x 15'2"
Area: 145 sq. ft
Counted as living area: Yes

Heated: Yes
Finished: Yes
Enclosed: Yes
Contiguous: Yes
Permitted: Yes
Wet space: No
Addition: No
Conversion: No

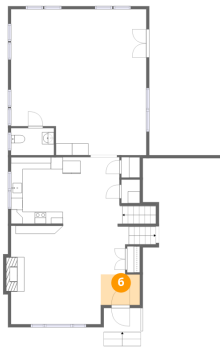
5 Floor 2 - Living Room



Dimensions: 19'8" x 16'6"
Area: 301 sq. ft
Counted as living area: Yes

Heated: Yes
Finished: Yes
Enclosed: Yes
Contiguous: Yes
Permitted: Yes
Wet space: No
Addition: No
Conversion: No

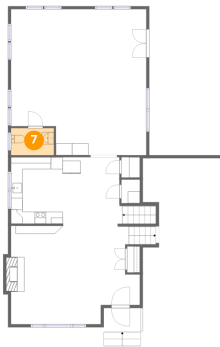
6 Floor 2 - Foyer



Dimensions: 6'6" x 5'1"
Area: 33 sq. ft
Counted as living area: Yes

Heated: Yes
Finished: Yes
Enclosed: Yes
Contiguous: Yes
Permitted: Yes
Wet space: No
Addition: No
Conversion: No

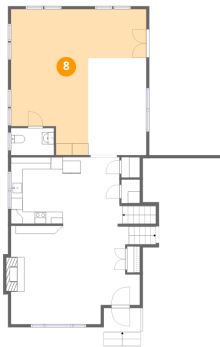
7 Floor 2 - Bath



Dimensions: 7'2" x 4'6"
Area: 32 sq. ft
Counted as living area: Yes

Heated: Yes
Finished: Yes
Enclosed: Yes
Contiguous: Yes
Permitted: Yes
Wet space: Yes
Addition: No
Conversion: No

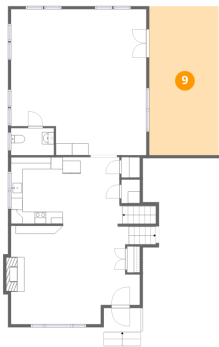
8 Floor 2 - Family Room



Dimensions: 22'8" x 24'5"
Area: 358 sq. ft
Counted as living area: Yes

Heated: Yes
Finished: Yes
Enclosed: Yes
Contiguous: Yes
Permitted: Yes
Wet space: No
Addition: No
Conversion: No

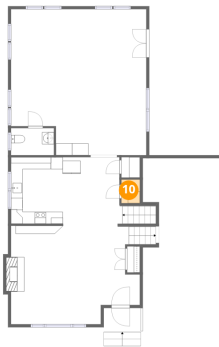
9 Floor 2 - Patio



Dimensions: 11'7" x 24'11"
Area: 289 sq. ft
Counted as living area: No

Heated: No
Finished: No
Enclosed: No
Contiguous: Yes
Permitted: Yes
Wet space: No
Addition: No
Conversion: No

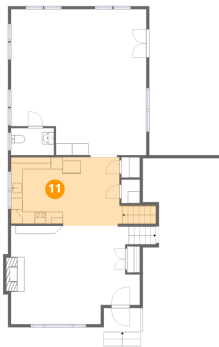
10 Floor 2 - Utility



Dimensions: 3'1" x 3'11"
Area: 12 sq. ft
Counted as living area: No

Heated: Yes
Finished: No
Enclosed: Yes
Contiguous: Yes
Permitted: Yes
Wet space: No
Addition: No
Conversion: No

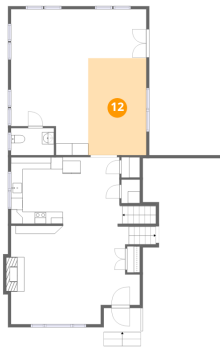
11 Floor 2 - Kitchen



Dimensions: 18'8" x 11'5"
Area: 224 sq. ft
Counted as living area: Yes

Heated: Yes
Finished: Yes
Enclosed: Yes
Contiguous: Yes
Permitted: Yes
Wet space: No
Addition: No
Conversion: No

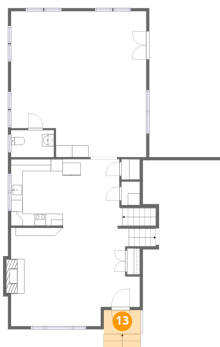
12 Floor 2 - Dining Area



Dimensions: 9'8" x 16'3"
Area: 158 sq. ft
Counted as living area: Yes

Heated: Yes
Finished: Yes
Enclosed: Yes
Contiguous: Yes
Permitted: Yes
Wet space: No
Addition: No
Conversion: No

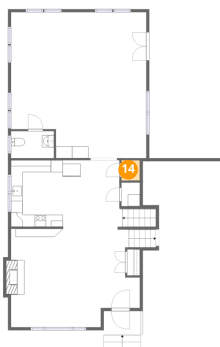
13 Floor 2 - Porch



Dimensions: 6'2" x 4'0"
Area: 39 sq. ft
Counted as living area: No

Heated: No
Finished: No
Enclosed: No
Contiguous: Yes
Permitted: Yes
Wet space: No
Addition: No
Conversion: No

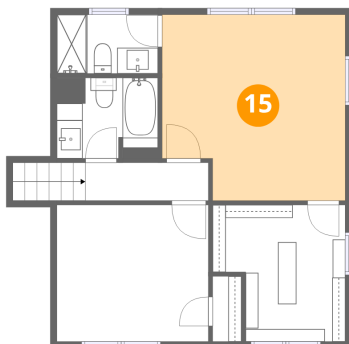
14 Floor 2 - Pantry



Dimensions: 3'1" x 3'5"
Area: 10 sq. ft
Counted as living area: Yes

Heated: Yes
Finished: Yes
Enclosed: Yes
Contiguous: Yes
Permitted: Yes
Wet space: No
Addition: No
Conversion: No

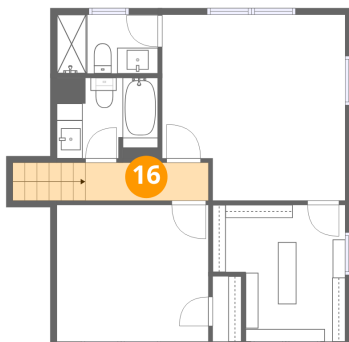
15 Floor 3 - Primary Bedroom



Dimensions: 14'2" x 14'5"
Area: 191 sq. ft
Counted as living area: Yes

Heated: Yes
Finished: Yes
Enclosed: Yes
Contiguous: Yes
Permitted: Yes
Wet space: No
Addition: No
Conversion: No

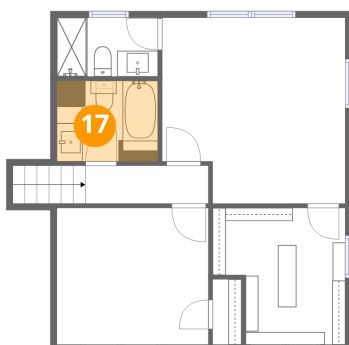
16 Floor 3 - Hall



Dimensions: 9'6" x 2'11"
Area: 44 sq. ft
Counted as living area: Yes

Heated: Yes
Finished: Yes
Enclosed: Yes
Contiguous: Yes
Permitted: Yes
Wet space: No
Addition: No
Conversion: No

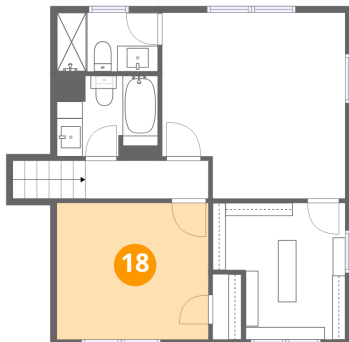
17 Floor 3 - Bath



Dimensions: 7'9" x 6'3"
Area: 49 sq. ft
Counted as living area: Yes

Heated: Yes
Finished: Yes
Enclosed: Yes
Contiguous: Yes
Permitted: Yes
Wet space: Yes
Addition: No
Conversion: No

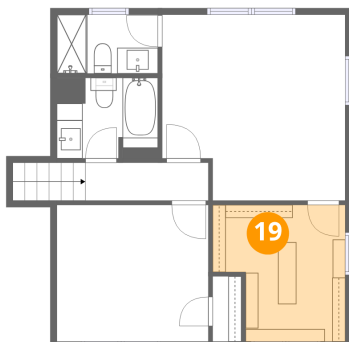
18 Floor 3 - Bedroom



Dimensions: 11'9" x 10'6"
Area: 124 sq. ft
Counted as living area: Yes

Heated: Yes
Finished: Yes
Enclosed: Yes
Contiguous: Yes
Permitted: Yes
Wet space: No
Addition: No
Conversion: No

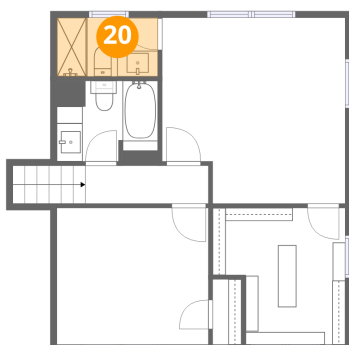
19 Floor 3 - W.I.C.



Dimensions: 10'3" x 10'7"
Area: 95 sq. ft
Counted as living area: Yes

Heated: Yes
Finished: Yes
Enclosed: Yes
Contiguous: Yes
Permitted: Yes
Wet space: No
Addition: No
Conversion: No

20 Floor 3 - Bath



Dimensions: 7'10" x 4'7"
Area: 36 sq. ft
Counted as living area: Yes

Heated: Yes
Finished: Yes
Enclosed: Yes
Contiguous: Yes
Permitted: Yes
Wet space: Yes
Addition: No
Conversion: No