



Home report


5306 Cromwell Court, Canterbury Park, Cave Spring, Roanoke,
Roanoke County, Virginia, United States, 24018





Property summary


 **1** Garages


 **5** Bedrooms

 **3** Bathrooms

 **1** Half baths

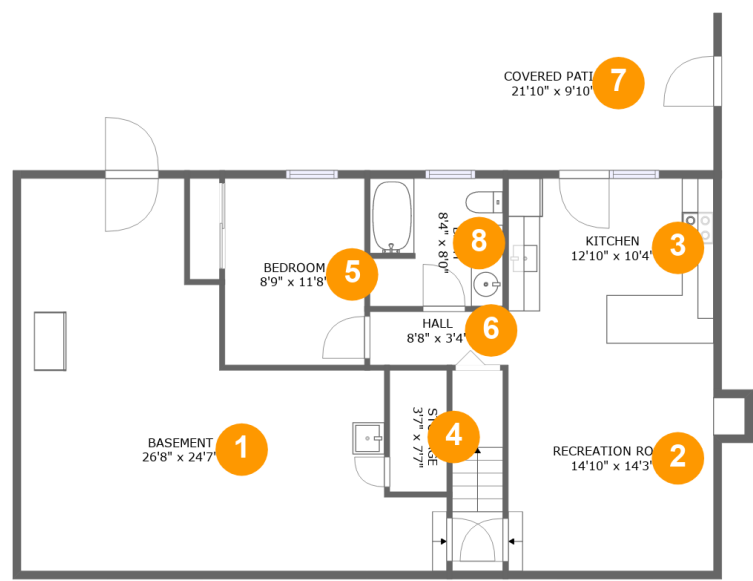
 **3** Floors

 **3,622** Gross living area sqft

 **4,626** Total sqft

Home report

5306 Cromwell Court, Canterbury Park, Cave Spring, Roanoke,
Roanoke County, Virginia, United States, 24018



Room dimensions

Floor 1 Total sqft: 1361 Living area: 1119

#		Dimensions	sqft	Counted as living area
1	Basement	26'8" x 24'7"	439 sq. ft	Yes
2	Recreation Room	14'10" x 14'3"	188 sq. ft	Yes
3	Kitchen	12'10" x 10'4"	133 sq. ft	Yes
4	Storage	3'7" x 7'7"	27 sq. ft	No
5	Bedroom	8'9" x 11'8"	102 sq. ft	Yes
6	Hall	8'8" x 3'4"	29 sq. ft	Yes
7	Covered Patio	21'10" x 9'10"	220 sq. ft	No
8	Bath	8'4" x 8'0"	66 sq. ft	Yes

Home report

5306 Cromwell Court, Canterbury Park, Cave Spring, Roanoke,
Roanoke County, Virginia, United States, 24018



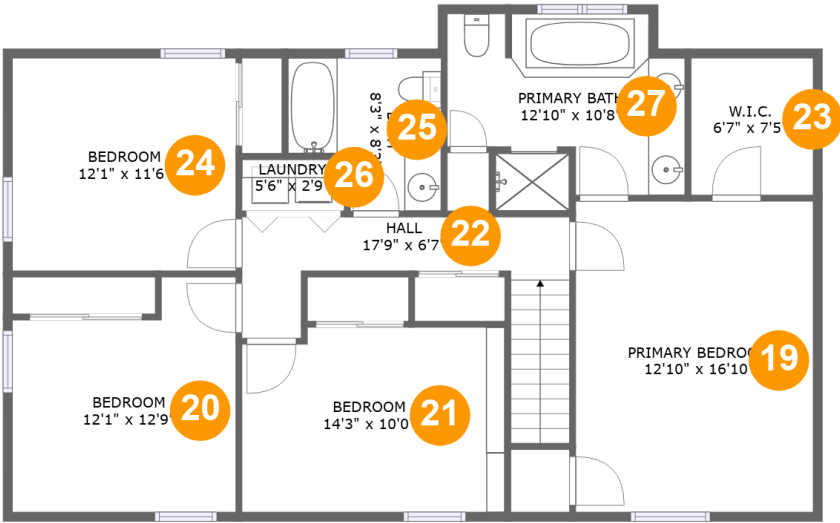
Room dimensions

Floor 2 Total sqft: 2102 Living area: 1340

#		Dimensions	sqft	Counted as living area
9	Dining Room	12'4" x 11'8"	144 sq. ft	Yes
10	Porch	9'11" x 5'7"	86 sq. ft	No
11	Living Room	17'11" x 12'7"	225 sq. ft	Yes
12	Kitchen	17'11" x 13'11"	213 sq. ft	Yes
13	Sunroom	19'9" x 9'6"	172 sq. ft	Yes
14	Family Room	12'10" x 24'7"	325 sq. ft	Yes
15	WC	3'8" x 6'2"	22 sq. ft	Yes
16	Foyer	8'4" x 12'7"	116 sq. ft	Yes
17	Garage	23'6" x 23'0"	529 sq. ft	No
18	Balcony	11'5" x 6'8"	77 sq. ft	No

Home report

5306 Cromwell Court, Canterbury Park, Cave Spring, Roanoke,
Roanoke County, Virginia, United States, 24018



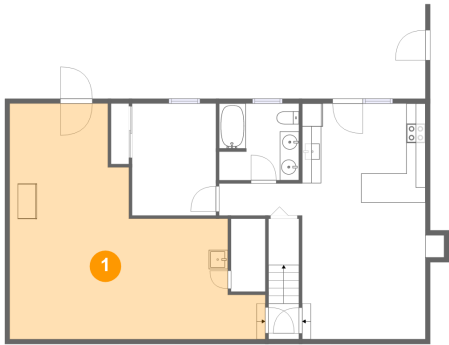
Room dimensions

Floor 3 Total sqft: 1163 Living area: 1163

#		Dimensions	sqft	Counted as living area
19	Primary Bedroom	12'10" x 16'10"	216 sq. ft	Yes
20	Bedroom	12'1" x 12'9"	135 sq. ft	Yes
21	Bedroom	14'3" x 10'0"	139 sq. ft	Yes
22	Hall	17'9" x 6'7"	93 sq. ft	Yes
23	W.I.C.	6'7" x 7'5"	49 sq. ft	Yes
24	Bedroom	12'1" x 11'6"	139 sq. ft	Yes
25	Bath	8'3" x 8'3"	58 sq. ft	Yes
26	Laundry	5'6" x 2'9"	15 sq. ft	Yes
27	Primary Bath	12'10" x 10'8"	116 sq. ft	Yes

5306 Cromwell Court, Canterbury Park, Cave Spring, Roanoke,
Roanoke County, Virginia, United States, 24018

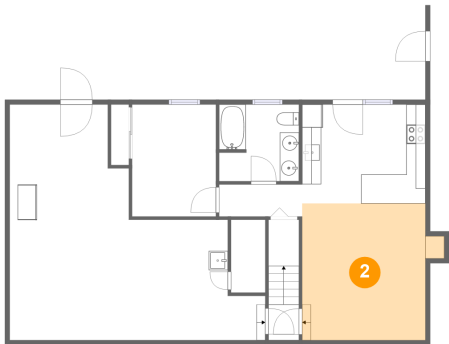
1 Floor 1 - Basement



Dimensions: 26'8" x 24'7"
Area: 439 sq. ft
Counted as living area: Yes

Heated: Yes
Finished: Yes
Enclosed: Yes
Contiguous: Yes
Permitted: Yes
Wet space: No
Addition: No
Conversion: No

2 Floor 1 - Recreation Room



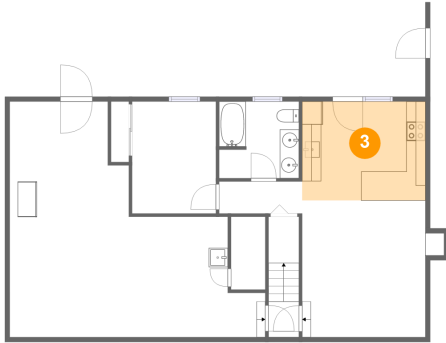
Dimensions: 14'10" x 14'3"
Area: 188 sq. ft
Counted as living area: Yes

Heated: Yes
Finished: Yes
Enclosed: Yes
Contiguous: Yes
Permitted: Yes
Wet space: No
Addition: No
Conversion: No

Home report

5306 Cromwell Court, Canterbury Park, Cave Spring, Roanoke,
Roanoke County, Virginia, United States, 24018

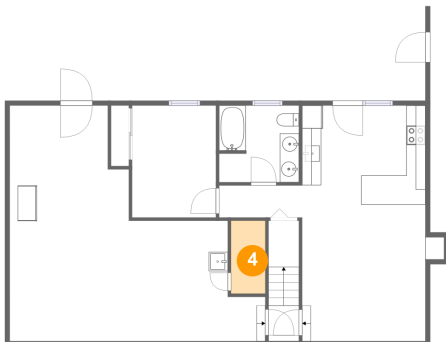
3 Floor 1 - Kitchen



Dimensions: 12'10" x 10'4"
Area: 133 sq. ft
Counted as living area: Yes

Heated: Yes
Finished: Yes
Enclosed: Yes
Contiguous: Yes
Permitted: Yes
Wet space: No
Addition: No
Conversion: No

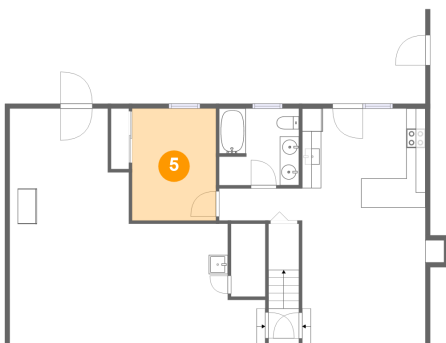
4 Floor 1 - Storage



Dimensions: 3'7" x 7'7"
Area: 27 sq. ft
Counted as living area: No

Heated: No
Finished: No
Enclosed: No
Contiguous: Yes
Permitted: Yes
Wet space: No
Addition: No
Conversion: No

5 Floor 1 - Bedroom



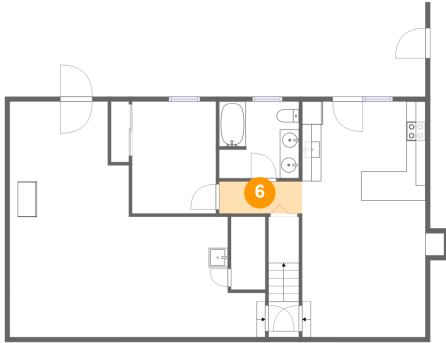
Dimensions: 8'9" x 11'8"
Area: 102 sq. ft
Counted as living area: Yes

Heated: Yes
Finished: Yes
Enclosed: Yes
Contiguous: Yes
Permitted: Yes
Wet space: No
Addition: No
Conversion: No

Home report

5306 Cromwell Court, Canterbury Park, Cave Spring, Roanoke,
Roanoke County, Virginia, United States, 24018

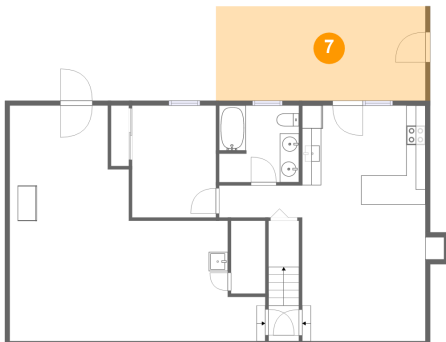
6 Floor 1 - Hall



Dimensions: 8'8" x 3'4"
Area: 29 sq. ft
Counted as living area: Yes

Heated: Yes
Finished: Yes
Enclosed: Yes
Contiguous: Yes
Permitted: Yes
Wet space: No
Addition: No
Conversion: No

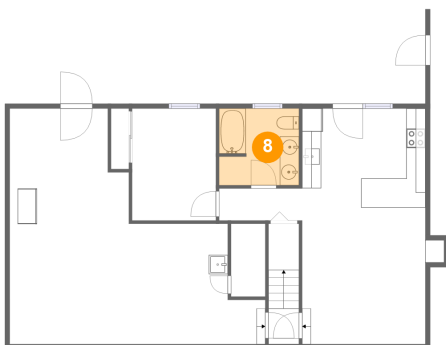
7 Floor 1 - Covered Patio



Dimensions: 21'10" x 9'10"
Area: 220 sq. ft
Counted as living area: No

Heated: No
Finished: Yes
Enclosed: No
Contiguous: Yes
Permitted: Yes
Wet space: No
Addition: No
Conversion: No

8 Floor 1 - Bath

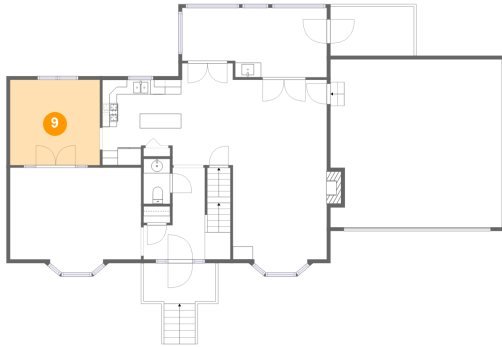


Dimensions: 8'4" x 8'0"
Area: 66 sq. ft
Counted as living area: Yes

Heated: Yes
Finished: Yes
Enclosed: Yes
Contiguous: Yes
Permitted: Yes
Wet space: Yes
Addition: No
Conversion: No

5306 Cromwell Court, Canterbury Park, Cave Spring, Roanoke,
Roanoke County, Virginia, United States, 24018

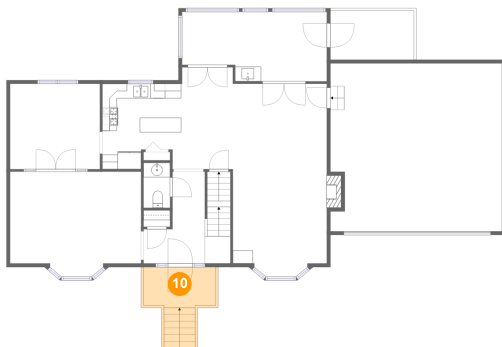
9 Floor 2 - Dining Room



Dimensions: 12'4" x 11'8"
Area: 144 sq. ft
Counted as living area: Yes

Heated: Yes
Finished: Yes
Enclosed: Yes
Contiguous: Yes
Permitted: Yes
Wet space: No
Addition: No
Conversion: No

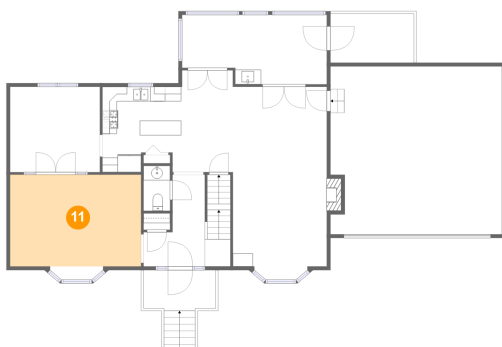
10 Floor 2 - Porch



Dimensions: 9'11" x 5'7"
Area: 86 sq. ft
Counted as living area: No

Heated: No
Finished: Yes
Enclosed: No
Contiguous: Yes
Permitted: Yes
Wet space: No
Addition: No
Conversion: No

11 Floor 2 - Living Room

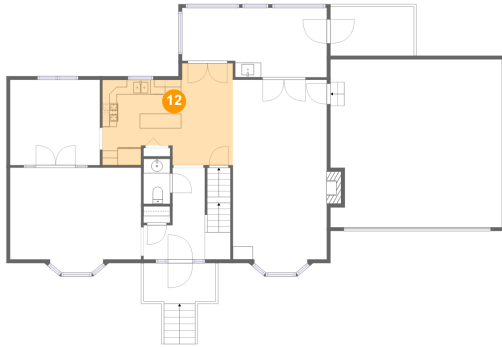


Dimensions: 17'11" x 12'7"
Area: 225 sq. ft
Counted as living area: Yes

Heated: Yes
Finished: Yes
Enclosed: Yes
Contiguous: Yes
Permitted: Yes
Wet space: No
Addition: No
Conversion: No

5306 Cromwell Court, Canterbury Park, Cave Spring, Roanoke,
Roanoke County, Virginia, United States, 24018

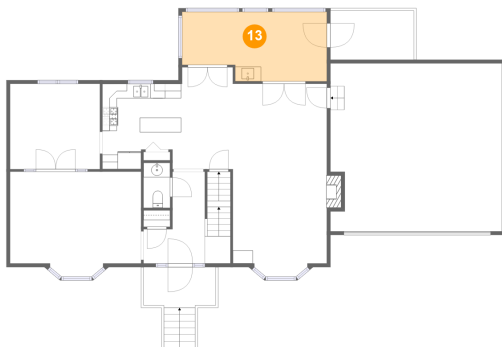
12 Floor 2 - Kitchen



Dimensions: 17'11" x 13'11"
Area: 213 sq. ft
Counted as living area: Yes

Heated: Yes
Finished: Yes
Enclosed: Yes
Contiguous: Yes
Permitted: Yes
Wet space: No
Addition: No
Conversion: No

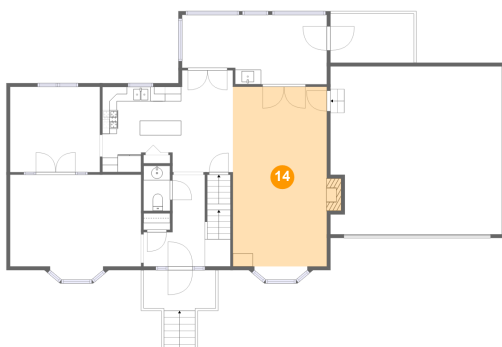
13 Floor 2 - Sunroom



Dimensions: 19'9" x 9'6"
Area: 172 sq. ft
Counted as living area: Yes

Heated: Yes
Finished: Yes
Enclosed: Yes
Contiguous: Yes
Permitted: Yes
Wet space: No
Addition: No
Conversion: No

14 Floor 2 - Family Room

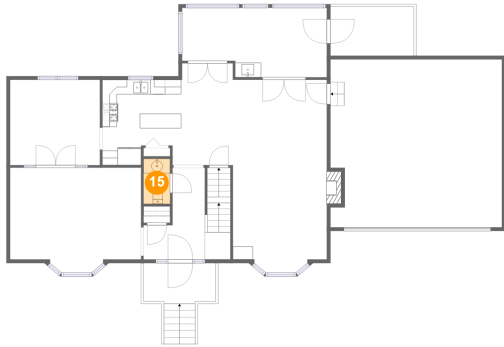


Dimensions: 12'10" x 24'7"
Area: 325 sq. ft
Counted as living area: Yes

Heated: Yes
Finished: Yes
Enclosed: Yes
Contiguous: Yes
Permitted: Yes
Wet space: No
Addition: No
Conversion: No

5306 Cromwell Court, Canterbury Park, Cave Spring, Roanoke,
Roanoke County, Virginia, United States, 24018

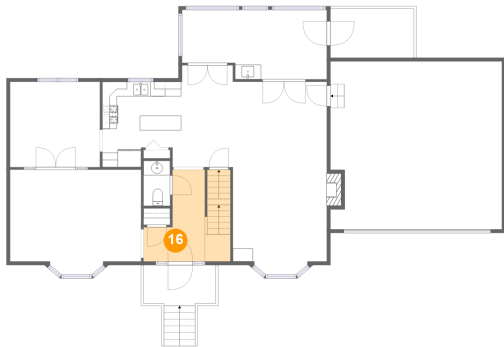
15 Floor 2 - WC



Dimensions: 3'8" x 6'2"
Area: 22 sq. ft
Counted as living area: Yes

Heated: Yes
Finished: Yes
Enclosed: Yes
Contiguous: Yes
Permitted: Yes
Wet space: Yes
Addition: No
Conversion: No

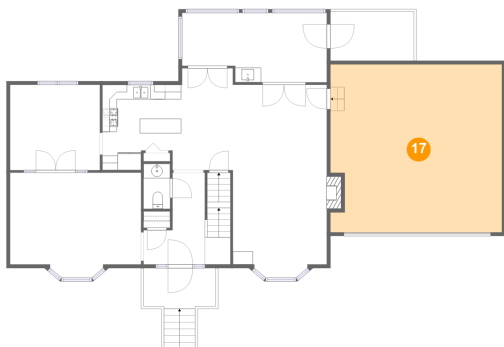
16 Floor 2 - Foyer



Dimensions: 8'4" x 12'7"
Area: 116 sq. ft
Counted as living area: Yes

Heated: Yes
Finished: Yes
Enclosed: Yes
Contiguous: Yes
Permitted: Yes
Wet space: No
Addition: No
Conversion: No

17 Floor 2 - Garage



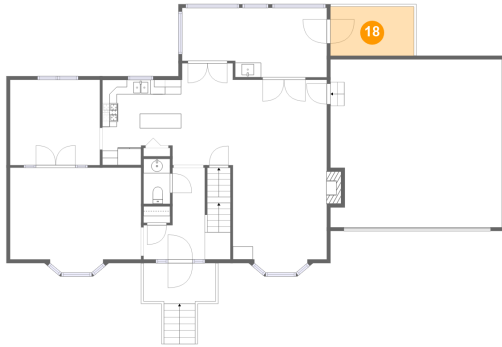
Dimensions: 23'6" x 23'0"
Area: 529 sq. ft
Counted as living area: No

Heated: No
Finished: No
Enclosed: Yes
Contiguous: Yes
Permitted: Yes
Wet space: No
Addition: No
Conversion: No

Home report

5306 Cromwell Court, Canterbury Park, Cave Spring, Roanoke,
Roanoke County, Virginia, United States, 24018

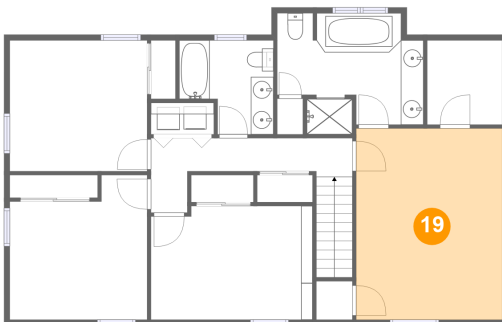
18 Floor 2 - Balcony



Dimensions: 11'5" x 6'8"
Area: 77 sq. ft
Counted as living area: No

Heated: No
Finished: Yes
Enclosed: No
Contiguous: Yes
Permitted: Yes
Wet space: No
Addition: No
Conversion: No

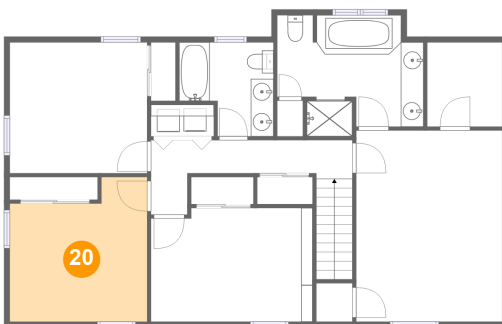
19 Floor 3 - Primary Bedroom



Dimensions: 12'10" x 16'10"
Area: 216 sq. ft
Counted as living area: Yes

Heated: Yes
Finished: Yes
Enclosed: Yes
Contiguous: Yes
Permitted: Yes
Wet space: No
Addition: No
Conversion: No

20 Floor 3 - Bedroom



Dimensions: 12'1" x 12'9"
Area: 135 sq. ft
Counted as living area: Yes

Heated: Yes
Finished: Yes
Enclosed: Yes
Contiguous: Yes
Permitted: Yes
Wet space: No
Addition: No
Conversion: No

5306 Cromwell Court, Canterbury Park, Cave Spring, Roanoke,
Roanoke County, Virginia, United States, 24018

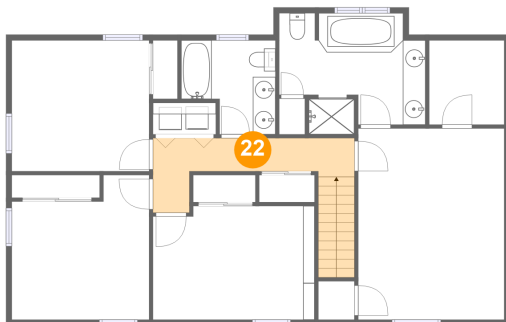
21 Floor 3 - Bedroom



Dimensions: 14'3" x 10'0"
Area: 139 sq. ft
Counted as living area: Yes

Heated: Yes
Finished: Yes
Enclosed: Yes
Contiguous: Yes
Permitted: Yes
Wet space: No
Addition: No
Conversion: No

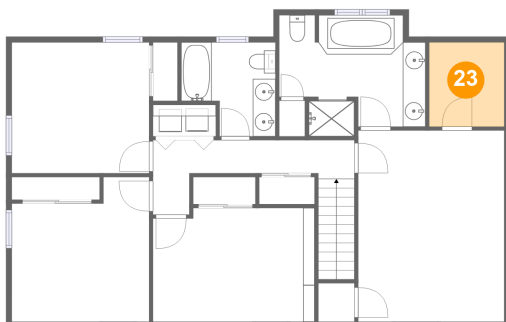
22 Floor 3 - Hall



Dimensions: 17'9" x 6'7"
Area: 93 sq. ft
Counted as living area: Yes

Heated: Yes
Finished: Yes
Enclosed: Yes
Contiguous: Yes
Permitted: Yes
Wet space: No
Addition: No
Conversion: No

23 Floor 3 - W.I.C.



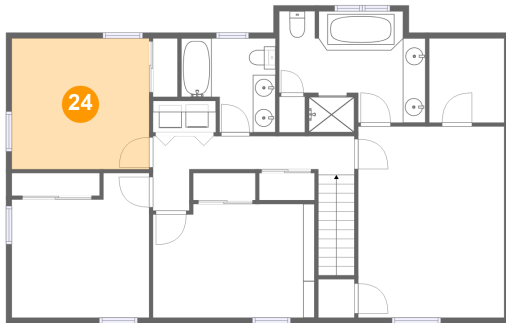
Dimensions: 6'7" x 7'5"
Area: 49 sq. ft
Counted as living area: Yes

Heated: Yes
Finished: Yes
Enclosed: Yes
Contiguous: Yes
Permitted: Yes
Wet space: No
Addition: No
Conversion: No

Home report

5306 Cromwell Court, Canterbury Park, Cave Spring, Roanoke,
Roanoke County, Virginia, United States, 24018

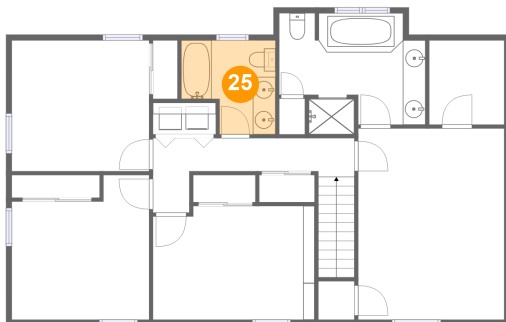
24 Floor 3 - Bedroom



Dimensions: 12'1" x 11'6"
Area: 139 sq. ft
Counted as living area: Yes

Heated: Yes
Finished: Yes
Enclosed: Yes
Contiguous: Yes
Permitted: Yes
Wet space: No
Addition: No
Conversion: No

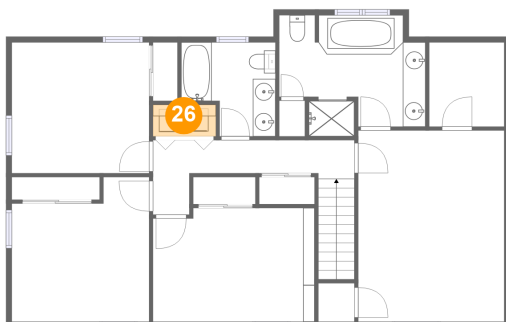
25 Floor 3 - Bath



Dimensions: 8'3" x 8'3"
Area: 58 sq. ft
Counted as living area: Yes

Heated: Yes
Finished: Yes
Enclosed: Yes
Contiguous: Yes
Permitted: Yes
Wet space: Yes
Addition: No
Conversion: No

26 Floor 3 - Laundry

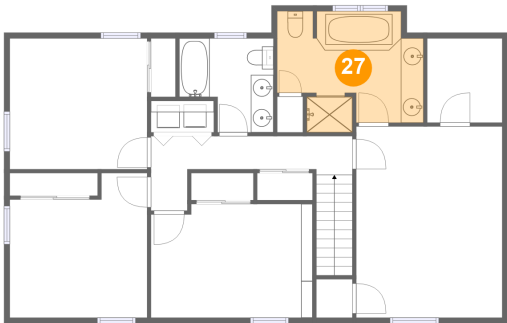


Dimensions: 5'6" x 2'9"
Area: 15 sq. ft
Counted as living area: Yes

Heated: Yes
Finished: Yes
Enclosed: Yes
Contiguous: Yes
Permitted: Yes
Wet space: No
Addition: No
Conversion: No

5306 Cromwell Court, Canterbury Park, Cave Spring, Roanoke,
Roanoke County, Virginia, United States, 24018

27 Floor 3 - Primary Bath



Dimensions: 12'10" x 10'8"
Area: 116 sq. ft
Counted as living area: Yes

Heated: Yes
Finished: Yes
Enclosed: Yes
Contiguous: Yes
Permitted: Yes
Wet space: Yes
Addition: No
Conversion: No