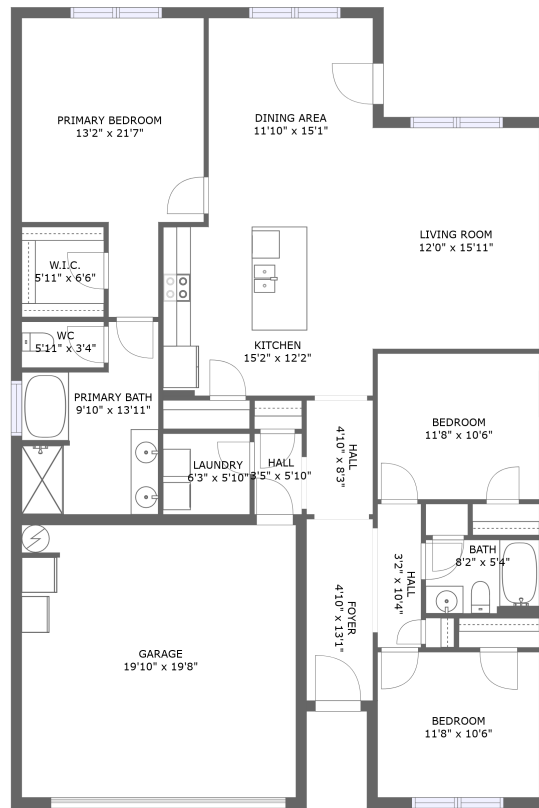


## Home report

14669 Norfleet Drive, Athens, Limestone County,  
Alabama, United States, 35613



FLOOR 1

**Total GLA: 1696 sq. ft**

Floor 1: 1696 sq. ft

Excluded: Garage 426 sq. ft

## Property summary

 **1** Floors

 **3** Bedrooms

 **2** Bathrooms

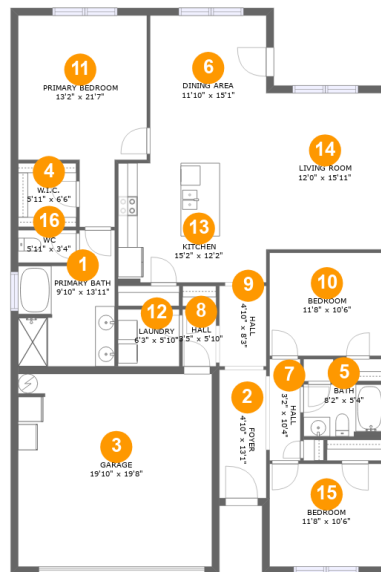
 **1** Garages

Scan captured on Sat, 09 Aug 2025 15:33:29 GMT

FLOOR PLAN CREATED BY CUBICASA APP. MEASUREMENTS DEEMED HIGHLY RELIABLE BUT NOT GUARANTEED.

## Home report

14669 Norfleet Drive, Athens, Limestone County,  
Alabama, United States, 35613



## Room dimensions

Floor 1

Total:1696sqft

Excluded: 426sqft

#		Max Dimensions	sqft	Included
1	Primary Bath	9'10" x 13'11"	113 sq. ft	Yes
2	Foyer	4'10" x 13'1"	63 sq. ft	Yes
3	Garage	19'10" x 19'8"	389 sq. ft	No
4	W.I.C.	5'11" x 6'6"	39 sq. ft	Yes
5	Bath	8'2" x 5'4"	44 sq. ft	Yes
6	Dining Area	11'10" x 15'1"	179 sq. ft	Yes
7	Hall	3'2" x 10'4"	33 sq. ft	Yes
8	Hall	3'5" x 5'10"	20 sq. ft	Yes
9	Hall	4'10" x 8'3"	39 sq. ft	Yes
10	Bedroom	11'8" x 10'6"	123 sq. ft	Yes
11	Primary Bedroom	13'2" x 21'7"	219 sq. ft	Yes

Scan captured on Sat, 09 Aug 2025 15:33:29 GMT

FLOOR PLAN CREATED BY CUBICASA APP. MEASUREMENTS DEEMED HIGHLY RELIABLE BUT NOT GUARANTEED.

## Home report

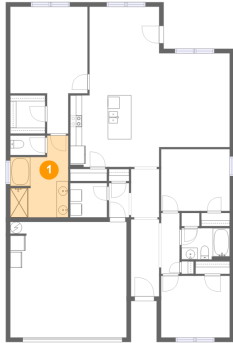
**14669 Norfleet Drive, Athens, Limestone County,  
Alabama, United States, 35613**



#		Max Dimensions	sqft	Included
12	Laundry	6'3" x 5'10"	37 sq. ft	Yes
13	Kitchen	15'2" x 12'2"	185 sq. ft	Yes
14	Living Room	12'0" x 15'11"	192 sq. ft	Yes
15	Bedroom	11'8" x 10'6"	123 sq. ft	Yes
16	WC	5'11" x 3'4"	20 sq. ft	Yes



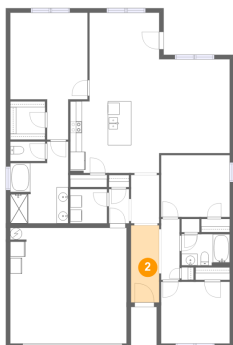
## 1 Floor 1 - Primary Bath



Max Dimensions: 9'10" x  
13'11"  
Calculated Area: 113 sq. ft  
Included: Yes

Heated: Yes  
Finished: Yes  
Enclosed: Yes  
Contiguous:  
Yes  
Permitted: Yes  
Wet space: Yes  
Addition: No  
Conversion: No

## 2 Floor 1 - Foyer

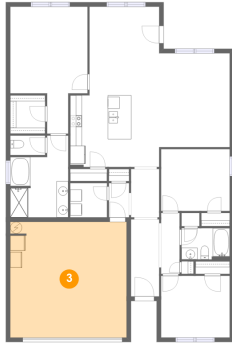


Max Dimensions: 4'10" x  
13'1"  
Calculated Area: 63 sq. ft  
Included: Yes

Heated: Yes  
Finished: Yes  
Enclosed: Yes  
Contiguous:  
Yes  
Permitted: Yes  
Wet space: No  
Addition: No  
Conversion: No



### 3 Floor 1 - Garage



Max Dimensions: 19'10" x 19'8"  
Calculated Area: 389 sq. ft  
Included: No

Heated: No  
Finished: No  
Enclosed: Yes  
Contiguous: Yes  
Permitted: Yes  
Wet space: No  
Addition: No  
Conversion: No

### 4 Floor 1 - W.I.C.



Max Dimensions: 5'11" x 6'6"  
Calculated Area: 39 sq. ft  
Included: Yes

Heated: Yes  
Finished: Yes  
Enclosed: Yes  
Contiguous: Yes  
Permitted: Yes  
Wet space: No  
Addition: No  
Conversion: No

### 5 Floor 1 - Bath

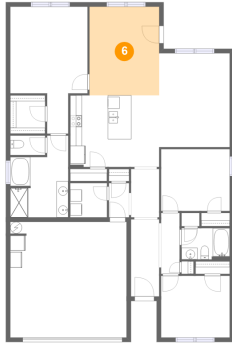


Max Dimensions: 8'2" x 5'4"  
Calculated Area: 44 sq. ft  
Included: Yes

Heated: Yes  
Finished: Yes  
Enclosed: Yes  
Contiguous: Yes  
Permitted: Yes  
Wet space: Yes  
Addition: No  
Conversion: No



## 6 Floor 1 - Dining Area



Max Dimensions: 11'10" x 15'1"  
Calculated Area: 179 sq. ft  
Included: Yes

Heated: Yes  
Finished: Yes  
Enclosed: Yes  
Contiguous: Yes  
Permitted: Yes  
Wet space: No  
Addition: No  
Conversion: No

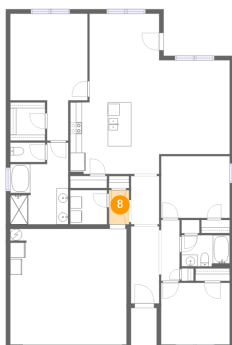
## 7 Floor 1 - Hall



Max Dimensions: 3'2" x 10'4"  
Calculated Area: 33 sq. ft  
Included: Yes

Heated: Yes  
Finished: Yes  
Enclosed: Yes  
Contiguous: Yes  
Permitted: Yes  
Wet space: No  
Addition: No  
Conversion: No

## 8 Floor 1 - Hall

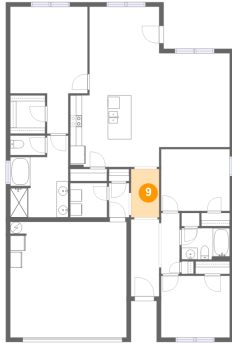


Max Dimensions: 3'5" x 5'10"  
Calculated Area: 20 sq. ft  
Included: Yes

Heated: Yes  
Finished: Yes  
Enclosed: Yes  
Contiguous: Yes  
Permitted: Yes  
Wet space: No  
Addition: No  
Conversion: No



## 9 Floor 1 - Hall



Max Dimensions: 4'10" x 8'3"  
Calculated Area: 39 sq. ft  
Included: Yes

Heated: Yes  
Finished: Yes  
Enclosed: Yes  
Contiguous: Yes  
Permitted: Yes  
Wet space: No  
Addition: No  
Conversion: No

## 10 Floor 1 - Bedroom



Max Dimensions: 11'8" x 10'6"  
Calculated Area: 123 sq. ft  
Included: Yes

Heated: Yes  
Finished: Yes  
Enclosed: Yes  
Contiguous: Yes  
Permitted: Yes  
Wet space: No  
Addition: No  
Conversion: No

## 11 Floor 1 - Primary Bedroom



Max Dimensions: 13'2" x 21'7"  
Calculated Area: 219 sq. ft  
Included: Yes

Heated: Yes  
Finished: Yes  
Enclosed: Yes  
Contiguous: Yes  
Permitted: Yes  
Wet space: No  
Addition: No  
Conversion: No



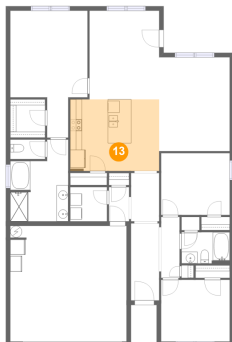
## 12 Floor 1 - Laundry



Max Dimensions: 6'3" x 5'10"  
Calculated Area: 37 sq. ft  
Included: Yes

Heated: Yes  
Finished: Yes  
Enclosed: Yes  
Contiguous: Yes  
Permitted: Yes  
Wet space: No  
Addition: No  
Conversion: No

## 13 Floor 1 - Kitchen



Max Dimensions: 15'2" x 12'2"  
Calculated Area: 185 sq. ft  
Included: Yes

Heated: Yes  
Finished: Yes  
Enclosed: Yes  
Contiguous: Yes  
Permitted: Yes  
Wet space: No  
Addition: No  
Conversion: No

## 14 Floor 1 - Living Room



Max Dimensions: 12'0" x 15'11"  
Calculated Area: 192 sq. ft  
Included: Yes

Heated: Yes  
Finished: Yes  
Enclosed: Yes  
Contiguous: Yes  
Permitted: Yes  
Wet space: No  
Addition: No  
Conversion: No





## 15 Floor 1 - Bedroom



Max Dimensions: 11'8" x  
10'6"  
Calculated Area: 123 sq. ft  
Included: Yes

Heated: Yes  
Finished: Yes  
Enclosed: Yes  
Contiguous:  
Yes  
Permitted: Yes  
Wet space: No  
Addition: No  
Conversion: No

## 16 Floor 1 - WC



Max Dimensions: 5'11" x  
3'4"  
Calculated Area: 20 sq. ft  
Included: Yes

Heated: Yes  
Finished: Yes  
Enclosed: Yes  
Contiguous:  
Yes  
Permitted: Yes  
Wet space: Yes  
Addition: No  
Conversion: No