

Home report

3317 Forest Ridge Road,Roanoke,Virginia,United States



Total Area: 1127 sq. ft
Floor 1: 759 sq. ft, Floor 2: 368 sq. ft
Excluded: Outdoor Deck 84 sq. ft

Property summary

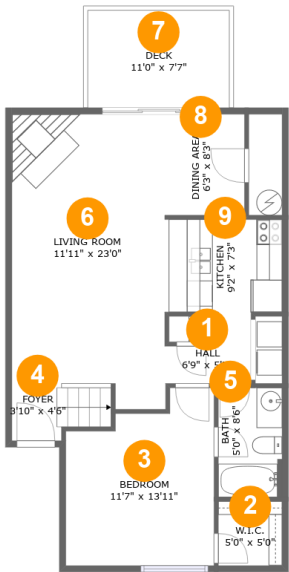
 **2** Floors

 **2** Bedrooms

 **2** Bathrooms

Home report

3317 Forest Ridge Road,Roanoke,Virginia,United States



Room dimensions

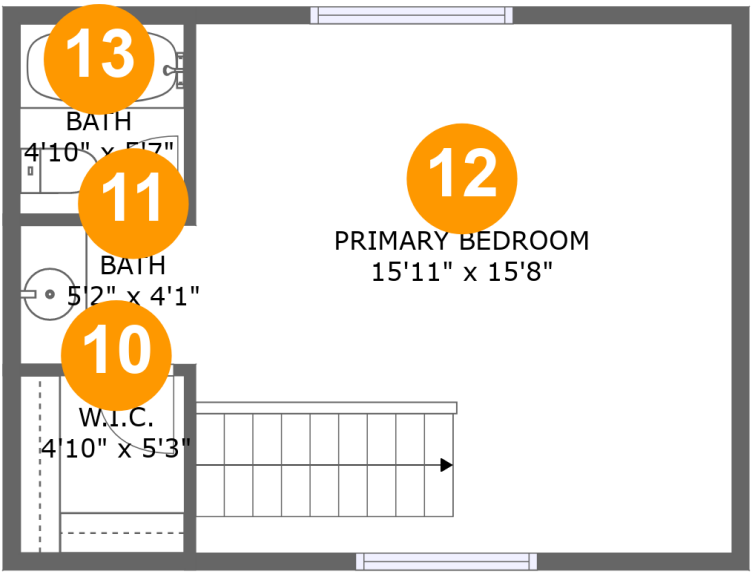
Floor 1

Total:759sqft Excluded: 84sqft

#		Max Dimensions	sqft	Included
1	Hall	6'9" x 5'7"	27 sq. ft	Yes
2	W.I.C.	5'0" x 5'0"	25 sq. ft	Yes
3	Bedroom	11'7" x 13'11"	139 sq. ft	Yes
4	Foyer	3'10" x 4'6"	30 sq. ft	Yes
5	Bath	5'0" x 8'6"	42 sq. ft	Yes
6	Living Room	11'11" x 23'0"	259 sq. ft	Yes
7	Deck	11'0" x 7'7"	84 sq. ft	No
8	Dining Area	6'3" x 8'3"	50 sq. ft	Yes
9	Kitchen	9'2" x 7'3"	66 sq. ft	Yes

Home report

3317 Forest Ridge Road,Roanoke,Virginia,United States

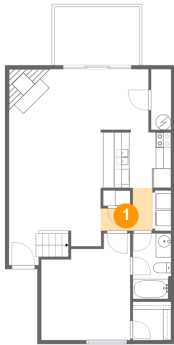


Room dimensions

Floor 2 Total:368sqft Excluded: 0sqft

#		Max Dimensions	sqft	Included
10	W.I.C.	4'10" x 5'3"	26 sq. ft	Yes
11	Bath	5'2" x 4'1"	21 sq. ft	Yes
12	Primary Bedroom	15'11" x 15'8"	249 sq. ft	Yes
13	Bath	4'10" x 5'7"	27 sq. ft	Yes

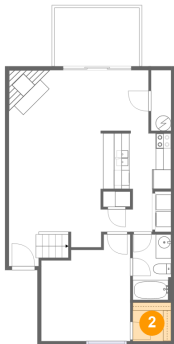
1 Floor 1 - Hall



Max Dimensions: 6'9" x 5'7"
Calculated Area: 27 sq. ft
Included: Yes

Heated: Yes
Finished: Yes
Enclosed: Yes
Contiguous: Yes
Permitted: Yes
Wet space: No
Addition: No
Conversion: No

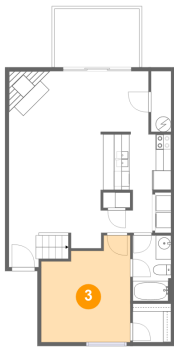
2 Floor 1 - W.I.C.



Max Dimensions: 5'0" x 5'0"
Calculated Area: 25 sq. ft
Included: Yes

Heated: Yes
Finished: Yes
Enclosed: Yes
Contiguous: Yes
Permitted: Yes
Wet space: No
Addition: No
Conversion: No

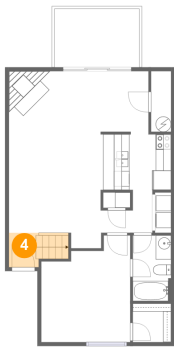
3 Floor 1 - Bedroom



Max Dimensions: 11'7" x 13'11"
Calculated Area: 139 sq. ft
Included: Yes

Heated: Yes
Finished: Yes
Enclosed: Yes
Contiguous: Yes
Permitted: Yes
Wet space: No
Addition: No
Conversion: No

4 Floor 1 - Foyer



Max Dimensions: 3'10" x 4'6"
Calculated Area: 30 sq. ft
Included: Yes

Heated: Yes
Finished: Yes
Enclosed: Yes
Contiguous: Yes
Permitted: Yes
Wet space: No
Addition: No
Conversion: No

5 Floor 1 - Bath



Max Dimensions: 5'0" x 8'6"
Calculated Area: 42 sq. ft
Included: Yes

Heated: Yes
Finished: Yes
Enclosed: Yes
Contiguous: Yes
Permitted: Yes
Wet space: Yes
Addition: No
Conversion: No

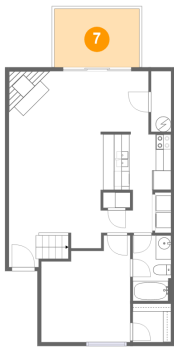
6 Floor 1 - Living Room



Max Dimensions: 11'11" x 23'0"
Calculated Area: 259 sq. ft
Included: Yes

Heated: Yes
Finished: Yes
Enclosed: Yes
Contiguous: Yes
Permitted: Yes
Wet space: No
Addition: No
Conversion: No

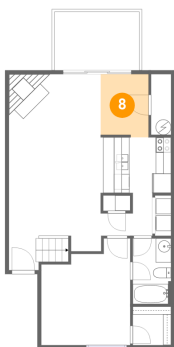
7 Floor 1 - Deck



Max Dimensions: 11'0" x 7'7"
Calculated Area: 84 sq. ft
Included: No

Heated: No
Finished: Yes
Enclosed: No
Contiguous: No
Permitted: Yes
Wet space: No
Addition: No
Conversion: No

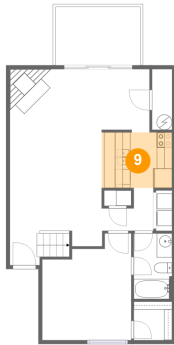
8 Floor 1 - Dining Area



Max Dimensions: 6'3" x 8'3"
Calculated Area: 50 sq. ft
Included: Yes

Heated: Yes
Finished: Yes
Enclosed: Yes
Contiguous: Yes
Permitted: Yes
Wet space: No
Addition: No
Conversion: No

9 Floor 1 - Kitchen



Max Dimensions: 9'2" x 7'3"
Calculated Area: 66 sq. ft
Included: Yes

Heated: Yes
Finished: Yes
Enclosed: Yes
Contiguous: Yes
Permitted: Yes
Wet space: No
Addition: No
Conversion: No

10 Floor 2 - W.I.C.



Max Dimensions: 4'10" x 5'3"
Calculated Area: 26 sq. ft
Included: Yes

Heated: Yes
Finished: Yes
Enclosed: Yes
Contiguous: Yes
Permitted: Yes
Wet space: No
Addition: No
Conversion: No

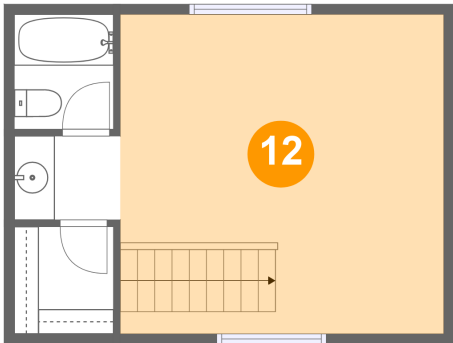
11 Floor 2 - Bath



Max Dimensions: 5'2" x 4'1"
Calculated Area: 21 sq. ft
Included: Yes

Heated: Yes
Finished: Yes
Enclosed: Yes
Contiguous: Yes
Permitted: Yes
Wet space: Yes
Addition: No
Conversion: No

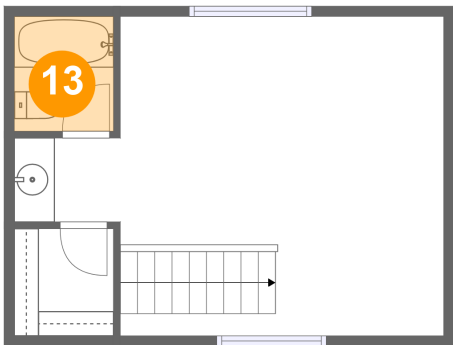
12 Floor 2 - Primary Bedroom



Max Dimensions: 15'11" x 15'8"
Calculated Area: 249 sq. ft
Included: Yes

Heated: Yes
Finished: Yes
Enclosed: Yes
Contiguous: Yes
Permitted: Yes
Wet space: No
Addition: No
Conversion: No

13 Floor 2 - Bath



Max Dimensions: 4'10" x 5'7"
Calculated Area: 27 sq. ft
Included: Yes

Heated: Yes
Finished: Yes
Enclosed: Yes
Contiguous: Yes
Permitted: Yes
Wet space: Yes
Addition: No
Conversion: No