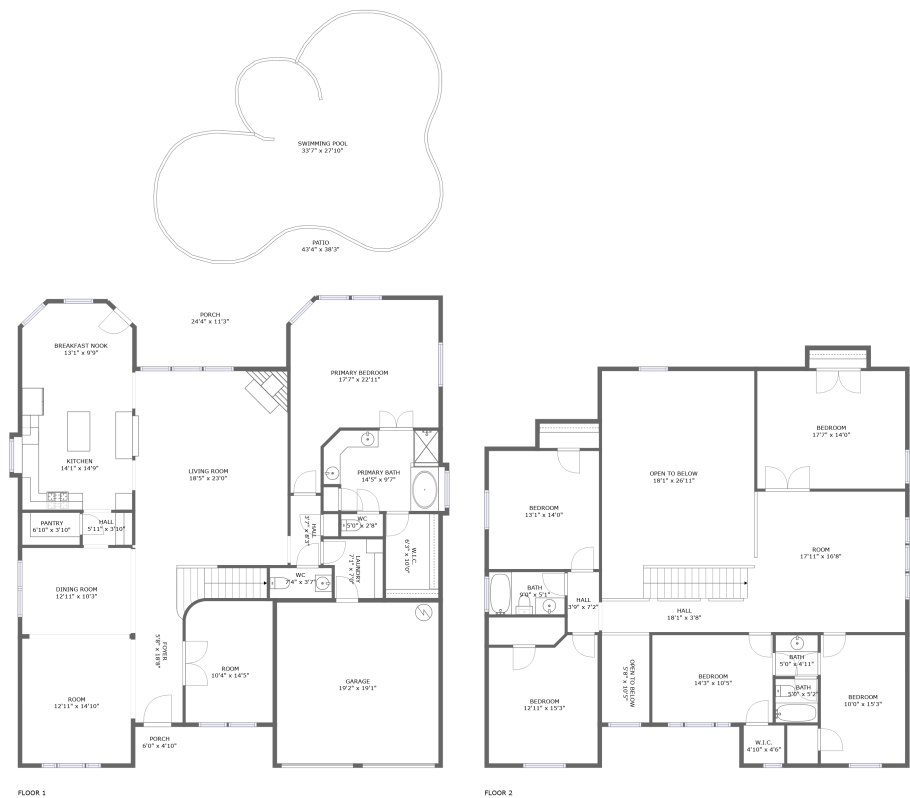




Home report


14057 Zippo Way, Sendera Ranch, Haslet, Tarrant County,
Texas, United States, 76052




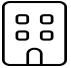
Property summary


**1** Garages


**6** Bedrooms

**3** Bathrooms

**1** Half baths

**2** Floors

**3,914** Gross living area sqft

**5,711** Total sqft

14057 Zippo Way, Sendera Ranch, Haslet, Tarrant County,
Texas, United States, 76052



Room dimensions

Floor 1 Total sqft: 3479 Living area: 2191

#		Dimensions	sqft	Counted as living area
1	WC	7'4" x 3'7"	26 sq. ft	Yes
2	Hall	3'7" x 8'3"	29 sq. ft	Yes
3	Living Room	18'5" x 23'0"	418 sq. ft	Yes
4	Foyer	5'8" x 18'8"	144 sq. ft	Yes
5	Room	10'4" x 14'5"	148 sq. ft	Yes
6	Hall	5'11" x 3'10"	23 sq. ft	Yes
7	Laundry	7'1" x 7'0"	44 sq. ft	Yes
8	Primary Bath	14'5" x 9'7"	126 sq. ft	Yes
9	WC	5'0" x 2'8"	13 sq. ft	Yes
10	Porch	6'0" x 4'10"	29 sq. ft	No
11	Breakfast Nook	13'1" x 9'9"	118 sq. ft	Yes

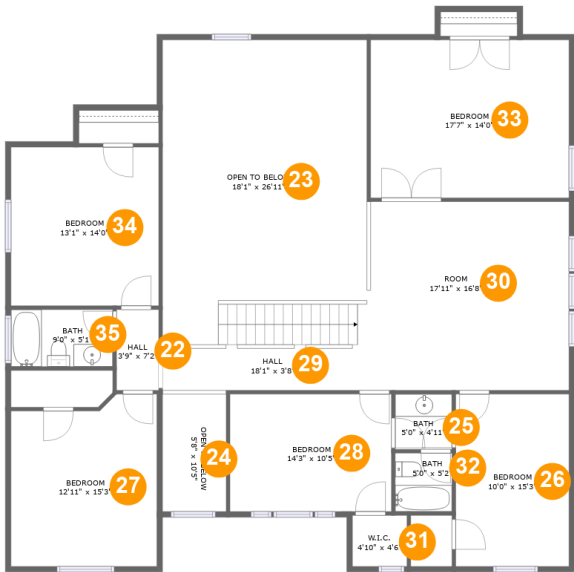
Home report

**14057 Zippo Way, Sendera Ranch, Haslet, Tarrant County,
Texas, United States, 76052**

#		Dimensions	sqft	Counted as living area
12	Pantry	6'10" x 3'10"	26 sq. ft	Yes
13	Dining Room	12'11" x 10'3"	132 sq. ft	Yes
14	Kitchen	14'1" x 14'9"	197 sq. ft	Yes
15	Swimming Pool	33'7" x 27'10"	671 sq. ft	No
16	Patio	43'4" x 38'3"	1315 sq. ft	No
17	W.I.C.	6'3" x 10'0"	62 sq. ft	Yes
18	Room	12'11" x 14'10"	191 sq. ft	Yes
19	Primary Bedroom	17'7" x 22'11"	291 sq. ft	Yes
20	Porch	24'4" x 11'3"	227 sq. ft	No
21	Garage	19'2" x 19'1"	366 sq. ft	No

Home report

14057 Zippo Way, Sendera Ranch, Haslet, Tarrant County,
Texas, United States, 76052



Room dimensions

Floor 2 Total sqft: 2232 Living area: 1723

#		Dimensions	sqft	Counted as living area
22	Hall	3'9" x 7'2"	27 sq. ft	Yes
23	Open To Below	18'1" x 26'11"	436 sq. ft	No
24	Open To Below	5'8" x 10'5"	58 sq. ft	No
25	Bath	5'0" x 4'11"	25 sq. ft	Yes
26	Bedroom	10'0" x 15'3"	153 sq. ft	Yes
27	Bedroom	12'11" x 15'3"	184 sq. ft	Yes
28	Bedroom	14'3" x 10'5"	148 sq. ft	Yes
29	Hall	18'1" x 3'8"	126 sq. ft	Yes
30	Room	17'11" x 16'8"	298 sq. ft	Yes
31	W.I.C.	4'10" x 4'6"	22 sq. ft	Yes
32	Bath	5'0" x 5'2"	26 sq. ft	Yes

Home report

14057 Zippo Way, Sendera Ranch, Haslet, Tarrant County,
Texas, United States, 76052

#		Dimensions	sqft	Counted as living area
33	Bedroom	17'7" x 14'0"	245 sq. ft	Yes
34	Bedroom	13'1" x 14'0"	183 sq. ft	Yes
35	Bath	9'0" x 5'1"	45 sq. ft	Yes

14057 Zippo Way, Sendera Ranch, Haslet, Tarrant County,
Texas, United States, 76052

1 Floor 1 - WC



Dimensions: 7'4" x 3'7"
Area: 26 sq. ft
Counted as living area: Yes

Heated: Yes
Finished: Yes
Enclosed: Yes
Contiguous: Yes
Permitted: Yes
Wet space: No
Addition: No
Conversion: No

2 Floor 1 - Hall



Dimensions: 3'7" x 8'3"
Area: 29 sq. ft
Counted as living area: Yes

Heated: Yes
Finished: Yes
Enclosed: Yes
Contiguous: Yes
Permitted: Yes
Wet space: No
Addition: No
Conversion: No

14057 Zippo Way, Sendera Ranch, Haslet, Tarrant County,
Texas, United States, 76052

3 Floor 1 - Living Room



Dimensions: 18'5" x 23'0"
Area: 418 sq. ft
Counted as living area: Yes

Heated: Yes
Finished: Yes
Enclosed: Yes
Contiguous: Yes
Permitted: Yes
Wet space: No
Addition: No
Conversion: No

4 Floor 1 - Foyer



Dimensions: 5'8" x 18'8"
Area: 144 sq. ft
Counted as living area: Yes

Heated: Yes
Finished: Yes
Enclosed: Yes
Contiguous: Yes
Permitted: Yes
Wet space: No
Addition: No
Conversion: No

5 Floor 1 - Room



Dimensions: 10'4" x 14'5"
Area: 148 sq. ft
Counted as living area: Yes

Heated: Yes
Finished: Yes
Enclosed: Yes
Contiguous: Yes
Permitted: Yes
Wet space: No
Addition: No
Conversion: No

14057 Zippo Way, Sendera Ranch, Haslet, Tarrant County,
Texas, United States, 76052

6 Floor 1 - Hall



Dimensions: 5'11" x 3'10"
Area: 23 sq. ft
Counted as living area: Yes

Heated: Yes
Finished: Yes
Enclosed: Yes
Contiguous: Yes
Permitted: Yes
Wet space: No
Addition: No
Conversion: No

7 Floor 1 - Laundry



Dimensions: 7'1" x 7'0"
Area: 44 sq. ft
Counted as living area: Yes

Heated: Yes
Finished: Yes
Enclosed: Yes
Contiguous: Yes
Permitted: Yes
Wet space: No
Addition: No
Conversion: No

8 Floor 1 - Primary Bath



Dimensions: 14'5" x 9'7"
Area: 126 sq. ft
Counted as living area: Yes

Heated: Yes
Finished: Yes
Enclosed: Yes
Contiguous: Yes
Permitted: Yes
Wet space: Yes
Addition: No
Conversion: No

14057 Zippo Way, Sendera Ranch, Haslet, Tarrant County,
Texas, United States, 76052

9 Floor 1 - WC



Dimensions: 5'0" x 2'8"
Area: 13 sq. ft
Counted as living area: Yes

Heated: Yes
Finished: Yes
Enclosed: Yes
Contiguous: Yes
Permitted: Yes
Wet space: Yes
Addition: No
Conversion: No

10 Floor 1 - Porch



Dimensions: 6'0" x 4'10"
Area: 29 sq. ft
Counted as living area: No

Heated: No
Finished: Yes
Enclosed: No
Contiguous: Yes
Permitted: Yes
Wet space: No
Addition: No
Conversion: No

11 Floor 1 - Breakfast Nook



Dimensions: 13'1" x 9'9"
Area: 118 sq. ft
Counted as living area: Yes

Heated: Yes
Finished: Yes
Enclosed: Yes
Contiguous: Yes
Permitted: Yes
Wet space: No
Addition: No
Conversion: No

14057 Zippo Way, Sendera Ranch, Haslet, Tarrant County,
Texas, United States, 76052

12 Floor 1 - Pantry



Dimensions: 6'10" x 3'10"
Area: 26 sq. ft
Counted as living area: Yes

Heated: Yes
Finished: Yes
Enclosed: Yes
Contiguous: Yes
Permitted: Yes
Wet space: No
Addition: No
Conversion: No

13 Floor 1 - Dining Room



Dimensions: 12'11" x 10'3"
Area: 132 sq. ft
Counted as living area: Yes

Heated: Yes
Finished: Yes
Enclosed: Yes
Contiguous: Yes
Permitted: Yes
Wet space: No
Addition: No
Conversion: No

14 Floor 1 - Kitchen



Dimensions: 14'1" x 14'9"
Area: 197 sq. ft
Counted as living area: Yes

Heated: Yes
Finished: Yes
Enclosed: Yes
Contiguous: Yes
Permitted: Yes
Wet space: No
Addition: No
Conversion: No

14057 Zippo Way, Sendera Ranch, Haslet, Tarrant County,
Texas, United States, 76052

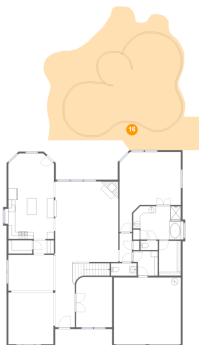
15 Floor 1 - Swimming Pool



Dimensions: 33'7" x 27'10"
Area: 671 sq. ft
Counted as living area: No

Heated: No
Finished: No
Enclosed: No
Contiguous: Yes
Permitted: No
Wet space: No
Addition: No
Conversion: No

16 Floor 1 - Patio



Dimensions: 43'4" x 38'3"
Area: 1315 sq. ft
Counted as living area: No

Heated: No
Finished: Yes
Enclosed: No
Contiguous: Yes
Permitted: Yes
Wet space: No
Addition: No
Conversion: No

17 Floor 1 - W.I.C.



Dimensions: 6'3" x 10'0"
Area: 62 sq. ft
Counted as living area: Yes

Heated: Yes
Finished: Yes
Enclosed: Yes
Contiguous: Yes
Permitted: Yes
Wet space: No
Addition: No
Conversion: No

14057 Zippo Way, Sendera Ranch, Haslet, Tarrant County,
Texas, United States, 76052

18 Floor 1 - Room



Dimensions: 12'11" x 14'10"
Area: 191 sq. ft
Counted as living area: Yes

Heated: Yes
Finished: Yes
Enclosed: Yes
Contiguous: Yes
Permitted: Yes
Wet space: No
Addition: No
Conversion: No

19 Floor 1 - Primary Bedroom



Dimensions: 17'7" x 22'11"
Area: 291 sq. ft
Counted as living area: Yes

Heated: Yes
Finished: Yes
Enclosed: Yes
Contiguous: Yes
Permitted: Yes
Wet space: No
Addition: No
Conversion: No

20 Floor 1 - Porch



Dimensions: 24'4" x 11'3"
Area: 227 sq. ft
Counted as living area: No

Heated: No
Finished: Yes
Enclosed: No
Contiguous: Yes
Permitted: Yes
Wet space: No
Addition: No
Conversion: No

Home report

14057 Zippo Way, Sendera Ranch, Haslet, Tarrant County,
Texas, United States, 76052

21 Floor 1 - Garage



Dimensions: 19'2" x 19'1"
Area: 366 sq. ft
Counted as living area: No

Heated: No
Finished: No
Enclosed: Yes
Contiguous: Yes
Permitted: Yes
Wet space: No
Addition: No
Conversion: No

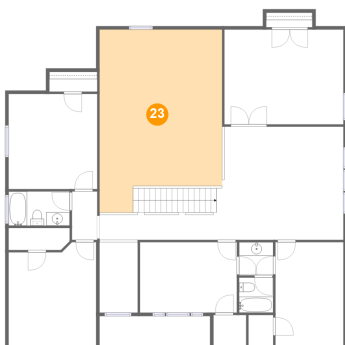
22 Floor 2 - Hall



Dimensions: 3'9" x 7'2"
Area: 27 sq. ft
Counted as living area: Yes

Heated: Yes
Finished: Yes
Enclosed: Yes
Contiguous: Yes
Permitted: Yes
Wet space: No
Addition: No
Conversion: No

23 Floor 2 - Open To Below



Dimensions: 18'1" x 26'11"
Area: 436 sq. ft
Counted as living area: No

Heated: No
Finished: No
Enclosed: No
Contiguous: Yes
Permitted: No
Wet space: No
Addition: No
Conversion: No

Home report

14057 Zippo Way, Sendera Ranch, Haslet, Tarrant County,
Texas, United States, 76052

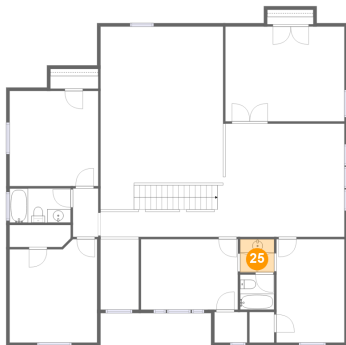
24 Floor 2 - Open To Below



Dimensions: 5'8" x 10'5"
Area: 58 sq. ft
Counted as living area: No

Heated: No
Finished: No
Enclosed: No
Contiguous: Yes
Permitted: No
Wet space: No
Addition: No
Conversion: No

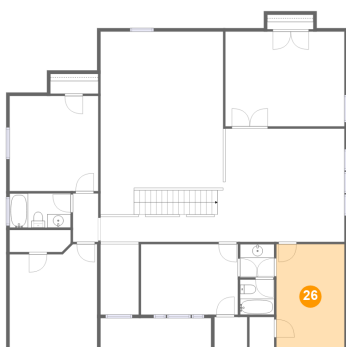
25 Floor 2 - Bath



Dimensions: 5'0" x 4'11"
Area: 25 sq. ft
Counted as living area: Yes

Heated: Yes
Finished: Yes
Enclosed: Yes
Contiguous: Yes
Permitted: Yes
Wet space: Yes
Addition: No
Conversion: No

26 Floor 2 - Bedroom



Dimensions: 10'0" x 15'3"
Area: 153 sq. ft
Counted as living area: Yes

Heated: Yes
Finished: Yes
Enclosed: Yes
Contiguous: Yes
Permitted: Yes
Wet space: No
Addition: No
Conversion: No

Home report

14057 Zippo Way, Sendera Ranch, Haslet, Tarrant County,
Texas, United States, 76052

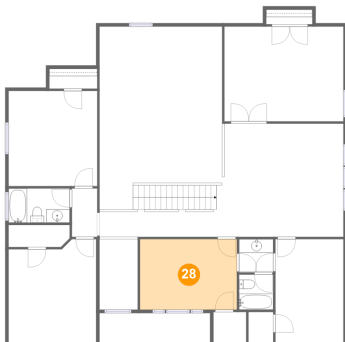
27 Floor 2 - Bedroom



Dimensions: 12'11" x 15'3"
Area: 184 sq. ft
Counted as living area: Yes

Heated: Yes
Finished: Yes
Enclosed: Yes
Contiguous: Yes
Permitted: Yes
Wet space: No
Addition: No
Conversion: No

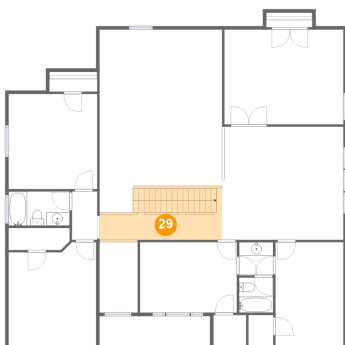
28 Floor 2 - Bedroom



Dimensions: 14'3" x 10'5"
Area: 148 sq. ft
Counted as living area: Yes

Heated: Yes
Finished: Yes
Enclosed: Yes
Contiguous: Yes
Permitted: Yes
Wet space: No
Addition: No
Conversion: No

29 Floor 2 - Hall



Dimensions: 18'1" x 3'8"
Area: 126 sq. ft
Counted as living area: Yes

Heated: Yes
Finished: Yes
Enclosed: Yes
Contiguous: Yes
Permitted: Yes
Wet space: No
Addition: No
Conversion: No

Home report

14057 Zippo Way, Sendera Ranch, Haslet, Tarrant County,
Texas, United States, 76052

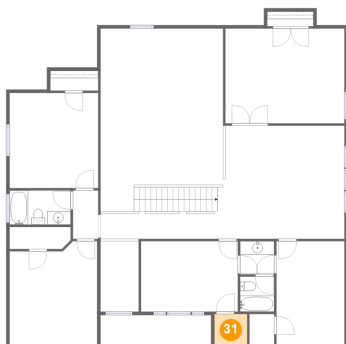
30 Floor 2 - Room



Dimensions: 17'11" x 16'8"
Area: 298 sq. ft
Counted as living area: Yes

Heated: Yes
Finished: Yes
Enclosed: Yes
Contiguous: Yes
Permitted: Yes
Wet space: No
Addition: No
Conversion: No

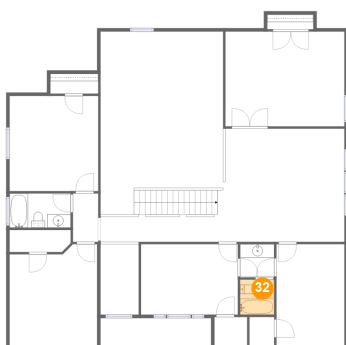
31 Floor 2 - W.I.C.



Dimensions: 4'10" x 4'6"
Area: 22 sq. ft
Counted as living area: Yes

Heated: Yes
Finished: Yes
Enclosed: Yes
Contiguous: Yes
Permitted: Yes
Wet space: No
Addition: No
Conversion: No

32 Floor 2 - Bath



Dimensions: 5'0" x 5'2"
Area: 26 sq. ft
Counted as living area: Yes

Heated: Yes
Finished: Yes
Enclosed: Yes
Contiguous: Yes
Permitted: Yes
Wet space: Yes
Addition: No
Conversion: No

14057 Zippo Way, Sendera Ranch, Haslet, Tarrant County,
Texas, United States, 76052

33 Floor 2 - Bedroom



Dimensions: 17'7" x 14'0"
Area: 245 sq. ft
Counted as living area: Yes

Heated: Yes
Finished: Yes
Enclosed: Yes
Contiguous: Yes
Permitted: Yes
Wet space: No
Addition: No
Conversion: No

34 Floor 2 - Bedroom



Dimensions: 13'1" x 14'0"
Area: 183 sq. ft
Counted as living area: Yes

Heated: Yes
Finished: Yes
Enclosed: Yes
Contiguous: Yes
Permitted: Yes
Wet space: No
Addition: No
Conversion: No

35 Floor 2 - Bath



Dimensions: 9'0" x 5'1"
Area: 45 sq. ft
Counted as living area: Yes

Heated: Yes
Finished: Yes
Enclosed: Yes
Contiguous: Yes
Permitted: Yes
Wet space: Yes
Addition: No
Conversion: No