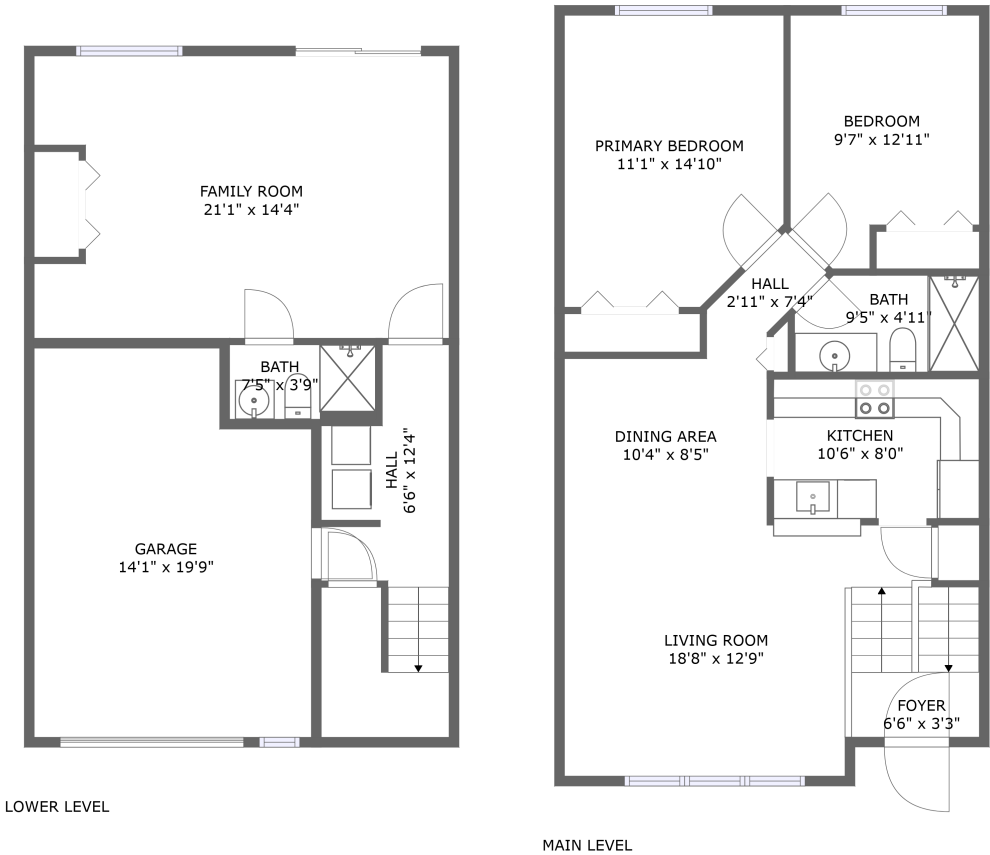


Home report

21 East Elm Street, Lebanon, Lebanon County, Pennsylvania,  
United States, 17042



Total Area: 1257 sq. ft

Floor 1: 454 sq. ft, Floor 2: 803 sq. ft


Excluded: Garage 260 sq. ft, Walls: 133 sq. ft

Property summary

 **2** Floors

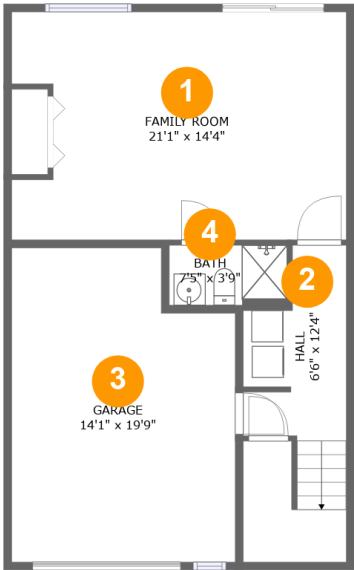
 **2** Bedrooms

 **2** Bathrooms

 **1** Garages

Home report

21 East Elm Street, Lebanon, Lebanon County, Pennsylvania,  
United States, 17042



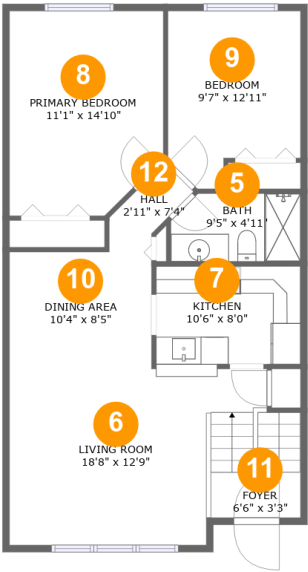
Room dimensions

Floor 1 Total:454sqft   Excluded: 260sqft

#		Max Dimensions	sqft	Included
1	Family Room	21'1" x 14'4"	287 sq. ft	Yes
2	Hall	6'6" x 12'4"	113 sq. ft	Yes
3	Garage	14'1" x 19'9"	260 sq. ft	No
4	Bath	7'5" x 3'9"	28 sq. ft	Yes

Home report

21 East Elm Street, Lebanon, Lebanon County, Pennsylvania,  
United States, 17042



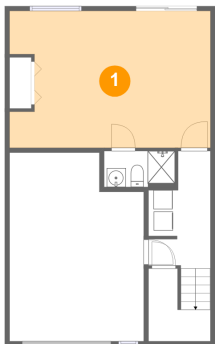
Room dimensions

Floor 2 Total:803sqft Excluded: 0sqft

#		Max Dimensions	sqft	Included
5	Bath	9'5" x 4'11"	44 sq. ft	Yes
6	Living Room	18'8" x 12'9"	224 sq. ft	Yes
7	Kitchen	10'6" x 8'0"	79 sq. ft	Yes
8	Primary Bedroom	11'1" x 14'10"	156 sq. ft	Yes
9	Bedroom	9'7" x 12'11"	109 sq. ft	Yes
10	Dining Area	10'4" x 8'5"	87 sq. ft	Yes
11	Foyer	6'6" x 3'3"	21 sq. ft	Yes
12	Hall	2'11" x 7'4"	21 sq. ft	Yes

21 East Elm Street, Lebanon, Lebanon County, Pennsylvania,  
United States, 17042

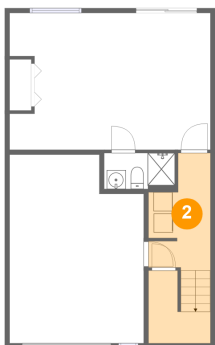
1 Floor 1 - Family Room



Max Dimensions: 21'1" x 14'4"  
Calculated Area: 287 sq. ft  
Included: Yes

Heated: Yes  
Finished: Yes  
Enclosed: Yes  
Contiguous: Yes  
Permitted: Yes  
Wet space: No  
Addition: No  
Conversion: No

2 Floor 1 - Hall

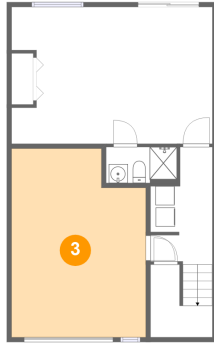


Max Dimensions: 6'6" x 12'4"  
Calculated Area: 113 sq. ft  
Included: Yes

Heated: Yes  
Finished: Yes  
Enclosed: Yes  
Contiguous: Yes  
Permitted: Yes  
Wet space: No  
Addition: No  
Conversion: No

21 East Elm Street, Lebanon, Lebanon County, Pennsylvania,  
United States, 17042

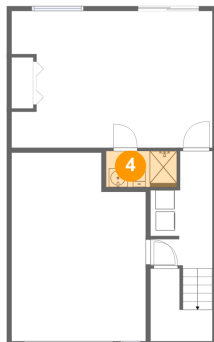
### 3 Floor 1 - Garage



Max Dimensions: 14'1" x 19'9"  
Calculated Area: 260 sq. ft  
Included: No

Heated: No  
Finished: No  
Enclosed: Yes  
Contiguous: Yes  
Permitted: Yes  
Wet space: No  
Addition: No  
Conversion: No

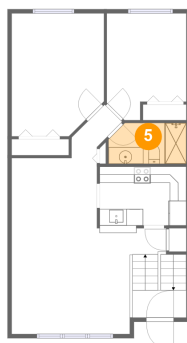
### 4 Floor 1 - Bath



Max Dimensions: 7'5" x 3'9"  
Calculated Area: 28 sq. ft  
Included: Yes

Heated: Yes  
Finished: Yes  
Enclosed: Yes  
Contiguous: Yes  
Permitted: Yes  
Wet space: Yes  
Addition: No  
Conversion: No

### 5 Floor 2 - Bath

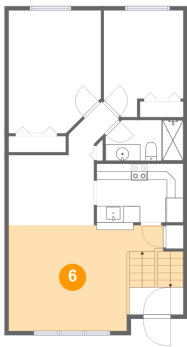


Max Dimensions: 9'5" x 4'11"  
Calculated Area: 44 sq. ft  
Included: Yes

Heated: Yes  
Finished: Yes  
Enclosed: Yes  
Contiguous: Yes  
Permitted: Yes  
Wet space: Yes  
Addition: No  
Conversion: No

21 East Elm Street, Lebanon, Lebanon County, Pennsylvania,  
United States, 17042

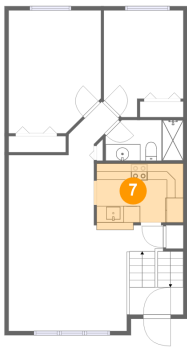
6 Floor 2 - Living Room



Max Dimensions: 18'8" x 12'9"  
Calculated Area: 224 sq. ft  
Included: Yes

Heated: Yes  
Finished: Yes  
Enclosed: Yes  
Contiguous: Yes  
Permitted: Yes  
Wet space: No  
Addition: No  
Conversion: No

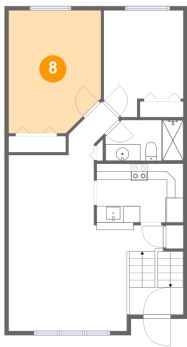
7 Floor 2 - Kitchen



Max Dimensions: 10'6" x 8'0"  
Calculated Area: 79 sq. ft  
Included: Yes

Heated: Yes  
Finished: Yes  
Enclosed: Yes  
Contiguous: Yes  
Permitted: Yes  
Wet space: No  
Addition: No  
Conversion: No

8 Floor 2 - Primary Bedroom

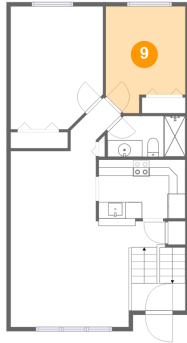


Max Dimensions: 11'1" x 14'10"  
Calculated Area: 156 sq. ft  
Included: Yes

Heated: Yes  
Finished: Yes  
Enclosed: Yes  
Contiguous: Yes  
Permitted: Yes  
Wet space: No  
Addition: No  
Conversion: No

21 East Elm Street, Lebanon, Lebanon County, Pennsylvania,  
United States, 17042

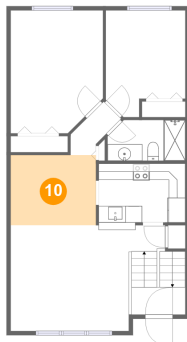
## 9 Floor 2 - Bedroom



Max Dimensions: 9'7" x  
12'11"  
Calculated Area: 109 sq. ft  
Included: Yes

Heated: Yes  
Finished: Yes  
Enclosed: Yes  
Contiguous:  
Yes  
Permitted: Yes  
Wet space: No  
Addition: No  
Conversion: No

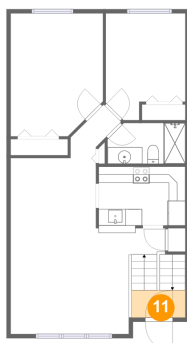
## 10 Floor 2 - Dining Area



Max Dimensions: 10'4" x  
8'5"  
Calculated Area: 87 sq. ft  
Included: Yes

Heated: Yes  
Finished: Yes  
Enclosed: Yes  
Contiguous:  
Yes  
Permitted: Yes  
Wet space: No  
Addition: No  
Conversion: No

## 11 Floor 2 - Foyer

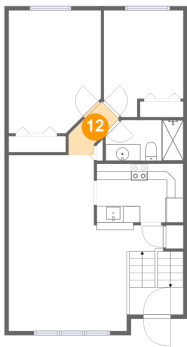


Max Dimensions: 6'6" x 3'3"  
Calculated Area: 21 sq. ft  
Included: Yes

Heated: Yes  
Finished: Yes  
Enclosed: Yes  
Contiguous: Yes  
Permitted: Yes  
Wet space: No  
Addition: No  
Conversion: No

21 East Elm Street, Lebanon, Lebanon County, Pennsylvania,  
United States, 17042

12 Floor 2 - Hall



Max Dimensions: 2'11" x 7'4"  
Calculated Area: 21 sq. ft  
Included: Yes

Heated: Yes  
Finished: Yes  
Enclosed: Yes  
Contiguous: Yes  
Permitted: Yes  
Wet space: No  
Addition: No  
Conversion: No