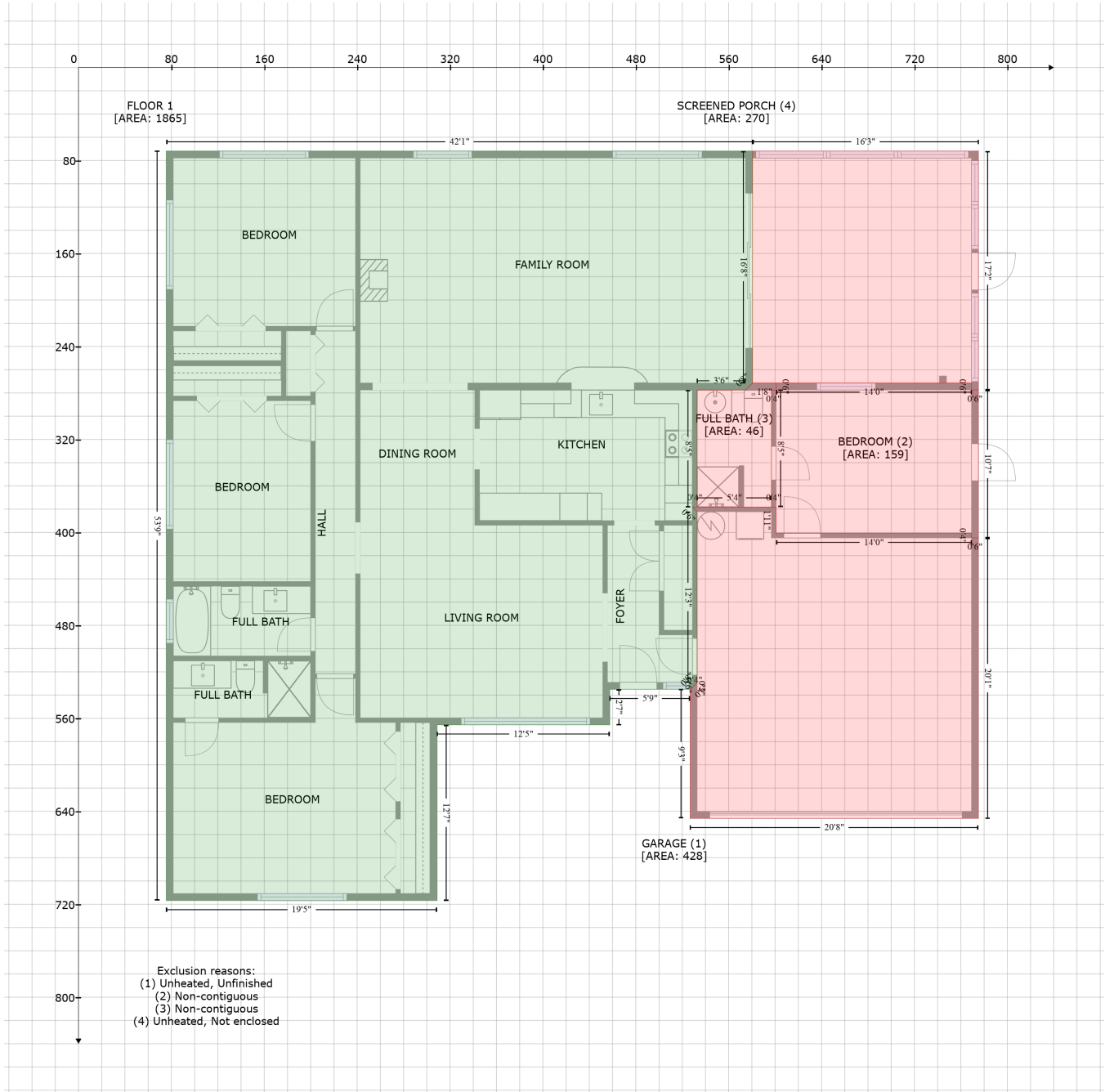


6820 11th Avenue North, Crossroads Area, St. Petersburg, Pinellas County, Florida, United States, 33710

Gross Living Area: 1865 sq. ft



Space	Area (sq. ft)	Calculation <small>Coordinate Polygon Area Algorithm using inches</small>
FLOOR 1 (Living area)	1865	$ \begin{aligned} & -((580.5 + 580.5) * (71.8 - 271.4) + (580.5 + 574.5) * (271.4 - 277.4) + (574.5 + 532.8) * (277.4 - \\ & 277.4) + (532.8 + 532.8) * (277.4 - 378.2) + (532.8 + 528.8) * (378.2 - 378.2) + (528.8 + 532.8) * \\ & (378.2 - 382.2) + (532.8 + 532.8) * (382.2 - 529) + (532.8 + 526.8) * (529 - 535) + (526.8 + 457.6) \\ & * (535 - 535) + (457.6 + 457.6) * (535 - 565.6) + (457.6 + 308.8) * (565.6 - 565.6) + (308.8 + \\ & 308.8) * (565.6 - 716.8) + (308.8 + 75.6) * (716.8 - 716.8) + (75.6 + 75.6) * (716.8 - 71.8) + (75.6 \\ & + 580.5) * (71.8 - 71.8)) * 0.5 * 0.00694 \end{aligned} $

6820 11th Avenue North, Crossroads Area, St. Petersburg, Pinellas County, Florida, United States, 33710

Gross Living Area: 1865 sq. ft

Space	Area (sq. ft)	Calculation <small>Coordinate Polygon Area Algorithm using inches</small>
GARAGE (Non-living area)	428	$-\left((600.8 + 600.8) * (378.2 - 400.7) + (600.8 + 769.1) * (400.7 - 400.7) + (769.1 + 769.1) * (400.7 - 404.7) + (769.1 + 775.1) * (404.7 - 404.7) + (775.1 + 775.1) * (404.7 - 646.1) + (775.1 + 526.8) * (646.1 - 646.1) + (526.8 + 526.8) * (646.1 - 535) + (526.8 + 532.8) * (535 - 529) + (532.8 + 532.8) * (529 - 382.2) + (532.8 + 528.8) * (382.2 - 378.2) + (528.8 + 600.8) * (378.2 - 378.2)\right) * 0.5 * 0.00694$
BEDROOM (Non-living area)	159	$-\left((769.1 + 769.1) * (271.4 - 277.4) + (769.1 + 775.1) * (277.4 - 277.4) + (775.1 + 775.1) * (277.4 - 404.7) + (775.1 + 769.1) * (404.7 - 404.7) + (769.1 + 769.1) * (404.7 - 400.7) + (769.1 + 600.8) * (400.7 - 400.7) + (600.8 + 600.8) * (400.7 - 378.2) + (600.8 + 596.8) * (378.2 - 378.2) + (596.8 + 596.8) * (378.2 - 277.4) + (596.8 + 600.8) * (277.4 - 277.4) + (600.8 + 600.8) * (277.4 - 271.4) + (600.8 + 769.1) * (271.4 - 271.4)\right) * 0.5 * 0.00694$
FULL BATH (Non-living area)	46	$-\left((600.8 + 600.8) * (271.4 - 277.4) + (600.8 + 596.8) * (277.4 - 277.4) + (596.8 + 596.8) * (277.4 - 378.2) + (596.8 + 532.8) * (378.2 - 378.2) + (532.8 + 532.8) * (378.2 - 277.4) + (532.8 + 574.5) * (277.4 - 277.4) + (574.5 + 580.5) * (277.4 - 271.4) + (580.5 + 600.8) * (271.4 - 271.4)\right) * 0.5 * 0.00694$
SCREENED PORCH (Non-living area)	270	$-\left((775.1 + 775.1) * (71.8 - 277.4) + (775.1 + 769.1) * (277.4 - 277.4) + (769.1 + 769.1) * (277.4 - 271.4) + (769.1 + 580.5) * (271.4 - 271.4) + (580.5 + 580.5) * (271.4 - 71.8) + (580.5 + 775.1) * (71.8 - 71.8)\right) * 0.5 * 0.00694$