

Home report

657 Power Dam Road, Rocky Mount, Franklin County, Virginia,
United States, 24151




Total Area: 948 sq. ft


Floor 1: 948 sq. ft

Excluded: Carport 272 sq. ft

Property summary

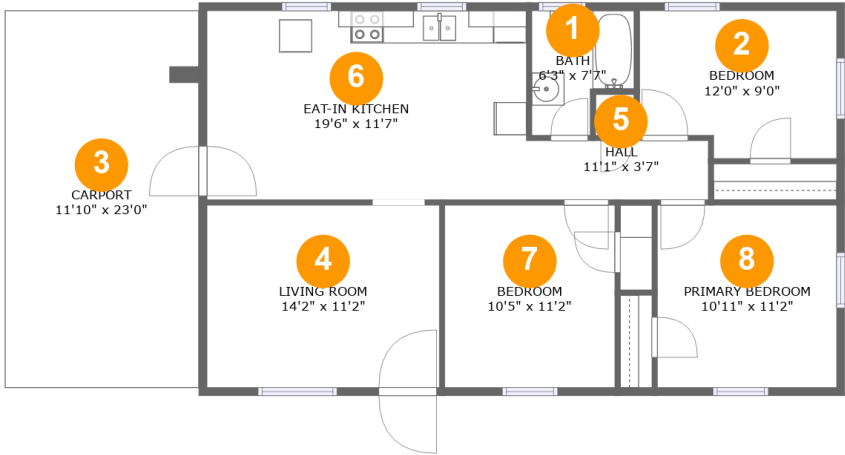
 1 Floors

 3 Bedrooms

 1 Bathrooms

Home report

657 Power Dam Road, Rocky Mount, Franklin County, Virginia,
United States, 24151



Room dimensions

Floor 1

Total:948sqft Excluded: 272sqft

#		Max Dimensions	sqft	Included
1	Bath	6'3" x 7'7"	40 sq. ft	Yes
2	Bedroom	12'0" x 9'0"	102 sq. ft	Yes
3	Carport	11'10" x 23'0"	272 sq. ft	No
4	Living Room	14'2" x 11'2"	158 sq. ft	Yes
5	Hall	11'1" x 3'7"	40 sq. ft	Yes
6	Eat-in Kitchen	19'6" x 11'7"	225 sq. ft	Yes
7	Bedroom	10'5" x 11'2"	116 sq. ft	Yes
8	Primary Bedroom	10'11" x 11'2"	122 sq. ft	Yes

657 Power Dam Road, Rocky Mount, Franklin County, Virginia,
United States, 24151

1 Floor 1 - Bath



Max Dimensions: 6'3" x 7'7"
Calculated Area: 40 sq. ft
Included: Yes

Heated: Yes
Finished: Yes
Enclosed: Yes
Contiguous: Yes
Permitted: Yes
Wet space: Yes
Addition: No
Conversion: No

2 Floor 1 - Bedroom

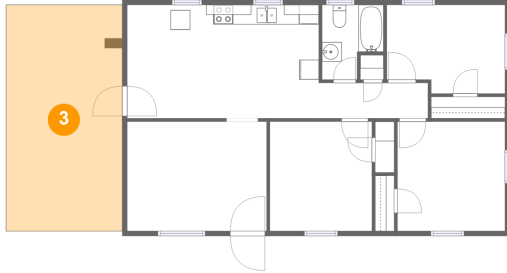


Max Dimensions: 12'0" x 9'0"
Calculated Area: 102 sq. ft
Included: Yes

Heated: Yes
Finished: Yes
Enclosed: Yes
Contiguous: Yes
Permitted: Yes
Wet space: No
Addition: No
Conversion: No

657 Power Dam Road, Rocky Mount, Franklin County, Virginia,
United States, 24151

3 Floor 1 - Carport



Max Dimensions: 11'10" x 23'0"
Calculated Area: 272 sq. ft
Included: No

Heated: No
Finished: Yes
Enclosed: No
Contiguous: Yes
Permitted: Yes
Wet space: No
Addition: No
Conversion: No

4 Floor 1 - Living Room



Max Dimensions: 14'2" x 11'2"
Calculated Area: 158 sq. ft
Included: Yes

Heated: Yes
Finished: Yes
Enclosed: Yes
Contiguous: Yes
Permitted: Yes
Wet space: No
Addition: No
Conversion: No

5 Floor 1 - Hall



Max Dimensions: 11'1" x 3'7"
Calculated Area: 40 sq. ft
Included: Yes

Heated: Yes
Finished: Yes
Enclosed: Yes
Contiguous: Yes
Permitted: Yes
Wet space: No
Addition: No
Conversion: No

657 Power Dam Road, Rocky Mount, Franklin County, Virginia,
United States, 24151

6 Floor 1 - Eat-in Kitchen



Max Dimensions: 19'6" x 11'7"
Calculated Area: 225 sq. ft
Included: Yes

Heated: Yes
Finished: Yes
Enclosed: Yes
Contiguous: Yes
Permitted: Yes
Wet space: No
Addition: No
Conversion: No

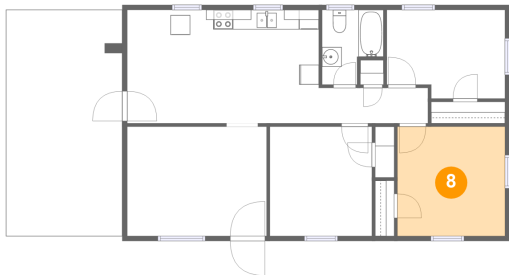
7 Floor 1 - Bedroom



Max Dimensions: 10'5" x 11'2"
Calculated Area: 116 sq. ft
Included: Yes

Heated: Yes
Finished: Yes
Enclosed: Yes
Contiguous: Yes
Permitted: Yes
Wet space: No
Addition: No
Conversion: No

8 Floor 1 - Primary Bedroom



Max Dimensions: 10'11" x 11'2"
Calculated Area: 122 sq. ft
Included: Yes

Heated: Yes
Finished: Yes
Enclosed: Yes
Contiguous: Yes
Permitted: Yes
Wet space: No
Addition: No
Conversion: No