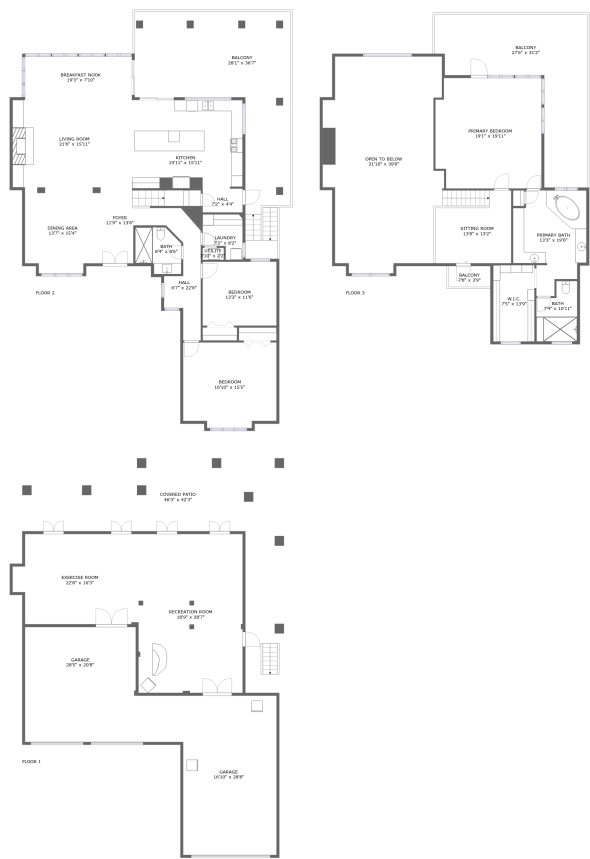


Home report

2016 Gulfview Drive, Sand Bay, Holiday, Pasco County, Florida,  
United States, 34691




**Total GLA: 2989 sq. ft**

Below Ground: 949 sq. ft, Floor 2: 1981 sq. ft, Floor 3: 1008 sq. ft

Excluded: Covered patio 786 sq. ft, Garage 1026 sq. ft, Balcony 1125 sq. ft, Utility 8 sq. ft, Open to below 776 sq. ft

Property summary

 **3** Floors

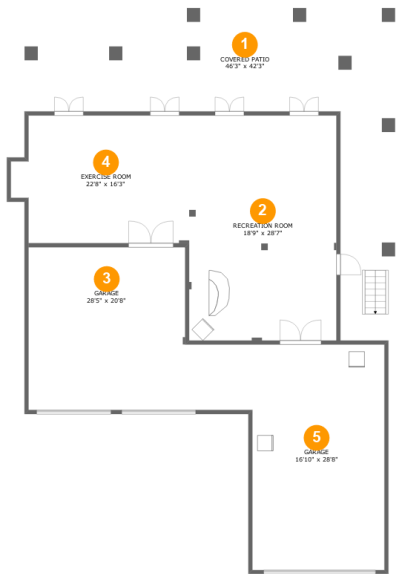
 **3** Bedrooms

 **2** Bathrooms

 **2** Garages

Home report

2016 Gulfview Drive, Sand Bay, Holiday, Pasco County, Florida,  
United States, 34691



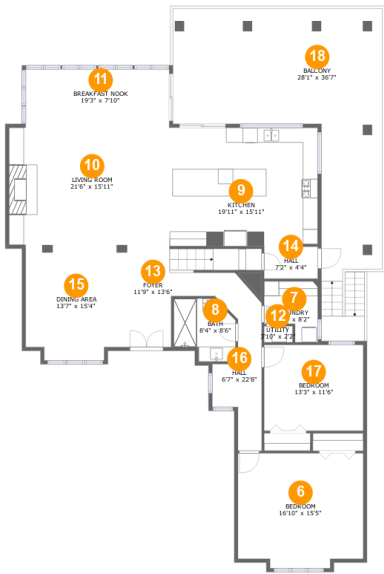
Room dimensions

Floor 1 Below ground Total:949sqft   Excluded: 1812sqft

| # |                 | Max Dimensions | sqft       | Included |
|---|-----------------|----------------|------------|----------|
| 1 | Covered Patio   | 46'3" x 42'3"  | 786 sq. ft | No       |
| 2 | Recreation Room | 18'9" x 28'7"  | 536 sq. ft | Yes      |
| 3 | Garage          | 28'5" x 20'8"  | 483 sq. ft | No       |
| 4 | Exercise Room   | 22'8" x 16'3"  | 342 sq. ft | Yes      |
| 5 | Garage          | 16'10" x 28'8" | 482 sq. ft | No       |

Home report

2016 Gulfview Drive, Sand Bay, Holiday, Pasco County, Florida,  
United States, 34691



Room dimensions

Floor 2 Total:1981sqft    Excluded: 654sqft

| #  |                | Max Dimensions  | sqft       | Included |
|----|----------------|-----------------|------------|----------|
| 6  | Bedroom        | 16'10" x 15'5"  | 248 sq. ft | Yes      |
| 7  | Laundry        | 7'2" x 8'2"     | 49 sq. ft  | Yes      |
| 8  | Bath           | 8'4" x 8'6"     | 59 sq. ft  | Yes      |
| 9  | Kitchen        | 19'11" x 15'11" | 316 sq. ft | Yes      |
| 10 | Living Room    | 21'6" x 15'11"  | 342 sq. ft | Yes      |
| 11 | Breakfast Nook | 19'3" x 7'10"   | 151 sq. ft | Yes      |
| 12 | Utility        | 3'10" x 2'2"    | 8 sq. ft   | No       |
| 13 | Foyer          | 11'9" x 13'6"   | 115 sq. ft | Yes      |
| 14 | Hall           | 7'2" x 4'4"     | 31 sq. ft  | Yes      |
| 15 | Dining Area    | 13'7" x 15'4"   | 198 sq. ft | Yes      |
| 16 | Hall           | 6'7" x 22'8"    | 103 sq. ft | Yes      |

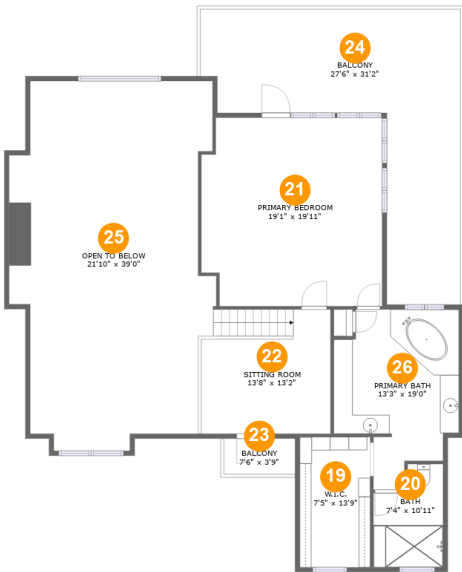
Home report

**2016 Gulfview Drive, Sand Bay, Holiday, Pasco County, Florida,  
United States, 34691**

| #  |         | Max Dimensions | sqft       | Included |
|----|---------|----------------|------------|----------|
| 17 | Bedroom | 13'3" x 11'6"  | 153 sq. ft | Yes      |
| 18 | Balcony | 28'1" x 36'7"  | 646 sq. ft | No       |

Home report

2016 Gulfview Drive, Sand Bay, Holiday, Pasco County, Florida,  
United States, 34691



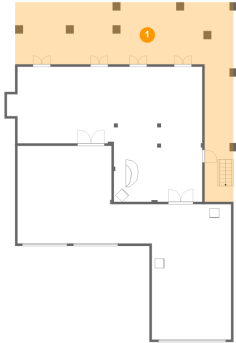
Room dimensions

Floor 3 Total:1008sqft   Excluded: 1255sqft

| #  |                 | Max Dimensions | sqft       | Included |
|----|-----------------|----------------|------------|----------|
| 19 | W.I.C.          | 7'5" x 13'9"   | 102 sq. ft | Yes      |
| 20 | Bath            | 7'4" x 10'11"  | 69 sq. ft  | Yes      |
| 21 | Primary Bedroom | 19'1" x 19'11" | 367 sq. ft | Yes      |
| 22 | Sitting Room    | 13'8" x 13'2"  | 179 sq. ft | Yes      |
| 23 | Balcony         | 7'6" x 3'9"    | 28 sq. ft  | No       |
| 24 | Balcony         | 27'6" x 31'2"  | 451 sq. ft | No       |
| 25 | Open To Below   | 21'10" x 39'0" | 732 sq. ft | No       |
| 26 | Primary Bath    | 13'3" x 19'0"  | 196 sq. ft | Yes      |

2016 Gulfview Drive, Sand Bay, Holiday, Pasco County, Florida,  
United States, 34691

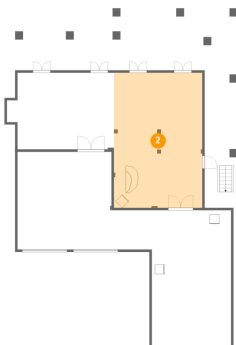
## 1 Floor 1 - Covered Patio



Max Dimensions: 46'3" x  
42'3"  
Calculated Area: 786 sq. ft  
Included: No

Heated: No  
Finished: Yes  
Enclosed: No  
Contiguous:  
Yes  
Permitted: Yes  
Wet space: No  
Addition: No  
Conversion: No

## 2 Floor 1 - Recreation Room



Max Dimensions: 18'9" x  
28'7"  
Calculated Area: 536 sq. ft  
Included: Yes

Heated: Yes  
Finished: Yes  
Enclosed: Yes  
Contiguous:  
Yes  
Permitted: Yes  
Wet space: No  
Addition: No  
Conversion: No

3 Floor 1 - Garage



Max Dimensions: 28'5" x 20'8"  
Calculated Area: 483 sq. ft  
Included: No

Heated: No  
Finished: No  
Enclosed: Yes  
Contiguous: Yes  
Permitted: Yes  
Wet space: No  
Addition: No  
Conversion: No

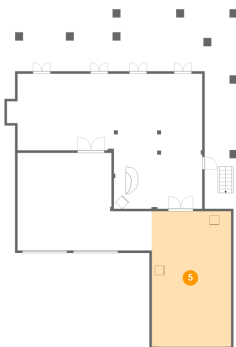
4 Floor 1 - Exercise Room



Max Dimensions: 22'8" x 16'3"  
Calculated Area: 342 sq. ft  
Included: Yes

Heated: Yes  
Finished: Yes  
Enclosed: Yes  
Contiguous: Yes  
Permitted: Yes  
Wet space: No  
Addition: No  
Conversion: No

5 Floor 1 - Garage



Max Dimensions: 16'10" x 28'8"  
Calculated Area: 482 sq. ft  
Included: No

Heated: No  
Finished: No  
Enclosed: Yes  
Contiguous: Yes  
Permitted: Yes  
Wet space: No  
Addition: No  
Conversion: No

2016 Gulfview Drive, Sand Bay, Holiday, Pasco County, Florida,  
United States, 34691

## 6 Floor 2 - Bedroom



Max Dimensions: 16'10" x 15'5"  
Calculated Area: 248 sq. ft  
Included: Yes

Heated: Yes  
Finished: Yes  
Enclosed: Yes  
Contiguous: Yes  
Permitted: Yes  
Wet space: No  
Addition: No  
Conversion: No

## 7 Floor 2 - Laundry



Max Dimensions: 7'2" x 8'2"  
Calculated Area: 49 sq. ft  
Included: Yes

Heated: Yes  
Finished: Yes  
Enclosed: Yes  
Contiguous: Yes  
Permitted: Yes  
Wet space: No  
Addition: No  
Conversion: No

## 8 Floor 2 - Bath



Max Dimensions: 8'4" x 8'6"  
Calculated Area: 59 sq. ft  
Included: Yes

Heated: Yes  
Finished: Yes  
Enclosed: Yes  
Contiguous: Yes  
Permitted: Yes  
Wet space: Yes  
Addition: No  
Conversion: No



2016 Gulfview Drive, Sand Bay, Holiday, Pasco County, Florida,  
United States, 34691

## 9 Floor 2 - Kitchen



Max Dimensions: 19'11" x 15'11"  
Calculated Area: 316 sq. ft  
Included: Yes

Heated: Yes  
Finished: Yes  
Enclosed: Yes  
Contiguous: Yes  
Permitted: Yes  
Wet space: No  
Addition: No  
Conversion: No

## 10 Floor 2 - Living Room



Max Dimensions: 21'6" x 15'11"  
Calculated Area: 342 sq. ft  
Included: Yes

Heated: Yes  
Finished: Yes  
Enclosed: Yes  
Contiguous: Yes  
Permitted: Yes  
Wet space: No  
Addition: No  
Conversion: No

## 11 Floor 2 - Breakfast Nook



Max Dimensions: 19'3" x 7'10"  
Calculated Area: 151 sq. ft  
Included: Yes

Heated: Yes  
Finished: Yes  
Enclosed: Yes  
Contiguous: Yes  
Permitted: Yes  
Wet space: No  
Addition: No  
Conversion: No

2016 Gulfview Drive, Sand Bay, Holiday, Pasco County, Florida,  
United States, 34691

## 12 Floor 2 - Utility



Max Dimensions: 3'10" x 2'2"  
Calculated Area: 8 sq. ft  
Included: No

Heated: Yes  
Finished: No  
Enclosed: Yes  
Contiguous: Yes  
Permitted: Yes  
Wet space: No  
Addition: No  
Conversion: No

## 13 Floor 2 - Foyer



Max Dimensions: 11'9" x 13'6"  
Calculated Area: 115 sq. ft  
Included: Yes

Heated: Yes  
Finished: Yes  
Enclosed: Yes  
Contiguous: Yes  
Permitted: Yes  
Wet space: No  
Addition: No  
Conversion: No

## 14 Floor 2 - Hall



Max Dimensions: 7'2" x 4'4"  
Calculated Area: 31 sq. ft  
Included: Yes

Heated: Yes  
Finished: Yes  
Enclosed: Yes  
Contiguous: Yes  
Permitted: Yes  
Wet space: No  
Addition: No  
Conversion: No

2016 Gulfview Drive, Sand Bay, Holiday, Pasco County, Florida,  
United States, 34691

## 15 Floor 2 - Dining Area



Max Dimensions: 13'7" x 15'4"  
Calculated Area: 198 sq. ft  
Included: Yes

Heated: Yes  
Finished: Yes  
Enclosed: Yes  
Contiguous: Yes  
Permitted: Yes  
Wet space: No  
Addition: No  
Conversion: No

## 16 Floor 2 - Hall



Max Dimensions: 6'7" x 22'8"  
Calculated Area: 103 sq. ft  
Included: Yes

Heated: Yes  
Finished: Yes  
Enclosed: Yes  
Contiguous: Yes  
Permitted: Yes  
Wet space: No  
Addition: No  
Conversion: No

## 17 Floor 2 - Bedroom



Max Dimensions: 13'3" x 11'6"  
Calculated Area: 153 sq. ft  
Included: Yes

Heated: Yes  
Finished: Yes  
Enclosed: Yes  
Contiguous: Yes  
Permitted: Yes  
Wet space: No  
Addition: No  
Conversion: No

2016 Gulfview Drive, Sand Bay, Holiday, Pasco County, Florida,  
United States, 34691

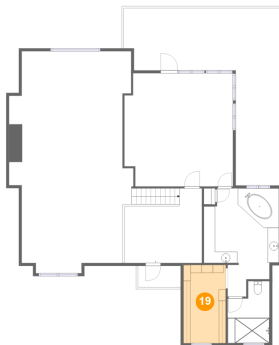
## 18 Floor 2 - Balcony



Max Dimensions: 28'1" x 36'7"  
Calculated Area: 646 sq. ft  
Included: No

Heated: No  
Finished: Yes  
Enclosed: No  
Contiguous: Yes  
Permitted: Yes  
Wet space: No  
Addition: No  
Conversion: No

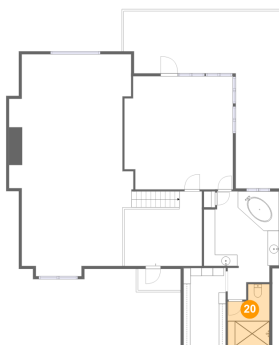
## 19 Floor 3 - W.I.C.



Max Dimensions: 7'5" x 13'9"  
Calculated Area: 102 sq. ft  
Included: Yes

Heated: Yes  
Finished: Yes  
Enclosed: Yes  
Contiguous: Yes  
Permitted: Yes  
Wet space: No  
Addition: No  
Conversion: No

## 20 Floor 3 - Bath



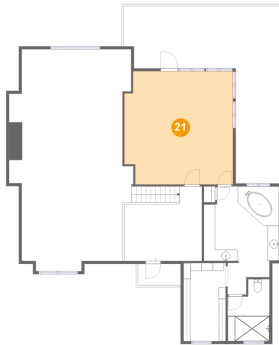
Max Dimensions: 7'4" x 10'11"  
Calculated Area: 69 sq. ft  
Included: Yes

Heated: Yes  
Finished: Yes  
Enclosed: Yes  
Contiguous: Yes  
Permitted: Yes  
Wet space: Yes  
Addition: No  
Conversion: No

2016 Gulfview Drive, Sand Bay, Holiday, Pasco County, Florida,  
United States, 34691

### 21 Floor 3 - Primary Bedroom

---

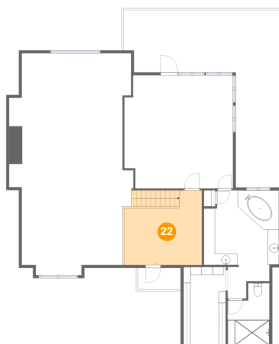


Max Dimensions: 19'1" x 19'11"  
Calculated Area: 367 sq. ft  
Included: Yes

Heated: Yes  
Finished: Yes  
Enclosed: Yes  
Contiguous: Yes  
Permitted: Yes  
Wet space: No  
Addition: No  
Conversion: No

### 22 Floor 3 - Sitting Room

---

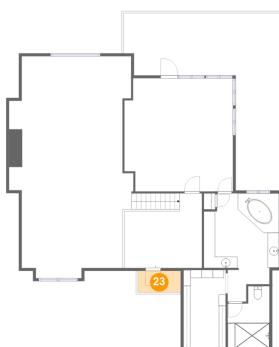


Max Dimensions: 13'8" x 13'2"  
Calculated Area: 179 sq. ft  
Included: Yes

Heated: Yes  
Finished: Yes  
Enclosed: Yes  
Contiguous: Yes  
Permitted: Yes  
Wet space: No  
Addition: No  
Conversion: No

### 23 Floor 3 - Balcony

---

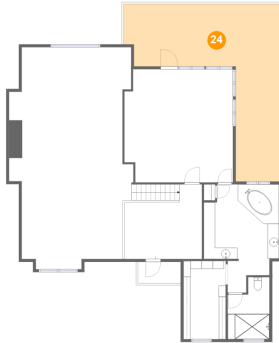


Max Dimensions: 7'6" x 3'9"  
Calculated Area: 28 sq. ft  
Included: No

Heated: No  
Finished: Yes  
Enclosed: No  
Contiguous: Yes  
Permitted: Yes  
Wet space: No  
Addition: No  
Conversion: No

2016 Gulfview Drive, Sand Bay, Holiday, Pasco County, Florida,  
United States, 34691

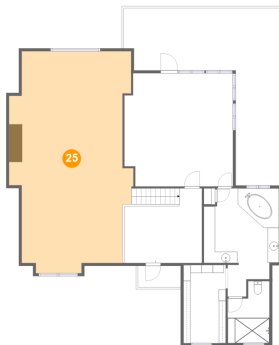
### 24 Floor 3 - Balcony



Max Dimensions: 27'6" x 31'2"  
Calculated Area: 451 sq. ft  
Included: No

Heated: No  
Finished: Yes  
Enclosed: No  
Contiguous: Yes  
Permitted: Yes  
Wet space: No  
Addition: No  
Conversion: No

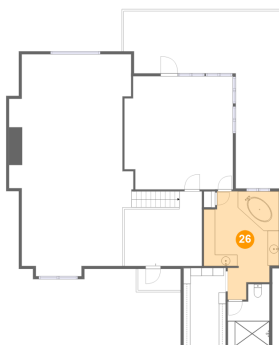
### 25 Floor 3 - Open To Below



Max Dimensions: 21'10" x 39'0"  
Calculated Area: 732 sq. ft  
Included: No

Heated: No  
Finished: No  
Enclosed: No  
Contiguous: Yes  
Permitted: No  
Wet space: No  
Addition: No  
Conversion: No

### 26 Floor 3 - Primary Bath



Max Dimensions: 13'3" x 19'0"  
Calculated Area: 196 sq. ft  
Included: Yes

Heated: Yes  
Finished: Yes  
Enclosed: Yes  
Contiguous: Yes  
Permitted: Yes  
Wet space: Yes  
Addition: No  
Conversion: No