


Home report

842 Paint Bank Road, Quail Crossing, Salem, Roanoke County, Virginia, United States, 24153



Property summary


 **2** Garages

 **4** Bedrooms

 **4** Bathrooms

 **0** Half baths

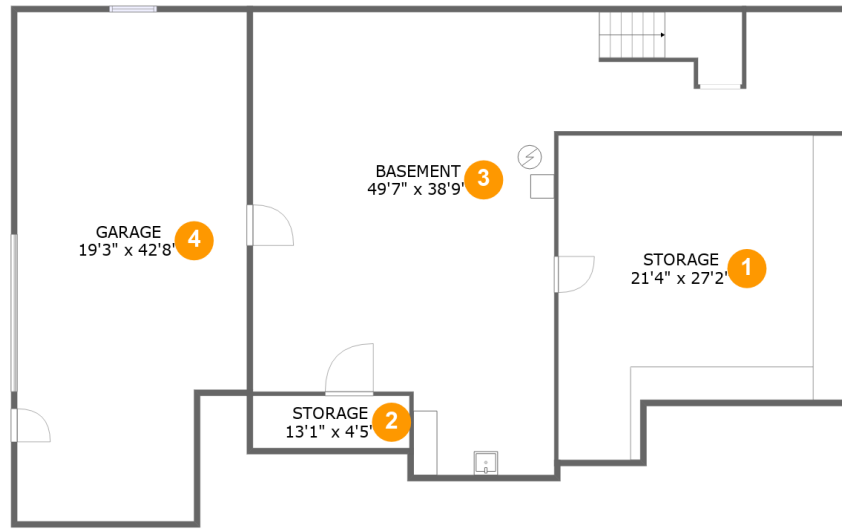
 **2** Floors

 **3,327** Gross living area sqft

 **8,714** Total sqft

Home report

842 Paint Bank Road, Quail Crossing, Salem, Roanoke County, Virginia, United States, 24153



Room dimensions

Floor 1

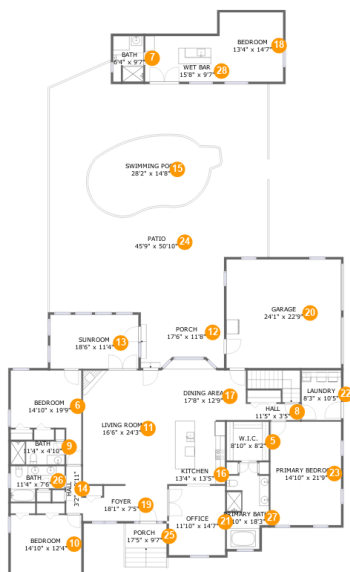
Total sqft: 2685

Living area: 0

#		Dimensions	sqft	Counted as living area
1	Storage	21'4" x 27'2"	566 sq. ft	No
2	Storage	13'1" x 4'5"	58 sq. ft	No
3	Basement	49'7" x 38'9"	1122 sq. ft	No
4	Garage	19'3" x 42'8"	772 sq. ft	No

Home report

842 Paint Bank Road, Quail Crossing, Salem, Roanoke County, Virginia, United States, 24153



Room dimensions

Floor 2

Total sqft: 6029 Living area: 3327

#		Dimensions	sqft	Counted as living area
5	W.I.C.	8'10" x 8'2"	72 sq. ft	Yes
6	Bedroom	14'10" x 19'9"	203 sq. ft	Yes
7	Bath	6'4" x 9'7"	60 sq. ft	Yes
8	Hall	11'5" x 3'5"	39 sq. ft	Yes
9	Bath	11'4" x 4'10"	55 sq. ft	Yes
10	Bedroom	14'10" x 12'4"	183 sq. ft	Yes
11	Living Room	16'6" x 24'3"	397 sq. ft	Yes
12	Porch	17'6" x 11'8"	182 sq. ft	No
13	Sunroom	18'6" x 11'4"	210 sq. ft	Yes
14	Hall	3'2" x 9'11"	32 sq. ft	Yes
15	Swimming Pool	28'2" x 14'8"	339 sq. ft	No

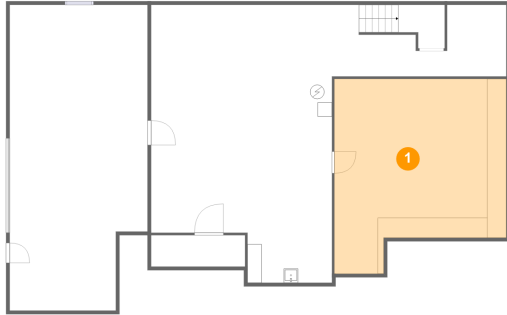
Home report

**842 Paint Bank Road, Quail Crossing, Salem, Roanoke County,
Virginia, United States, 24153**

#		Dimensions	sqft	Counted as living area
16	Kitchen	13'4" x 13'5"	179 sq. ft	Yes
17	Dining Area	17'8" x 12'9"	205 sq. ft	Yes
18	Bedroom	13'4" x 14'7"	194 sq. ft	Yes
19	Foyer	18'1" x 7'5"	121 sq. ft	Yes
20	Garage	24'1" x 22'9"	548 sq. ft	No
21	Office	11'10" x 14'7"	172 sq. ft	Yes
22	Laundry	8'3" x 10'5"	86 sq. ft	Yes
23	Primary Bedroom	14'10" x 21'9"	322 sq. ft	Yes
24	Patio	45'9" x 50'10"	2112 sq. ft	No
25	Porch	17'5" x 9'7"	163 sq. ft	No
26	Bath	11'4" x 7'6"	67 sq. ft	Yes
27	Primary Bath	8'10" x 18'3"	135 sq. ft	Yes
28	Wet Bar	15'8" x 9'7"	150 sq. ft	Yes

842 Paint Bank Road, Quail Crossing, Salem, Roanoke County, Virginia, United States, 24153

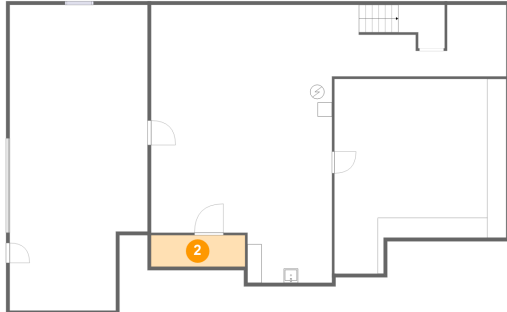
1 Floor 1 - Storage



Dimensions: 21'4" x 27'2"
Area: 566 sq. ft
Counted as living area: No

Heated: No
Finished: No
Enclosed: No
Contiguous: Yes
Permitted: Yes
Wet space: No
Addition: No
Conversion: No

2 Floor 1 - Storage

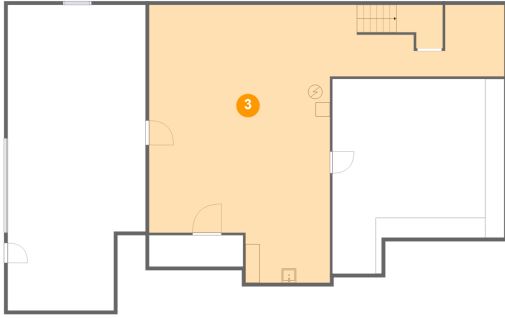


Dimensions: 13'1" x 4'5"
Area: 58 sq. ft
Counted as living area: No

Heated: No
Finished: No
Enclosed: No
Contiguous: Yes
Permitted: Yes
Wet space: No
Addition: No
Conversion: No

842 Paint Bank Road, Quail Crossing, Salem, Roanoke County, Virginia, United States, 24153

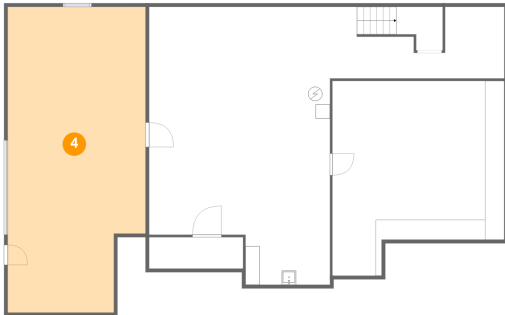
3 Floor 1 - Basement



Dimensions: 49'7" x 38'9"
Area: 1122 sq. ft
Counted as living area: No

Heated: Yes
Finished: No
Enclosed: Yes
Contiguous: Yes
Permitted: Yes
Wet space: No
Addition: No
Conversion: No

4 Floor 1 - Garage



Dimensions: 19'3" x 42'8"
Area: 772 sq. ft
Counted as living area: No

Heated: No
Finished: No
Enclosed: Yes
Contiguous: Yes
Permitted: Yes
Wet space: No
Addition: No
Conversion: No

5 Floor 2 - W.I.C.



Dimensions: 8'10" x 8'2"
Area: 72 sq. ft
Counted as living area: Yes

Heated: Yes
Finished: Yes
Enclosed: Yes
Contiguous: Yes
Permitted: Yes
Wet space: No
Addition: No
Conversion: No

842 Paint Bank Road, Quail Crossing, Salem, Roanoke County, Virginia, United States, 24153

6 Floor 2 - Bedroom



Dimensions: 14'10" x 19'9"
Area: 203 sq. ft
Counted as living area: Yes

Heated: Yes
Finished: Yes
Enclosed: Yes
Contiguous: Yes
Permitted: Yes
Wet space: No
Addition: No
Conversion: No

7 Floor 2 - Bath



Dimensions: 6'4" x 9'7"
Area: 60 sq. ft
Counted as living area: Yes

Heated: Yes
Finished: Yes
Enclosed: Yes
Contiguous: Yes
Permitted: Yes
Wet space: Yes
Addition: No
Conversion: No

8 Floor 2 - Hall



Dimensions: 11'5" x 3'5"
Area: 39 sq. ft
Counted as living area: Yes

Heated: Yes
Finished: Yes
Enclosed: Yes
Contiguous: Yes
Permitted: Yes
Wet space: No
Addition: No
Conversion: No

842 Paint Bank Road, Quail Crossing, Salem, Roanoke County, Virginia, United States, 24153

9 Floor 2 - Bath



Dimensions: 11'4" x 4'10"
Area: 55 sq. ft
Counted as living area: Yes

Heated: Yes
Finished: Yes
Enclosed: Yes
Contiguous: Yes
Permitted: Yes
Wet space: Yes
Addition: No
Conversion: No

10 Floor 2 - Bedroom



Dimensions: 14'10" x 12'4"
Area: 183 sq. ft
Counted as living area: Yes

Heated: Yes
Finished: Yes
Enclosed: Yes
Contiguous: Yes
Permitted: Yes
Wet space: No
Addition: No
Conversion: No

11 Floor 2 - Living Room



Dimensions: 16'6" x 24'3"
Area: 397 sq. ft
Counted as living area: Yes

Heated: Yes
Finished: Yes
Enclosed: Yes
Contiguous: Yes
Permitted: Yes
Wet space: No
Addition: No
Conversion: No

842 Paint Bank Road, Quail Crossing, Salem, Roanoke County, Virginia, United States, 24153

12 Floor 2 - Porch



Dimensions: 17'6" x 11'8"
Area: 182 sq. ft
Counted as living area: No

Heated: No
Finished: Yes
Enclosed: No
Contiguous: Yes
Permitted: Yes
Wet space: No
Addition: No
Conversion: No

13 Floor 2 - Sunroom



Dimensions: 18'6" x 11'4"
Area: 210 sq. ft
Counted as living area: Yes

Heated: Yes
Finished: Yes
Enclosed: Yes
Contiguous: Yes
Permitted: Yes
Wet space: No
Addition: No
Conversion: No

14 Floor 2 - Hall



Dimensions: 3'2" x 9'11"
Area: 32 sq. ft
Counted as living area: Yes

Heated: Yes
Finished: Yes
Enclosed: Yes
Contiguous: Yes
Permitted: Yes
Wet space: No
Addition: No
Conversion: No

842 Paint Bank Road, Quail Crossing, Salem, Roanoke County, Virginia, United States, 24153

15 Floor 2 - Swimming Pool



Dimensions: 28'2" x 14'8"
Area: 339 sq. ft
Counted as living area: No

Heated: No
Finished: No
Enclosed: No
Contiguous: Yes
Permitted: No
Wet space: No
Addition: No
Conversion: No

16 Floor 2 - Kitchen



Dimensions: 13'4" x 13'5"
Area: 179 sq. ft
Counted as living area: Yes

Heated: Yes
Finished: Yes
Enclosed: Yes
Contiguous: Yes
Permitted: Yes
Wet space: No
Addition: No
Conversion: No

17 Floor 2 - Dining Area



Dimensions: 17'8" x 12'9"
Area: 205 sq. ft
Counted as living area: Yes

Heated: Yes
Finished: Yes
Enclosed: Yes
Contiguous: Yes
Permitted: Yes
Wet space: No
Addition: No
Conversion: No

842 Paint Bank Road, Quail Crossing, Salem, Roanoke County, Virginia, United States, 24153

18 Floor 2 - Bedroom



Dimensions: 13'4" x 14'7"
Area: 194 sq. ft
Counted as living area: Yes

Heated: Yes
Finished: Yes
Enclosed: Yes
Contiguous: Yes
Permitted: Yes
Wet space: No
Addition: No
Conversion: No

19 Floor 2 - Foyer



Dimensions: 18'1" x 7'5"
Area: 121 sq. ft
Counted as living area: Yes

Heated: Yes
Finished: Yes
Enclosed: Yes
Contiguous: Yes
Permitted: Yes
Wet space: No
Addition: No
Conversion: No

20 Floor 2 - Garage



Dimensions: 24'1" x 22'9"
Area: 548 sq. ft
Counted as living area: No

Heated: No
Finished: No
Enclosed: Yes
Contiguous: Yes
Permitted: Yes
Wet space: No
Addition: No
Conversion: No

842 Paint Bank Road, Quail Crossing, Salem, Roanoke County, Virginia, United States, 24153

21 Floor 2 - Office



Dimensions: 11'10" x 14'7"
Area: 172 sq. ft
Counted as living area: Yes

Heated: Yes
Finished: Yes
Enclosed: Yes
Contiguous: Yes
Permitted: Yes
Wet space: No
Addition: No
Conversion: No

22 Floor 2 - Laundry



Dimensions: 8'3" x 10'5"
Area: 86 sq. ft
Counted as living area: Yes

Heated: Yes
Finished: Yes
Enclosed: Yes
Contiguous: Yes
Permitted: Yes
Wet space: No
Addition: No
Conversion: No

23 Floor 2 - Primary Bedroom



Dimensions: 14'10" x 21'9"
Area: 322 sq. ft
Counted as living area: Yes

Heated: Yes
Finished: Yes
Enclosed: Yes
Contiguous: Yes
Permitted: Yes
Wet space: No
Addition: No
Conversion: No

842 Paint Bank Road, Quail Crossing, Salem, Roanoke County, Virginia, United States, 24153

24 Floor 2 - Patio



Dimensions: 45'9" x 50'10"
Area: 2112 sq. ft
Counted as living area: No

Heated: No
Finished: Yes
Enclosed: No
Contiguous: Yes
Permitted: Yes
Wet space: No
Addition: No
Conversion: No

25 Floor 2 - Porch



Dimensions: 17'5" x 9'7"
Area: 163 sq. ft
Counted as living area: No

Heated: No
Finished: Yes
Enclosed: No
Contiguous: Yes
Permitted: Yes
Wet space: No
Addition: No
Conversion: No

26 Floor 2 - Bath



Dimensions: 11'4" x 7'6"
Area: 67 sq. ft
Counted as living area: Yes

Heated: Yes
Finished: Yes
Enclosed: Yes
Contiguous: Yes
Permitted: Yes
Wet space: Yes
Addition: No
Conversion: No

842 Paint Bank Road, Quail Crossing, Salem, Roanoke County, Virginia, United States, 24153

27 Floor 2 - Primary Bath



Dimensions: 8'10" x 18'3"
Area: 135 sq. ft
Counted as living area: Yes

Heated: Yes
Finished: Yes
Enclosed: Yes
Contiguous: Yes
Permitted: Yes
Wet space: Yes
Addition: No
Conversion: No

28 Floor 2 - Wet Bar



Dimensions: 15'8" x 9'7"
Area: 150 sq. ft
Counted as living area: Yes

Heated: Yes
Finished: Yes
Enclosed: Yes
Contiguous: Yes
Permitted: Yes
Wet space: No
Addition: No
Conversion: No