

Home report

3050 Zephyr Road, Kechter Farm, Fort Collins, Larimer County,
Colorado, United States, 80528




Total Area: 3244 sq. ft
Below Ground: 1086 sq. ft, Floor 2: 2158 sq. ft
Excluded: Utility 92 sq. ft, Storage 602 sq. ft, Garage 451 sq. ft, Outdoor Porch 144 sq. ft,
Outdoor Patio Covered 769 sq. ft, Fireplace 15 sq. ft

Property summary

 **2** Floors

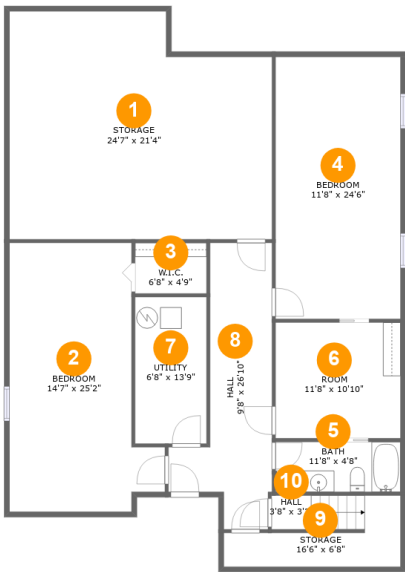
 **4** Bedrooms

 **3** Bathrooms

 **1** Garages

Home report

3050 Zephyr Road, Kechter Farm, Fort Collins, Larimer County,
Colorado, United States, 80528



Room dimensions

Floor 1 Below ground

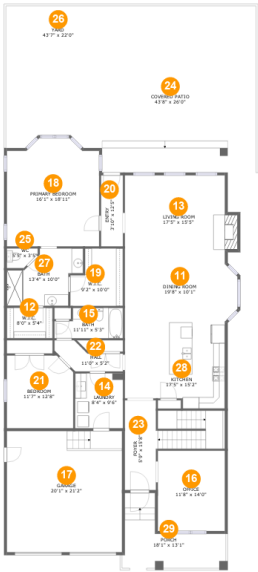
Total:1086sqft

Excluded: 694sqft

#		Max Dimensions	sqft	Included
1	Storage	24'7" x 21'4"	481 sq. ft	No
2	Bedroom	14'7" x 25'2"	300 sq. ft	Yes
3	W.I.C.	6'8" x 4'9"	32 sq. ft	Yes
4	Bedroom	11'8" x 24'6"	287 sq. ft	Yes
5	Bath	11'8" x 4'8"	50 sq. ft	Yes
6	Room	11'8" x 10'10"	127 sq. ft	Yes
7	Utility	6'8" x 13'9"	92 sq. ft	No
8	Hall	9'8" x 26'10"	166 sq. ft	Yes
9	Storage	16'6" x 6'8"	80 sq. ft	No
10	Hall	3'8" x 3'2"	12 sq. ft	Yes

Home report

3050 Zephyr Road, Kechter Farm, Fort Collins, Larimer County, Colorado, United States, 80528



Room dimensions

Floor 2 Total:2158sqft Excluded: 1379sqft

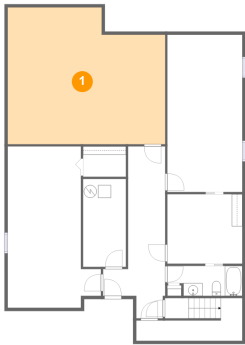
#		Max Dimensions	sqft	Included
11	Dining Room	19'8" x 10'1"	193 sq. ft	Yes
12	W.I.C.	8'0" x 5'4"	42 sq. ft	Yes
13	Living Room	17'5" x 15'5"	283 sq. ft	Yes
14	Laundry	8'4" x 9'6"	80 sq. ft	Yes
15	Bath	11'11" x 5'3"	56 sq. ft	Yes
16	Office	11'8" x 14'0"	164 sq. ft	Yes
17	Garage	20'1" x 21'2"	424 sq. ft	No
18	Primary Bedroom	16'1" x 18'11"	285 sq. ft	Yes
19	W.I.C.	9'2" x 10'0"	80 sq. ft	Yes
20	Entry	3'10" x 12'5"	47 sq. ft	Yes
21	Bedroom	11'7" x 12'8"	143 sq. ft	Yes

Home report

**3050 Zephyr Road, Kechter Farm, Fort Collins, Larimer County,
Colorado, United States, 80528**

#		Max Dimensions	sqft	Included
22	Hall	11'0" x 5'2"	41 sq. ft	Yes
23	Foyer	5'9" x 15'8"	161 sq. ft	Yes
24	Covered Patio	43'8" x 26'0"	769 sq. ft	No
25	WC	5'5" x 3'5"	16 sq. ft	Yes
26	Yard	43'7" x 22'0"	410 sq. ft	No
27	Bath	13'4" x 10'0"	101 sq. ft	Yes
28	Kitchen	17'5" x 15'2"	247 sq. ft	Yes
29	Porch	18'1" x 13'1"	144 sq. ft	No

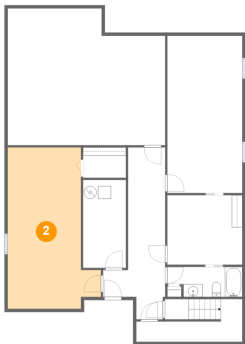
1 Floor 1 - Storage



Max Dimensions: 24'7" x 21'4"
Calculated Area: 481 sq. ft
Included: No

Heated: No
Finished: No
Enclosed: No
Contiguous: Yes
Permitted: Yes
Wet space: No
Addition: No
Conversion: No

2 Floor 1 - Bedroom

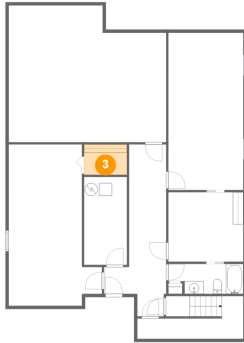


Max Dimensions: 14'7" x 25'2"
Calculated Area: 300 sq. ft
Included: Yes

Heated: Yes
Finished: Yes
Enclosed: Yes
Contiguous: Yes
Permitted: Yes
Wet space: No
Addition: No
Conversion: No

3050 Zephyr Road, Kechter Farm, Fort Collins, Larimer County,
Colorado, United States, 80528

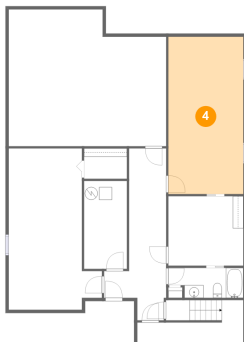
3 Floor 1 - W.I.C.



Max Dimensions: 6'8" x 4'9"
Calculated Area: 32 sq. ft
Included: Yes

Heated: Yes
Finished: Yes
Enclosed: Yes
Contiguous: Yes
Permitted: Yes
Wet space: No
Addition: No
Conversion: No

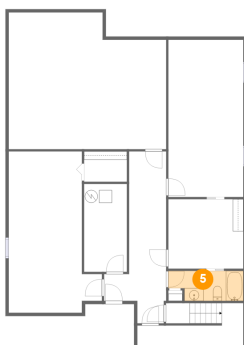
4 Floor 1 - Bedroom



Max Dimensions: 11'8" x 24'6"
Calculated Area: 287 sq. ft
Included: Yes

Heated: Yes
Finished: Yes
Enclosed: Yes
Contiguous: Yes
Permitted: Yes
Wet space: No
Addition: No
Conversion: No

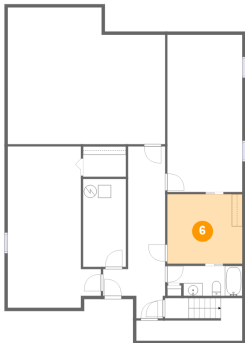
5 Floor 1 - Bath



Max Dimensions: 11'8" x 4'8"
Calculated Area: 50 sq. ft
Included: Yes

Heated: Yes
Finished: Yes
Enclosed: Yes
Contiguous: Yes
Permitted: Yes
Wet space: Yes
Addition: No
Conversion: No

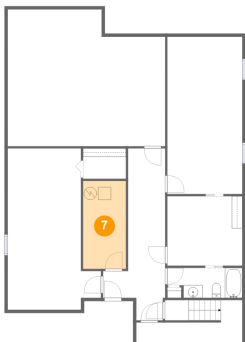
6 Floor 1 - Room



Max Dimensions: 11'8" x 10'10"
Calculated Area: 127 sq. ft
Included: Yes

Heated: Yes
Finished: Yes
Enclosed: Yes
Contiguous: Yes
Permitted: Yes
Wet space: No
Addition: No
Conversion: No

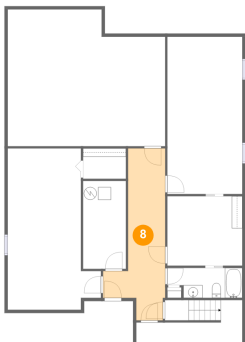
7 Floor 1 - Utility



Max Dimensions: 6'8" x 13'9"
Calculated Area: 92 sq. ft
Included: No

Heated: Yes
Finished: No
Enclosed: Yes
Contiguous: Yes
Permitted: Yes
Wet space: No
Addition: No
Conversion: No

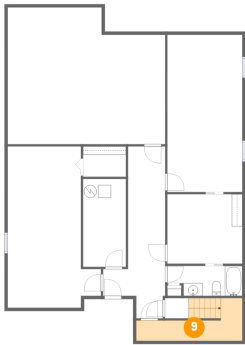
8 Floor 1 - Hall



Max Dimensions: 9'8" x 26'10"
Calculated Area: 166 sq. ft
Included: Yes

Heated: Yes
Finished: Yes
Enclosed: Yes
Contiguous: Yes
Permitted: Yes
Wet space: No
Addition: No
Conversion: No

9 Floor 1 - Storage



Max Dimensions: 16'6" x 6'8"
Calculated Area: 80 sq. ft
Included: No

Heated: No
Finished: No
Enclosed: No
Contiguous: Yes
Permitted: Yes
Wet space: No
Addition: No
Conversion: No

10 Floor 1 - Hall



Max Dimensions: 3'8" x 3'2"
Calculated Area: 12 sq. ft
Included: Yes

Heated: Yes
Finished: Yes
Enclosed: Yes
Contiguous: Yes
Permitted: Yes
Wet space: No
Addition: No
Conversion: No

11 Floor 2 - Dining Room



Max Dimensions: 19'8" x 10'1"
Calculated Area: 193 sq. ft
Included: Yes

Heated: Yes
Finished: Yes
Enclosed: Yes
Contiguous: Yes
Permitted: Yes
Wet space: No
Addition: No
Conversion: No

3050 Zephyr Road, Kechter Farm, Fort Collins, Larimer County,
Colorado, United States, 80528

12 Floor 2 - W.I.C.



Max Dimensions: 8'0" x 5'4"
Calculated Area: 42 sq. ft
Included: Yes

Heated: Yes
Finished: Yes
Enclosed: Yes
Contiguous: Yes
Permitted: Yes
Wet space: No
Addition: No
Conversion: No

13 Floor 2 - Living Room



Max Dimensions: 17'5" x 15'5"
Calculated Area: 283 sq. ft
Included: Yes

Heated: Yes
Finished: Yes
Enclosed: Yes
Contiguous: Yes
Permitted: Yes
Wet space: No
Addition: No
Conversion: No

14 Floor 2 - Laundry



Max Dimensions: 8'4" x 9'6"
Calculated Area: 80 sq. ft
Included: Yes

Heated: Yes
Finished: Yes
Enclosed: Yes
Contiguous: Yes
Permitted: Yes
Wet space: No
Addition: No
Conversion: No

15 Floor 2 - Bath



Max Dimensions: 11'11" x 5'3"
Calculated Area: 56 sq. ft
Included: Yes

Heated: Yes
Finished: Yes
Enclosed: Yes
Contiguous: Yes
Permitted: Yes
Wet space: Yes
Addition: No
Conversion: No

16 Floor 2 - Office



Max Dimensions: 11'8" x 14'0"
Calculated Area: 164 sq. ft
Included: Yes

Heated: Yes
Finished: Yes
Enclosed: Yes
Contiguous: Yes
Permitted: Yes
Wet space: No
Addition: No
Conversion: No

17 Floor 2 - Garage



Max Dimensions: 20'1" x 21'2"
Calculated Area: 424 sq. ft
Included: No

Heated: No
Finished: No
Enclosed: Yes
Contiguous: Yes
Permitted: Yes
Wet space: No
Addition: No
Conversion: No

3050 Zephyr Road, Kechter Farm, Fort Collins, Larimer County,
Colorado, United States, 80528

18 Floor 2 - Primary Bedroom



Max Dimensions: 16'1" x 18'11"
Calculated Area: 285 sq. ft
Included: Yes

Heated: Yes
Finished: Yes
Enclosed: Yes
Contiguous: Yes
Permitted: Yes
Wet space: No
Addition: No
Conversion: No

19 Floor 2 - W.I.C.



Max Dimensions: 9'2" x 10'0"
Calculated Area: 80 sq. ft
Included: Yes

Heated: Yes
Finished: Yes
Enclosed: Yes
Contiguous: Yes
Permitted: Yes
Wet space: No
Addition: No
Conversion: No

20 Floor 2 - Entry



Max Dimensions: 3'10" x 12'5"
Calculated Area: 47 sq. ft
Included: Yes

Heated: Yes
Finished: Yes
Enclosed: Yes
Contiguous: Yes
Permitted: Yes
Wet space: No
Addition: No
Conversion: No

3050 Zephyr Road, Kechter Farm, Fort Collins, Larimer County,
Colorado, United States, 80528

21 Floor 2 - Bedroom



Max Dimensions: 11'7" x 12'8"
Calculated Area: 143 sq. ft
Included: Yes

Heated: Yes
Finished: Yes
Enclosed: Yes
Contiguous: Yes
Permitted: Yes
Wet space: No
Addition: No
Conversion: No

22 Floor 2 - Hall



Max Dimensions: 11'0" x 5'2"
Calculated Area: 41 sq. ft
Included: Yes

Heated: Yes
Finished: Yes
Enclosed: Yes
Contiguous: Yes
Permitted: Yes
Wet space: No
Addition: No
Conversion: No

23 Floor 2 - Foyer



Max Dimensions: 5'9" x 15'8"
Calculated Area: 161 sq. ft
Included: Yes

Heated: Yes
Finished: Yes
Enclosed: Yes
Contiguous: Yes
Permitted: Yes
Wet space: No
Addition: No
Conversion: No

24 Floor 2 - Covered Patio



Max Dimensions: 43'8" x 26'0"
Calculated Area: 769 sq. ft
Included: No

Heated: No
Finished: Yes
Enclosed: No
Contiguous: Yes
Permitted: Yes
Wet space: No
Addition: No
Conversion: No

25 Floor 2 - WC



Max Dimensions: 5'5" x 3'5"
Calculated Area: 16 sq. ft
Included: Yes

Heated: Yes
Finished: Yes
Enclosed: Yes
Contiguous: Yes
Permitted: Yes
Wet space: Yes
Addition: No
Conversion: No

26 Floor 2 - Yard



Max Dimensions: 43'7" x 22'0"
Calculated Area: 410 sq. ft
Included: No

Heated: No
Finished: No
Enclosed: No
Contiguous: Yes
Permitted: No
Wet space: No
Addition: No
Conversion: No

27 Floor 2 - Bath



Max Dimensions: 13'4" x 10'0"
Calculated Area: 101 sq. ft
Included: Yes

Heated: Yes
Finished: Yes
Enclosed: Yes
Contiguous: Yes
Permitted: Yes
Wet space: Yes
Addition: No
Conversion: No

28 Floor 2 - Kitchen



Max Dimensions: 17'5" x 15'2"
Calculated Area: 247 sq. ft
Included: Yes

Heated: Yes
Finished: Yes
Enclosed: Yes
Contiguous: Yes
Permitted: Yes
Wet space: No
Addition: No
Conversion: No

29 Floor 2 - Porch



Max Dimensions: 18'1" x 13'1"
Calculated Area: 144 sq. ft
Included: No

Heated: No
Finished: Yes
Enclosed: No
Contiguous: Yes
Permitted: Yes
Wet space: No
Addition: No
Conversion: No