

TOTAL Sketch by a la mode

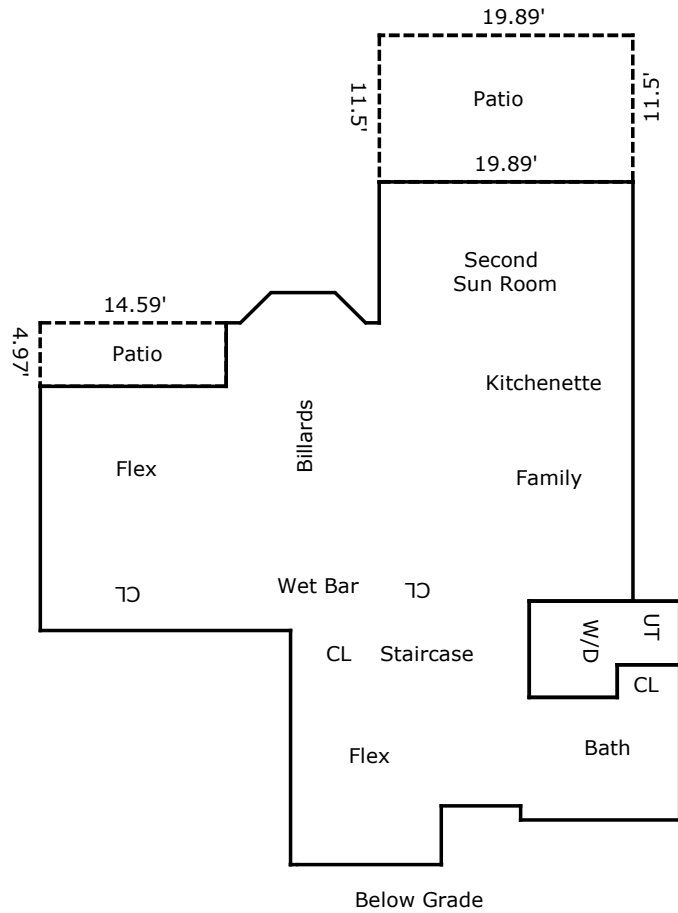
**Area Calculations Summary**

**Living Area**

Main Living Area	1776.65 Sq ft
Second Level	1143.46 Sq ft
<b>Total Living Area (Rounded):</b>	<b>2920 Sq ft</b>

**Non-living Area**

Porch	28.69 Sq ft
Garage	774.69 Sq ft
Deck	315.68 Sq ft
Balcony	72.51 Sq ft
Balcony	72.51 Sq ft



TOTAL Sketch by a la mode

**Area Calculations Summary**

**Living Area**

Below Grade	1708.04 Sq ft
<b>Total Living Area (Rounded):</b>	<b>1708 Sq ft</b>

**Non-living Area**

Patio	72.51 Sq ft
Patio	228.74 Sq ft
Storage	76.57 Sq ft

## Area Calculations Summary

Living Area		Calculation Details	
Main Living Area	1776.65 Sq ft	$0.5 \times 2.42 \times 2.38 = 2.87$	$0.5 \times 2.38 \times 2.42 = 2.87$
		$5.02 \times 2.38 = 11.93$	$19.16 \times 14.59 = 279.54$
		$19.89 \times 10.67 = 212.23$	$31.91 \times 21.83 = 696.69$
		$17.16 \times 12.5 = 214.5$	$2.3 \times 5.06 = 11.64$
		$18.04 \times 16.06 = 289.72$	$4.62 \times 11.83 = 54.65$
Second Level	1143.46 Sq ft	$3.07 \times 4.53 = 13.9$	$11.68 \times 4.97 = 58.05$
		$26.27 \times 20.8 = 546.42$	$16.43 \times 11.77 = 193.38$
		$18.21 \times 4.28 = 77.87$	$12.4 \times 11.01 = 136.52$
		$8.51 \times 12.15 = 103.4$	$1.84 \times 6.64 = 12.2$
		$0.5 \times 1.84 \times 1.87 = 1.72$	
Below Grade	1708.04 Sq ft	$0.5 \times 2.42 \times 2.38 = 2.87$	$0.5 \times 2.38 \times 2.42 = 2.87$
		$5.02 \times 2.38 = 11.93$	$19.16 \times 14.59 = 279.54$
		$19.89 \times 11.07 = 220.18$	$31.91 \times 21.83 = 696.69$
		$2.3 \times 5.06 = 11.64$	$20.68 \times 11.83 = 244.64$
		$6.91 \times 7.55 = 52.17$	$8.51 \times 6.21 = 52.85$
		$8.51 \times 6.21 = 52.85$	$9.61 \times 7.59 = 72.94$
		$4.91 \times 12.16 = 59.71$	
<b>Total Living Area (Rounded):</b>	<b>4628 Sq ft</b>		
<b>Non-living Area</b>			
Porch	28.69 Sq ft	$4.62 \times 6.21 = 28.69$	
Garage	774.69 Sq ft	$24.17 \times 13.93 = 336.69$	$18.88 \times 4.02 = 75.9$
		$18.38 \times 19.69 = 361.9$	$0.5 \times 19.69 \times 0.02 = 0.2$
		$0.5 \times 0.02 \times 0.46 = 0$	
Deck	315.68 Sq ft	$19.89 \times 13.12 = 260.96$	Arc = 54.72
Balcony	72.51 Sq ft	$4.97 \times 14.59 = 72.51$	
Balcony	72.51 Sq ft	$4.97 \times 14.59 = 72.51$	
Patio	72.51 Sq ft	$4.97 \times 14.59 = 72.51$	
Patio	228.74 Sq ft	$11.5 \times 19.89 = 228.74$	
Storage	76.57 Sq ft	$5 \times 4.91 = 24.55$	$7.55 \times 6.89 = 52.02$