

Home report

297 Applewood Drive, Runaway Village, Roanoke, Botetourt County, Virginia, United States, 24019



Total Area: 2517 sq. ft

Floor 1: 442 sq. ft, Floor 2: 1028 sq. ft, Floor 3: 1047 sq. ft

Excluded: Patio 643 sq. ft, Garage 557 sq. ft, Porch 36 sq. ft, Deck 163 sq. ft, Fireplace 10 sq. ft, Walls: 209 sq. ft

Property summary

 **3** Floors

 **4** Bedrooms

 **2** Bathrooms

Home report

**297 Applewood Drive, Runaway Village, Roanoke, Botetourt
County, Virginia, United States, 24019**



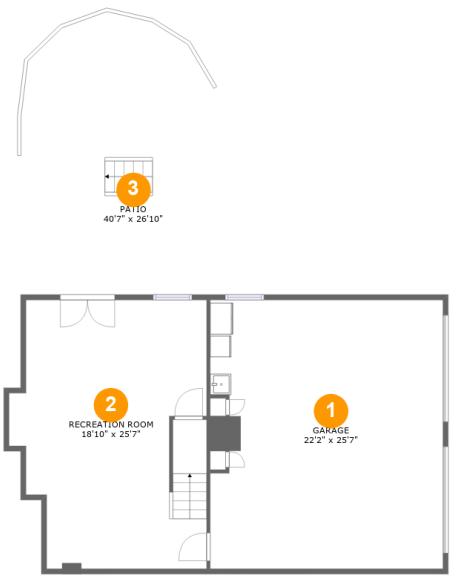
1
Half baths



1
Garages

Home report

297 Applewood Drive, Runaway Village, Roanoke, Botetourt
County, Virginia, United States, 24019



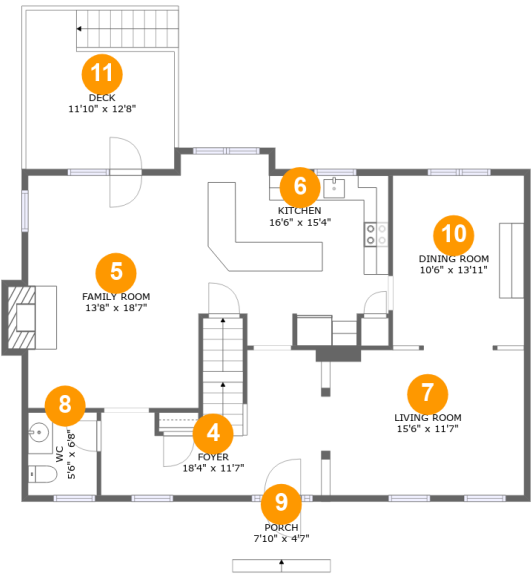
Room dimensions

Floor 1 Total:442sqft Excluded: 1200sqft

#		Max Dimensions	sqft	Included
1	Garage	22'2" x 25'7"	557 sq. ft	No
2	Recreation Room	18'10" x 25'7"	430 sq. ft	Yes
3	Patio	40'7" x 26'10"	643 sq. ft	No

Home report

297 Applewood Drive, Runaway Village, Roanoke, Botetourt
County, Virginia, United States, 24019

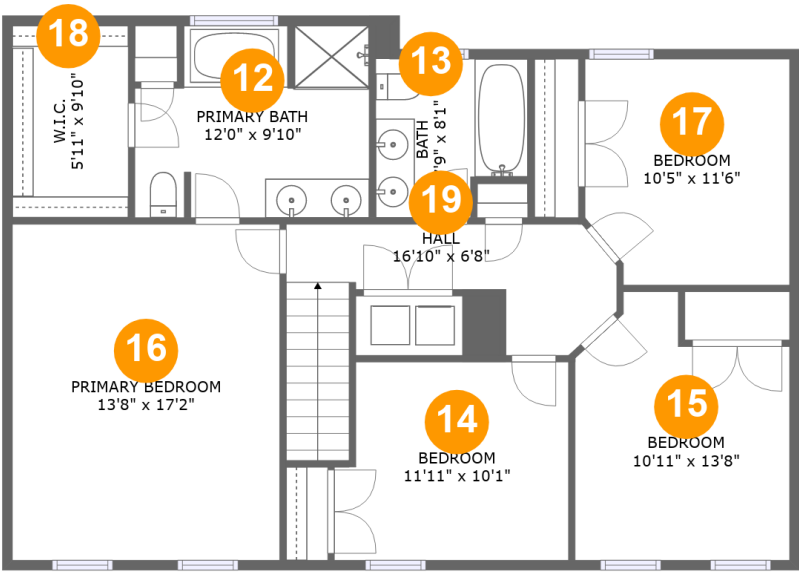


Room dimensions

Floor 2 Total:1028sqft Excluded: 209sqft

#		Max Dimensions	sqft	Included
4	Foyer	18'4" x 11'7"	172 sq. ft	Yes
5	Family Room	13'8" x 18'7"	254 sq. ft	Yes
6	Kitchen	16'6" x 15'4"	209 sq. ft	Yes
7	Living Room	15'6" x 11'7"	180 sq. ft	Yes
8	WC	5'6" x 6'8"	36 sq. ft	Yes
9	Porch	7'10" x 4'7"	36 sq. ft	No
10	Dining Room	10'6" x 13'11"	146 sq. ft	Yes
11	Deck	11'10" x 12'8"	163 sq. ft	No

297 Applewood Drive, Runaway Village, Roanoke, Botetourt
County, Virginia, United States, 24019



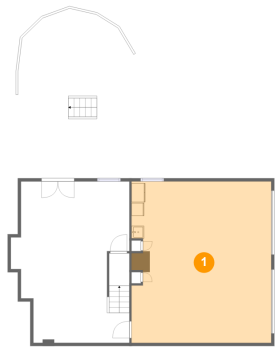
Room dimensions

Floor 3 Total:1047sqft Excluded: 0sqft

#		Max Dimensions	sqft	Included
12	Primary Bath	12'0" x 9'10"	107 sq. ft	Yes
13	Bath	7'9" x 8'1"	58 sq. ft	Yes
14	Bedroom	11'11" x 10'1"	115 sq. ft	Yes
15	Bedroom	10'11" x 13'8"	128 sq. ft	Yes
16	Primary Bedroom	13'8" x 17'2"	234 sq. ft	Yes
17	Bedroom	10'5" x 11'6"	116 sq. ft	Yes
18	W.I.C.	5'11" x 9'10"	58 sq. ft	Yes
19	Hall	16'10" x 6'8"	98 sq. ft	Yes

297 Applewood Drive, Runaway Village, Roanoke, Botetourt
County, Virginia, United States, 24019

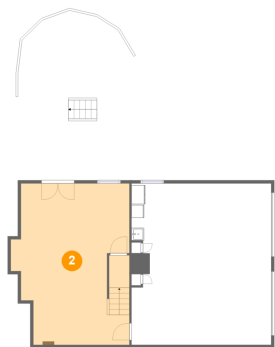
1 Floor 1 - Garage



Max Dimensions: 22'2" x 25'7"
Calculated Area: 557 sq. ft
Included: No

Heated: No
Finished: No
Enclosed: Yes
Contiguous: Yes
Permitted: Yes
Wet space: No
Addition: No
Conversion: No

2 Floor 1 - Recreation Room

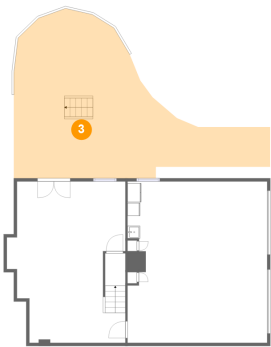


Max Dimensions: 18'10" x 25'7"
Calculated Area: 430 sq. ft
Included: Yes

Heated: Yes
Finished: Yes
Enclosed: Yes
Contiguous: Yes
Permitted: Yes
Wet space: No
Addition: No
Conversion: No

297 Applewood Drive, Runaway Village, Roanoke, Botetourt
County, Virginia, United States, 24019

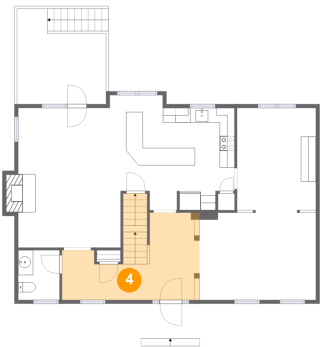
3 Floor 1 - Patio



Max Dimensions: 40'7" x 26'10"
Calculated Area: 643 sq. ft
Included: No

Heated: No
Finished: Yes
Enclosed: No
Contiguous: Yes
Permitted: Yes
Wet space: No
Addition: No
Conversion: No

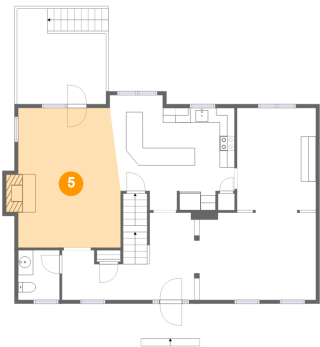
4 Floor 2 - Foyer



Max Dimensions: 18'4" x 11'7"
Calculated Area: 172 sq. ft
Included: Yes

Heated: Yes
Finished: Yes
Enclosed: Yes
Contiguous: Yes
Permitted: Yes
Wet space: No
Addition: No
Conversion: No

5 Floor 2 - Family Room

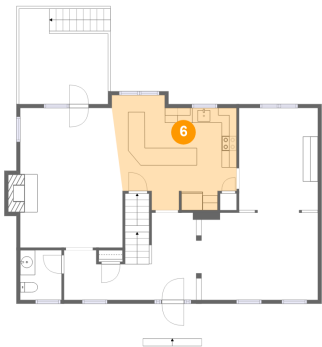


Max Dimensions: 13'8" x 18'7"
Calculated Area: 254 sq. ft
Included: Yes

Heated: Yes
Finished: Yes
Enclosed: Yes
Contiguous: Yes
Permitted: Yes
Wet space: No
Addition: No
Conversion: No

297 Applewood Drive, Runaway Village, Roanoke, Botetourt
County, Virginia, United States, 24019

6 Floor 2 - Kitchen



Max Dimensions: 16'6" x 15'4"
Calculated Area: 209 sq. ft
Included: Yes

Heated: Yes
Finished: Yes
Enclosed: Yes
Contiguous: Yes
Permitted: Yes
Wet space: No
Addition: No
Conversion: No

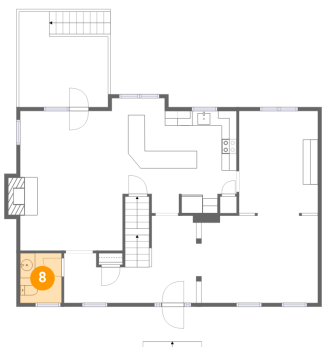
7 Floor 2 - Living Room



Max Dimensions: 15'6" x 11'7"
Calculated Area: 180 sq. ft
Included: Yes

Heated: Yes
Finished: Yes
Enclosed: Yes
Contiguous: Yes
Permitted: Yes
Wet space: No
Addition: No
Conversion: No

8 Floor 2 - WC



Max Dimensions: 5'6" x 6'8"
Calculated Area: 36 sq. ft
Included: Yes

Heated: Yes
Finished: Yes
Enclosed: Yes
Contiguous: Yes
Permitted: Yes
Wet space: Yes
Addition: No
Conversion: No

297 Applewood Drive, Runaway Village, Roanoke, Botetourt
County, Virginia, United States, 24019

9 Floor 2 - Porch



Max Dimensions: 7'10" x 4'7"
Calculated Area: 36 sq. ft
Included: No

Heated: No
Finished: Yes
Enclosed: No
Contiguous: Yes
Permitted: Yes
Wet space: No
Addition: No
Conversion: No

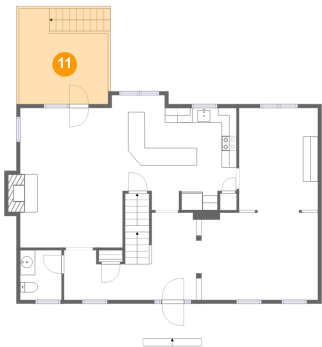
10 Floor 2 - Dining Room



Max Dimensions: 10'6" x 13'11"
Calculated Area: 146 sq. ft
Included: Yes

Heated: Yes
Finished: Yes
Enclosed: Yes
Contiguous: Yes
Permitted: Yes
Wet space: No
Addition: No
Conversion: No

11 Floor 2 - Deck

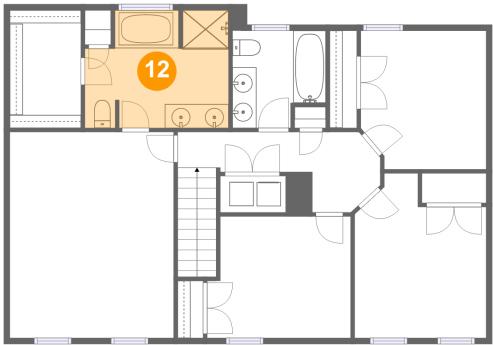


Max Dimensions: 11'10" x 12'8"
Calculated Area: 163 sq. ft
Included: No

Heated: No
Finished: Yes
Enclosed: No
Contiguous: Yes
Permitted: Yes
Wet space: No
Addition: No
Conversion: No

297 Applewood Drive, Runaway Village, Roanoke, Botetourt
County, Virginia, United States, 24019

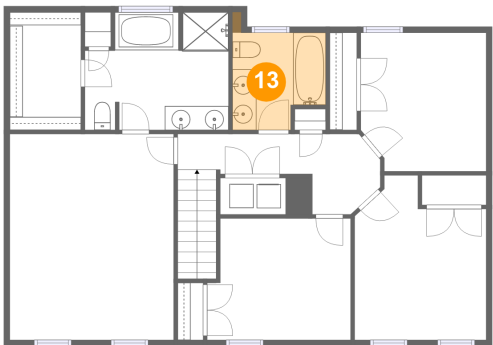
12 Floor 3 - Primary Bath



Max Dimensions: 12'0" x 9'10"
Calculated Area: 107 sq. ft
Included: Yes

Heated: Yes
Finished: Yes
Enclosed: Yes
Contiguous: Yes
Permitted: Yes
Wet space: Yes
Addition: No
Conversion: No

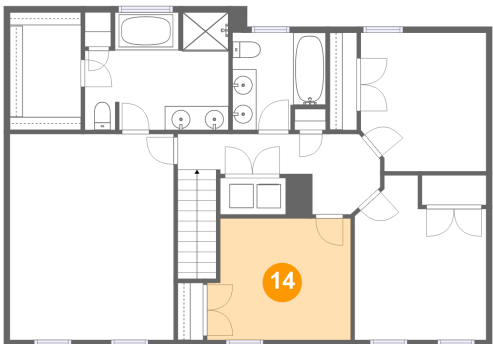
13 Floor 3 - Bath



Max Dimensions: 7'9" x 8'1"
Calculated Area: 58 sq. ft
Included: Yes

Heated: Yes
Finished: Yes
Enclosed: Yes
Contiguous: Yes
Permitted: Yes
Wet space: Yes
Addition: No
Conversion: No

14 Floor 3 - Bedroom

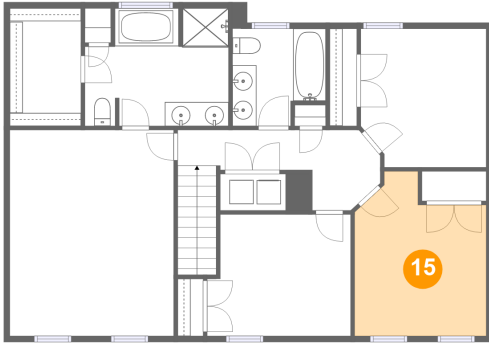


Max Dimensions: 11'11" x 10'1"
Calculated Area: 115 sq. ft
Included: Yes

Heated: Yes
Finished: Yes
Enclosed: Yes
Contiguous: Yes
Permitted: Yes
Wet space: No
Addition: No
Conversion: No

297 Applewood Drive, Runaway Village, Roanoke, Botetourt
County, Virginia, United States, 24019

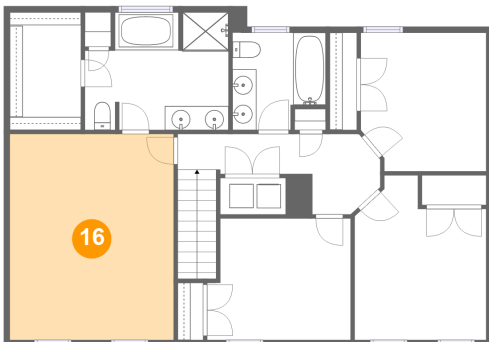
15 Floor 3 - Bedroom



Max Dimensions: 10'11" x 13'8"
Calculated Area: 128 sq. ft
Included: Yes

Heated: Yes
Finished: Yes
Enclosed: Yes
Contiguous: Yes
Permitted: Yes
Wet space: No
Addition: No
Conversion: No

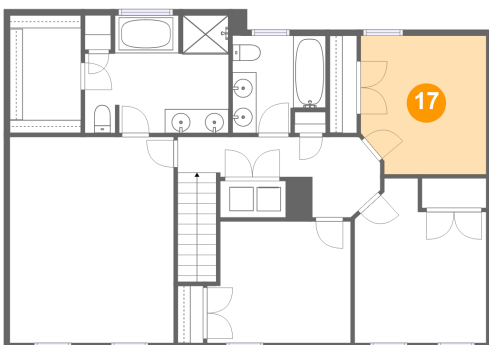
16 Floor 3 - Primary Bedroom



Max Dimensions: 13'8" x 17'2"
Calculated Area: 234 sq. ft
Included: Yes

Heated: Yes
Finished: Yes
Enclosed: Yes
Contiguous: Yes
Permitted: Yes
Wet space: No
Addition: No
Conversion: No

17 Floor 3 - Bedroom

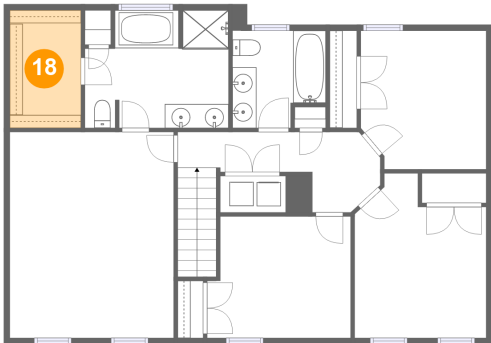


Max Dimensions: 10'5" x 11'6"
Calculated Area: 116 sq. ft
Included: Yes

Heated: Yes
Finished: Yes
Enclosed: Yes
Contiguous: Yes
Permitted: Yes
Wet space: No
Addition: No
Conversion: No

297 Applewood Drive, Runaway Village, Roanoke, Botetourt
County, Virginia, United States, 24019

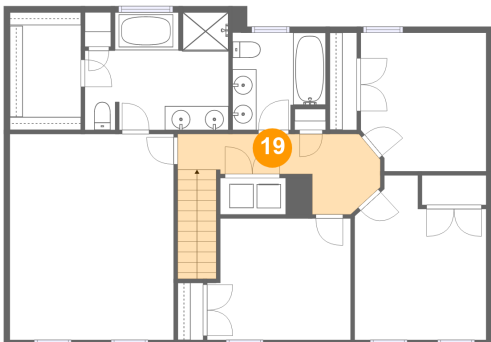
18 Floor 3 - W.I.C.



Max Dimensions: 5'11" x 9'10"
Calculated Area: 58 sq. ft
Included: Yes

Heated: Yes
Finished: Yes
Enclosed: Yes
Contiguous: Yes
Permitted: Yes
Wet space: No
Addition: No
Conversion: No

19 Floor 3 - Hall



Max Dimensions: 16'10" x 6'8"
Calculated Area: 98 sq. ft
Included: Yes

Heated: Yes
Finished: Yes
Enclosed: Yes
Contiguous: Yes
Permitted: Yes
Wet space: No
Addition: No
Conversion: No