

Home report

18 Helston Crescent, Whitby, ON, CA



Total Area: 3640 sq. ft

Below Ground: 1009 sq. ft, Floor 2: 1239 sq. ft, Floor 3: 1392 sq. ft

Excluded: Storage 89 sq. ft, Utility 231 sq. ft, Fireplace 14 sq. ft, Garage 311 sq. ft, Walls: 262 sq. ft

Property summary



3
Floors



4
Bedrooms



3
Bathrooms

Home report

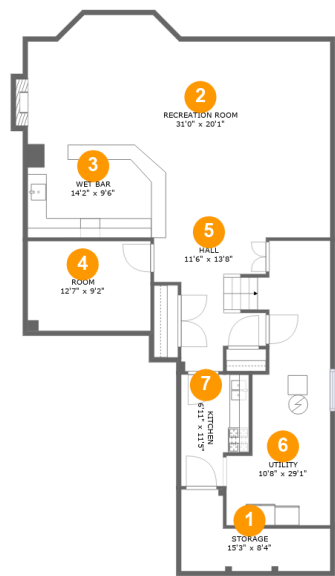
18 Helston Crescent,Whitby,ON,CA

 **1**
Half baths

 **1**
Garages

Home report

18 Helston Crescent,Whitby,ON,CA



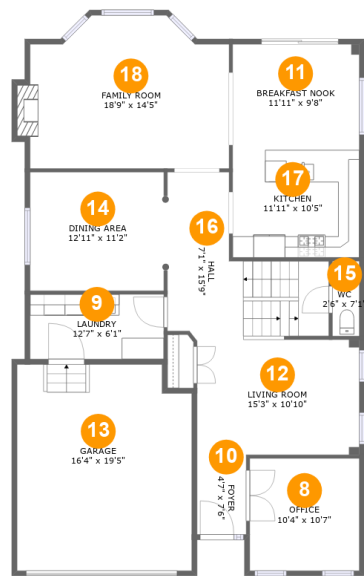
Room dimensions

Floor 1 Below ground Total:1009sqft Excluded: 327sqft

#		Max Dimensions	sqft	Included
1	Storage	15'3" x 8'4"	84 sq. ft	No
2	Recreation Room	31'0" x 20'1"	524 sq. ft	Yes
3	Wet Bar	14'2" x 9'6"	130 sq. ft	Yes
4	Room	12'7" x 9'2"	115 sq. ft	Yes
5	Hall	11'6" x 13'8"	116 sq. ft	Yes
6	Utility	10'8" x 29'1"	231 sq. ft	No
7	Kitchen	6'11" x 11'5"	70 sq. ft	Yes

Home report

18 Helston Crescent,Whitby,ON,CA



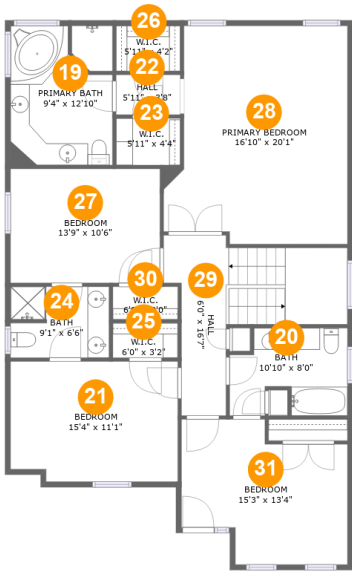
Room dimensions

Floor 2 Total:1239sqft Excluded: 318sqft

#		Max Dimensions	sqft	Included
8	Office	10'4" x 10'7"	109 sq. ft	Yes
9	Laundry	12'7" x 6'1"	77 sq. ft	Yes
10	Foyer	4'7" x 7'6"	35 sq. ft	Yes
11	Breakfast Nook	11'11" x 9'8"	115 sq. ft	Yes
12	Living Room	15'3" x 10'10"	165 sq. ft	Yes
13	Garage	16'4" x 19'5"	311 sq. ft	No
14	Dining Area	12'11" x 11'2"	143 sq. ft	Yes
15	WC	2'6" x 7'1"	18 sq. ft	Yes
16	Hall	7'1" x 15'9"	157 sq. ft	Yes
17	Kitchen	11'11" x 10'5"	123 sq. ft	Yes
18	Family Room	18'9" x 14'5"	251 sq. ft	Yes

Home report

18 Helston Crescent,Whitby,ON,CA



Room dimensions

Floor 3

Total:1392sqft

Excluded: 0sqft

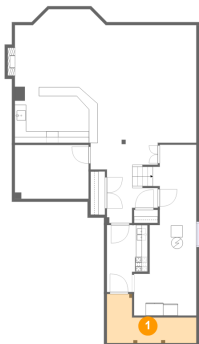
#		Max Dimensions	sqft	Included
19	Primary Bath	9'4" x 12'10"	118 sq. ft	Yes
20	Bath	10'10" x 8'0"	75 sq. ft	Yes
21	Bedroom	15'4" x 11'1"	166 sq. ft	Yes
22	Hall	5'11" x 3'8"	22 sq. ft	Yes
23	W.I.C.	5'11" x 4'4"	25 sq. ft	Yes
24	Bath	9'1" x 6'6"	58 sq. ft	Yes
25	W.I.C.	6'0" x 3'2"	19 sq. ft	Yes
26	W.I.C.	5'11" x 4'2"	25 sq. ft	Yes
27	Bedroom	13'9" x 10'6"	144 sq. ft	Yes
28	Primary Bedroom	16'10" x 20'1"	305 sq. ft	Yes
29	Hall	6'0" x 16'7"	154 sq. ft	Yes

Home report

18 Helston Crescent,Whitby,ON,CA

#		Max Dimensions	sqft	Included
30	W.I.C.	6'0" x 3'0"	18 sq. ft	Yes
31	Bedroom	15'3" x 13'4"	169 sq. ft	Yes

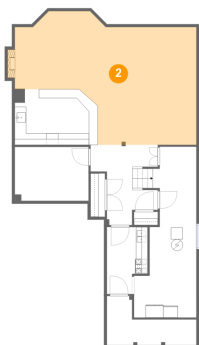
1 Floor 1 - Storage



Max Dimensions: 15'3" x 8'4"
Calculated Area: 84 sq. ft
Included: No

Heated: No
Finished: No
Enclosed: No
Contiguous: Yes
Permitted: Yes
Wet space: No
Addition: No
Conversion: No

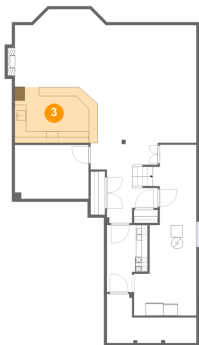
2 Floor 1 - Recreation Room



Max Dimensions: 31'0" x 20'1"
Calculated Area: 524 sq. ft
Included: Yes

Heated: Yes
Finished: Yes
Enclosed: Yes
Contiguous: Yes
Permitted: Yes
Wet space: No
Addition: No
Conversion: No

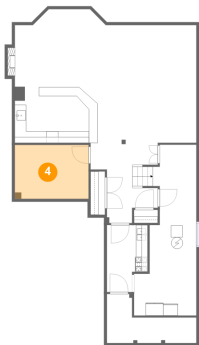
3 Floor 1 - Wet Bar



Max Dimensions: 14'2" x 9'6"
Calculated Area: 130 sq. ft
Included: Yes

Heated: Yes
Finished: Yes
Enclosed: Yes
Contiguous: Yes
Permitted: Yes
Wet space: No
Addition: No
Conversion: No

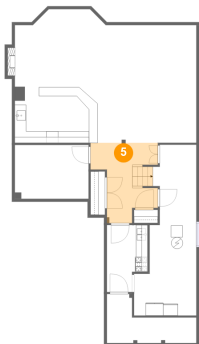
4 Floor 1 - Room



Max Dimensions: 12'7" x 9'2"
Calculated Area: 115 sq. ft
Included: Yes

Heated: Yes
Finished: Yes
Enclosed: Yes
Contiguous: Yes
Permitted: Yes
Wet space: No
Addition: No
Conversion: No

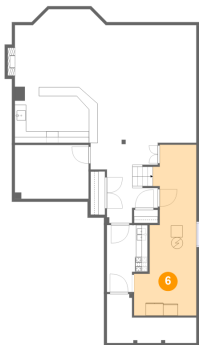
5 Floor 1 - Hall



Max Dimensions: 11'6" x 13'8"
Calculated Area: 116 sq. ft
Included: Yes

Heated: Yes
Finished: Yes
Enclosed: Yes
Contiguous: Yes
Permitted: Yes
Wet space: No
Addition: No
Conversion: No

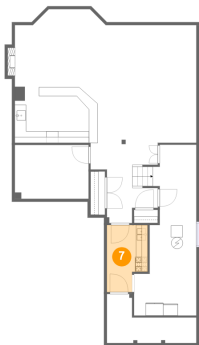
6 Floor 1 - Utility



Max Dimensions: 10'8" x 29'1"
Calculated Area: 231 sq. ft
Included: No

Heated: Yes
Finished: No
Enclosed: Yes
Contiguous: Yes
Permitted: Yes
Wet space: No
Addition: No
Conversion: No

7 Floor 1 - Kitchen



Max Dimensions: 6'11" x 11'5"
Calculated Area: 70 sq. ft
Included: Yes

Heated: Yes
Finished: Yes
Enclosed: Yes
Contiguous: Yes
Permitted: Yes
Wet space: No
Addition: No
Conversion: No

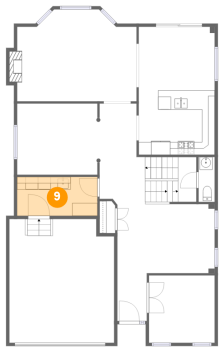
8 Floor 2 - Office



Max Dimensions: 10'4" x 10'7"
Calculated Area: 109 sq. ft
Included: Yes

Heated: Yes
Finished: Yes
Enclosed: Yes
Contiguous: Yes
Permitted: Yes
Wet space: No
Addition: No
Conversion: No

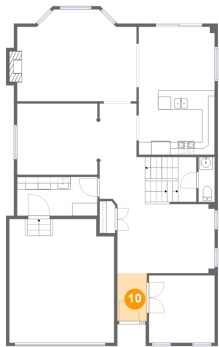
9 Floor 2 - Laundry



Max Dimensions: 12'7" x 6'1"
Calculated Area: 77 sq. ft
Included: Yes

Heated: Yes
Finished: Yes
Enclosed: Yes
Contiguous: Yes
Permitted: Yes
Wet space: No
Addition: No
Conversion: No

10 Floor 2 - Foyer



Max Dimensions: 4'7" x 7'6"
Calculated Area: 35 sq. ft
Included: Yes

Heated: Yes
Finished: Yes
Enclosed: Yes
Contiguous: Yes
Permitted: Yes
Wet space: No
Addition: No
Conversion: No

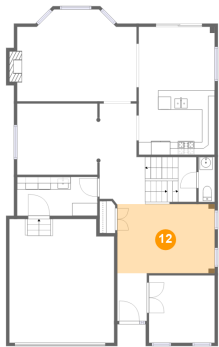
11 Floor 2 - Breakfast Nook



Max Dimensions: 11'11" x 9'8"
Calculated Area: 115 sq. ft
Included: Yes

Heated: Yes
Finished: Yes
Enclosed: Yes
Contiguous: Yes
Permitted: Yes
Wet space: No
Addition: No
Conversion: No

12 Floor 2 - Living Room



Max Dimensions: 15'3" x 10'10"
Calculated Area: 165 sq. ft
Included: Yes

Heated: Yes
Finished: Yes
Enclosed: Yes
Contiguous: Yes
Permitted: Yes
Wet space: No
Addition: No
Conversion: No

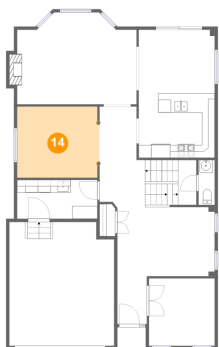
13 Floor 2 - Garage



Max Dimensions: 16'4" x 19'5"
Calculated Area: 311 sq. ft
Included: No

Heated: No
Finished: No
Enclosed: Yes
Contiguous: Yes
Permitted: Yes
Wet space: No
Addition: No
Conversion: No

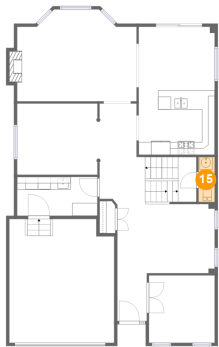
14 Floor 2 - Dining Area



Max Dimensions: 12'11" x 11'2"
Calculated Area: 143 sq. ft
Included: Yes

Heated: Yes
Finished: Yes
Enclosed: Yes
Contiguous: Yes
Permitted: Yes
Wet space: No
Addition: No
Conversion: No

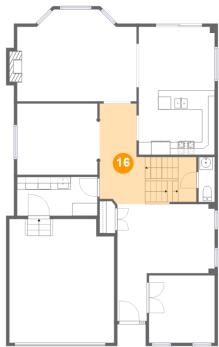
15 Floor 2 - WC



Max Dimensions: 2'6" x 7'1"
Calculated Area: 18 sq. ft
Included: Yes

Heated: Yes
Finished: Yes
Enclosed: Yes
Contiguous: Yes
Permitted: Yes
Wet space: No
Addition: No
Conversion: No

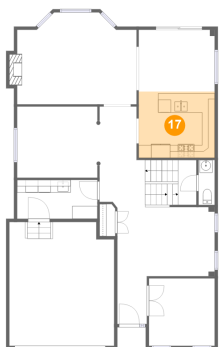
16 Floor 2 - Hall



Max Dimensions: 7'1" x 15'9"
Calculated Area: 157 sq. ft
Included: Yes

Heated: Yes
Finished: Yes
Enclosed: Yes
Contiguous: Yes
Permitted: Yes
Wet space: No
Addition: No
Conversion: No

17 Floor 2 - Kitchen



Max Dimensions: 11'11" x 10'5"
Calculated Area: 123 sq. ft
Included: Yes

Heated: Yes
Finished: Yes
Enclosed: Yes
Contiguous: Yes
Permitted: Yes
Wet space: No
Addition: No
Conversion: No

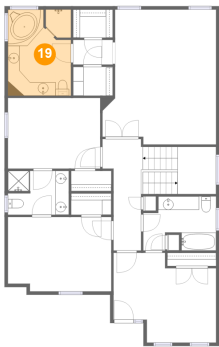
18 Floor 2 - Family Room



Max Dimensions: 18'9" x 14'5"
Calculated Area: 251 sq. ft
Included: Yes

Heated: Yes
Finished: Yes
Enclosed: Yes
Contiguous: Yes
Permitted: Yes
Wet space: No
Addition: No
Conversion: No

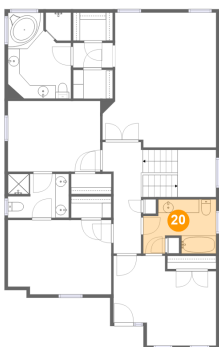
19 Floor 3 - Primary Bath



Max Dimensions: 9'4" x 12'10"
Calculated Area: 118 sq. ft
Included: Yes

Heated: Yes
Finished: Yes
Enclosed: Yes
Contiguous: Yes
Permitted: Yes
Wet space: Yes
Addition: No
Conversion: No

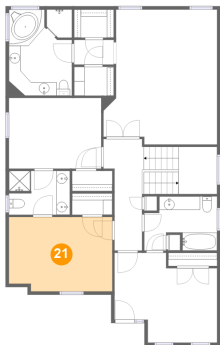
20 Floor 3 - Bath



Max Dimensions: 10'10" x 8'0"
Calculated Area: 75 sq. ft
Included: Yes

Heated: Yes
Finished: Yes
Enclosed: Yes
Contiguous: Yes
Permitted: Yes
Wet space: Yes
Addition: No
Conversion: No

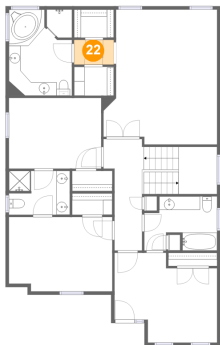
21 Floor 3 - Bedroom



Max Dimensions: 15'4" x 11'1"
Calculated Area: 166 sq. ft
Included: Yes

Heated: Yes
Finished: Yes
Enclosed: Yes
Contiguous: Yes
Permitted: Yes
Wet space: No
Addition: No
Conversion: No

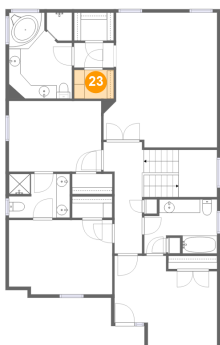
22 Floor 3 - Hall



Max Dimensions: 5'11" x 3'8"
Calculated Area: 22 sq. ft
Included: Yes

Heated: Yes
Finished: Yes
Enclosed: Yes
Contiguous: Yes
Permitted: Yes
Wet space: No
Addition: No
Conversion: No

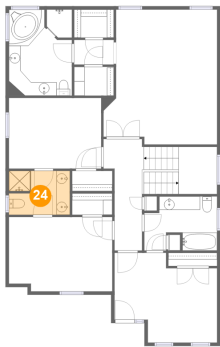
23 Floor 3 - W.I.C.



Max Dimensions: 5'11" x 4'4"
Calculated Area: 25 sq. ft
Included: Yes

Heated: Yes
Finished: Yes
Enclosed: Yes
Contiguous: Yes
Permitted: Yes
Wet space: No
Addition: No
Conversion: No

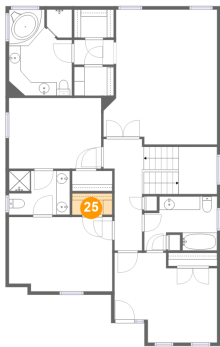
24 Floor 3 - Bath



Max Dimensions: 9'1" x 6'6"
Calculated Area: 58 sq. ft
Included: Yes

Heated: Yes
Finished: Yes
Enclosed: Yes
Contiguous: Yes
Permitted: Yes
Wet space: Yes
Addition: No
Conversion: No

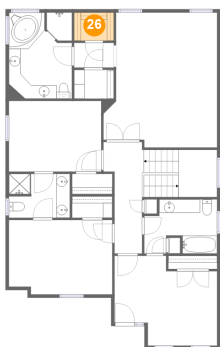
25 Floor 3 - W.I.C.



Max Dimensions: 6'0" x 3'2"
Calculated Area: 19 sq. ft
Included: Yes

Heated: Yes
Finished: Yes
Enclosed: Yes
Contiguous: Yes
Permitted: Yes
Wet space: No
Addition: No
Conversion: No

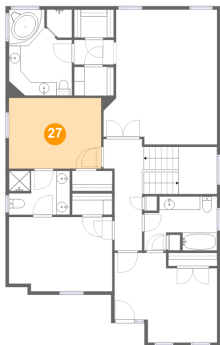
26 Floor 3 - W.I.C.



Max Dimensions: 5'11" x 4'2"
Calculated Area: 25 sq. ft
Included: Yes

Heated: Yes
Finished: Yes
Enclosed: Yes
Contiguous: Yes
Permitted: Yes
Wet space: No
Addition: No
Conversion: No

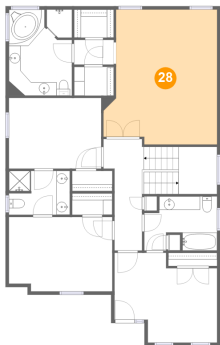
27 Floor 3 - Bedroom



Max Dimensions: 13'9" x 10'6"
Calculated Area: 144 sq. ft
Included: Yes

Heated: Yes
Finished: Yes
Enclosed: Yes
Contiguous: Yes
Permitted: Yes
Wet space: No
Addition: No
Conversion: No

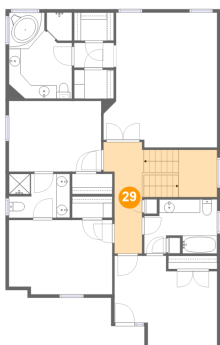
28 Floor 3 - Primary Bedroom



Max Dimensions: 16'10" x 20'1"
Calculated Area: 305 sq. ft
Included: Yes

Heated: Yes
Finished: Yes
Enclosed: Yes
Contiguous: Yes
Permitted: Yes
Wet space: No
Addition: No
Conversion: No

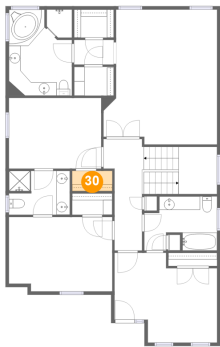
29 Floor 3 - Hall



Max Dimensions: 6'0" x 16'7"
Calculated Area: 154 sq. ft
Included: Yes

Heated: Yes
Finished: Yes
Enclosed: Yes
Contiguous: Yes
Permitted: Yes
Wet space: No
Addition: No
Conversion: No

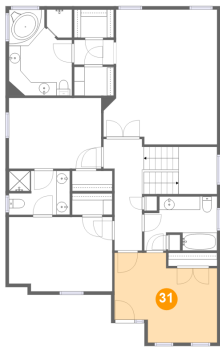
30 Floor 3 - W.I.C.



Max Dimensions: 6'0" x 3'0"
Calculated Area: 18 sq. ft
Included: Yes

Heated: Yes
Finished: Yes
Enclosed: Yes
Contiguous: Yes
Permitted: Yes
Wet space: No
Addition: No
Conversion: No

31 Floor 3 - Bedroom



Max Dimensions: 15'3" x 13'4"
Calculated Area: 169 sq. ft
Included: Yes

Heated: Yes
Finished: Yes
Enclosed: Yes
Contiguous: Yes
Permitted: Yes
Wet space: No
Addition: No
Conversion: No