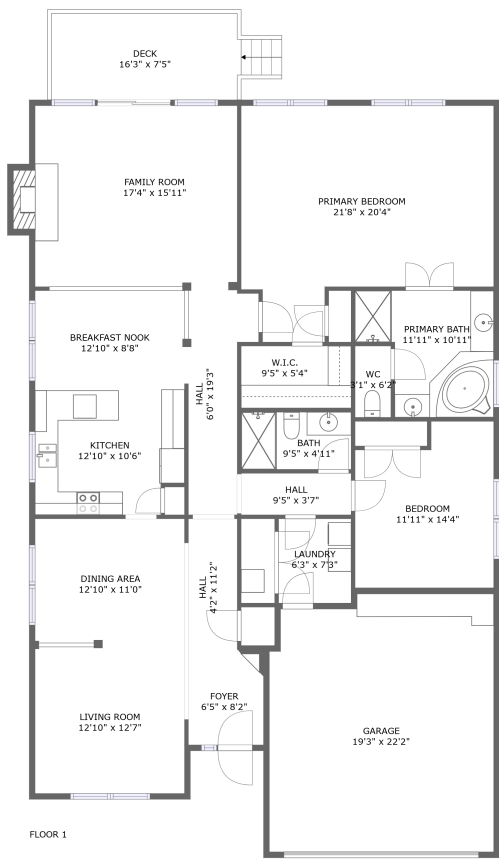


Home report

528 Clubside Drive, Herring Estates, Taneytown, Carroll County,
Maryland, United States, 21787




Total Area: 1965 sq. ft
Floor 1: 1965 sq. ft
Excluded: Garage 414 sq. ft, Deck 130 sq. ft, Fireplace 11 sq. ft, Walls: 121 sq. ft

Property summary

 **1** Floors

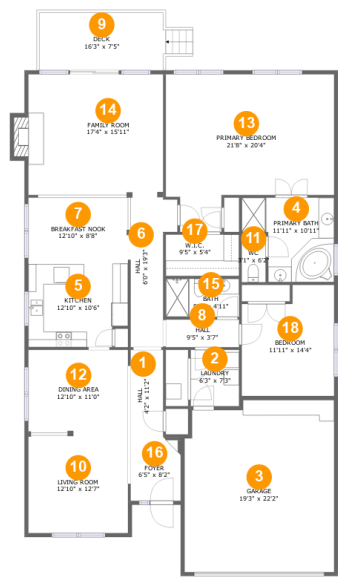
 **2** Bedrooms

 **2** Bathrooms

 **1** Garages

Home report

528 Clubside Drive, Herring Estates, Taneytown, Carroll County, Maryland, United States, 21787



Room dimensions

Floor 1 Total:1965sqft Excluded: 555sqft

#		Max Dimensions	sqft	Included
1	Hall	4'2" x 11'2"	47 sq. ft	Yes
2	Laundry	6'3" x 7'3"	45 sq. ft	Yes
3	Garage	19'3" x 22'2"	414 sq. ft	No
4	Primary Bath	11'11" x 10'11"	108 sq. ft	Yes
5	Kitchen	12'10" x 10'6"	130 sq. ft	Yes
6	Hall	6'0" x 19'3"	91 sq. ft	Yes
7	Breakfast Nook	12'10" x 8'8"	111 sq. ft	Yes
8	Hall	9'5" x 3'7"	34 sq. ft	Yes
9	Deck	16'3" x 7'5"	130 sq. ft	No
10	Living Room	12'10" x 12'7"	162 sq. ft	Yes
11	WC	3'1" x 6'2"	19 sq. ft	Yes

Home report

**528 Clubside Drive, Herring Estates, Taneytown, Carroll County,
Maryland, United States, 21787**

#		Max Dimensions	sqft	Included
12	Dining Area	12'10" x 11'0"	141 sq. ft	Yes
13	Primary Bedroom	21'8" x 20'4"	363 sq. ft	Yes
14	Family Room	17'4" x 15'11"	285 sq. ft	Yes
15	Bath	9'5" x 4'11"	46 sq. ft	Yes
16	Foyer	6'5" x 8'2"	53 sq. ft	Yes
17	W.I.C.	9'5" x 5'4"	50 sq. ft	Yes
18	Bedroom	11'11" x 14'4"	154 sq. ft	Yes

1 Floor 1 - Hall



Max Dimensions: 4'2" x 11'2"
Calculated Area: 47 sq. ft
Included: Yes

Heated: Yes
Finished: Yes
Enclosed: Yes
Contiguous: Yes
Permitted: Yes
Wet space: No
Addition: No
Conversion: No

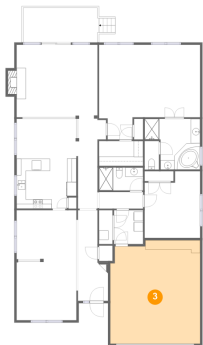
2 Floor 1 - Laundry



Max Dimensions: 6'3" x 7'3"
Calculated Area: 45 sq. ft
Included: Yes

Heated: Yes
Finished: Yes
Enclosed: Yes
Contiguous: Yes
Permitted: Yes
Wet space: No
Addition: No
Conversion: No

3 Floor 1 - Garage



Max Dimensions: 19'3" x 22'2"
Calculated Area: 414 sq. ft
Included: No

Heated: No
Finished: No
Enclosed: Yes
Contiguous: Yes
Permitted: Yes
Wet space: No
Addition: No
Conversion: No

4 Floor 1 - Primary Bath



Max Dimensions: 11'11" x 10'11"
Calculated Area: 108 sq. ft
Included: Yes

Heated: Yes
Finished: Yes
Enclosed: Yes
Contiguous: Yes
Permitted: Yes
Wet space: Yes
Addition: No
Conversion: No

5 Floor 1 - Kitchen



Max Dimensions: 12'10" x 10'6"
Calculated Area: 130 sq. ft
Included: Yes

Heated: Yes
Finished: Yes
Enclosed: Yes
Contiguous: Yes
Permitted: Yes
Wet space: No
Addition: No
Conversion: No

6 Floor 1 - Hall



Max Dimensions: 6'0" x 19'3"
Calculated Area: 91 sq. ft
Included: Yes

Heated: Yes
Finished: Yes
Enclosed: Yes
Contiguous: Yes
Permitted: Yes
Wet space: No
Addition: No
Conversion: No

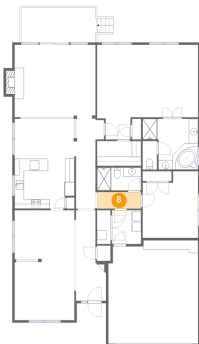
7 Floor 1 - Breakfast Nook



Max Dimensions: 12'10" x 8'8"
Calculated Area: 111 sq. ft
Included: Yes

Heated: Yes
Finished: Yes
Enclosed: Yes
Contiguous: Yes
Permitted: Yes
Wet space: No
Addition: No
Conversion: No

8 Floor 1 - Hall



Max Dimensions: 9'5" x 3'7"
Calculated Area: 34 sq. ft
Included: Yes

Heated: Yes
Finished: Yes
Enclosed: Yes
Contiguous: Yes
Permitted: Yes
Wet space: No
Addition: No
Conversion: No

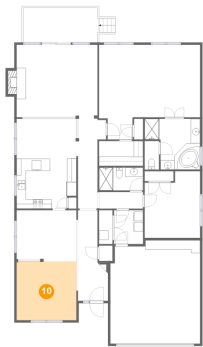
9 Floor 1 - Deck



Max Dimensions: 16'3" x 7'5"
Calculated Area: 130 sq. ft
Included: No

Heated: No
Finished: Yes
Enclosed: No
Contiguous: Yes
Permitted: Yes
Wet space: No
Addition: No
Conversion: No

10 Floor 1 - Living Room



Max Dimensions: 12'10" x 12'7"
Calculated Area: 162 sq. ft
Included: Yes

Heated: Yes
Finished: Yes
Enclosed: Yes
Contiguous: Yes
Permitted: Yes
Wet space: No
Addition: No
Conversion: No

11 Floor 1 - WC



Max Dimensions: 3'1" x 6'2"
Calculated Area: 19 sq. ft
Included: Yes

Heated: Yes
Finished: Yes
Enclosed: Yes
Contiguous: Yes
Permitted: Yes
Wet space: Yes
Addition: No
Conversion: No

12 Floor 1 - Dining Area



Max Dimensions: 12'10" x 11'0"
Calculated Area: 141 sq. ft
Included: Yes

Heated: Yes
Finished: Yes
Enclosed: Yes
Contiguous: Yes
Permitted: Yes
Wet space: No
Addition: No
Conversion: No

13 Floor 1 - Primary Bedroom



Max Dimensions: 21'8" x 20'4"
Calculated Area: 363 sq. ft
Included: Yes

Heated: Yes
Finished: Yes
Enclosed: Yes
Contiguous: Yes
Permitted: Yes
Wet space: No
Addition: No
Conversion: No

14 Floor 1 - Family Room



Max Dimensions: 17'4" x 15'11"
Calculated Area: 285 sq. ft
Included: Yes

Heated: Yes
Finished: Yes
Enclosed: Yes
Contiguous: Yes
Permitted: Yes
Wet space: No
Addition: No
Conversion: No

528 Clubside Drive, Herring Estates, Taneytown, Carroll County,
Maryland, United States, 21787

15 Floor 1 - Bath



Max Dimensions: 9'5" x 4'11"
Calculated Area: 46 sq. ft
Included: Yes

Heated: Yes
Finished: Yes
Enclosed: Yes
Contiguous: Yes
Permitted: Yes
Wet space: Yes
Addition: No
Conversion: No

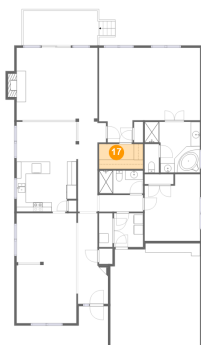
16 Floor 1 - Foyer



Max Dimensions: 6'5" x 8'2"
Calculated Area: 53 sq. ft
Included: Yes

Heated: Yes
Finished: Yes
Enclosed: Yes
Contiguous: Yes
Permitted: Yes
Wet space: No
Addition: No
Conversion: No

17 Floor 1 - W.I.C.

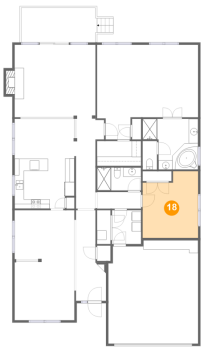


Max Dimensions: 9'5" x 5'4"
Calculated Area: 50 sq. ft
Included: Yes

Heated: Yes
Finished: Yes
Enclosed: Yes
Contiguous: Yes
Permitted: Yes
Wet space: No
Addition: No
Conversion: No

528 Clubside Drive, Herring Estates, Taneytown, Carroll County,
Maryland, United States, 21787

18 Floor 1 - Bedroom



Max Dimensions: 11'11" x
14'4"
Calculated Area: 154 sq. ft
Included: Yes

Heated: Yes
Finished: Yes
Enclosed: Yes
Contiguous:
Yes
Permitted: Yes
Wet space: No
Addition: No
Conversion: No