


Home report

112 Samuel Sharpe, Williamsburg, VA, US



Property summary

 **1** Garages

 **4** Bedrooms

 **2** Bathrooms

 **1** Half baths

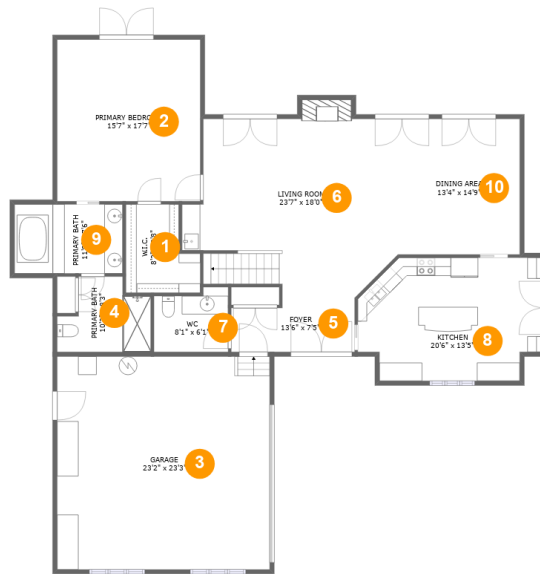
 **2** Floors

 **3,117** Gross living area sqft

 **4,272** Total sqft

Home report

112 Samuel Sharpe, Williamsburg, VA, US



Room dimensions

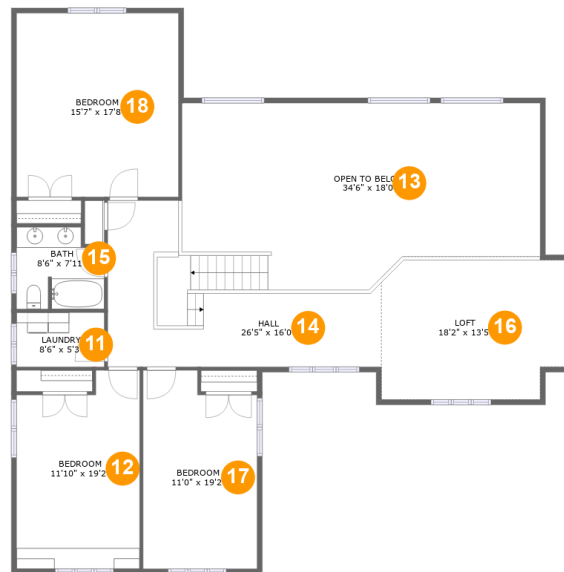
Floor 1

Total sqft: 2214 Living area: 1627

#		Dimensions	sqft	Counted as living area
1	W.I.C.	8'2" x 9'8"	66 sq. ft	Yes
2	Primary Bedroom	15'7" x 17'7"	276 sq. ft	Yes
3	Garage	23'2" x 23'3"	539 sq. ft	No
4	Primary Bath	10'3" x 8'3"	68 sq. ft	Yes
5	Foyer	13'6" x 7'5"	86 sq. ft	Yes
6	Living Room	23'7" x 18'0"	399 sq. ft	Yes
7	WC	8'1" x 6'1"	52 sq. ft	Yes
8	Kitchen	20'6" x 13'5"	249 sq. ft	Yes
9	Primary Bath	11'9" x 7'6"	89 sq. ft	Yes
10	Dining Area	13'4" x 14'9"	197 sq. ft	Yes

Home report

112 Samuel Sharpe, Williamsburg, VA, US



Room dimensions

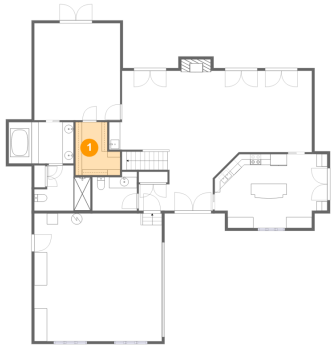
Floor 2

Total sqft: 2058

Living area: 1490

#		Dimensions	sqft	Counted as living area
11	Laundry	8'6" x 5'3"	44 sq. ft	Yes
12	Bedroom	11'10" x 19'2"	209 sq. ft	Yes
13	Open To Below	34'6" x 18'0"	544 sq. ft	No
14	Hall	26'5" x 16'0"	289 sq. ft	Yes
15	Bath	8'6" x 7'11"	61 sq. ft	Yes
16	Loft	18'2" x 13'5"	238 sq. ft	Yes
17	Bedroom	11'0" x 19'2"	197 sq. ft	Yes
18	Bedroom	15'7" x 17'8"	277 sq. ft	Yes

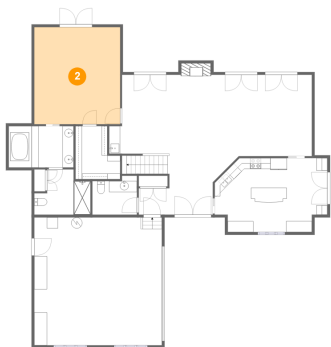
1 Floor 1 - W.I.C.



Dimensions: 8'2" x 9'8"
Area: 66 sq. ft
Counted as living area: Yes

Heated: Yes
Finished: Yes
Enclosed: Yes
Contiguous: Yes
Permitted: Yes
Wet space: No
Addition: No
Conversion: No

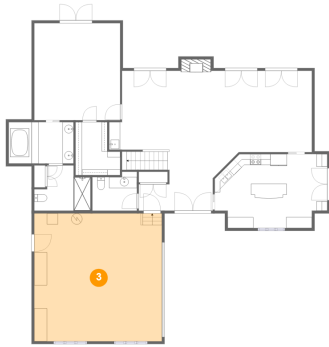
2 Floor 1 - Primary Bedroom



Dimensions: 15'7" x 17'7"
Area: 276 sq. ft
Counted as living area: Yes

Heated: Yes
Finished: Yes
Enclosed: Yes
Contiguous: Yes
Permitted: Yes
Wet space: No
Addition: No
Conversion: No

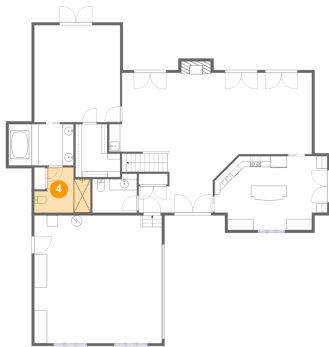
3 Floor 1 - Garage



Dimensions: 23'2" x 23'3"
Area: 539 sq. ft
Counted as living area: No

Heated: No
Finished: No
Enclosed: Yes
Contiguous: Yes
Permitted: Yes
Wet space: No
Addition: No
Conversion: No

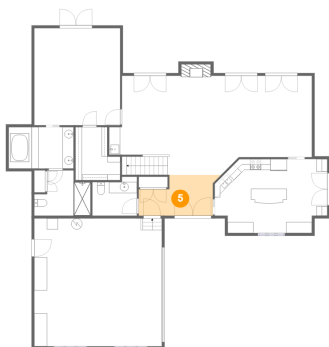
4 Floor 1 - Primary Bath



Dimensions: 10'3" x 8'3"
Area: 68 sq. ft
Counted as living area: Yes

Heated: Yes
Finished: Yes
Enclosed: Yes
Contiguous: Yes
Permitted: Yes
Wet space: Yes
Addition: No
Conversion: No

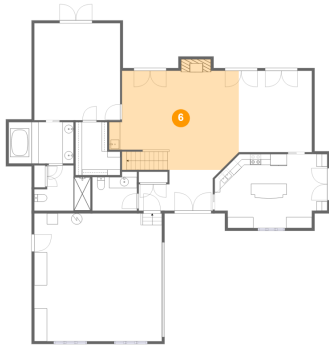
5 Floor 1 - Foyer



Dimensions: 13'6" x 7'5"
Area: 86 sq. ft
Counted as living area: Yes

Heated: Yes
Finished: Yes
Enclosed: Yes
Contiguous: Yes
Permitted: Yes
Wet space: No
Addition: No
Conversion: No

6 Floor 1 - Living Room



Dimensions: 23'7" x 18'0"
Area: 399 sq. ft
Counted as living area: Yes

Heated: Yes
Finished: Yes
Enclosed: Yes
Contiguous: Yes
Permitted: Yes
Wet space: No
Addition: No
Conversion: No

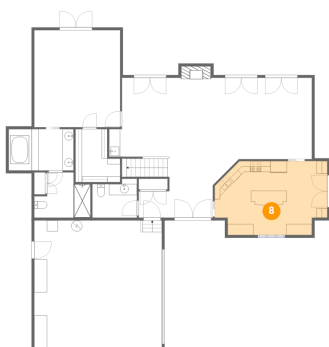
7 Floor 1 - WC



Dimensions: 8'1" x 6'1"
Area: 52 sq. ft
Counted as living area: Yes

Heated: Yes
Finished: Yes
Enclosed: Yes
Contiguous: Yes
Permitted: Yes
Wet space: Yes
Addition: No
Conversion: No

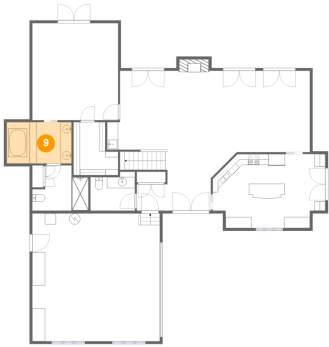
8 Floor 1 - Kitchen



Dimensions: 20'6" x 13'5"
Area: 249 sq. ft
Counted as living area: Yes

Heated: Yes
Finished: Yes
Enclosed: Yes
Contiguous: Yes
Permitted: Yes
Wet space: No
Addition: No
Conversion: No

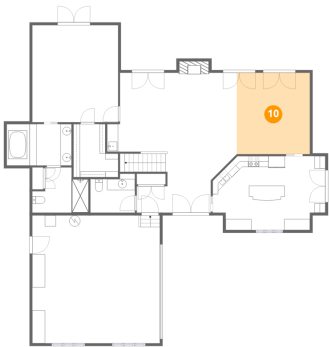
9 Floor 1 - Primary Bath



Dimensions: 11'9" x 7'6"
Area: 89 sq. ft
Counted as living area: Yes

Heated: Yes
Finished: Yes
Enclosed: Yes
Contiguous: Yes
Permitted: Yes
Wet space: Yes
Addition: No
Conversion: No

10 Floor 1 - Dining Area



Dimensions: 13'4" x 14'9"
Area: 197 sq. ft
Counted as living area: Yes

Heated: Yes
Finished: Yes
Enclosed: Yes
Contiguous: Yes
Permitted: Yes
Wet space: No
Addition: No
Conversion: No

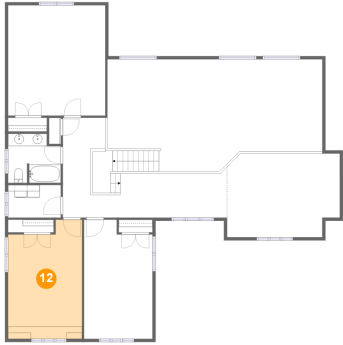
11 Floor 2 - Laundry



Dimensions: 8'6" x 5'3"
Area: 44 sq. ft
Counted as living area: Yes

Heated: Yes
Finished: Yes
Enclosed: Yes
Contiguous: Yes
Permitted: Yes
Wet space: No
Addition: No
Conversion: No

12 Floor 2 - Bedroom



Dimensions: 11'10" x 19'2"
Area: 209 sq. ft
Counted as living area: Yes

Heated: Yes
Finished: Yes
Enclosed: Yes
Contiguous: Yes
Permitted: Yes
Wet space: No
Addition: No
Conversion: No

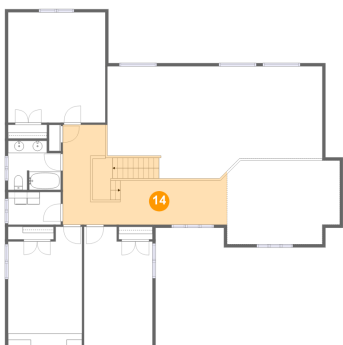
13 Floor 2 - Open To Below



Dimensions: 34'6" x 18'0"
Area: 544 sq. ft
Counted as living area: No

Heated: No
Finished: No
Enclosed: No
Contiguous: Yes
Permitted: No
Wet space: No
Addition: No
Conversion: No

14 Floor 2 - Hall



Dimensions: 26'5" x 16'0"
Area: 289 sq. ft
Counted as living area: Yes

Heated: Yes
Finished: Yes
Enclosed: Yes
Contiguous: Yes
Permitted: Yes
Wet space: No
Addition: No
Conversion: No

15 Floor 2 - Bath



Dimensions: 8'6" x 7'11"
Area: 61 sq. ft
Counted as living area: Yes

Heated: Yes
Finished: Yes
Enclosed: Yes
Contiguous: Yes
Permitted: Yes
Wet space: Yes
Addition: No
Conversion: No

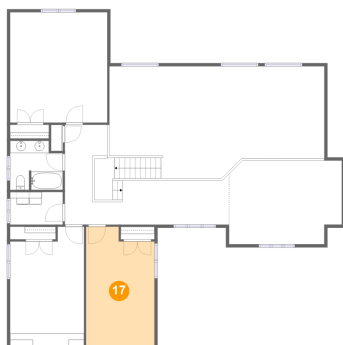
16 Floor 2 - Loft



Dimensions: 18'2" x 13'5"
Area: 238 sq. ft
Counted as living area: Yes

Heated: Yes
Finished: Yes
Enclosed: Yes
Contiguous: Yes
Permitted: Yes
Wet space: No
Addition: No
Conversion: No

17 Floor 2 - Bedroom



Dimensions: 11'0" x 19'2"
Area: 197 sq. ft
Counted as living area: Yes

Heated: Yes
Finished: Yes
Enclosed: Yes
Contiguous: Yes
Permitted: Yes
Wet space: No
Addition: No
Conversion: No

18 Floor 2 - Bedroom



Dimensions: 15'7" x 17'8"
Area: 277 sq. ft
Counted as living area: Yes

Heated: Yes
Finished: Yes
Enclosed: Yes
Contiguous: Yes
Permitted: Yes
Wet space: No
Addition: No
Conversion: No