

# 2518 Stephenson Avenue Southwest, South Roanoke, Roanoke, Roanoke, Virginia, United



## Property Summary

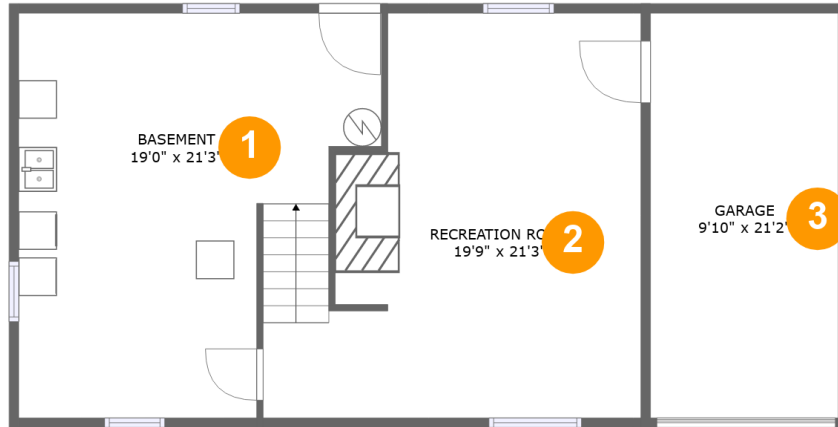
 **1** garages     **3** bedrooms     **2** bathrooms     **0** half baths

 **3** floors

 **1,986** Gross Living Area sqft

 **2,991** total sqft

# 2518 Stephenson Avenue Southwest, South Roanoke, Roanoke, Roanoke, Virginia, United



## Room Dimensions

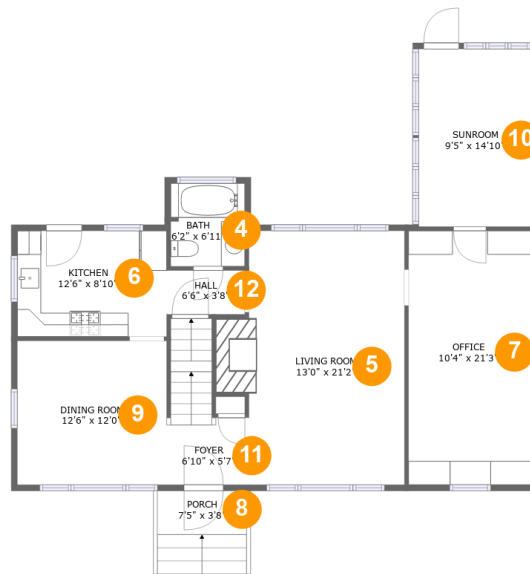
Floor 1

Total sqft: 978

Living area: 0

#	Room name	Dimensions	Area (sqft)	Counted as Living Area
1	Basement	19'0" x 21'3"	322 sq. ft	No
2	Recreation Room	19'9" x 21'3"	360 sq. ft	No
3	Garage	9'10" x 21'2"	209 sq. ft	No

# 2518 Stephenson Avenue Southwest, South Roanoke, Roanoke, Roanoke, Virginia, United



## Room Dimensions

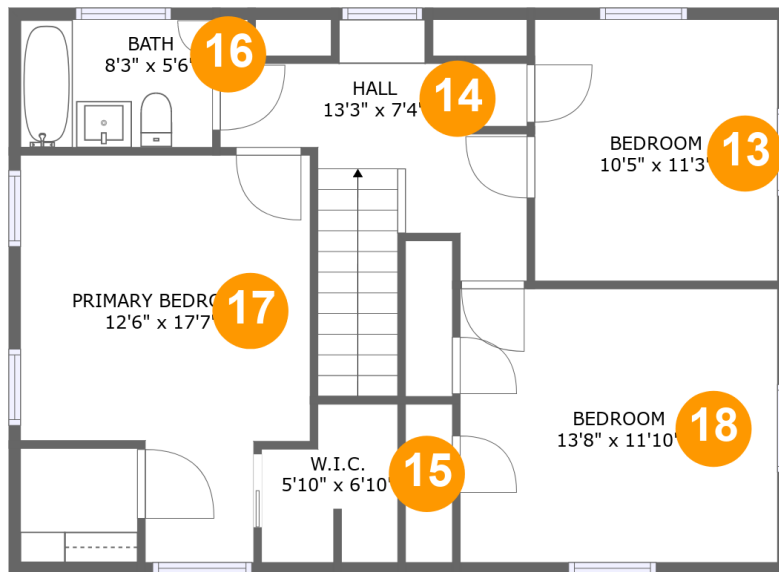
Floor 2

Total sqft: 1192

Living area: 1165

#	Room name	Dimensions	Area (sqft)	Counted as Living Area
4	Bath	6'2" x 6'11"	43 sq. ft	Yes
5	Living Room	13'0" x 21'2"	293 sq. ft	Yes
6	Kitchen	12'6" x 8'10"	111 sq. ft	Yes
7	Office	10'4" x 21'3"	218 sq. ft	Yes
8	Porch	7'5" x 3'8"	27 sq. ft	No
9	Dining Room	12'6" x 12'0"	150 sq. ft	Yes
10	Sunroom	9'5" x 14'10"	140 sq. ft	Yes
11	Foyer	6'10" x 5'7"	67 sq. ft	Yes
12	Hall	6'6" x 3'8"	24 sq. ft	Yes

## 2518 Stephenson Avenue Southwest, South Roanoke, Roanoke, Roanoke, Virginia, United



### Room Dimensions

Floor 3

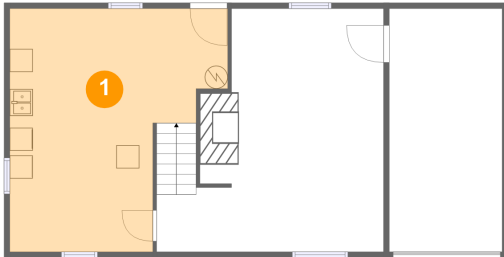
Total sqft: 821

Living area: 821

#	Room name	Dimensions	Area (sqft)	Counted as Living Area
13	Bedroom	10'5" x 11'3"	118 sq. ft	Yes
14	Hall	13'3" x 7'4"	109 sq. ft	Yes
15	W.i.c.	5'10" x 6'10"	35 sq. ft	Yes
16	Bath	8'3" x 5'6"	46 sq. ft	Yes
17	Primary Bedroom	12'6" x 17'7"	178 sq. ft	Yes
18	Bedroom	13'8" x 11'10"	161 sq. ft	Yes

# 2518 Stephenson Avenue Southwest, South Roanoke, Roanoke, Roanoke, Virginia, United

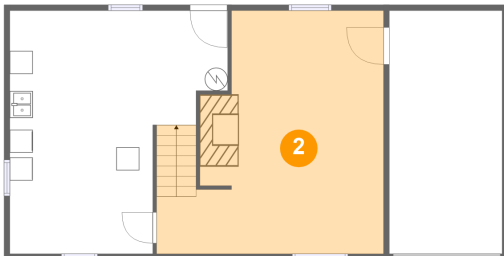
## 1 Floor 1 - Basement



Dimensions: 19'0" x 21'3"  
Area: 322 sq. ft  
Counted as Living Area: No

Heated: No  
Finished: No  
Enclosed: Yes  
Contiguous: Yes  
Permitted: Yes  
Wet Space: No  
Addition: No  
Conversion: No

## 2 Floor 1 - Recreation Room

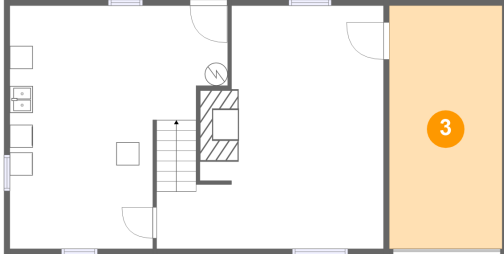


Dimensions: 19'9" x 21'3"  
Area: 360 sq. ft  
Counted as Living Area: No

Heated: Yes  
Finished: Yes  
Enclosed: Yes  
Contiguous: No  
Permitted: Yes  
Wet Space: No  
Addition: No  
Conversion: No

# 2518 Stephenson Avenue Southwest, South Roanoke, Roanoke, Roanoke, Virginia, United

## 3 Floor 1 - Garage



Dimensions: 9'10" x 21'2"  
Area: 209 sq. ft  
Counted as Living Area: No

Heated: No  
Finished: No  
Enclosed: Yes  
Contiguous: Yes  
Permitted: Yes  
Wet Space: No  
Addition: No  
Conversion: No

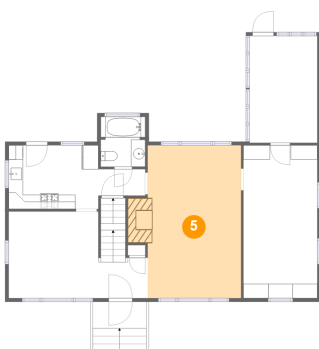
## 4 Floor 2 - Bath



Dimensions: 6'2" x 6'11"  
Area: 43 sq. ft  
Counted as Living Area: Yes

Heated: Yes  
Finished: Yes  
Enclosed: Yes  
Contiguous: Yes  
Permitted: Yes  
Wet Space: Yes  
Addition: No  
Conversion: No

## 5 Floor 2 - Living Room



Dimensions: 13'0" x 21'2"  
Area: 293 sq. ft  
Counted as Living Area: Yes

Heated: Yes  
Finished: Yes  
Enclosed: Yes  
Contiguous: Yes  
Permitted: Yes  
Wet Space: No  
Addition: No  
Conversion: No

# 2518 Stephenson Avenue Southwest, South Roanoke, Roanoke, Roanoke, Virginia, United

## 6 Floor 2 - Kitchen



Dimensions: 12'6" x 8'10"  
Area: 111 sq. ft  
Counted as Living Area:  
Yes

Heated: Yes  
Finished: Yes  
Enclosed: Yes  
Contiguous:  
Yes  
Permitted: Yes  
Wet Space: No  
Addition: No  
Conversion: No

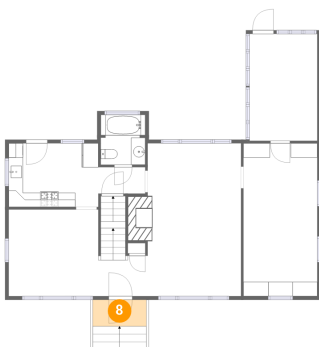
## 7 Floor 2 - Office



Dimensions: 10'4" x 21'3"  
Area: 218 sq. ft  
Counted as Living Area:  
Yes

Heated: Yes  
Finished: Yes  
Enclosed: Yes  
Contiguous:  
Yes  
Permitted: Yes  
Wet Space: No  
Addition: No  
Conversion: No

## 8 Floor 2 - Porch



Dimensions: 7'5" x 3'8"  
Area: 27 sq. ft  
Counted as Living Area: No

Heated: No  
Finished: Yes  
Enclosed: No  
Contiguous: Yes  
Permitted: Yes  
Wet Space: No  
Addition: No  
Conversion: No

# 2518 Stephenson Avenue Southwest, South Roanoke, Roanoke, Roanoke, Virginia, United

## 9 Floor 2 - Dining Room



Dimensions: 12'6" x 12'0"  
Area: 150 sq. ft  
Counted as Living Area:  
Yes

Heated: Yes  
Finished: Yes  
Enclosed: Yes  
Contiguous:  
Yes  
Permitted: Yes  
Wet Space: No  
Addition: No  
Conversion: No

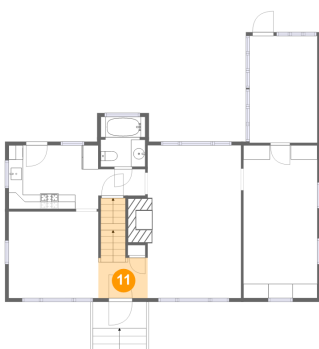
## 10 Floor 2 - Sunroom



Dimensions: 9'5" x 14'10"  
Area: 140 sq. ft  
Counted as Living Area:  
Yes

Heated: Yes  
Finished: Yes  
Enclosed: Yes  
Contiguous:  
Yes  
Permitted: Yes  
Wet Space: No  
Addition: No  
Conversion: No

## 11 Floor 2 - Foyer



Dimensions: 6'10" x 5'7"  
Area: 67 sq. ft  
Counted as Living Area:  
Yes

Heated: Yes  
Finished: Yes  
Enclosed: Yes  
Contiguous:  
Yes  
Permitted: Yes  
Wet Space: No  
Addition: No  
Conversion: No



# 2518 Stephenson Avenue Southwest, South Roanoke, Roanoke, Roanoke, Virginia, United

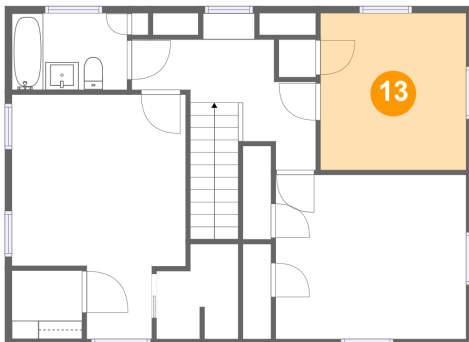
## 12 Floor 2 - Hall



Dimensions: 6'6" x 3'8"  
Area: 24 sq. ft  
Counted as Living Area:  
Yes

Heated: Yes  
Finished: Yes  
Enclosed: Yes  
Contiguous:  
Yes  
Permitted: Yes  
Wet Space: No  
Addition: No  
Conversion: No

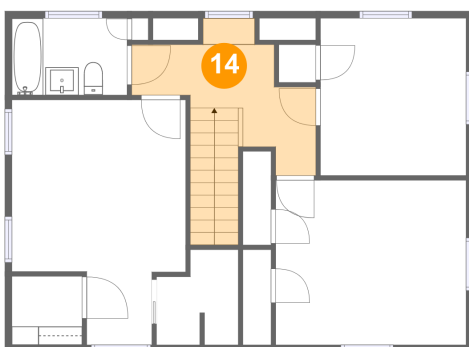
## 13 Floor 3 - Bedroom



Dimensions: 10'5" x 11'3"  
Area: 118 sq. ft  
Counted as Living Area:  
Yes

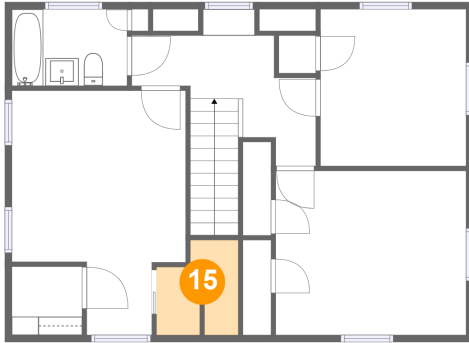
Heated: Yes  
Finished: Yes  
Enclosed: Yes  
Contiguous:  
Yes  
Permitted: Yes  
Wet Space: No  
Addition: No  
Conversion: No

## 14 Floor 3 - Hall



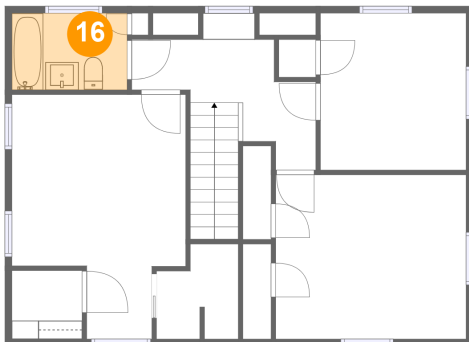
Dimensions: 13'3" x 7'4"  
Area: 109 sq. ft  
Counted as Living Area:  
Yes

Heated: Yes  
Finished: Yes  
Enclosed: Yes  
Contiguous:  
Yes  
Permitted: Yes  
Wet Space: No  
Addition: No  
Conversion: No

**2518 Stephenson Avenue Southwest, South  
Roanoke, Roanoke, Roanoke, Virginia, United****15 Floor 3 - W.i.c.**

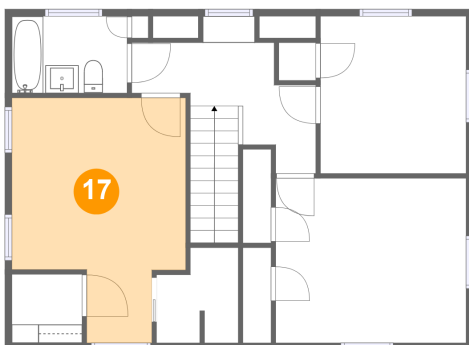
Dimensions: 5'10" x 6'10"  
Area: 35 sq. ft  
Counted as Living Area:  
Yes

Heated: Yes  
Finished: Yes  
Enclosed: Yes  
Contiguous:  
Yes  
Permitted: Yes  
Wet Space: No  
Addition: No  
Conversion: No

**16 Floor 3 - Bath**

Dimensions: 8'3" x 5'6"  
Area: 46 sq. ft  
Counted as Living Area:  
Yes

Heated: Yes  
Finished: Yes  
Enclosed: Yes  
Contiguous:  
Yes  
Permitted: Yes  
Wet Space: Yes  
Addition: No  
Conversion: No

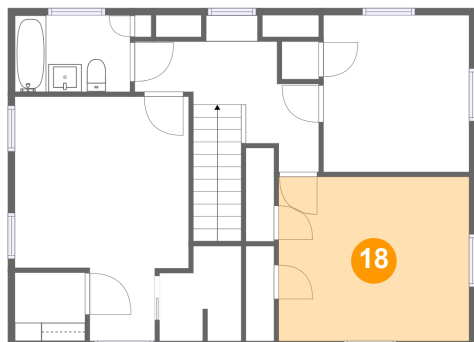
**17 Floor 3 - Primary Bedroom**

Dimensions: 12'6" x 17'7"  
Area: 178 sq. ft  
Counted as Living Area:  
Yes

Heated: Yes  
Finished: Yes  
Enclosed: Yes  
Contiguous:  
Yes  
Permitted: Yes  
Wet Space: No  
Addition: No  
Conversion: No

# 2518 Stephenson Avenue Southwest, South Roanoke, Roanoke, Roanoke, Virginia, United

## 18 Floor 3 - Bedroom



Dimensions: 13'8" x 11'10"  
Area: 161 sq. ft  
Counted as Living Area:  
Yes

Heated: Yes  
Finished: Yes  
Enclosed: Yes  
Contiguous:  
Yes  
Permitted: Yes  
Wet Space: No  
Addition: No  
Conversion: No