

Home report

239 Cedar Bay Road, Union Hall, Franklin County, Virginia,
United States, 24176




Total Area: 4715 sq. ft

Floor 1: 2192 sq. ft, Floor 2: 2523 sq. ft

Excluded: Utility 102 sq. ft, Deck 1404 sq. ft, Garage 651 sq. ft, Screened porch 224 sq. ft, Porch 78 sq. ft, Walls: 283 sq. ft

Property summary

 2 Floors

 5 Bedrooms

 3 Bathrooms

Home report

**239 Cedar Bay Road, Union Hall, Franklin County, Virginia,
United States, 24176**



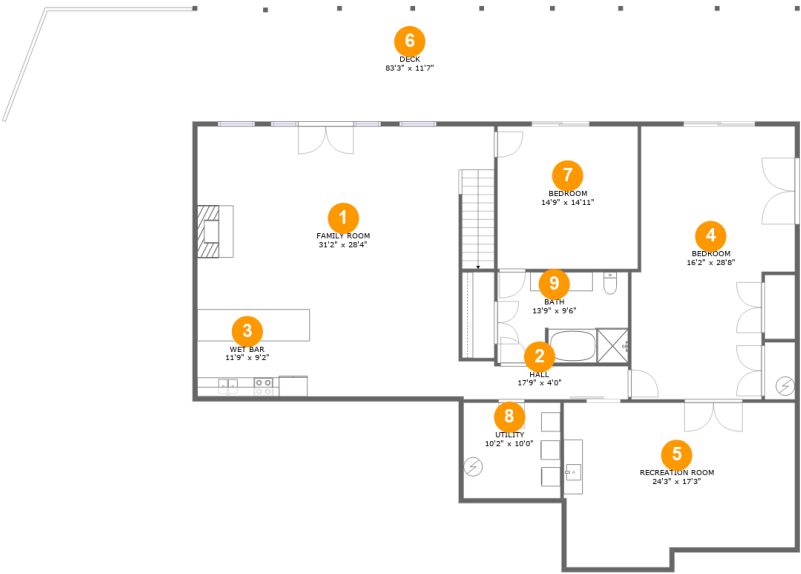
1
Half baths



1
Garages

Home report

239 Cedar Bay Road, Union Hall, Franklin County, Virginia,
United States, 24176



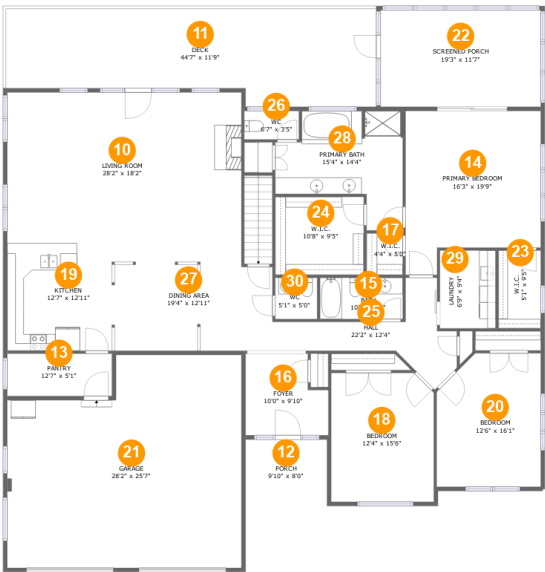
Room dimensions

Floor 1 Total:2192sqft Excluded: 1045sqft

#		Max Dimensions	sqft	Included
1	Family Room	31'2" x 28'4"	723 sq. ft	Yes
2	Hall	17'9" x 4'0"	64 sq. ft	Yes
3	Wet Bar	11'9" x 9'2"	108 sq. ft	Yes
4	Bedroom	16'2" x 28'8"	429 sq. ft	Yes
5	Recreation Room	24'3" x 17'3"	390 sq. ft	Yes
6	Deck	83'3" x 11'7"	943 sq. ft	No
7	Bedroom	14'9" x 14'11"	220 sq. ft	Yes
8	Utility	10'2" x 10'0"	102 sq. ft	No
9	Bath	13'9" x 9'6"	129 sq. ft	Yes

Home report

239 Cedar Bay Road, Union Hall, Franklin County, Virginia,
United States, 24176



Room dimensions

Floor 2 Total:2523sqft Excluded: 1414sqft

#		Max Dimensions	sqft	Included
10	Living Room	28'2" x 18'2"	511 sq. ft	Yes
11	Deck	44'7" x 11'9"	461 sq. ft	No
12	Porch	9'10" x 8'0"	78 sq. ft	No
13	Pantry	12'7" x 5'1"	64 sq. ft	Yes
14	Primary Bedroom	16'3" x 19'9"	280 sq. ft	Yes
15	Bath	10'0" x 5'0"	50 sq. ft	Yes
16	Foyer	10'0" x 9'10"	87 sq. ft	Yes
17	W.I.C.	4'4" x 5'0"	22 sq. ft	Yes
18	Bedroom	12'4" x 15'6"	189 sq. ft	Yes
19	Kitchen	12'7" x 12'11"	163 sq. ft	Yes
20	Bedroom	12'6" x 16'1"	190 sq. ft	Yes

Home report

**239 Cedar Bay Road, Union Hall, Franklin County, Virginia,
United States, 24176**

#		Max Dimensions	sqft	Included
21	Garage	28'2" x 25'7"	651 sq. ft	No
22	Screened Porch	19'3" x 11'7"	224 sq. ft	No
23	W.I.C.	5'1" x 9'5"	48 sq. ft	Yes
24	W.I.C.	10'8" x 9'5"	100 sq. ft	Yes
25	Hall	22'2" x 12'4"	115 sq. ft	Yes
26	WC	6'7" x 3'5"	23 sq. ft	Yes
27	Dining Area	19'4" x 12'11"	239 sq. ft	Yes
28	Primary Bath	15'4" x 14'4"	159 sq. ft	Yes
29	Laundry	6'9" x 9'4"	63 sq. ft	Yes
30	WC	5'1" x 5'0"	25 sq. ft	Yes

239 Cedar Bay Road, Union Hall, Franklin County, Virginia,
United States, 24176

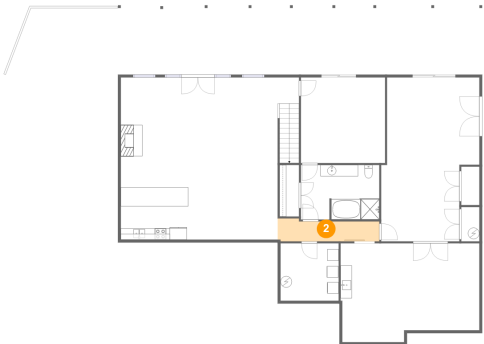
1 Floor 1 - Family Room



Max Dimensions: 31'2" x 28'4"
Calculated Area: 723 sq. ft
Included: Yes

Heated: Yes
Finished: Yes
Enclosed: Yes
Contiguous: Yes
Permitted: Yes
Wet space: No
Addition: No
Conversion: No

2 Floor 1 - Hall



Max Dimensions: 17'9" x 4'0"
Calculated Area: 64 sq. ft
Included: Yes

Heated: Yes
Finished: Yes
Enclosed: Yes
Contiguous: Yes
Permitted: Yes
Wet space: No
Addition: No
Conversion: No

239 Cedar Bay Road, Union Hall, Franklin County, Virginia,
United States, 24176

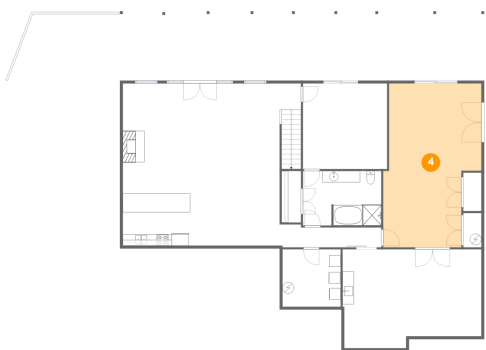
3 Floor 1 - Wet Bar



Max Dimensions: 11'9" x 9'2"
Calculated Area: 108 sq. ft
Included: Yes

Heated: Yes
Finished: Yes
Enclosed: Yes
Contiguous: Yes
Permitted: Yes
Wet space: No
Addition: No
Conversion: No

4 Floor 1 - Bedroom



Max Dimensions: 16'2" x 28'8"
Calculated Area: 429 sq. ft
Included: Yes

Heated: Yes
Finished: Yes
Enclosed: Yes
Contiguous: Yes
Permitted: Yes
Wet space: No
Addition: No
Conversion: No

5 Floor 1 - Recreation Room

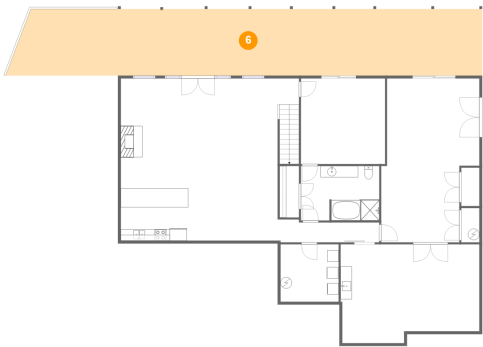


Max Dimensions: 24'3" x 17'3"
Calculated Area: 390 sq. ft
Included: Yes

Heated: Yes
Finished: Yes
Enclosed: Yes
Contiguous: Yes
Permitted: Yes
Wet space: No
Addition: No
Conversion: No

239 Cedar Bay Road, Union Hall, Franklin County, Virginia,
United States, 24176

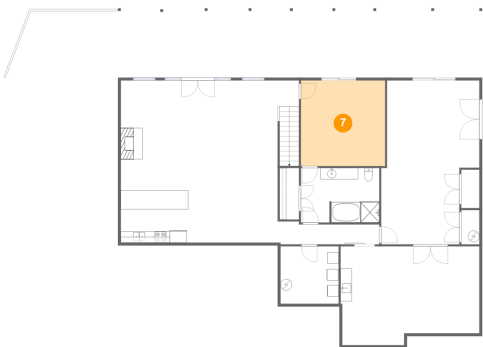
6 Floor 1 - Deck



Max Dimensions: 83'3" x 11'7"
Calculated Area: 943 sq. ft
Included: No

Heated: No
Finished: Yes
Enclosed: No
Contiguous: Yes
Permitted: Yes
Wet space: No
Addition: No
Conversion: No

7 Floor 1 - Bedroom



Max Dimensions: 14'9" x 14'11"
Calculated Area: 220 sq. ft
Included: Yes

Heated: Yes
Finished: Yes
Enclosed: Yes
Contiguous: Yes
Permitted: Yes
Wet space: No
Addition: No
Conversion: No

8 Floor 1 - Utility



Max Dimensions: 10'2" x 10'0"
Calculated Area: 102 sq. ft
Included: No

Heated: Yes
Finished: No
Enclosed: Yes
Contiguous: Yes
Permitted: Yes
Wet space: No
Addition: No
Conversion: No

239 Cedar Bay Road, Union Hall, Franklin County, Virginia,
United States, 24176

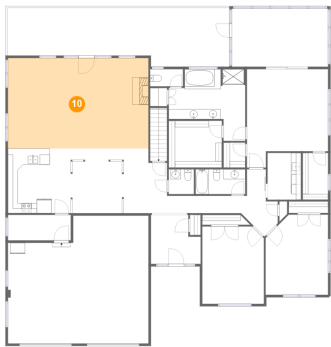
9 Floor 1 - Bath



Max Dimensions: 13'9" x 9'6"
Calculated Area: 129 sq. ft
Included: Yes

Heated: Yes
Finished: Yes
Enclosed: Yes
Contiguous: Yes
Permitted: Yes
Wet space: Yes
Addition: No
Conversion: No

10 Floor 2 - Living Room



Max Dimensions: 28'2" x 18'2"
Calculated Area: 511 sq. ft
Included: Yes

Heated: Yes
Finished: Yes
Enclosed: Yes
Contiguous: Yes
Permitted: Yes
Wet space: No
Addition: No
Conversion: No

11 Floor 2 - Deck



Max Dimensions: 44'7" x 11'9"
Calculated Area: 461 sq. ft
Included: No

Heated: No
Finished: Yes
Enclosed: No
Contiguous: No
Permitted: Yes
Wet space: No
Addition: No
Conversion: No

239 Cedar Bay Road, Union Hall, Franklin County, Virginia,
United States, 24176

12 Floor 2 - Porch



Max Dimensions: 9'10" x 8'0"
Calculated Area: 78 sq. ft
Included: No

Heated: No
Finished: Yes
Enclosed: No
Contiguous: Yes
Permitted: Yes
Wet space: No
Addition: No
Conversion: No

13 Floor 2 - Pantry



Max Dimensions: 12'7" x 5'1"
Calculated Area: 64 sq. ft
Included: Yes

Heated: Yes
Finished: Yes
Enclosed: Yes
Contiguous: Yes
Permitted: Yes
Wet space: No
Addition: No
Conversion: No

14 Floor 2 - Primary Bedroom



Max Dimensions: 16'3" x 19'9"
Calculated Area: 280 sq. ft
Included: Yes

Heated: Yes
Finished: Yes
Enclosed: Yes
Contiguous: Yes
Permitted: Yes
Wet space: No
Addition: No
Conversion: No

239 Cedar Bay Road, Union Hall, Franklin County, Virginia,
United States, 24176

15 Floor 2 - Bath



Max Dimensions: 10'0" x 5'0"
Calculated Area: 50 sq. ft
Included: Yes

Heated: Yes
Finished: Yes
Enclosed: Yes
Contiguous: Yes
Permitted: Yes
Wet space: Yes
Addition: No
Conversion: No

16 Floor 2 - Foyer



Max Dimensions: 10'0" x 9'10"
Calculated Area: 87 sq. ft
Included: Yes

Heated: Yes
Finished: Yes
Enclosed: Yes
Contiguous: Yes
Permitted: Yes
Wet space: No
Addition: No
Conversion: No

17 Floor 2 - W.I.C.

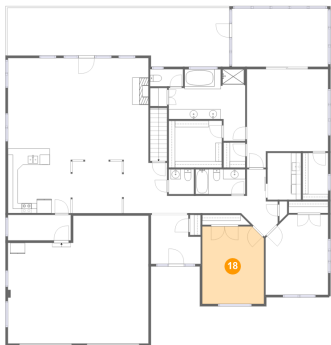


Max Dimensions: 4'4" x 5'0"
Calculated Area: 22 sq. ft
Included: Yes

Heated: Yes
Finished: Yes
Enclosed: Yes
Contiguous: Yes
Permitted: Yes
Wet space: No
Addition: No
Conversion: No

239 Cedar Bay Road, Union Hall, Franklin County, Virginia,
United States, 24176

18 Floor 2 - Bedroom



Max Dimensions: 12'4" x 15'6"
Calculated Area: 189 sq. ft
Included: Yes

Heated: Yes
Finished: Yes
Enclosed: Yes
Contiguous: Yes
Permitted: Yes
Wet space: No
Addition: No
Conversion: No

19 Floor 2 - Kitchen



Max Dimensions: 12'7" x 12'11"
Calculated Area: 163 sq. ft
Included: Yes

Heated: Yes
Finished: Yes
Enclosed: Yes
Contiguous: Yes
Permitted: Yes
Wet space: No
Addition: No
Conversion: No

20 Floor 2 - Bedroom

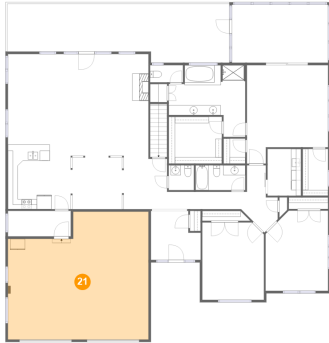


Max Dimensions: 12'6" x 16'1"
Calculated Area: 190 sq. ft
Included: Yes

Heated: Yes
Finished: Yes
Enclosed: Yes
Contiguous: Yes
Permitted: Yes
Wet space: No
Addition: No
Conversion: No

239 Cedar Bay Road, Union Hall, Franklin County, Virginia,
United States, 24176

21 Floor 2 - Garage



Max Dimensions: 28'2" x 25'7"
Calculated Area: 651 sq. ft
Included: No

Heated: No
Finished: No
Enclosed: Yes
Contiguous: Yes
Permitted: Yes
Wet space: No
Addition: No
Conversion: No

22 Floor 2 - Screened Porch



Max Dimensions: 19'3" x 11'7"
Calculated Area: 224 sq. ft
Included: No

Heated: No
Finished: Yes
Enclosed: No
Contiguous: Yes
Permitted: Yes
Wet space: No
Addition: No
Conversion: No

23 Floor 2 - W.I.C.

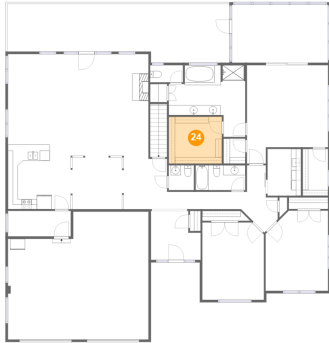


Max Dimensions: 5'1" x 9'5"
Calculated Area: 48 sq. ft
Included: Yes

Heated: Yes
Finished: Yes
Enclosed: Yes
Contiguous: Yes
Permitted: Yes
Wet space: No
Addition: No
Conversion: No

239 Cedar Bay Road, Union Hall, Franklin County, Virginia,
United States, 24176

24 Floor 2 - W.I.C.



Max Dimensions: 10'8" x 9'5"
Calculated Area: 100 sq. ft
Included: Yes

Heated: Yes
Finished: Yes
Enclosed: Yes
Contiguous: Yes
Permitted: Yes
Wet space: No
Addition: No
Conversion: No

25 Floor 2 - Hall



Max Dimensions: 22'2" x 12'4"
Calculated Area: 115 sq. ft
Included: Yes

Heated: Yes
Finished: Yes
Enclosed: Yes
Contiguous: Yes
Permitted: Yes
Wet space: No
Addition: No
Conversion: No

26 Floor 2 - WC



Max Dimensions: 6'7" x 3'5"
Calculated Area: 23 sq. ft
Included: Yes

Heated: Yes
Finished: Yes
Enclosed: Yes
Contiguous: Yes
Permitted: Yes
Wet space: Yes
Addition: No
Conversion: No

239 Cedar Bay Road, Union Hall, Franklin County, Virginia,
United States, 24176

27 Floor 2 - Dining Area



Max Dimensions: 19'4" x 12'11"
Calculated Area: 239 sq. ft
Included: Yes

Heated: Yes
Finished: Yes
Enclosed: Yes
Contiguous: Yes
Permitted: Yes
Wet space: No
Addition: No
Conversion: No

28 Floor 2 - Primary Bath



Max Dimensions: 15'4" x 14'4"
Calculated Area: 159 sq. ft
Included: Yes

Heated: Yes
Finished: Yes
Enclosed: Yes
Contiguous: Yes
Permitted: Yes
Wet space: Yes
Addition: No
Conversion: No

29 Floor 2 - Laundry



Max Dimensions: 6'9" x 9'4"
Calculated Area: 63 sq. ft
Included: Yes

Heated: Yes
Finished: Yes
Enclosed: Yes
Contiguous: Yes
Permitted: Yes
Wet space: No
Addition: No
Conversion: No

239 Cedar Bay Road, Union Hall, Franklin County, Virginia,
United States, 24176

30 Floor 2 - WC



Max Dimensions: 5'1" x 5'0"
Calculated Area: 25 sq. ft
Included: Yes

Heated: Yes
Finished: Yes
Enclosed: Yes
Contiguous: Yes
Permitted: Yes
Wet space: Yes
Addition: No
Conversion: No