



Home report


15 Quarry Circle, Milford, Hillsborough County, New Hampshire,
United States, 03055




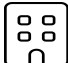
Property summary


**0** Garages


**2** Bedrooms

**1** Bathrooms

**1** Half baths

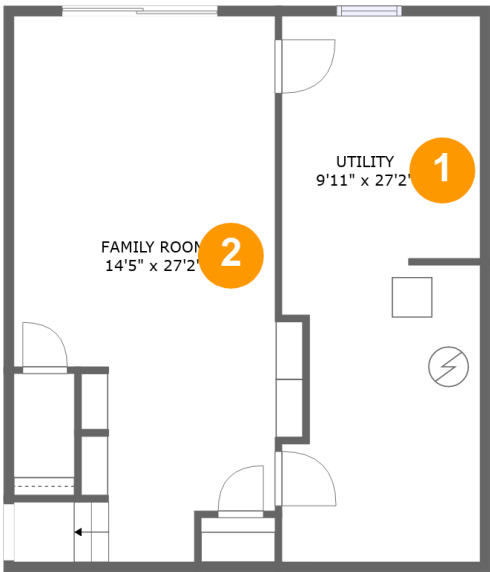
**3** Floors

**1,726** Gross living area sqft

**2,204** Total sqft

Home report

15 Quarry Circle, Milford, Hillsborough County, New Hampshire,
United States, 03055



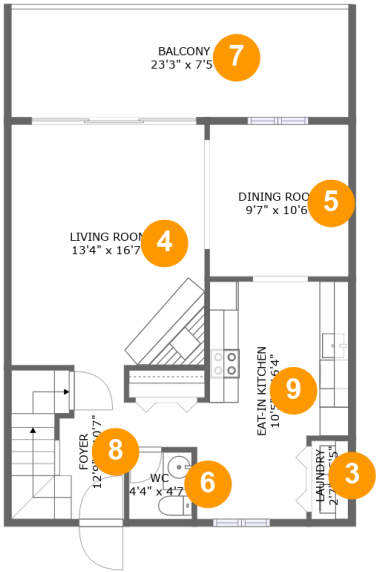
Room dimensions

Floor 1 Total sqft: 675 Living area: 399

#		Dimensions	sqft	Counted as living area
1	Utility	9'11" x 27'2"	258 sq. ft	No
2	Family Room	14'5" x 27'2"	327 sq. ft	Yes

Home report

15 Quarry Circle, Milford, Hillsborough County, New Hampshire,
United States, 03055



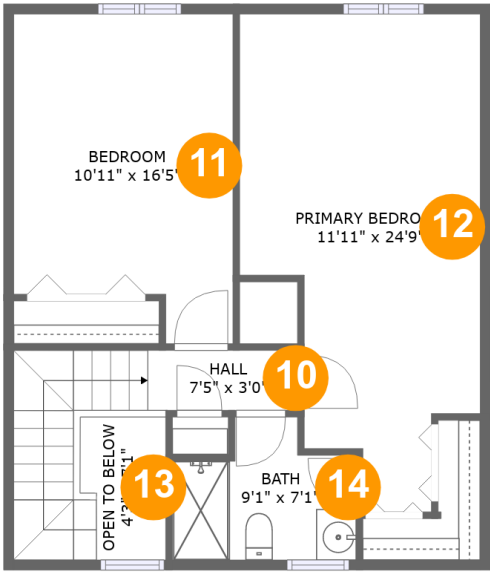
Room dimensions

Floor 2 Total sqft: 854 Living area: 681

#		Dimensions	sqft	Counted as living area
3	Laundry	2'7" x 5'5"	14 sq. ft	Yes
4	Living Room	13'4" x 16'7"	221 sq. ft	Yes
5	Dining Room	9'7" x 10'6"	100 sq. ft	Yes
6	WC	4'4" x 4'7"	20 sq. ft	Yes
7	Balcony	23'3" x 7'5"	173 sq. ft	No
8	Foyer	12'9" x 10'7"	94 sq. ft	Yes
9	Eat-in Kitchen	10'5" x 16'4"	147 sq. ft	Yes

Home report

15 Quarry Circle, Milford, Hillsborough County, New Hampshire,
United States, 03055

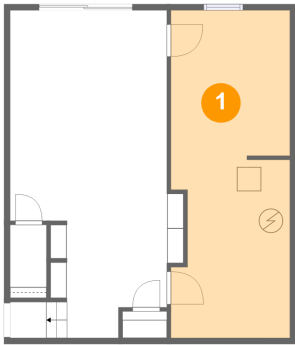


Room dimensions

Floor 3 Total sqft: 675 Living area: 646

#		Dimensions	sqft	Counted as living area
10	Hall	7'5" x 3'0"	71 sq. ft	Yes
11	Bedroom	10'11" x 16'5"	160 sq. ft	Yes
12	Primary Bedroom	11'11" x 24'9"	238 sq. ft	Yes
13	Open To Below	4'3" x 7'1"	28 sq. ft	No
14	Bath	9'1" x 7'1"	53 sq. ft	Yes

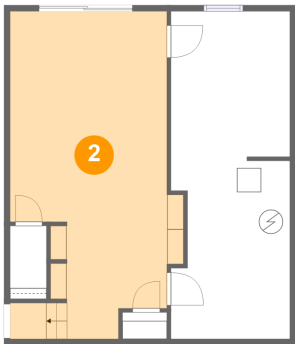
1 Floor 1 - Utility



Dimensions: 9'11" x 27'2"
Area: 258 sq. ft
Counted as living area: No

Heated: Yes
Finished: No
Enclosed: Yes
Contiguous: Yes
Permitted: Yes
Wet space: No
Addition: No
Conversion: No

2 Floor 1 - Family Room



Dimensions: 14'5" x 27'2"
Area: 327 sq. ft
Counted as living area: Yes

Heated: Yes
Finished: Yes
Enclosed: Yes
Contiguous: Yes
Permitted: Yes
Wet space: No
Addition: No
Conversion: No

3 Floor 2 - Laundry



Dimensions: 2'7" x 5'5"
Area: 14 sq. ft
Counted as living area: Yes

Heated: Yes
Finished: Yes
Enclosed: Yes
Contiguous: Yes
Permitted: Yes
Wet space: No
Addition: No
Conversion: No

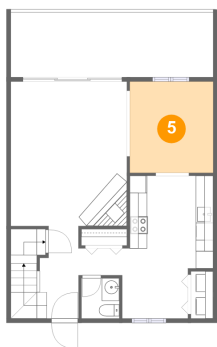
4 Floor 2 - Living Room



Dimensions: 13'4" x 16'7"
Area: 221 sq. ft
Counted as living area: Yes

Heated: Yes
Finished: Yes
Enclosed: Yes
Contiguous: Yes
Permitted: Yes
Wet space: No
Addition: No
Conversion: No

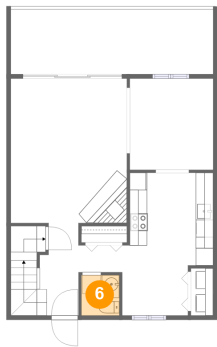
5 Floor 2 - Dining Room



Dimensions: 9'7" x 10'6"
Area: 100 sq. ft
Counted as living area: Yes

Heated: Yes
Finished: Yes
Enclosed: Yes
Contiguous: Yes
Permitted: Yes
Wet space: No
Addition: No
Conversion: No

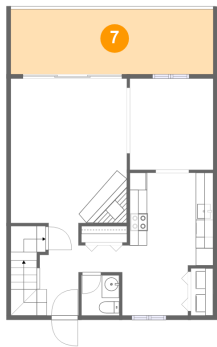
6 Floor 2 - WC



Dimensions: 4'4" x 4'7"
Area: 20 sq. ft
Counted as living area: Yes

Heated: Yes
Finished: Yes
Enclosed: Yes
Contiguous: Yes
Permitted: Yes
Wet space: Yes
Addition: No
Conversion: No

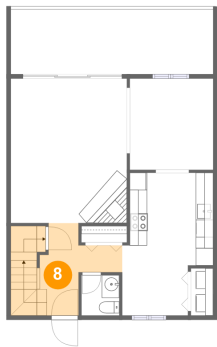
7 Floor 2 - Balcony



Dimensions: 23'3" x 7'5"
Area: 173 sq. ft
Counted as living area: No

Heated: No
Finished: Yes
Enclosed: No
Contiguous: Yes
Permitted: Yes
Wet space: No
Addition: No
Conversion: No

8 Floor 2 - Foyer



Dimensions: 12'9" x 10'7"
Area: 94 sq. ft
Counted as living area: Yes

Heated: Yes
Finished: Yes
Enclosed: Yes
Contiguous: Yes
Permitted: Yes
Wet space: No
Addition: No
Conversion: No

15 Quarry Circle, Milford, Hillsborough County, New Hampshire,
United States, 03055

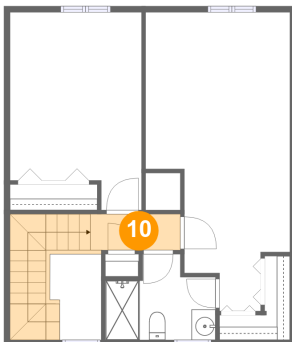
9 Floor 2 - Eat-in Kitchen



Dimensions: 10'5" x 16'4"
Area: 147 sq. ft
Counted as living area: Yes

Heated: Yes
Finished: Yes
Enclosed: Yes
Contiguous: Yes
Permitted: Yes
Wet space: No
Addition: No
Conversion: No

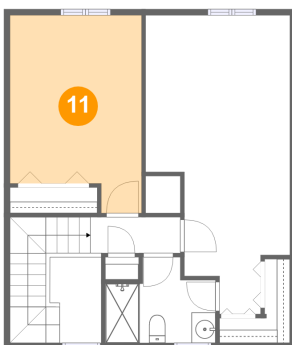
10 Floor 3 - Hall



Dimensions: 7'5" x 3'0"
Area: 71 sq. ft
Counted as living area: Yes

Heated: Yes
Finished: Yes
Enclosed: Yes
Contiguous: Yes
Permitted: Yes
Wet space: No
Addition: No
Conversion: No

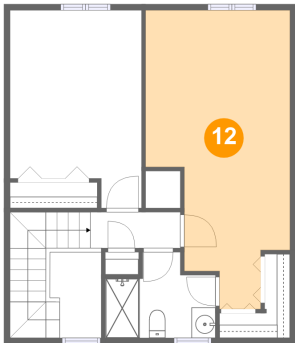
11 Floor 3 - Bedroom



Dimensions: 10'11" x 16'5"
Area: 160 sq. ft
Counted as living area: Yes

Heated: Yes
Finished: Yes
Enclosed: Yes
Contiguous: Yes
Permitted: Yes
Wet space: No
Addition: No
Conversion: No

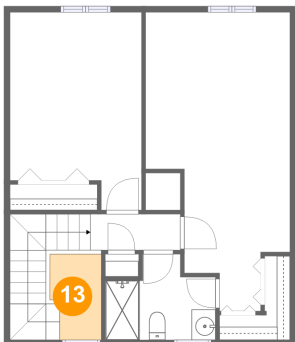
12 Floor 3 - Primary Bedroom



Dimensions: 11'11" x 24'9"
Area: 238 sq. ft
Counted as living area: Yes

Heated: Yes
Finished: Yes
Enclosed: Yes
Contiguous: Yes
Permitted: Yes
Wet space: No
Addition: No
Conversion: No

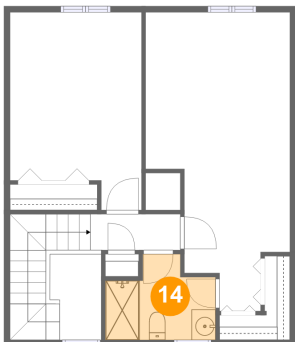
13 Floor 3 - Open To Below



Dimensions: 4'3" x 7'1"
Area: 28 sq. ft
Counted as living area: No

Heated: No
Finished: No
Enclosed: No
Contiguous: Yes
Permitted: No
Wet space: No
Addition: No
Conversion: No

14 Floor 3 - Bath



Dimensions: 9'1" x 7'1"
Area: 53 sq. ft
Counted as living area: Yes

Heated: Yes
Finished: Yes
Enclosed: Yes
Contiguous: Yes
Permitted: Yes
Wet space: Yes
Addition: No
Conversion: No