

Home data report

129 Church St,Summit Point,VA,US



Total Area: 1552 sq. ft

Basement 1: 0 sq. ft, 1st Floor: 822 sq. ft, 2nd Floor: 730 sq. ft, 3rd Floor: 0 sq. ft
Excluded: Basement 576 sq. ft, Garage 268 sq. ft, Porch 126 sq. ft, Covered patio 195 sq. ft, Deck 51 sq. ft, Low ceiling 297 sq. ft, Attic 410 sq. ft, Walls: 307 sq. ft

Property summary

 **4** Floors

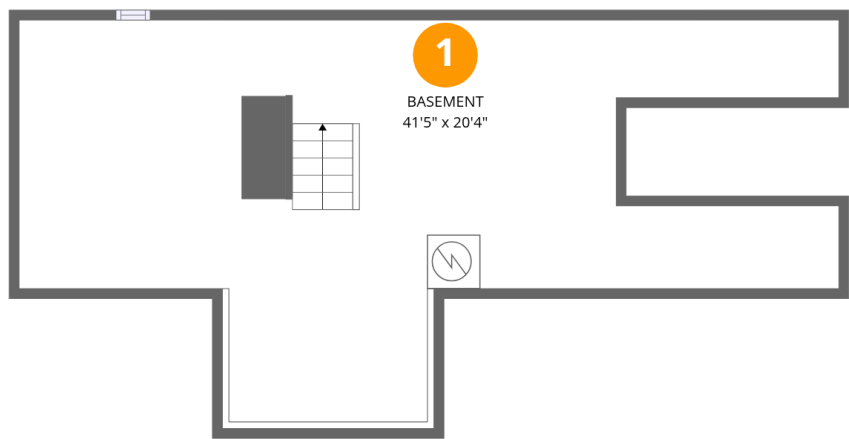
 **2** Bedrooms

 **2** Bathrooms

 **1** Garages

Home data report

129 Church St,Summit Point,VA,US



Room dimensions

Floor 1 Below grade Total:0sqft Excluded: 576sqft

#		Dimensions	sqft	Counted as living area
1	Basement	41'5" x 20'4"	841 sq. ft	No

Home data report

129 Church St,Summit Point,VA,US



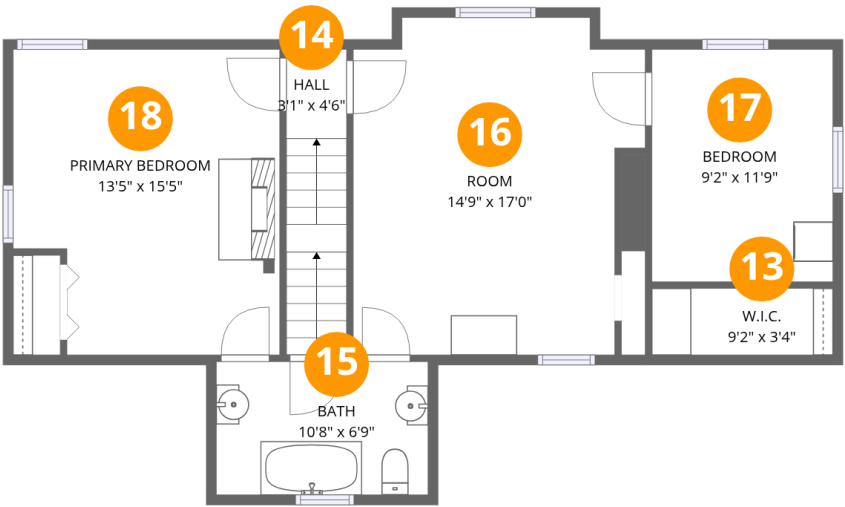
Room dimensions

Floor 2 Total:822sqft Excluded: 640sqft

#		Dimensions	sqft	Counted as living area
2	Living Room	14'9" x 17'4"	256 sq. ft	Yes
3	Porch	20'1" x 6'3"	125 sq. ft	No
4	Covered Patio	16'3" x 22'3"	361 sq. ft	No
5	Hall	6'2" x 7'10"	49 sq. ft	Yes
6	Bath	5'3" x 7'10"	41 sq. ft	Yes
7	Kitchen	9'2" x 15'0"	138 sq. ft	Yes
8	Foyer	10'8" x 6'9"	72 sq. ft	Yes
9	Deck	7'1" x 4'11"	35 sq. ft	No
10	Family Room	13'6" x 15'5"	208 sq. ft	Yes
11	Hall	3'1" x 4'6"	14 sq. ft	Yes
12	Garage	17'10" x 15'0"	267 sq. ft	No

Home data report

129 Church St,Summit Point,VA,US



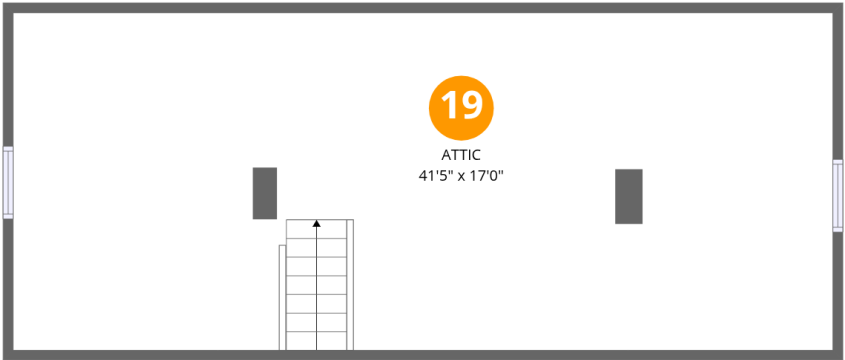
Room dimensions

Floor 3 Total:730sqft Excluded: 0sqft

#		Dimensions	sqft	Counted as living area
13	W.I.C.	9'2" x 3'4"	31 sq. ft	Yes
14	Hall	3'1" x 4'6"	14 sq. ft	Yes
15	Bath	10'8" x 6'9"	72 sq. ft	Yes
16	Room	14'9" x 17'0"	251 sq. ft	Yes
17	Bedroom	9'2" x 11'9"	107 sq. ft	Yes
18	Primary Bedroom	13'5" x 15'5"	207 sq. ft	Yes

Home data report

129 Church St,Summit Point,VA,US



Room dimensions

Floor 4 Total:0sqft Excluded: 707sqft

#		Dimensions	sqft	Counted as living area
19	Attic	41'5" x 17'0"	706 sq. ft	No

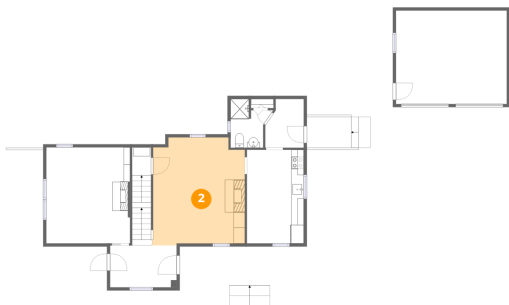
1 Floor 1 - Basement



Dimensions: 41'5" x 20'4"
Area: 841 sq. ft
Counted as living area: No

Heated: Yes
Finished: No
Enclosed: Yes
Contiguous: Yes
Permitted: Yes
Wet space: No
Addition: No
Conversion: No

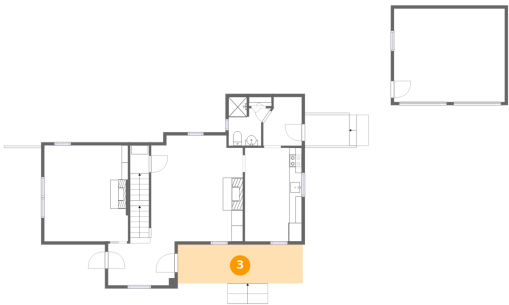
2 Floor 2 - Living Room



Dimensions: 14'9" x 17'4"
Area: 256 sq. ft
Counted as living area: Yes

Heated: Yes
Finished: Yes
Enclosed: Yes
Contiguous: Yes
Permitted: Yes
Wet space: No
Addition: No
Conversion: No

3 Floor 2 - Porch



Dimensions: 20'1" x 6'3"
Area: 125 sq. ft
Counted as living area: No

Heated: No
Finished: No
Enclosed: No
Contiguous: Yes
Permitted: Yes
Wet space: No
Addition: No
Conversion: No

4 Floor 2 - Covered Patio



Dimensions: 16'3" x 22'3"
Area: 361 sq. ft
Counted as living area: No

Heated: No
Finished: No
Enclosed: No
Contiguous: Yes
Permitted: Yes
Wet space: No
Addition: No
Conversion: No

5 Floor 2 - Hall



Dimensions: 6'2" x 7'10"
Area: 49 sq. ft
Counted as living area: Yes

Heated: Yes
Finished: Yes
Enclosed: Yes
Contiguous: Yes
Permitted: Yes
Wet space: No
Addition: No
Conversion: No

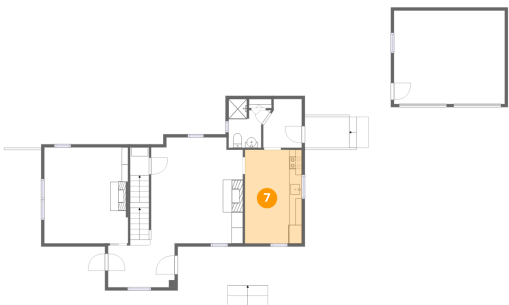
6 Floor 2 - Bath



Dimensions: 5'3" x 7'10"
Area: 41 sq. ft
Counted as living area: Yes

Heated: Yes
Finished: Yes
Enclosed: Yes
Contiguous: Yes
Permitted: Yes
Wet space: Yes
Addition: No
Conversion: No

7 Floor 2 - Kitchen



Dimensions: 9'2" x 15'0"
Area: 138 sq. ft
Counted as living area: Yes

Heated: Yes
Finished: Yes
Enclosed: Yes
Contiguous: Yes
Permitted: Yes
Wet space: No
Addition: No
Conversion: No

8 Floor 2 - Foyer



Dimensions: 10'8" x 6'9"
Area: 72 sq. ft
Counted as living area: Yes

Heated: Yes
Finished: Yes
Enclosed: Yes
Contiguous: Yes
Permitted: Yes
Wet space: No
Addition: No
Conversion: No

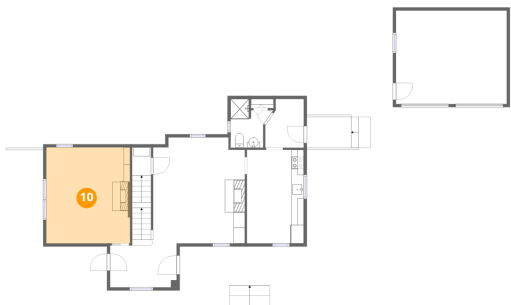
9 Floor 2 - Deck



Dimensions: 7'1" x 4'11"
Area: 35 sq. ft
Counted as living area: No

Heated: No
Finished: No
Enclosed: No
Contiguous: Yes
Permitted: Yes
Wet space: No
Addition: No
Conversion: No

10 Floor 2 - Family Room



Dimensions: 13'6" x 15'5"
Area: 208 sq. ft
Counted as living area: Yes

Heated: Yes
Finished: Yes
Enclosed: Yes
Contiguous: Yes
Permitted: Yes
Wet space: No
Addition: No
Conversion: No

11 Floor 2 - Hall



Dimensions: 3'1" x 4'6"
Area: 14 sq. ft
Counted as living area: Yes

Heated: Yes
Finished: Yes
Enclosed: Yes
Contiguous: Yes
Permitted: Yes
Wet space: No
Addition: No
Conversion: No

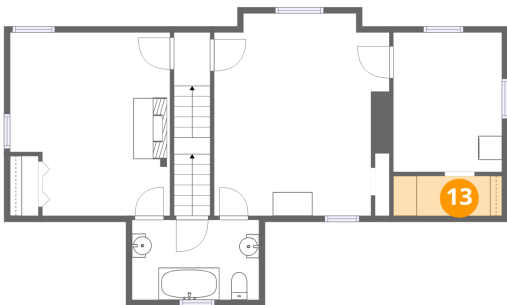
12 Floor 2 - Garage



Dimensions: 17'10" x 15'0"
Area: 267 sq. ft
Counted as living area: No

Heated: No
Finished: No
Enclosed: Yes
Contiguous: Yes
Permitted: Yes
Wet space: No
Addition: No
Conversion: No

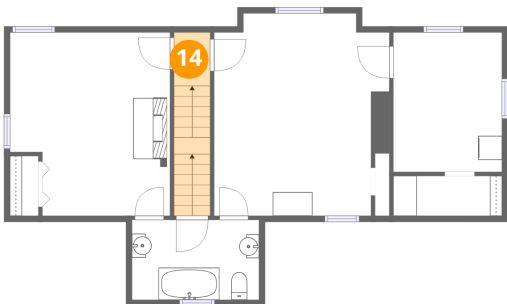
13 Floor 3 - W.I.C.



Dimensions: 9'2" x 3'4"
Area: 31 sq. ft
Counted as living area: Yes

Heated: Yes
Finished: Yes
Enclosed: Yes
Contiguous: Yes
Permitted: Yes
Wet space: No
Addition: No
Conversion: No

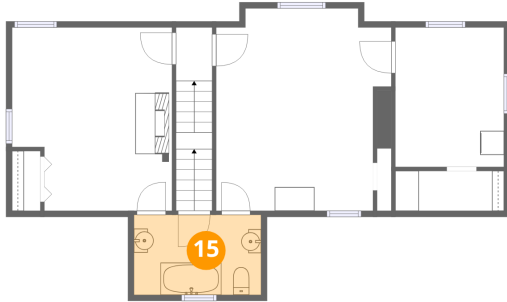
14 Floor 3 - Hall



Dimensions: 3'1" x 4'6"
Area: 14 sq. ft
Counted as living area: Yes

Heated: Yes
Finished: Yes
Enclosed: Yes
Contiguous: Yes
Permitted: Yes
Wet space: No
Addition: No
Conversion: No

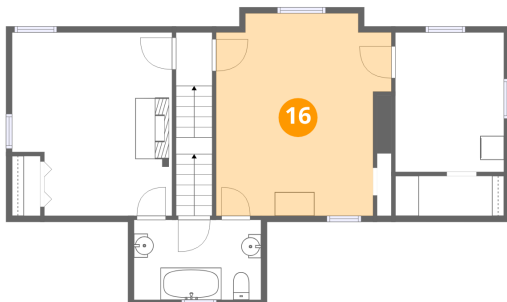
15 Floor 3 - Bath



Dimensions: 10'8" x 6'9"
Area: 72 sq. ft
Counted as living area: Yes

Heated: Yes
Finished: Yes
Enclosed: Yes
Contiguous: Yes
Permitted: Yes
Wet space: Yes
Addition: No
Conversion: No

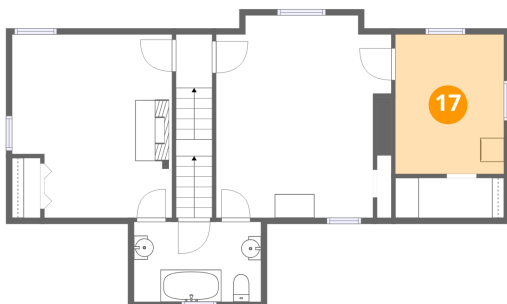
16 Floor 3 - Room



Dimensions: 14'9" x 17'0"
Area: 251 sq. ft
Counted as living area: Yes

Heated: Yes
Finished: Yes
Enclosed: Yes
Contiguous: Yes
Permitted: Yes
Wet space: No
Addition: No
Conversion: No

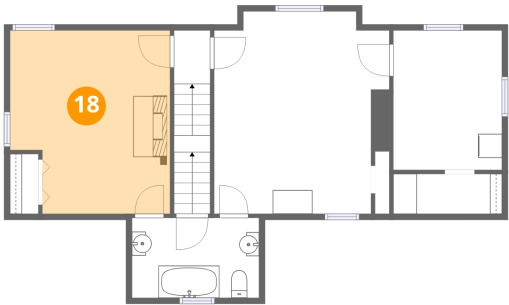
17 Floor 3 - Bedroom



Dimensions: 9'2" x 11'9"
Area: 107 sq. ft
Counted as living area: Yes

Heated: Yes
Finished: Yes
Enclosed: Yes
Contiguous: Yes
Permitted: Yes
Wet space: No
Addition: No
Conversion: No

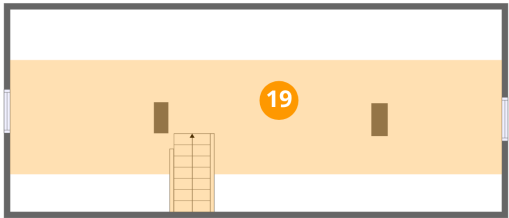
18 Floor 3 - Primary Bedroom



Dimensions: 13'5" x 15'5"
Area: 207 sq. ft
Counted as living area: Yes

Heated: Yes
Finished: Yes
Enclosed: Yes
Contiguous: Yes
Permitted: Yes
Wet space: No
Addition: No
Conversion: No

19 Floor 4 - Attic



Dimensions: 41'5" x 17'0"
Area: 706 sq. ft
Counted as living area: No

Heated: No
Finished: No
Enclosed: Yes
Contiguous: Yes
Permitted: Yes
Wet space: No
Addition: No
Conversion: No