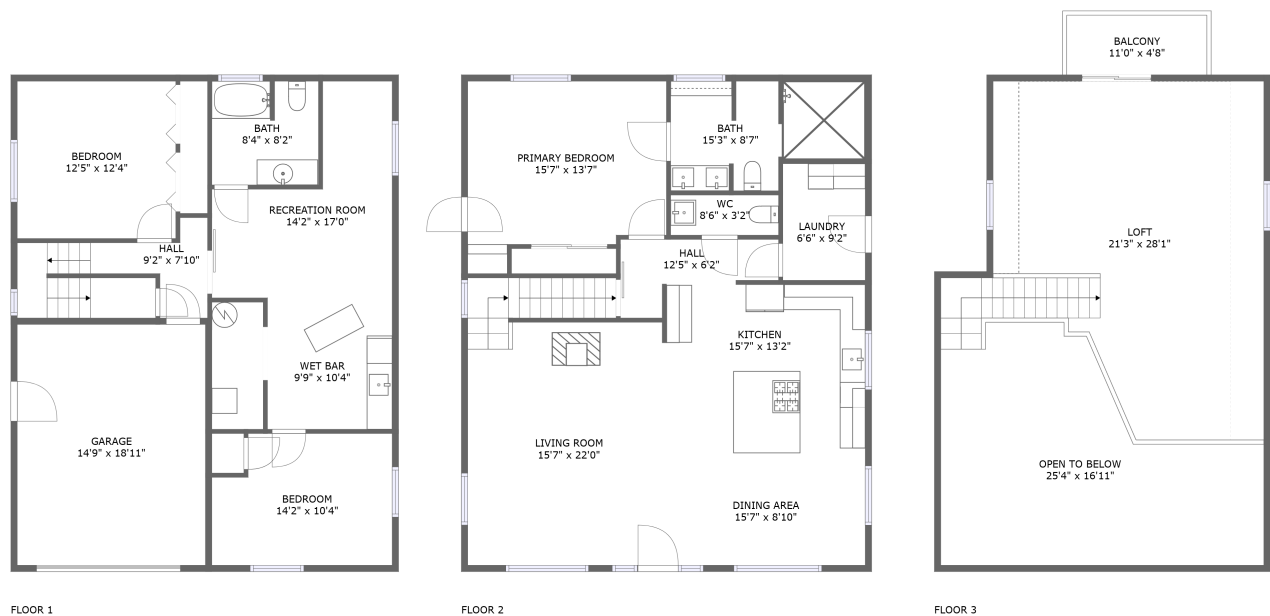




Home report


60989 Ski Run Rd,Joseph,OR,US





Property summary


 **1** Garages


 **3** Bedrooms

 **2** Bathrooms

 **1** Half baths

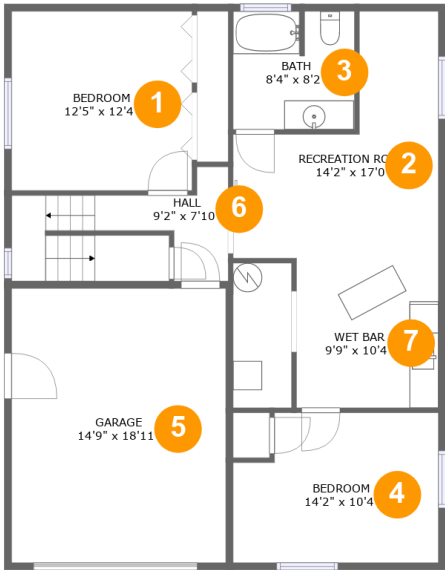
 **3** Floors

 **2,549** Gross living area sqft

 **3,450** Total sqft

Home report

60989 Ski Run Rd,Joseph,OR,US



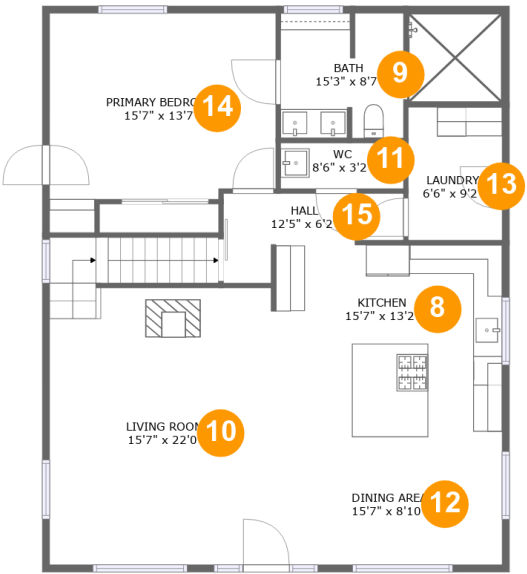
Room dimensions

Floor 1 Total sqft: 1184    Living area: 844

#		Dimensions	sqft	Counted as living area
1	Bedroom	12'5" x 12'4"	153 sq. ft	Yes
2	Recreation Room	14'2" x 17'0"	167 sq. ft	Yes
3	Bath	8'4" x 8'2"	67 sq. ft	Yes
4	Bedroom	14'2" x 10'4"	136 sq. ft	Yes
5	Garage	14'9" x 18'11"	279 sq. ft	No
6	Hall	9'2" x 7'10"	88 sq. ft	Yes
7	Wet Bar	9'9" x 10'4"	101 sq. ft	Yes

Home report

60989 Ski Run Rd,Joseph,OR,US



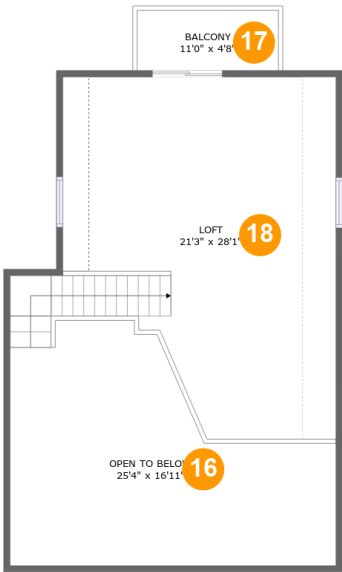
Room dimensions

Floor 2 Total sqft: 1253    Living area: 1253

#		Dimensions	sqft	Counted as living area
8	Kitchen	15'7" x 13'2"	205 sq. ft	Yes
9	Bath	15'3" x 8'7"	111 sq. ft	Yes
10	Living Room	15'7" x 22'0"	328 sq. ft	Yes
11	WC	8'6" x 3'2"	27 sq. ft	Yes
12	Dining Area	15'7" x 8'10"	137 sq. ft	Yes
13	Laundry	6'6" x 9'2"	59 sq. ft	Yes
14	Primary Bedroom	15'7" x 13'7"	204 sq. ft	Yes
15	Hall	12'5" x 6'2"	52 sq. ft	Yes

Home report

60989 Ski Run Rd,Joseph,OR,US

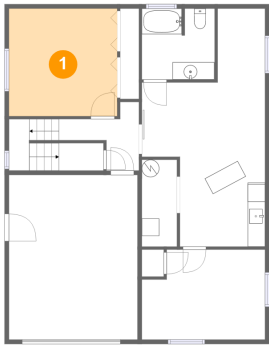


Room dimensions

Floor 3 Total sqft: 1013    Living area: 452

#		Dimensions	sqft	Counted as living area
16	Open To Below	25'4" x 16'11"	356 sq. ft	No
17	Balcony	11'0" x 4'8"	51 sq. ft	No
18	Loft	21'3" x 28'1"	439 sq. ft	Yes

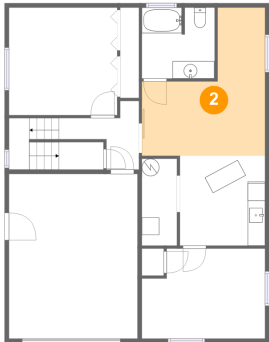
1 Floor 1 - Bedroom



Dimensions: 12'5" x 12'4"  
Area: 153 sq. ft  
Counted as living area: Yes

Heated: Yes  
Finished: Yes  
Enclosed: Yes  
Contiguous: Yes  
Permitted: Yes  
Wet space: No  
Addition: No  
Conversion: No

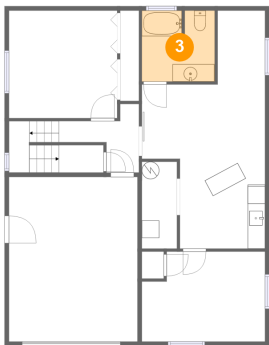
2 Floor 1 - Recreation Room



Dimensions: 14'2" x 17'0"  
Area: 167 sq. ft  
Counted as living area: Yes

Heated: Yes  
Finished: Yes  
Enclosed: Yes  
Contiguous: Yes  
Permitted: Yes  
Wet space: No  
Addition: No  
Conversion: No

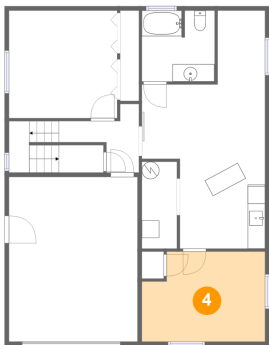
3 Floor 1 - Bath



Dimensions: 8'4" x 8'2"  
Area: 67 sq. ft  
Counted as living area: Yes

Heated: Yes  
Finished: Yes  
Enclosed: Yes  
Contiguous: Yes  
Permitted: Yes  
Wet space: Yes  
Addition: No  
Conversion: No

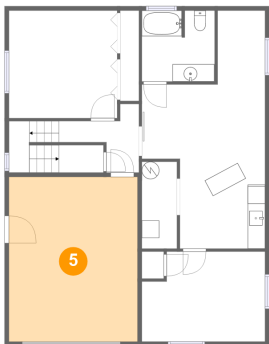
4 Floor 1 - Bedroom



Dimensions: 14'2" x 10'4"  
Area: 136 sq. ft  
Counted as living area: Yes

Heated: Yes  
Finished: Yes  
Enclosed: Yes  
Contiguous: Yes  
Permitted: Yes  
Wet space: No  
Addition: No  
Conversion: No

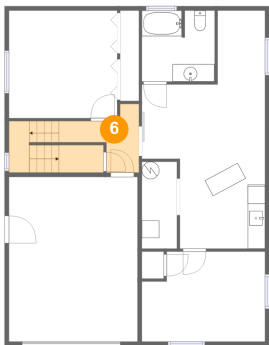
5 Floor 1 - Garage



Dimensions: 14'9" x 18'11"  
Area: 279 sq. ft  
Counted as living area: No

Heated: No  
Finished: No  
Enclosed: Yes  
Contiguous: Yes  
Permitted: Yes  
Wet space: No  
Addition: No  
Conversion: No

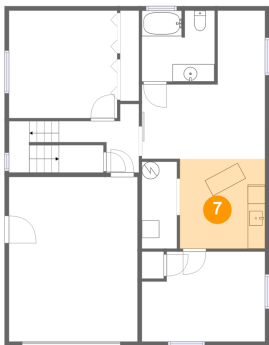
6 Floor 1 - Hall



Dimensions: 9'2" x 7'10"  
Area: 88 sq. ft  
Counted as living area: Yes

Heated: Yes  
Finished: Yes  
Enclosed: Yes  
Contiguous: Yes  
Permitted: Yes  
Wet space: No  
Addition: No  
Conversion: No

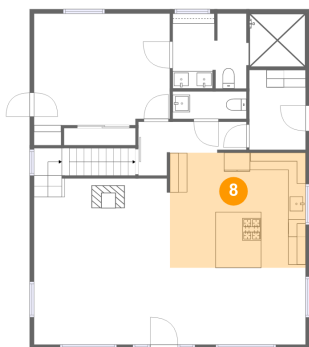
7 Floor 1 - Wet Bar



Dimensions: 9'9" x 10'4"  
Area: 101 sq. ft  
Counted as living area: Yes

Heated: Yes  
Finished: Yes  
Enclosed: Yes  
Contiguous: Yes  
Permitted: Yes  
Wet space: No  
Addition: No  
Conversion: No

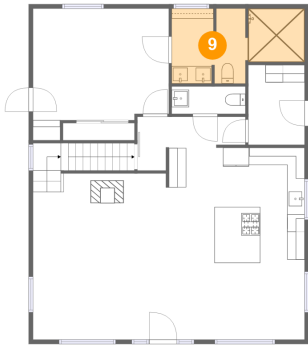
8 Floor 2 - Kitchen



Dimensions: 15'7" x 13'2"  
Area: 205 sq. ft  
Counted as living area: Yes

Heated: Yes  
Finished: Yes  
Enclosed: Yes  
Contiguous: Yes  
Permitted: Yes  
Wet space: No  
Addition: No  
Conversion: No

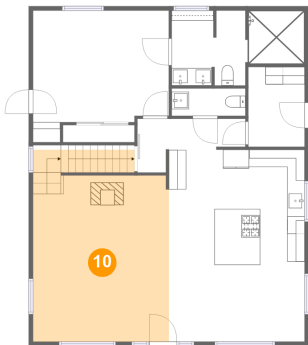
9 Floor 2 - Bath



Dimensions: 15'3" x 8'7"  
Area: 111 sq. ft  
Counted as living area: Yes

Heated: Yes  
Finished: Yes  
Enclosed: Yes  
Contiguous: Yes  
Permitted: Yes  
Wet space: Yes  
Addition: No  
Conversion: No

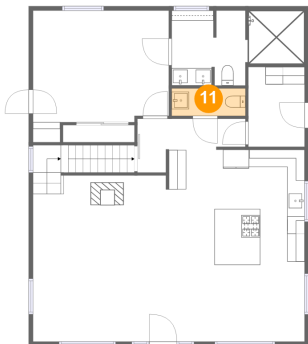
10 Floor 2 - Living Room



Dimensions: 15'7" x 22'0"  
Area: 328 sq. ft  
Counted as living area: Yes

Heated: Yes  
Finished: Yes  
Enclosed: Yes  
Contiguous: Yes  
Permitted: Yes  
Wet space: No  
Addition: No  
Conversion: No

11 Floor 2 - WC

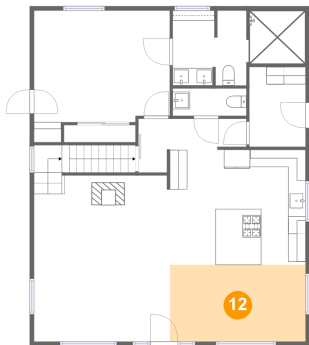


Dimensions: 8'6" x 3'2"  
Area: 27 sq. ft  
Counted as living area: Yes

Heated: Yes  
Finished: Yes  
Enclosed: Yes  
Contiguous: Yes  
Permitted: Yes  
Wet space: Yes  
Addition: No  
Conversion: No



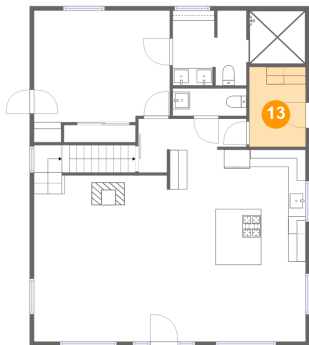
12 Floor 2 - Dining Area



Dimensions: 15'7" x 8'10"  
Area: 137 sq. ft  
Counted as living area: Yes

Heated: Yes  
Finished: Yes  
Enclosed: Yes  
Contiguous: Yes  
Permitted: Yes  
Wet space: No  
Addition: No  
Conversion: No

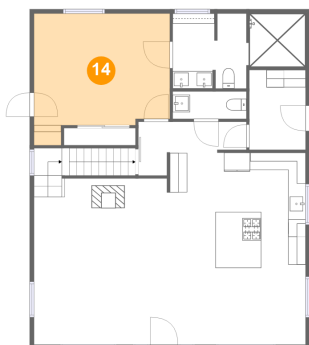
13 Floor 2 - Laundry



Dimensions: 6'6" x 9'2"  
Area: 59 sq. ft  
Counted as living area: Yes

Heated: Yes  
Finished: Yes  
Enclosed: Yes  
Contiguous: Yes  
Permitted: Yes  
Wet space: No  
Addition: No  
Conversion: No

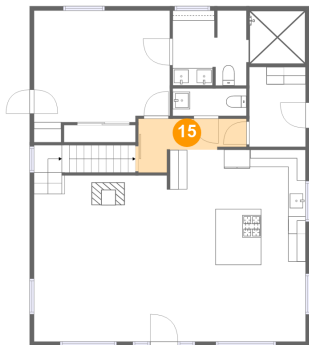
14 Floor 2 - Primary Bedroom



Dimensions: 15'7" x 13'7"  
Area: 204 sq. ft  
Counted as living area: Yes

Heated: Yes  
Finished: Yes  
Enclosed: Yes  
Contiguous: Yes  
Permitted: Yes  
Wet space: No  
Addition: No  
Conversion: No

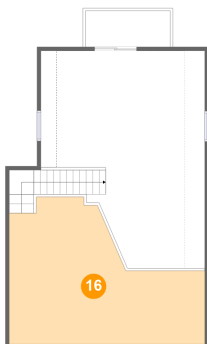
15 Floor 2 - Hall



Dimensions: 12'5" x 6'2"  
Area: 52 sq. ft  
Counted as living area: Yes

Heated: Yes  
Finished: Yes  
Enclosed: Yes  
Contiguous: Yes  
Permitted: Yes  
Wet space: No  
Addition: No  
Conversion: No

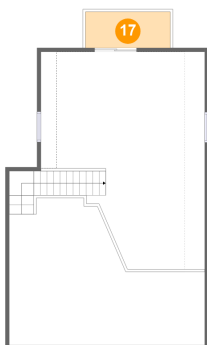
16 Floor 3 - Open To Below



Dimensions: 25'4" x 16'11"  
Area: 356 sq. ft  
Counted as living area: No

Heated: No  
Finished: No  
Enclosed: No  
Contiguous: Yes  
Permitted: No  
Wet space: No  
Addition: No  
Conversion: No

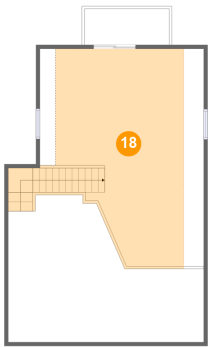
17 Floor 3 - Balcony



Dimensions: 11'0" x 4'8"  
Area: 51 sq. ft  
Counted as living area: No

Heated: No  
Finished: Yes  
Enclosed: No  
Contiguous: Yes  
Permitted: Yes  
Wet space: No  
Addition: No  
Conversion: No

18 Floor 3 - Loft



Dimensions: 21'3" x 28'1"  
Area: 439 sq. ft  
Counted as living area: Yes

Heated: Yes  
Finished: Yes  
Enclosed: Yes  
Contiguous: Yes  
Permitted: Yes  
Wet space: No  
Addition: No  
Conversion: No