



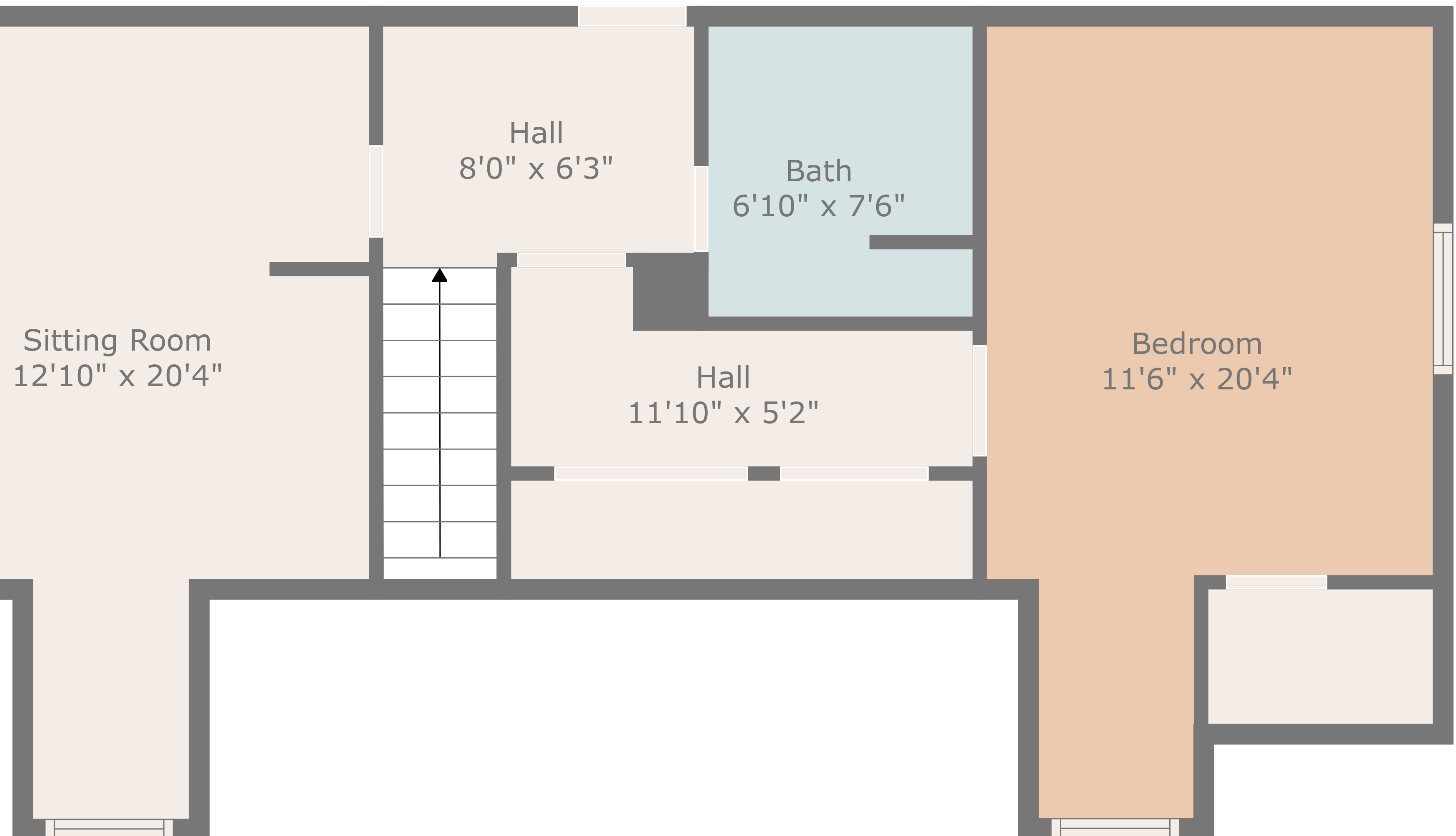
TOTAL: 2951 sq. ft

Below Ground: 1025 sq. ft, FLOOR 2: 1303 sq. ft, FLOOR 3: 623 sq. ft
EXCLUDED AREAS: STORAGE: 136 sq. ft, ELECTRICAL ROOM: 81 sq. ft, FIREPLACE: 17 sq. ft,
PATIO: 124 sq. ft, GARAGE: 499 sq. ft, BAY WINDOW: 8 sq. ft,
UNDEFINED: 20 sq. ft



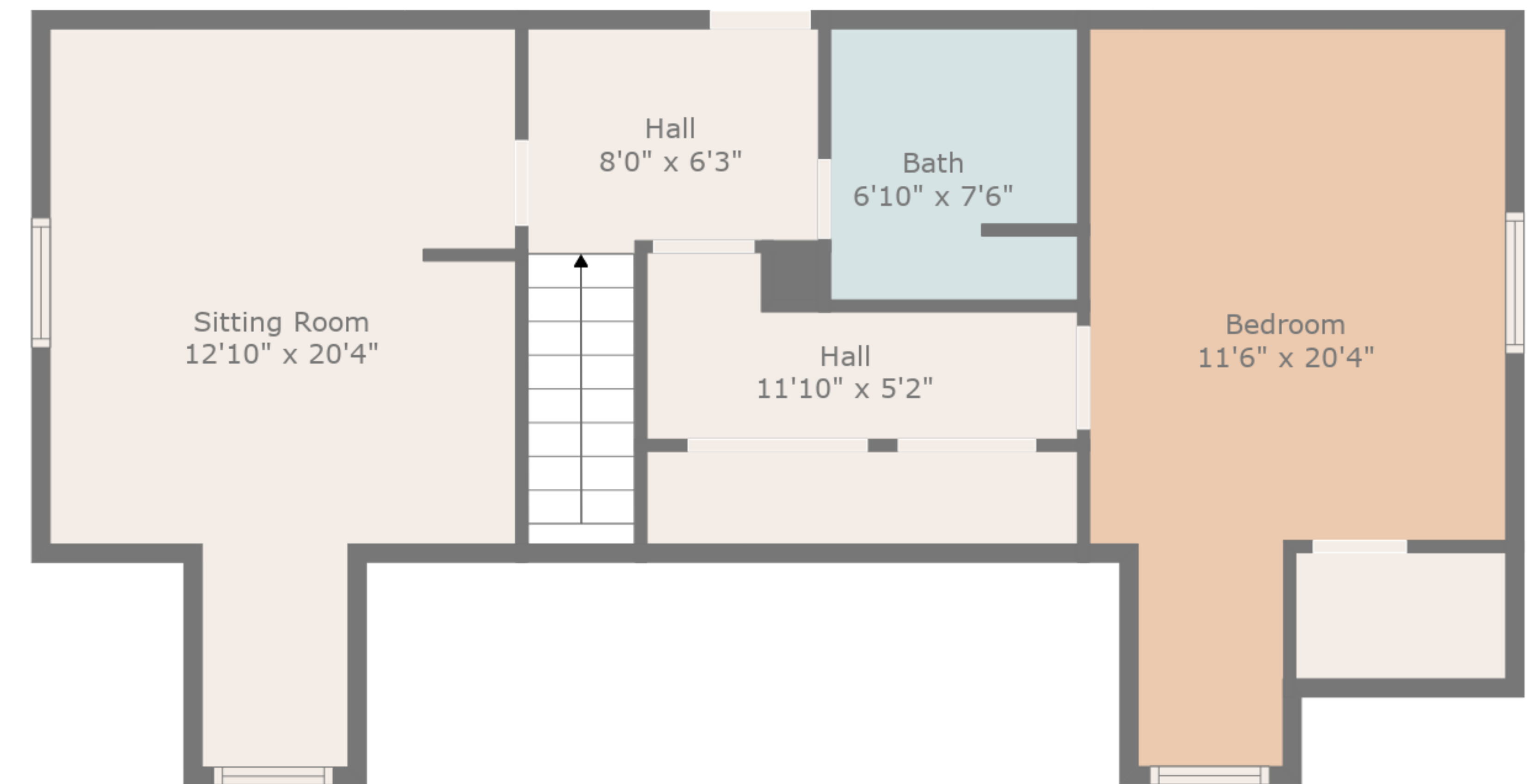
TOTAL: 2951 sq. ft

Below Ground: 1025 sq. ft, FLOOR 2: 1303 sq. ft, FLOOR 3: 623 sq. ft
EXCLUDED AREAS: STORAGE: 136 sq. ft, ELECTRICAL ROOM: 81 sq. ft, FIREPLACE: 17 sq. ft,
PATIO: 124 sq. ft, GARAGE: 499 sq. ft, BAY WINDOW: 8 sq. ft,
UNDEFINED: 20 sq. ft





Floor 2



Floor 3



Floor 1

TOTAL: 2951 sq. ft

Below Ground: 1025 sq. ft, FLOOR 2: 1303 sq. ft, FLOOR 3: 623 sq. ft
 EXCLUDED AREAS: STORAGE: 136 sq. ft, ELECTRICAL ROOM: 81 sq. ft, FIREPLACE: 17 sq. ft,
 PATIO: 124 sq. ft, GARAGE: 499 sq. ft, BAY WINDOW: 8 sq. ft,
 UNDEFINED: 20 sq. ft