



Home report

2510 Rosalind Avenue Southwest, Roanoke, Virginia, United States




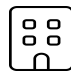
Property summary


 **0** Garages


 **3** Bedrooms

 **2** Bathrooms

 **0** Half baths

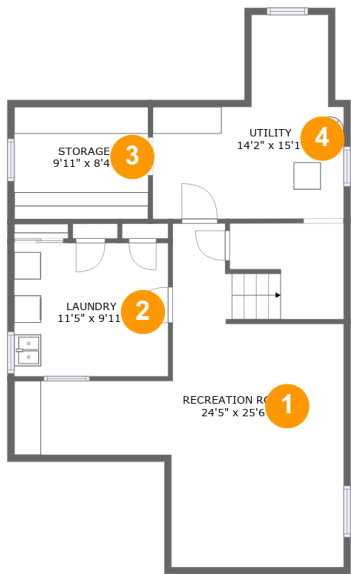
 **4** Floors

 **2,157** Gross living area sqft

 **3,647** Total sqft

Home report

2510 Rosalind Avenue Southwest, Roanoke, Virginia, United States



Room dimensions

Floor 1 Total sqft: 842    Living area: 0

#		Dimensions	sqft	Counted as living area
1	Recreation Room	24'5" x 25'6"	383 sq. ft	No
2	Laundry	11'5" x 9'11"	113 sq. ft	No
3	Storage	9'11" x 8'4"	83 sq. ft	No
4	Utility	14'2" x 15'1"	156 sq. ft	No

Home report

2510 Rosalind Avenue Southwest, Roanoke, Virginia, United States



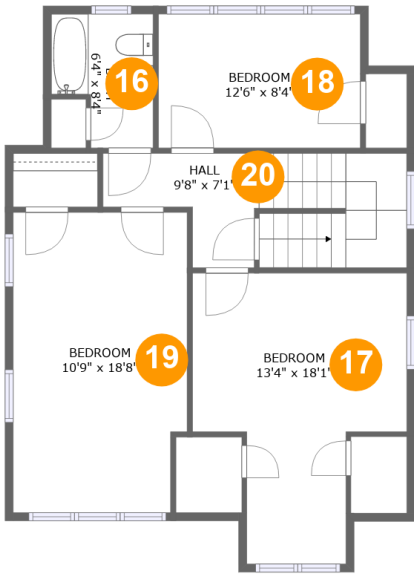
Room dimensions

Floor 2 Total sqft: 1395 Living area: 1379

#		Dimensions	sqft	Counted as living area
5	Kitchen	16'3" x 8'3"	128 sq. ft	Yes
6	Living Room	13'5" x 21'9"	315 sq. ft	Yes
7	Bath	6'8" x 6'2"	36 sq. ft	Yes
8	Dining Room	10'8" x 15'1"	162 sq. ft	Yes
9	Hall	6'8" x 6'10"	43 sq. ft	Yes
10	Hall	9'1" x 4'7"	33 sq. ft	Yes
11	Breakfast Area	7'10" x 10'7"	70 sq. ft	Yes
12	Sunroom	21'6" x 14'9"	311 sq. ft	Yes
13	Porch	4'3" x 3'8"	17 sq. ft	No
14	Pantry	7'6" x 6'10"	48 sq. ft	Yes
15	Library	10'8" x 7'10"	84 sq. ft	Yes

Home report

2510 Rosalind Avenue Southwest, Roanoke, Virginia, United States



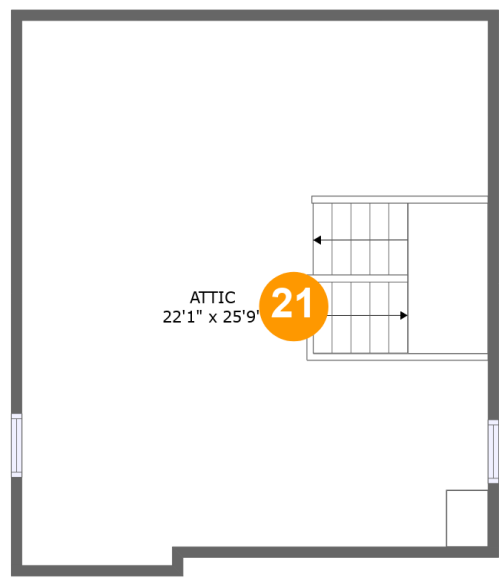
Room dimensions

Floor 3 Total sqft: 804 Living area: 778

#		Dimensions	sqft	Counted as living area
16	Bath	6'4" x 8'4"	44 sq. ft	Yes
17	Bedroom	13'4" x 18'1"	181 sq. ft	Yes
18	Bedroom	12'6" x 8'4"	104 sq. ft	Yes
19	Bedroom	10'9" x 18'8"	196 sq. ft	Yes
20	Hall	9'8" x 7'1"	112 sq. ft	Yes

Home report

2510 Rosalind Avenue Southwest,Roanoke,Virginia,United States

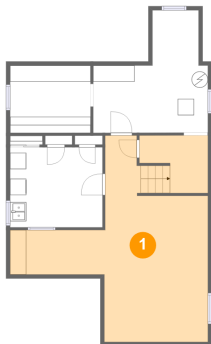


Room dimensions

Floor 4 Total sqft: 606    Living area: 0

#		Dimensions	sqft	Counted as living area
21	Attic	22'1" x 25'9"	387 sq. ft	No

1 Floor 1 - Recreation Room



Dimensions: 24'5" x 25'6"  
Area: 383 sq. ft  
Counted as living area: No

Heated: Yes  
Finished: Yes  
Enclosed: Yes  
Contiguous: No  
Permitted: Yes  
Wet space: No  
Addition: No  
Conversion: No

2 Floor 1 - Laundry



Dimensions: 11'5" x 9'11"  
Area: 113 sq. ft  
Counted as living area: No

Heated: Yes  
Finished: No  
Enclosed: Yes  
Contiguous: Yes  
Permitted: Yes  
Wet space: No  
Addition: No  
Conversion: No

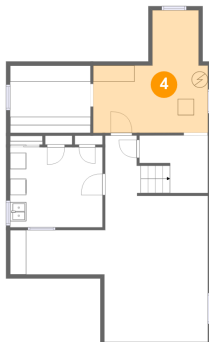
### 3 Floor 1 - Storage



Dimensions: 9'11" x 8'4"  
Area: 83 sq. ft  
Counted as living area: No

Heated: No  
Finished: No  
Enclosed: No  
Contiguous: Yes  
Permitted: Yes  
Wet space: No  
Addition: No  
Conversion: No

### 4 Floor 1 - Utility



Dimensions: 14'2" x 15'1"  
Area: 156 sq. ft  
Counted as living area: No

Heated: Yes  
Finished: No  
Enclosed: Yes  
Contiguous: Yes  
Permitted: Yes  
Wet space: No  
Addition: No  
Conversion: No

### 5 Floor 2 - Kitchen



Dimensions: 16'3" x 8'3"  
Area: 128 sq. ft  
Counted as living area: Yes

Heated: Yes  
Finished: Yes  
Enclosed: Yes  
Contiguous: Yes  
Permitted: Yes  
Wet space: No  
Addition: No  
Conversion: No

6 Floor 2 - Living Room



Dimensions: 13'5" x 21'9"  
Area: 315 sq. ft  
Counted as living area: Yes

Heated: Yes  
Finished: Yes  
Enclosed: Yes  
Contiguous: Yes  
Permitted: Yes  
Wet space: No  
Addition: No  
Conversion: No

7 Floor 2 - Bath



Dimensions: 6'8" x 6'2"  
Area: 36 sq. ft  
Counted as living area: Yes

Heated: Yes  
Finished: Yes  
Enclosed: Yes  
Contiguous: Yes  
Permitted: Yes  
Wet space: Yes  
Addition: No  
Conversion: No

8 Floor 2 - Dining Room



Dimensions: 10'8" x 15'1"  
Area: 162 sq. ft  
Counted as living area: Yes

Heated: Yes  
Finished: Yes  
Enclosed: Yes  
Contiguous: Yes  
Permitted: Yes  
Wet space: No  
Addition: No  
Conversion: No

9 Floor 2 - Hall



Dimensions: 6'8" x 6'10"  
Area: 43 sq. ft  
Counted as living area: Yes

Heated: Yes  
Finished: Yes  
Enclosed: Yes  
Contiguous: Yes  
Permitted: Yes  
Wet space: No  
Addition: No  
Conversion: No

10 Floor 2 - Hall



Dimensions: 9'1" x 4'7"  
Area: 33 sq. ft  
Counted as living area: Yes

Heated: Yes  
Finished: Yes  
Enclosed: Yes  
Contiguous: Yes  
Permitted: Yes  
Wet space: No  
Addition: No  
Conversion: No

11 Floor 2 - Breakfast Area



Dimensions: 7'10" x 10'7"  
Area: 70 sq. ft  
Counted as living area: Yes

Heated: Yes  
Finished: Yes  
Enclosed: Yes  
Contiguous: Yes  
Permitted: Yes  
Wet space: No  
Addition: No  
Conversion: No

12 Floor 2 - Sunroom



Dimensions: 21'6" x 14'9"  
Area: 311 sq. ft  
Counted as living area: Yes

Heated: Yes  
Finished: Yes  
Enclosed: Yes  
Contiguous: Yes  
Permitted: Yes  
Wet space: No  
Addition: No  
Conversion: No

13 Floor 2 - Porch



Dimensions: 4'3" x 3'8"  
Area: 17 sq. ft  
Counted as living area: No

Heated: No  
Finished: Yes  
Enclosed: No  
Contiguous: Yes  
Permitted: Yes  
Wet space: No  
Addition: No  
Conversion: No

14 Floor 2 - Pantry



Dimensions: 7'6" x 6'10"  
Area: 48 sq. ft  
Counted as living area: Yes

Heated: Yes  
Finished: Yes  
Enclosed: Yes  
Contiguous: Yes  
Permitted: Yes  
Wet space: No  
Addition: No  
Conversion: No

2510 Rosalind Avenue Southwest, Roanoke, Virginia, United States

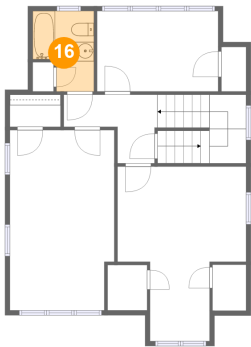
15 Floor 2 - Library



Dimensions: 10'8" x 7'10"  
Area: 84 sq. ft  
Counted as living area: Yes

Heated: Yes  
Finished: Yes  
Enclosed: Yes  
Contiguous: Yes  
Permitted: Yes  
Wet space: No  
Addition: No  
Conversion: No

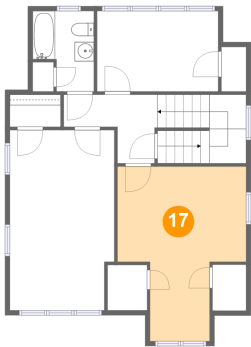
16 Floor 3 - Bath



Dimensions: 6'4" x 8'4"  
Area: 44 sq. ft  
Counted as living area: Yes

Heated: Yes  
Finished: Yes  
Enclosed: Yes  
Contiguous: Yes  
Permitted: Yes  
Wet space: Yes  
Addition: No  
Conversion: No

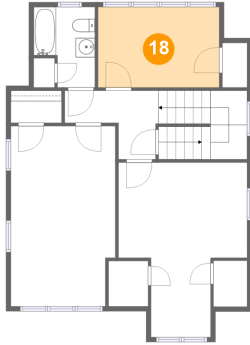
17 Floor 3 - Bedroom



Dimensions: 13'4" x 18'1"  
Area: 181 sq. ft  
Counted as living area: Yes

Heated: Yes  
Finished: Yes  
Enclosed: Yes  
Contiguous: Yes  
Permitted: Yes  
Wet space: No  
Addition: No  
Conversion: No

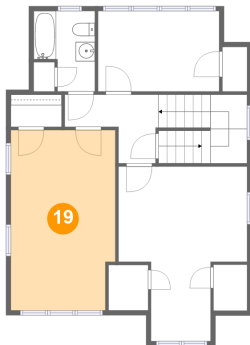
### 18 Floor 3 - Bedroom



Dimensions: 12'6" x 8'4"  
Area: 104 sq. ft  
Counted as living area: Yes

Heated: Yes  
Finished: Yes  
Enclosed: Yes  
Contiguous: Yes  
Permitted: Yes  
Wet space: No  
Addition: No  
Conversion: No

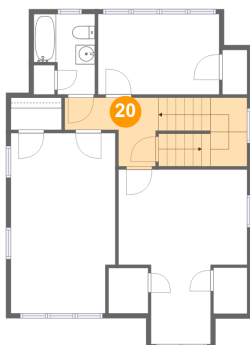
### 19 Floor 3 - Bedroom



Dimensions: 10'9" x 18'8"  
Area: 196 sq. ft  
Counted as living area: Yes

Heated: Yes  
Finished: Yes  
Enclosed: Yes  
Contiguous: Yes  
Permitted: Yes  
Wet space: No  
Addition: No  
Conversion: No

### 20 Floor 3 - Hall

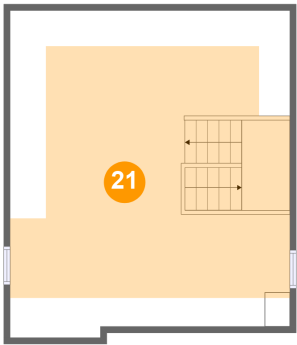


Dimensions: 9'8" x 7'1"  
Area: 112 sq. ft  
Counted as living area: Yes

Heated: Yes  
Finished: Yes  
Enclosed: Yes  
Contiguous: Yes  
Permitted: Yes  
Wet space: No  
Addition: No  
Conversion: No

2510 Rosalind Avenue Southwest, Roanoke, Virginia, United States

21 Floor 4 - Attic



Dimensions: 22'1" x 25'9"  
Area: 387 sq. ft  
Counted as living area: No

Heated: No  
Finished: No  
Enclosed: Yes  
Contiguous: Yes  
Permitted: Yes  
Wet space: No  
Addition: No  
Conversion: No