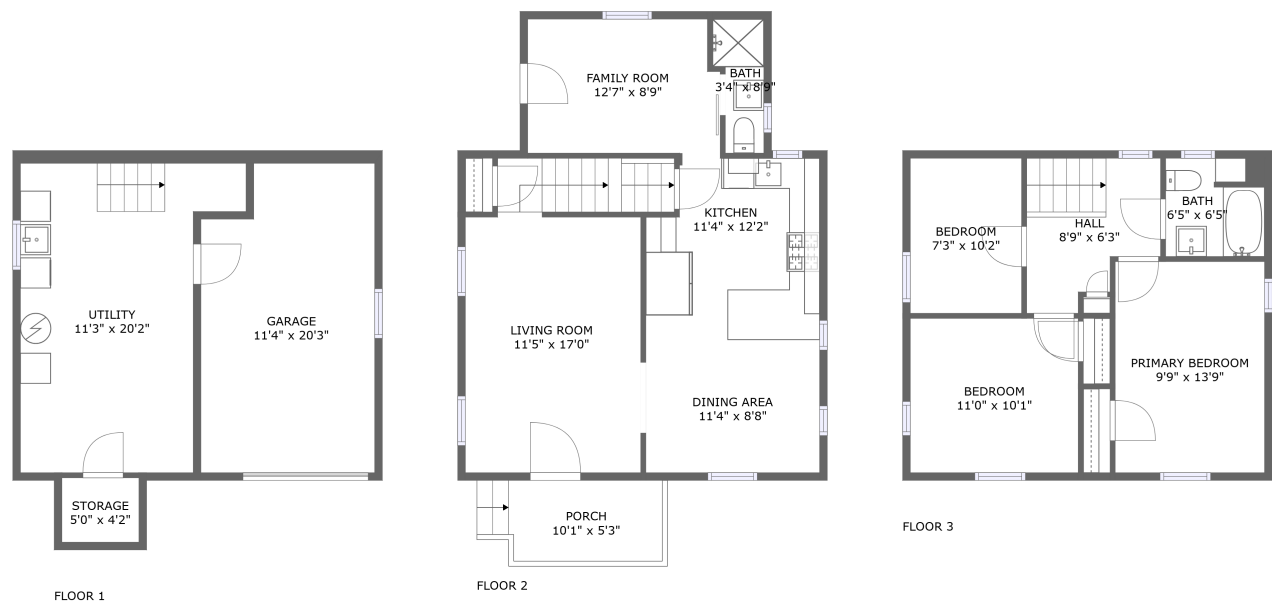


Home report

736 Allegheny River Boulevard, Downtown Oakmont, Oakmont,  
Allegheny County, Pennsylvania, United States, 15139



**Total Area: 1092 sq. ft**

Below Ground: 0 sq. ft, Floor 2: 616 sq. ft, Floor 3: 476 sq. ft

Excluded: Storage 23 sq. ft, Garage 217 sq. ft, Utility 239 sq. ft, Outdoor Porch 60 sq. ft, Walls: 165 sq. ft

Property summary

**3**  
Floors

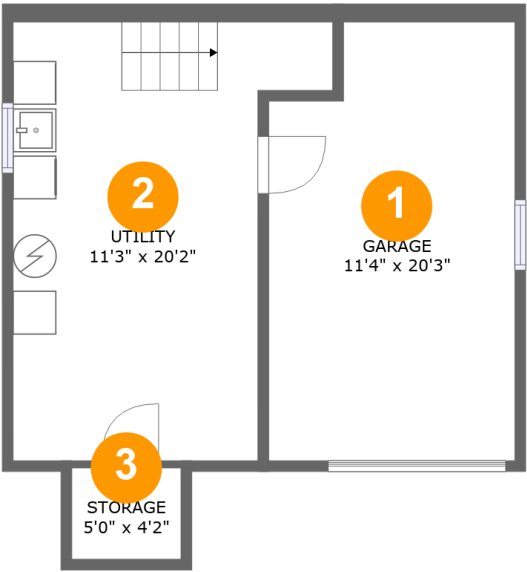
**3**  
Bedrooms

**2**  
Bathrooms

**1**  
Garages

Home report

736 Allegheny River Boulevard, Downtown Oakmont, Oakmont,  
Allegheny County, Pennsylvania, United States, 15139



Room dimensions

Floor 1 Below ground Total:0sqft Excluded: 479sqft

#		Max Dimensions	sqft	Included
1	Garage	11'4" x 20'3"	217 sq. ft	No
2	Utility	11'3" x 20'2"	239 sq. ft	No
3	Storage	5'0" x 4'2"	21 sq. ft	No

Home report

736 Allegheny River Boulevard, Downtown Oakmont, Oakmont,  
Allegheny County, Pennsylvania, United States, 15139



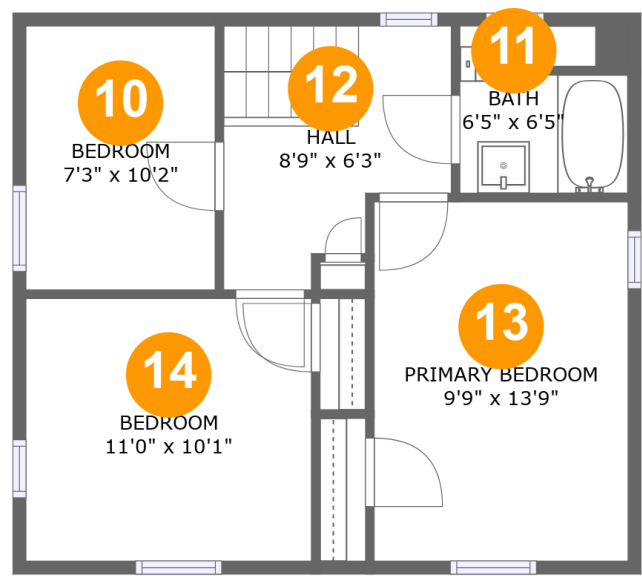
Room dimensions

Floor 2 Total:616sqft    Excluded: 60sqft

#		Max Dimensions	sqft	Included
4	Living Room	11'5" x 17'0"	233 sq. ft	Yes
5	Family Room	12'7" x 8'9"	107 sq. ft	Yes
6	Dining Area	11'4" x 8'8"	99 sq. ft	Yes
7	Porch	10'1" x 5'3"	60 sq. ft	No
8	Bath	3'4" x 8'9"	25 sq. ft	Yes
9	Kitchen	11'4" x 12'2"	127 sq. ft	Yes

Home report

736 Allegheny River Boulevard, Downtown Oakmont, Oakmont,  
Allegheny County, Pennsylvania, United States, 15139



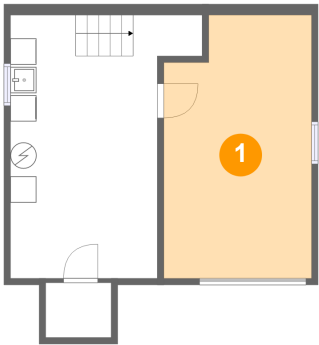
Room dimensions

Floor 3 Total:476sqft Excluded: 0sqft

#		Max Dimensions	sqft	Included
10	Bedroom	7'3" x 10'2"	74 sq. ft	Yes
11	Bath	6'5" x 6'5"	40 sq. ft	Yes
12	Hall	8'9" x 6'3"	73 sq. ft	Yes
13	Primary Bedroom	9'9" x 13'9"	134 sq. ft	Yes
14	Bedroom	11'0" x 10'1"	110 sq. ft	Yes

736 Allegheny River Boulevard, Downtown Oakmont, Oakmont,  
Allegheny County, Pennsylvania, United States, 15139

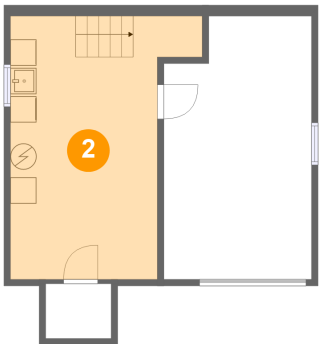
1 Floor 1 - Garage



Max Dimensions: 11'4" x 20'3"  
Calculated Area: 217 sq. ft  
Included: No

Heated: No  
Finished: No  
Enclosed: Yes  
Contiguous: Yes  
Permitted: Yes  
Wet space: No  
Addition: No  
Conversion: No

2 Floor 1 - Utility



Max Dimensions: 11'3" x 20'2"  
Calculated Area: 239 sq. ft  
Included: No

Heated: Yes  
Finished: No  
Enclosed: Yes  
Contiguous: Yes  
Permitted: Yes  
Wet space: No  
Addition: No  
Conversion: No

3 Floor 1 - Storage



Max Dimensions: 5'0" x 4'2"  
Calculated Area: 21 sq. ft  
Included: No

Heated: No  
Finished: No  
Enclosed: No  
Contiguous: Yes  
Permitted: Yes  
Wet space: No  
Addition: No  
Conversion: No

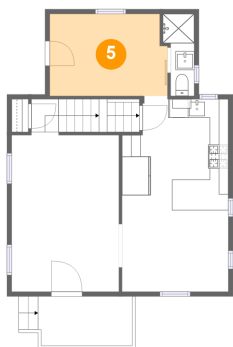
4 Floor 2 - Living Room



Max Dimensions: 11'5" x 17'0"  
Calculated Area: 233 sq. ft  
Included: Yes

Heated: Yes  
Finished: Yes  
Enclosed: Yes  
Contiguous: Yes  
Permitted: Yes  
Wet space: No  
Addition: No  
Conversion: No

5 Floor 2 - Family Room



Max Dimensions: 12'7" x 8'9"  
Calculated Area: 107 sq. ft  
Included: Yes

Heated: Yes  
Finished: Yes  
Enclosed: Yes  
Contiguous: Yes  
Permitted: Yes  
Wet space: No  
Addition: No  
Conversion: No

6 Floor 2 - Dining Area



Max Dimensions: 11'4" x 8'8"  
Calculated Area: 99 sq. ft  
Included: Yes

Heated: Yes  
Finished: Yes  
Enclosed: Yes  
Contiguous: Yes  
Permitted: Yes  
Wet space: No  
Addition: No  
Conversion: No

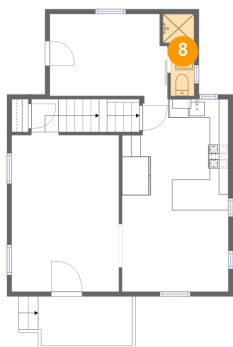
7 Floor 2 - Porch



Max Dimensions: 10'1" x 5'3"  
Calculated Area: 60 sq. ft  
Included: No

Heated: No  
Finished: Yes  
Enclosed: No  
Contiguous: Yes  
Permitted: Yes  
Wet space: No  
Addition: No  
Conversion: No

8 Floor 2 - Bath



Max Dimensions: 3'4" x 8'9"  
Calculated Area: 25 sq. ft  
Included: Yes

Heated: Yes  
Finished: Yes  
Enclosed: Yes  
Contiguous: Yes  
Permitted: Yes  
Wet space: Yes  
Addition: No  
Conversion: No

736 Allegheny River Boulevard, Downtown Oakmont, Oakmont,  
Allegheny County, Pennsylvania, United States, 15139

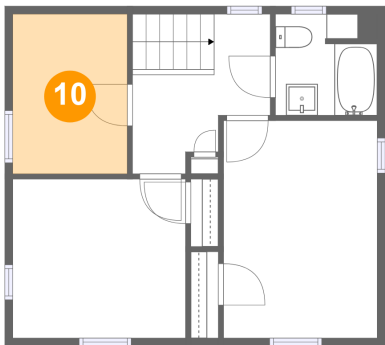
9 Floor 2 - Kitchen



Max Dimensions: 11'4" x 12'2"  
Calculated Area: 127 sq. ft  
Included: Yes

Heated: Yes  
Finished: Yes  
Enclosed: Yes  
Contiguous: Yes  
Permitted: Yes  
Wet space: No  
Addition: No  
Conversion: No

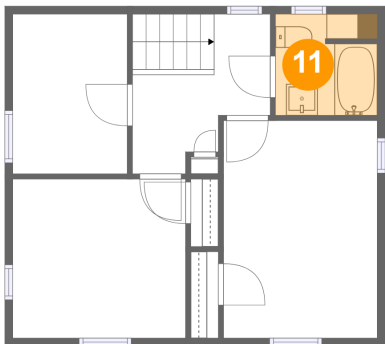
10 Floor 3 - Bedroom



Max Dimensions: 7'3" x 10'2"  
Calculated Area: 74 sq. ft  
Included: Yes

Heated: Yes  
Finished: Yes  
Enclosed: Yes  
Contiguous: Yes  
Permitted: Yes  
Wet space: No  
Addition: No  
Conversion: No

11 Floor 3 - Bath

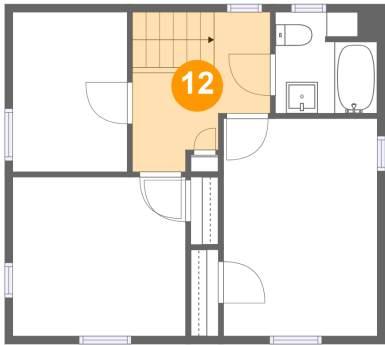


Max Dimensions: 6'5" x 6'5"  
Calculated Area: 40 sq. ft  
Included: Yes

Heated: Yes  
Finished: Yes  
Enclosed: Yes  
Contiguous: Yes  
Permitted: Yes  
Wet space: Yes  
Addition: No  
Conversion: No



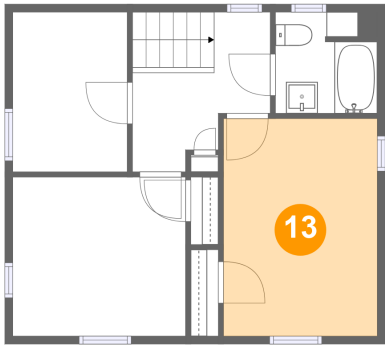
12 Floor 3 - Hall



Max Dimensions: 8'9" x 6'3"  
Calculated Area: 73 sq. ft  
Included: Yes

Heated: Yes  
Finished: Yes  
Enclosed: Yes  
Contiguous: Yes  
Permitted: Yes  
Wet space: No  
Addition: No  
Conversion: No

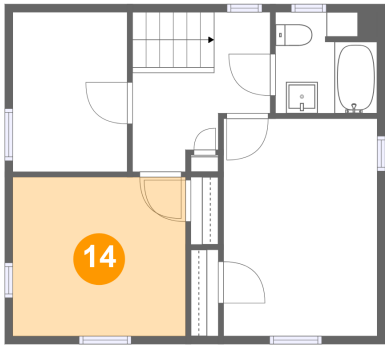
13 Floor 3 - Primary Bedroom



Max Dimensions: 9'9" x 13'9"  
Calculated Area: 134 sq. ft  
Included: Yes

Heated: Yes  
Finished: Yes  
Enclosed: Yes  
Contiguous: Yes  
Permitted: Yes  
Wet space: No  
Addition: No  
Conversion: No

14 Floor 3 - Bedroom



Max Dimensions: 11'0" x 10'1"  
Calculated Area: 110 sq. ft  
Included: Yes

Heated: Yes  
Finished: Yes  
Enclosed: Yes  
Contiguous: Yes  
Permitted: Yes  
Wet space: No  
Addition: No  
Conversion: No