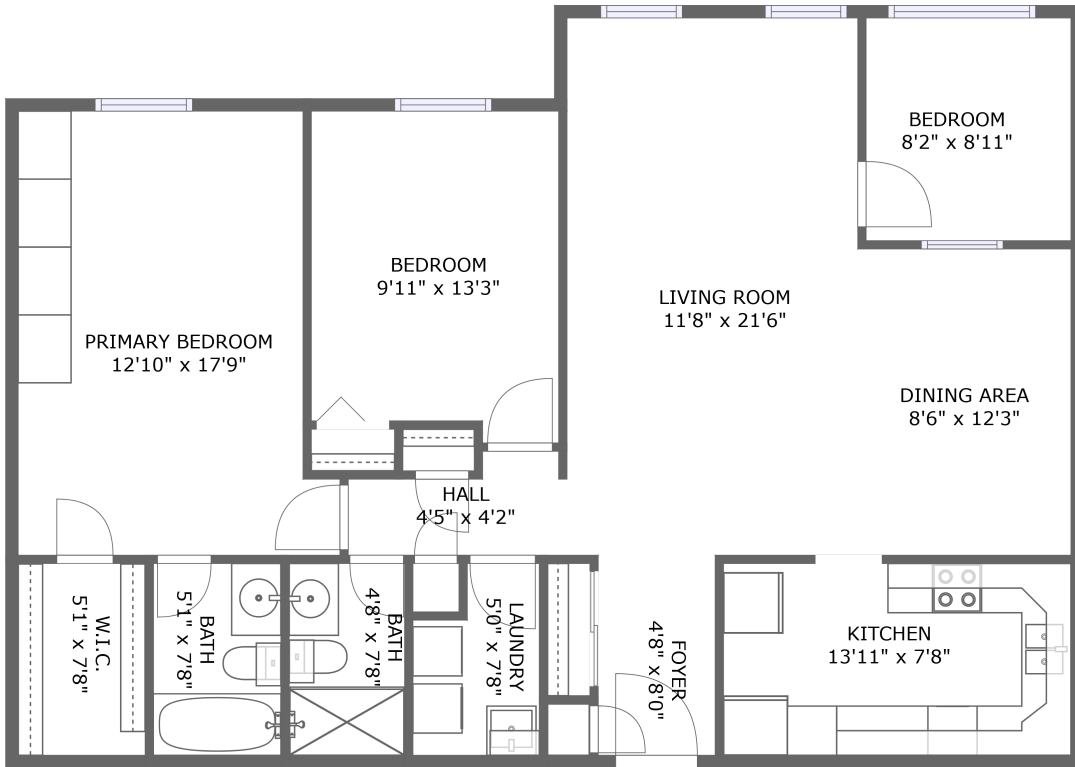


# 130 Neptune Drive, Lawrence Manor, North York, Ontario, Canada, M6A 1X5, 607

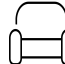


FLOOR 1

## Property Summary

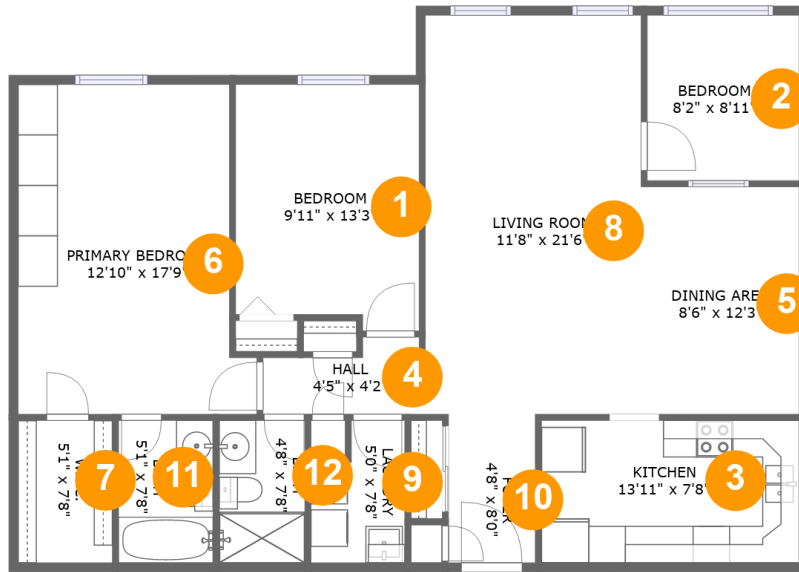
 **0** garages     **3** bedrooms     **2** bathrooms     **0** half baths

 **1** floors

 **1,164** Gross Living Area sqft

 **1,164** total sqft

**130 Neptune Drive, Lawrence Manor, North York, Ontario, Canada, M6A 1X5, 607**



**Room Dimensions**

**Floor 1**

**Total sqft: 1164**

**Living area: 1164**

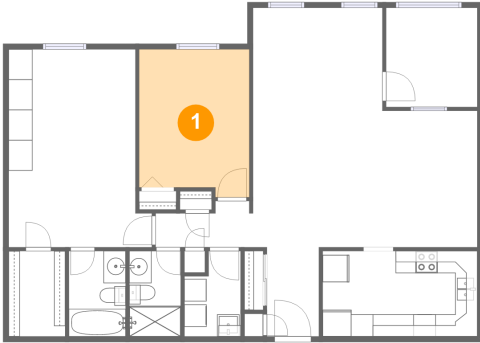
#	Room name	Dimensions	Area (sqft)	Counted as Living Area
1	Bedroom	9'11" x 13'3"	126 sq. ft	Yes
2	Bedroom	8'2" x 8'11"	73 sq. ft	Yes
3	Kitchen	13'11" x 7'8"	107 sq. ft	Yes
4	Hall	4'5" x 4'2"	30 sq. ft	Yes
5	Dining Area	8'6" x 12'3"	105 sq. ft	Yes
6	Primary Bedroom	12'10" x 17'9"	207 sq. ft	Yes
7	W.i.c.	5'1" x 7'8"	39 sq. ft	Yes
8	Living Room	11'8" x 21'6"	250 sq. ft	Yes
9	Laundry	5'0" x 7'8"	34 sq. ft	Yes
10	Foyer	4'8" x 8'0"	38 sq. ft	Yes
11	Bath	5'1" x 7'8"	39 sq. ft	Yes

**130 Neptune Drive, Lawrence Manor, North York,  
Ontario, Canada, M6A 1X5, 607**

#	Room name	Dimensions	Area (sqft)	Counted as Living Area
12	Bath	4'8" x 7'8"	36 sq. ft	Yes

# 130 Neptune Drive, Lawrence Manor, North York, Ontario, Canada, M6A 1X5, 607

## 1 Floor 1 - Bedroom



**Dimensions:** 9'11" x 13'3"  
**Area:** 126 sq. ft  
**Counted as Living Area:**  
Yes

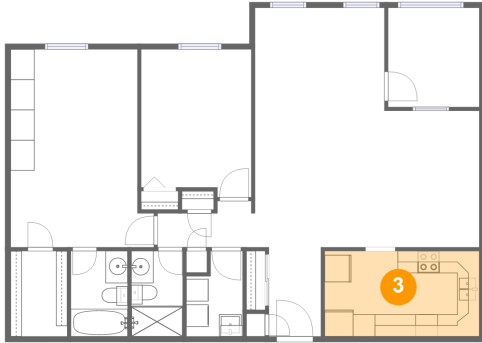
**Heated:** Yes  
**Finished:** Yes  
**Enclosed:** Yes  
**Contiguous:**  
Yes  
**Permitted:** Yes  
**Wet Space:** No  
**Addition:** No  
**Conversion:** No

## 2 Floor 1 - Bedroom



**Dimensions:** 8'2" x 8'11"  
**Area:** 73 sq. ft  
**Counted as Living Area:**  
Yes

**Heated:** Yes  
**Finished:** Yes  
**Enclosed:** Yes  
**Contiguous:**  
Yes  
**Permitted:** Yes  
**Wet Space:** No  
**Addition:** No  
**Conversion:** No

**130 Neptune Drive, Lawrence Manor, North York,  
Ontario, Canada, M6A 1X5, 607****3 Floor 1 - Kitchen**

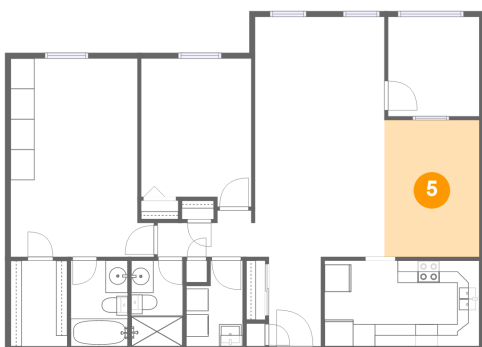
Dimensions: 13'11" x 7'8"  
Area: 107 sq. ft  
Counted as Living Area:  
Yes

Heated: Yes  
Finished: Yes  
Enclosed: Yes  
Contiguous:  
Yes  
Permitted: Yes  
Wet Space: No  
Addition: No  
Conversion: No

**4 Floor 1 - Hall**

Dimensions: 4'5" x 4'2"  
Area: 30 sq. ft  
Counted as Living Area:  
Yes

Heated: Yes  
Finished: Yes  
Enclosed: Yes  
Contiguous:  
Yes  
Permitted: Yes  
Wet Space: No  
Addition: No  
Conversion: No

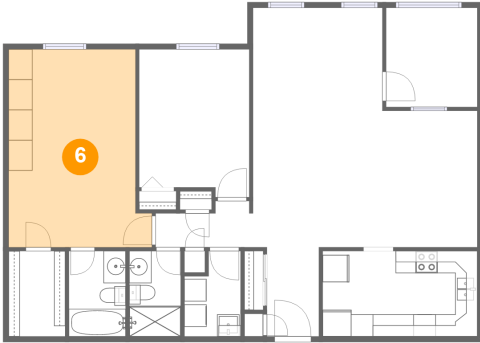
**5 Floor 1 - Dining Area**

Dimensions: 8'6" x 12'3"  
Area: 105 sq. ft  
Counted as Living Area:  
Yes

Heated: Yes  
Finished: Yes  
Enclosed: Yes  
Contiguous:  
Yes  
Permitted: Yes  
Wet Space: No  
Addition: No  
Conversion: No

# 130 Neptune Drive, Lawrence Manor, North York, Ontario, Canada, M6A 1X5, 607

## 6 Floor 1 - Primary Bedroom



Dimensions: 12'10" x 17'9"  
Area: 207 sq. ft  
Counted as Living Area:  
Yes

Heated: Yes  
Finished: Yes  
Enclosed: Yes  
Contiguous:  
Yes  
Permitted: Yes  
Wet Space: No  
Addition: No  
Conversion: No

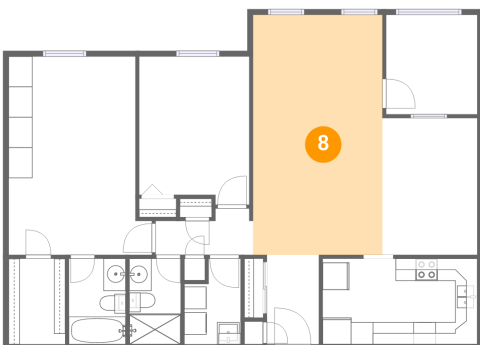
## 7 Floor 1 - W.i.c.



Dimensions: 5'1" x 7'8"  
Area: 39 sq. ft  
Counted as Living Area:  
Yes

Heated: Yes  
Finished: Yes  
Enclosed: Yes  
Contiguous:  
Yes  
Permitted: Yes  
Wet Space: No  
Addition: No  
Conversion: No

## 8 Floor 1 - Living Room

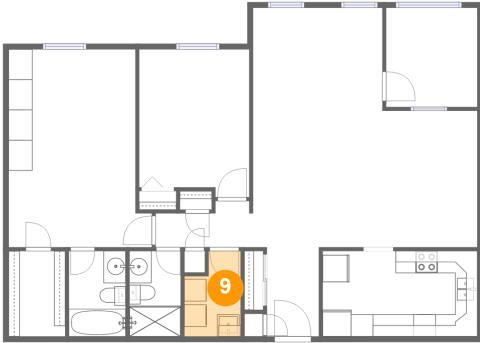


Dimensions: 11'8" x 21'6"  
Area: 250 sq. ft  
Counted as Living Area:  
Yes

Heated: Yes  
Finished: Yes  
Enclosed: Yes  
Contiguous:  
Yes  
Permitted: Yes  
Wet Space: No  
Addition: No  
Conversion: No

# 130 Neptune Drive, Lawrence Manor, North York, Ontario, Canada, M6A 1X5, 607

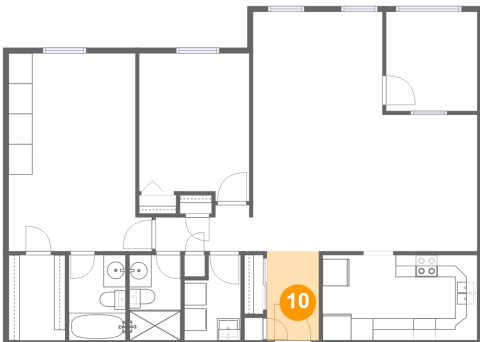
## 9 Floor 1 - Laundry



Dimensions: 5'0" x 7'8"  
Area: 34 sq. ft  
Counted as Living Area:  
Yes

Heated: Yes  
Finished: Yes  
Enclosed: Yes  
Contiguous:  
Yes  
Permitted: Yes  
Wet Space: No  
Addition: No  
Conversion: No

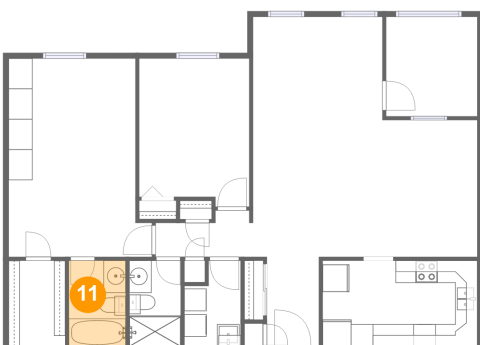
## 10 Floor 1 - Foyer



Dimensions: 4'8" x 8'0"  
Area: 38 sq. ft  
Counted as Living Area:  
Yes

Heated: Yes  
Finished: Yes  
Enclosed: Yes  
Contiguous:  
Yes  
Permitted: Yes  
Wet Space: No  
Addition: No  
Conversion: No

## 11 Floor 1 - Bath



Dimensions: 5'1" x 7'8"  
Area: 39 sq. ft  
Counted as Living Area:  
Yes

Heated: Yes  
Finished: Yes  
Enclosed: Yes  
Contiguous:  
Yes  
Permitted: Yes  
Wet Space: Yes  
Addition: No  
Conversion: No

# 130 Neptune Drive, Lawrence Manor, North York, Ontario, Canada, M6A 1X5, 607

## 12 Floor 1 - Bath



Dimensions: 4'8" x 7'8"  
Area: 36 sq. ft  
Counted as Living Area:  
Yes

Heated: Yes  
Finished: Yes  
Enclosed: Yes  
Contiguous:  
Yes  
Permitted: Yes  
Wet Space: Yes  
Addition: No  
Conversion: No