

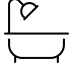

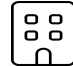


7 Dudley Road, Mendon, Worcester County, Massachusetts, United States, 01756

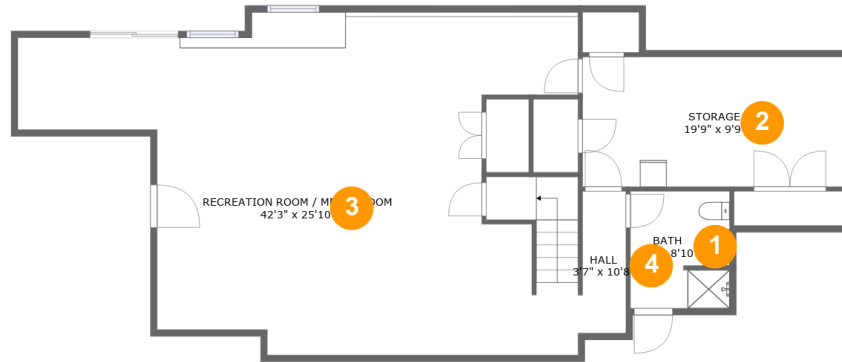


Property Summary

 **1** garages  **4** bedrooms  **3** bathrooms  **1** half baths

 **3** floors  **4,616** Gross Living Area sqft  **5,914** total sqft

7 Dudley Road, Mendon, Worcester County, Massachusetts, United States, 01756



Room Dimensions

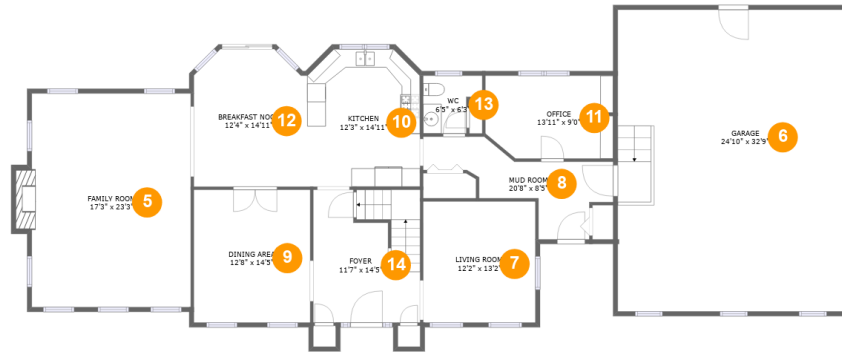
Floor 1

Total sqft: 1299

Living area: 1025

#	Room name	Dimensions	Area (sqft)	Counted as Living Area
1	Bath	7'6" x 8'10"	65 sq. ft	Yes
2	Storage	19'9" x 9'9"	193 sq. ft	No
3	Recreation Room / Media Room	42'3" x 25'10"	813 sq. ft	Yes
4	Hall	3'7" x 10'8"	36 sq. ft	Yes

7 Dudley Road, Mendon, Worcester County, Massachusetts, United States, 01756



Room Dimensions

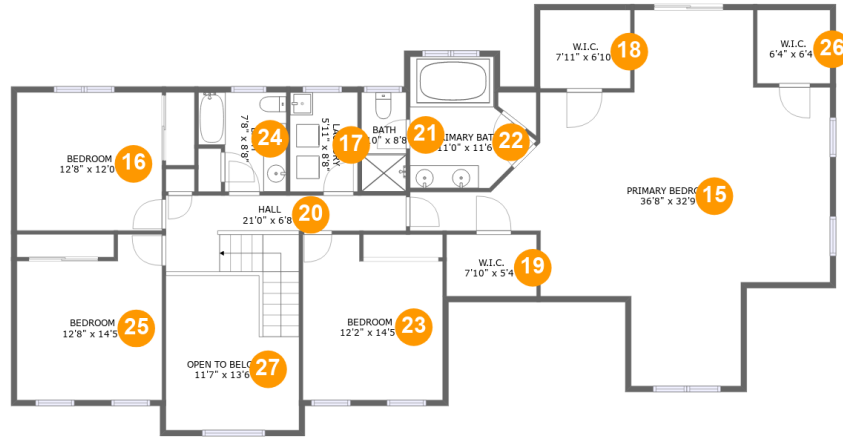
Floor 2

Total sqft: 2597

Living area: 1720

#	Room name	Dimensions	Area (sqft)	Counted as Living Area
5	Family Room	17'3" x 23'3"	413 sq. ft	Yes
6	Garage	24'10" x 32'9"	816 sq. ft	No
7	Living Room	12'2" x 13'2"	161 sq. ft	Yes
8	Mud Room	20'8" x 8'5"	112 sq. ft	Yes
9	Dining Area	12'8" x 14'5"	183 sq. ft	Yes
10	Kitchen	12'3" x 14'11"	175 sq. ft	Yes
11	Office	13'11" x 9'0"	120 sq. ft	Yes
12	Breakfast Nook	12'4" x 14'11"	174 sq. ft	Yes
13	Wc	6'5" x 6'3"	33 sq. ft	Yes
14	Foyer	11'7" x 14'5"	164 sq. ft	Yes

7 Dudley Road, Mendon, Worcester County, Massachusetts, United States, 01756



Room Dimensions

Floor 3

Total sqft: 2018

Living area: 1871

#	Room name	Dimensions	Area (sqft)	Counted as Living Area
15	Primary Bedroom	36'8" x 32'9"	640 sq. ft	Yes
16	Bedroom	12'8" x 12'0"	152 sq. ft	Yes
17	Laundry	5'11" x 8'8"	51 sq. ft	Yes
18	W.i.c.	7'11" x 6'10"	54 sq. ft	Yes
19	W.i.c.	7'10" x 5'4"	42 sq. ft	Yes
20	Hall	21'0" x 6'8"	128 sq. ft	Yes
21	Bath	3'10" x 8'8"	34 sq. ft	Yes
22	Primary Bath	11'0" x 11'6"	96 sq. ft	Yes
23	Bedroom	12'2" x 14'5"	159 sq. ft	Yes
24	Bath	7'8" x 8'8"	57 sq. ft	Yes
25	Bedroom	12'8" x 14'5"	162 sq. ft	Yes

Scan captured on Tue, 08 Oct 2024 18:03:59 GMT

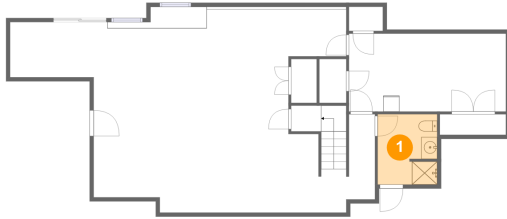
Information is calculated by CubiCasa technology; deemed highly reliable but not guaranteed.

**7 Dudley Road, Mendon, Worcester County,
Massachusetts, United States, 01756**

#	Room name	Dimensions	Area (sqft)	Counted as Living Area
26	W.i.c.	6'4" x 6'4"	41 sq. ft	Yes
27	Open To Below	11'7" x 13'6"	138 sq. ft	No

7 Dudley Road, Mendon, Worcester County, Massachusetts, United States, 01756

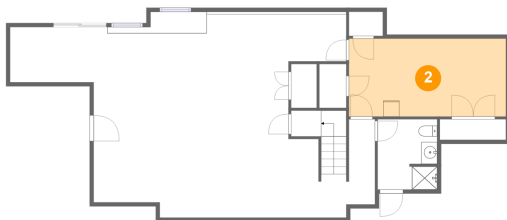
1 Floor 1 - Bath



Dimensions: 7'6" x 8'10"
Area: 65 sq. ft
Counted as Living Area:
Yes

Heated: Yes
Finished: Yes
Enclosed: Yes
Contiguous:
Yes
Permitted: Yes
Wet Space: Yes
Addition: No
Conversion: No

2 Floor 1 - Storage

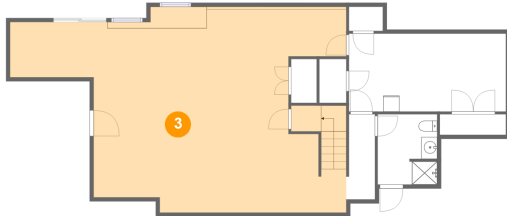


Dimensions: 19'9" x 9'9"
Area: 193 sq. ft
Counted as Living Area: No

Heated: Yes
Finished: Yes
Enclosed: No
Contiguous: Yes
Permitted: Yes
Wet Space: No
Addition: No
Conversion: No

7 Dudley Road, Mendon, Worcester County, Massachusetts, United States, 01756

3 Floor 1 - Recreation Room / Media Room



Dimensions: 42'3" x 25'10"
Area: 813 sq. ft
Counted as Living Area:
Yes

Heated: Yes
Finished: Yes
Enclosed: Yes
Contiguous:
Yes
Permitted: Yes
Wet Space: No
Addition: No
Conversion: No

4 Floor 1 - Hall



Dimensions: 3'7" x 10'8"
Area: 36 sq. ft
Counted as Living Area:
Yes

Heated: Yes
Finished: Yes
Enclosed: Yes
Contiguous:
Yes
Permitted: Yes
Wet Space: No
Addition: No
Conversion: No

5 Floor 2 - Family Room



Dimensions: 17'3" x 23'3"
Area: 413 sq. ft
Counted as Living Area:
Yes

Heated: Yes
Finished: Yes
Enclosed: Yes
Contiguous:
Yes
Permitted: Yes
Wet Space: No
Addition: No
Conversion: No

7 Dudley Road, Mendon, Worcester County, Massachusetts, United States, 01756

6 Floor 2 - Garage



Dimensions: 24'10" x 32'9"
Area: 816 sq. ft
Counted as Living Area: No

Heated: No
Finished: No
Enclosed: Yes
Contiguous: Yes
Permitted: Yes
Wet Space: No
Addition: No
Conversion: No

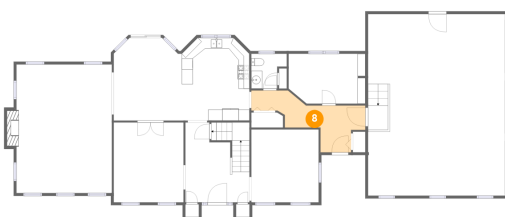
7 Floor 2 - Living Room



Dimensions: 12'2" x 13'2"
Area: 161 sq. ft
Counted as Living Area:
Yes

Heated: Yes
Finished: Yes
Enclosed: Yes
Contiguous:
Yes
Permitted: Yes
Wet Space: No
Addition: No
Conversion: No

8 Floor 2 - Mud Room



Dimensions: 20'8" x 8'5"
Area: 112 sq. ft
Counted as Living Area:
Yes

Heated: Yes
Finished: Yes
Enclosed: Yes
Contiguous:
Yes
Permitted: Yes
Wet Space: No
Addition: No
Conversion: No

7 Dudley Road, Mendon, Worcester County, Massachusetts, United States, 01756

9 Floor 2 - Dining Area



Dimensions: 12'8" x 14'5"
Area: 183 sq. ft
Counted as Living Area:
Yes

Heated: Yes
Finished: Yes
Enclosed: Yes
Contiguous:
Yes
Permitted: Yes
Wet Space: No
Addition: No
Conversion: No

10 Floor 2 - Kitchen



Dimensions: 12'3" x 14'11"
Area: 175 sq. ft
Counted as Living Area:
Yes

Heated: Yes
Finished: Yes
Enclosed: Yes
Contiguous:
Yes
Permitted: Yes
Wet Space: No
Addition: No
Conversion: No

11 Floor 2 - Office



Dimensions: 13'11" x 9'0"
Area: 120 sq. ft
Counted as Living Area:
Yes

Heated: Yes
Finished: Yes
Enclosed: Yes
Contiguous:
Yes
Permitted: Yes
Wet Space: No
Addition: No
Conversion: No

7 Dudley Road, Mendon, Worcester County, Massachusetts, United States, 01756

12 Floor 2 - Breakfast Nook



Dimensions: 12'4" x 14'11"
Area: 174 sq. ft
Counted as Living Area:
Yes

Heated: Yes
Finished: Yes
Enclosed: Yes
Contiguous:
Yes
Permitted: Yes
Wet Space: No
Addition: No
Conversion: No

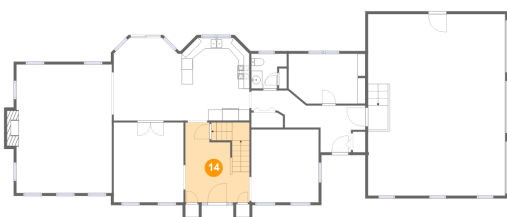
13 Floor 2 - Wc



Dimensions: 6'5" x 6'3"
Area: 33 sq. ft
Counted as Living Area:
Yes

Heated: Yes
Finished: Yes
Enclosed: Yes
Contiguous:
Yes
Permitted: Yes
Wet Space: Yes
Addition: No
Conversion: No

14 Floor 2 - Foyer



Dimensions: 11'7" x 14'5"
Area: 164 sq. ft
Counted as Living Area:
Yes

Heated: Yes
Finished: Yes
Enclosed: Yes
Contiguous:
Yes
Permitted: Yes
Wet Space: No
Addition: No
Conversion: No

7 Dudley Road, Mendon, Worcester County, Massachusetts, United States, 01756

15 Floor 3 - Primary Bedroom



Dimensions: 36'8" x 32'9"
Area: 640 sq. ft
Counted as Living Area:
Yes

Heated: Yes
Finished: Yes
Enclosed: Yes
Contiguous:
Yes
Permitted: Yes
Wet Space: No
Addition: No
Conversion: No

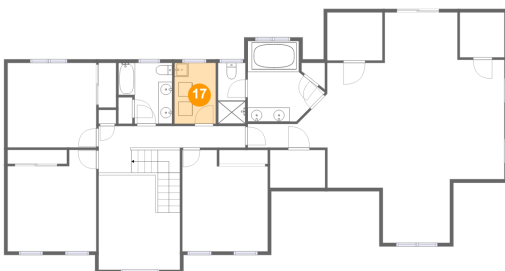
16 Floor 3 - Bedroom



Dimensions: 12'8" x 12'0"
Area: 152 sq. ft
Counted as Living Area:
Yes

Heated: Yes
Finished: Yes
Enclosed: Yes
Contiguous:
Yes
Permitted: Yes
Wet Space: No
Addition: No
Conversion: No

17 Floor 3 - Laundry



Dimensions: 5'11" x 8'8"
Area: 51 sq. ft
Counted as Living Area:
Yes

Heated: Yes
Finished: Yes
Enclosed: Yes
Contiguous:
Yes
Permitted: Yes
Wet Space: No
Addition: No
Conversion: No

7 Dudley Road, Mendon, Worcester County, Massachusetts, United States, 01756

18 Floor 3 - W.i.c.



Dimensions: 7'11" x 6'10"
Area: 54 sq. ft
Counted as Living Area:
Yes

Heated: Yes
Finished: Yes
Enclosed: Yes
Contiguous:
Yes
Permitted: Yes
Wet Space: No
Addition: No
Conversion: No

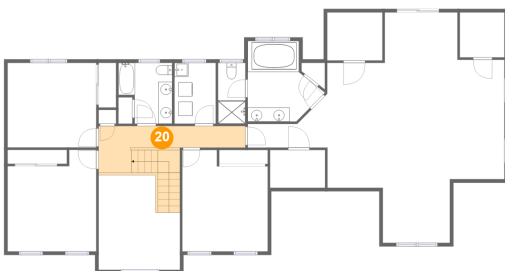
19 Floor 3 - W.i.c.



Dimensions: 7'10" x 5'4"
Area: 42 sq. ft
Counted as Living Area:
Yes

Heated: Yes
Finished: Yes
Enclosed: Yes
Contiguous:
Yes
Permitted: Yes
Wet Space: No
Addition: No
Conversion: No

20 Floor 3 - Hall



Dimensions: 21'0" x 6'8"
Area: 128 sq. ft
Counted as Living Area:
Yes

Heated: Yes
Finished: Yes
Enclosed: Yes
Contiguous:
Yes
Permitted: Yes
Wet Space: No
Addition: No
Conversion: No

7 Dudley Road, Mendon, Worcester County, Massachusetts, United States, 01756

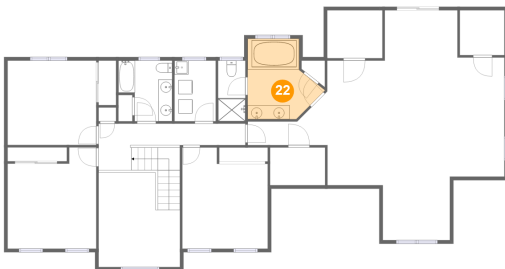
21 Floor 3 - Bath



Dimensions: 3'10" x 8'8"
Area: 34 sq. ft
Counted as Living Area:
Yes

Heated: Yes
Finished: Yes
Enclosed: Yes
Contiguous:
Yes
Permitted: Yes
Wet Space: Yes
Addition: No
Conversion: No

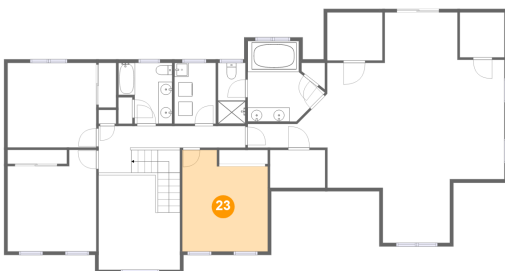
22 Floor 3 - Primary Bath



Dimensions: 11'0" x 11'6"
Area: 96 sq. ft
Counted as Living Area:
Yes

Heated: Yes
Finished: Yes
Enclosed: Yes
Contiguous:
Yes
Permitted: Yes
Wet Space: Yes
Addition: No
Conversion: No

23 Floor 3 - Bedroom



Dimensions: 12'2" x 14'5"
Area: 159 sq. ft
Counted as Living Area:
Yes

Heated: Yes
Finished: Yes
Enclosed: Yes
Contiguous:
Yes
Permitted: Yes
Wet Space: No
Addition: No
Conversion: No

7 Dudley Road, Mendon, Worcester County, Massachusetts, United States, 01756

24 Floor 3 - Bath



Dimensions: 7'8" x 8'8"
Area: 57 sq. ft
Counted as Living Area:
Yes

Heated: Yes
Finished: Yes
Enclosed: Yes
Contiguous:
Yes
Permitted: Yes
Wet Space: Yes
Addition: No
Conversion: No

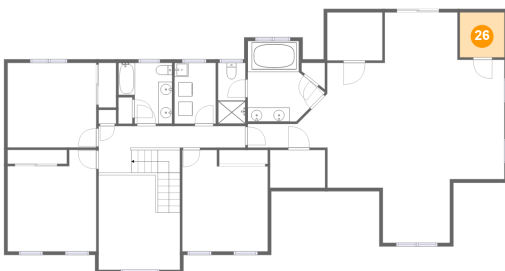
25 Floor 3 - Bedroom



Dimensions: 12'8" x 14'5"
Area: 162 sq. ft
Counted as Living Area:
Yes

Heated: Yes
Finished: Yes
Enclosed: Yes
Contiguous:
Yes
Permitted: Yes
Wet Space: No
Addition: No
Conversion: No

26 Floor 3 - W.i.c.

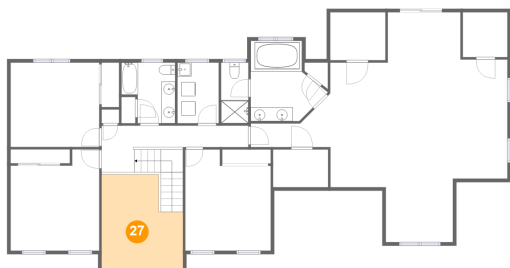


Dimensions: 6'4" x 6'4"
Area: 41 sq. ft
Counted as Living Area:
Yes

Heated: Yes
Finished: Yes
Enclosed: Yes
Contiguous:
Yes
Permitted: Yes
Wet Space: No
Addition: No
Conversion: No

7 Dudley Road, Mendon, Worcester County, Massachusetts, United States, 01756

27 Floor 3 - Open To Below



Dimensions: 11'7" x 13'6"
Area: 138 sq. ft
Counted as Living Area: No

Heated: No
Finished: No
Enclosed: No
Contiguous: Yes
Permitted: No
Wet Space: No
Addition: No
Conversion: No