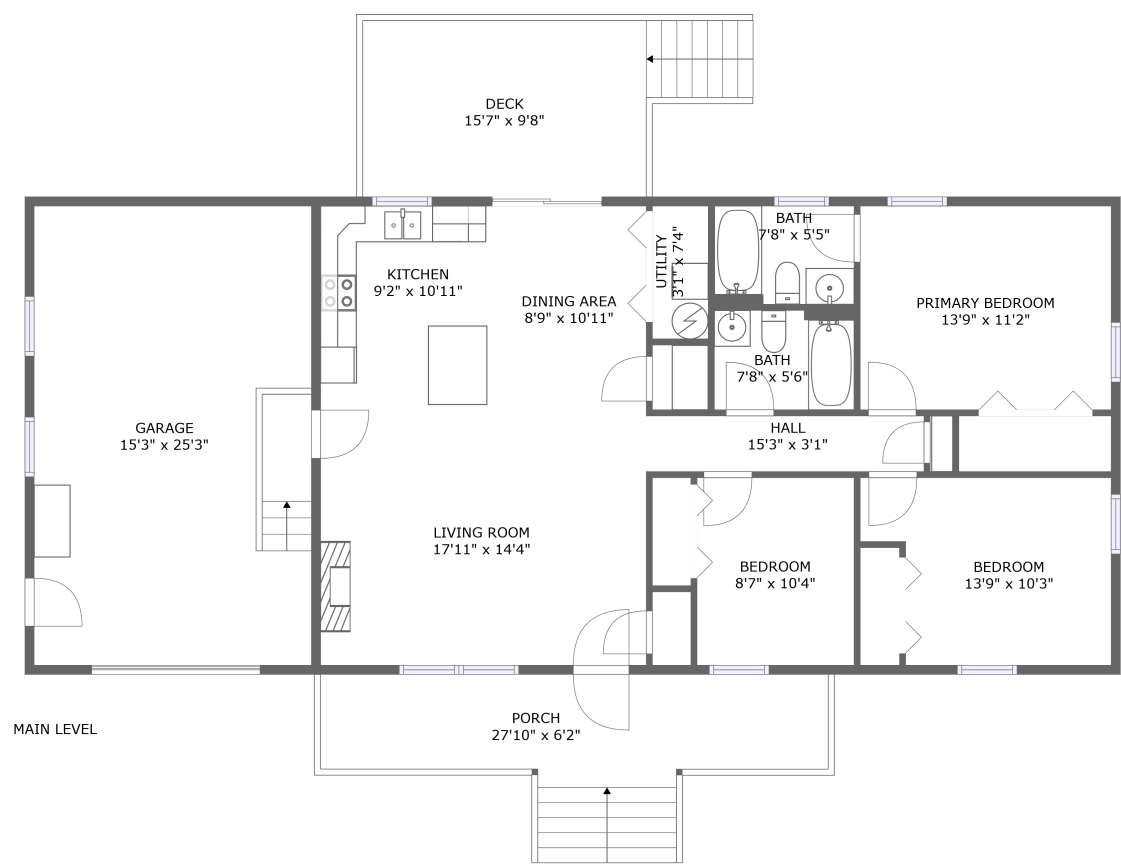


Home report

801 Indian Ridge Drive, Moneta, Bedford County, Virginia, United States, 24121




Total Area: 1094 sq. ft

Floor 1: 1094 sq. ft


Excluded: Garage 384 sq. ft, Deck 175 sq. ft, Porch 184 sq. ft, Walls: 98 sq. ft

Property summary

 **1** Floors

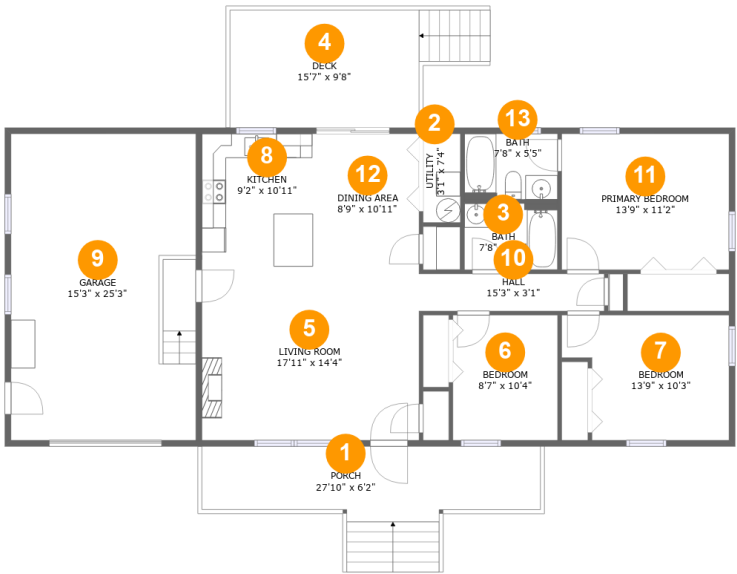
 **3** Bedrooms

 **2** Bathrooms

 **1** Garages

Home report

801 Indian Ridge Drive, Moneta, Bedford County, Virginia, United States, 24121



Room dimensions

Floor 1

Total:1094sqft Excluded: 743sqft

#		Max Dimensions	sqft	Included
1	Porch	27'10" x 6'2"	184 sq. ft	No
2	Utility	3'1" x 7'4"	22 sq. ft	Yes
3	Bath	7'8" x 5'6"	42 sq. ft	Yes
4	Deck	15'7" x 9'8"	175 sq. ft	No
5	Living Room	17'11" x 14'4"	256 sq. ft	Yes
6	Bedroom	8'7" x 10'4"	89 sq. ft	Yes
7	Bedroom	13'9" x 10'3"	125 sq. ft	Yes
8	Kitchen	9'2" x 10'11"	99 sq. ft	Yes
9	Garage	15'3" x 25'3"	384 sq. ft	No
10	Hall	15'3" x 3'1"	47 sq. ft	Yes
11	Primary Bedroom	13'9" x 11'2"	154 sq. ft	Yes

Home report

801 Indian Ridge Drive, Moneta, Bedford County, Virginia, United States, 24121

#		Max Dimensions	sqft	Included
12	Dining Area	8'9" x 10'11"	95 sq. ft	Yes
13	Bath	7'8" x 5'5"	41 sq. ft	Yes

1 Floor 1 - Porch



Max Dimensions: 27'10" x 6'2"
Calculated Area: 184 sq. ft
Included: No

Heated: No
Finished: Yes
Enclosed: No
Contiguous: Yes
Permitted: Yes
Wet space: No
Addition: No
Conversion: No

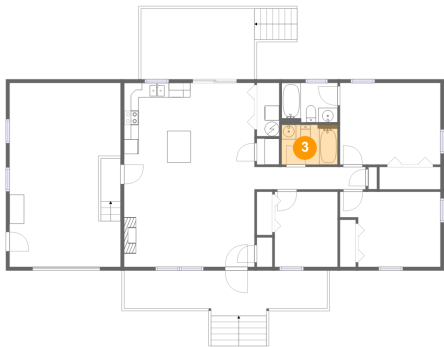
2 Floor 1 - Utility



Max Dimensions: 3'1" x 7'4"
Calculated Area: 22 sq. ft
Included: Yes

Heated: Yes
Finished: Yes
Enclosed: Yes
Contiguous: Yes
Permitted: Yes
Wet space: No
Addition: No
Conversion: No

3 Floor 1 - Bath



Max Dimensions: 7'8" x 5'6"
Calculated Area: 42 sq. ft
Included: Yes

Heated: Yes
Finished: Yes
Enclosed: Yes
Contiguous: Yes
Permitted: Yes
Wet space: Yes
Addition: No
Conversion: No

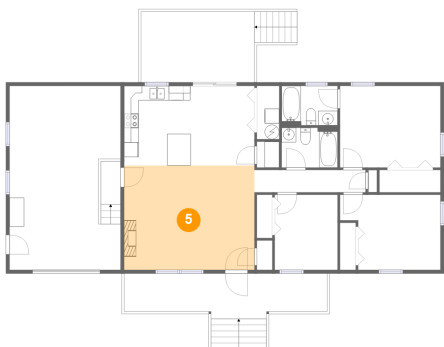
4 Floor 1 - Deck



Max Dimensions: 15'7" x 9'8"
Calculated Area: 175 sq. ft
Included: No

Heated: No
Finished: Yes
Enclosed: No
Contiguous: Yes
Permitted: Yes
Wet space: No
Addition: No
Conversion: No

5 Floor 1 - Living Room

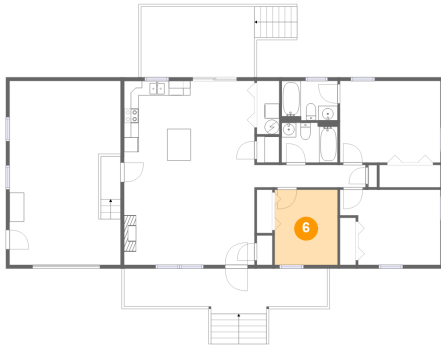


Max Dimensions: 17'11" x 14'4"
Calculated Area: 256 sq. ft
Included: Yes

Heated: Yes
Finished: Yes
Enclosed: Yes
Contiguous: Yes
Permitted: Yes
Wet space: No
Addition: No
Conversion: No

801 Indian Ridge Drive, Moneta, Bedford County, Virginia, United States, 24121

6 Floor 1 - Bedroom



Max Dimensions: 8'7" x 10'4"
Calculated Area: 89 sq. ft
Included: Yes

Heated: Yes
Finished: Yes
Enclosed: Yes
Contiguous: Yes
Permitted: Yes
Wet space: No
Addition: No
Conversion: No

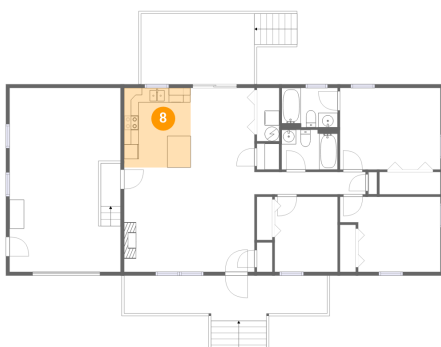
7 Floor 1 - Bedroom



Max Dimensions: 13'9" x 10'3"
Calculated Area: 125 sq. ft
Included: Yes

Heated: Yes
Finished: Yes
Enclosed: Yes
Contiguous: Yes
Permitted: Yes
Wet space: No
Addition: No
Conversion: No

8 Floor 1 - Kitchen

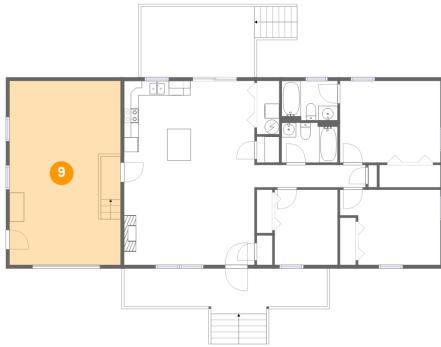


Max Dimensions: 9'2" x 10'11"
Calculated Area: 99 sq. ft
Included: Yes

Heated: Yes
Finished: Yes
Enclosed: Yes
Contiguous: Yes
Permitted: Yes
Wet space: No
Addition: No
Conversion: No

801 Indian Ridge Drive, Moneta, Bedford County, Virginia, United States, 24121

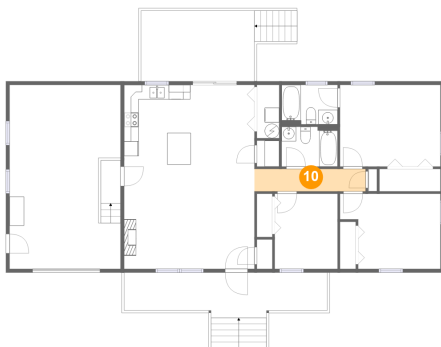
9 Floor 1 - Garage



Max Dimensions: 15'3" x 25'3"
Calculated Area: 384 sq. ft
Included: No

Heated: No
Finished: No
Enclosed: Yes
Contiguous: Yes
Permitted: Yes
Wet space: No
Addition: No
Conversion: No

10 Floor 1 - Hall



Max Dimensions: 15'3" x 3'1"
Calculated Area: 47 sq. ft
Included: Yes

Heated: Yes
Finished: Yes
Enclosed: Yes
Contiguous: Yes
Permitted: Yes
Wet space: No
Addition: No
Conversion: No

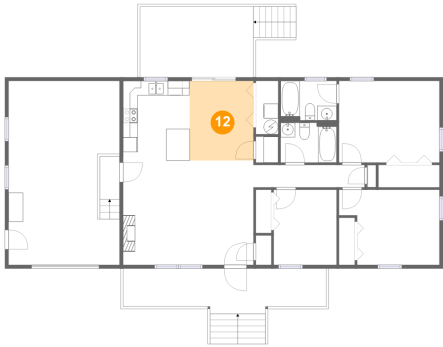
11 Floor 1 - Primary Bedroom



Max Dimensions: 13'9" x 11'2"
Calculated Area: 154 sq. ft
Included: Yes

Heated: Yes
Finished: Yes
Enclosed: Yes
Contiguous: Yes
Permitted: Yes
Wet space: No
Addition: No
Conversion: No

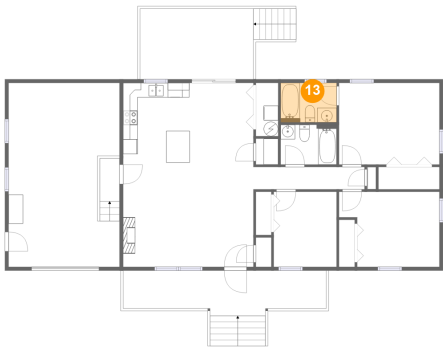
12 Floor 1 - Dining Area



Max Dimensions: 8'9" x 10'11"
Calculated Area: 95 sq. ft
Included: Yes

Heated: Yes
Finished: Yes
Enclosed: Yes
Contiguous: Yes
Permitted: Yes
Wet space: No
Addition: No
Conversion: No

13 Floor 1 - Bath



Max Dimensions: 7'8" x 5'5"
Calculated Area: 41 sq. ft
Included: Yes

Heated: Yes
Finished: Yes
Enclosed: Yes
Contiguous: Yes
Permitted: Yes
Wet space: Yes
Addition: No
Conversion: No