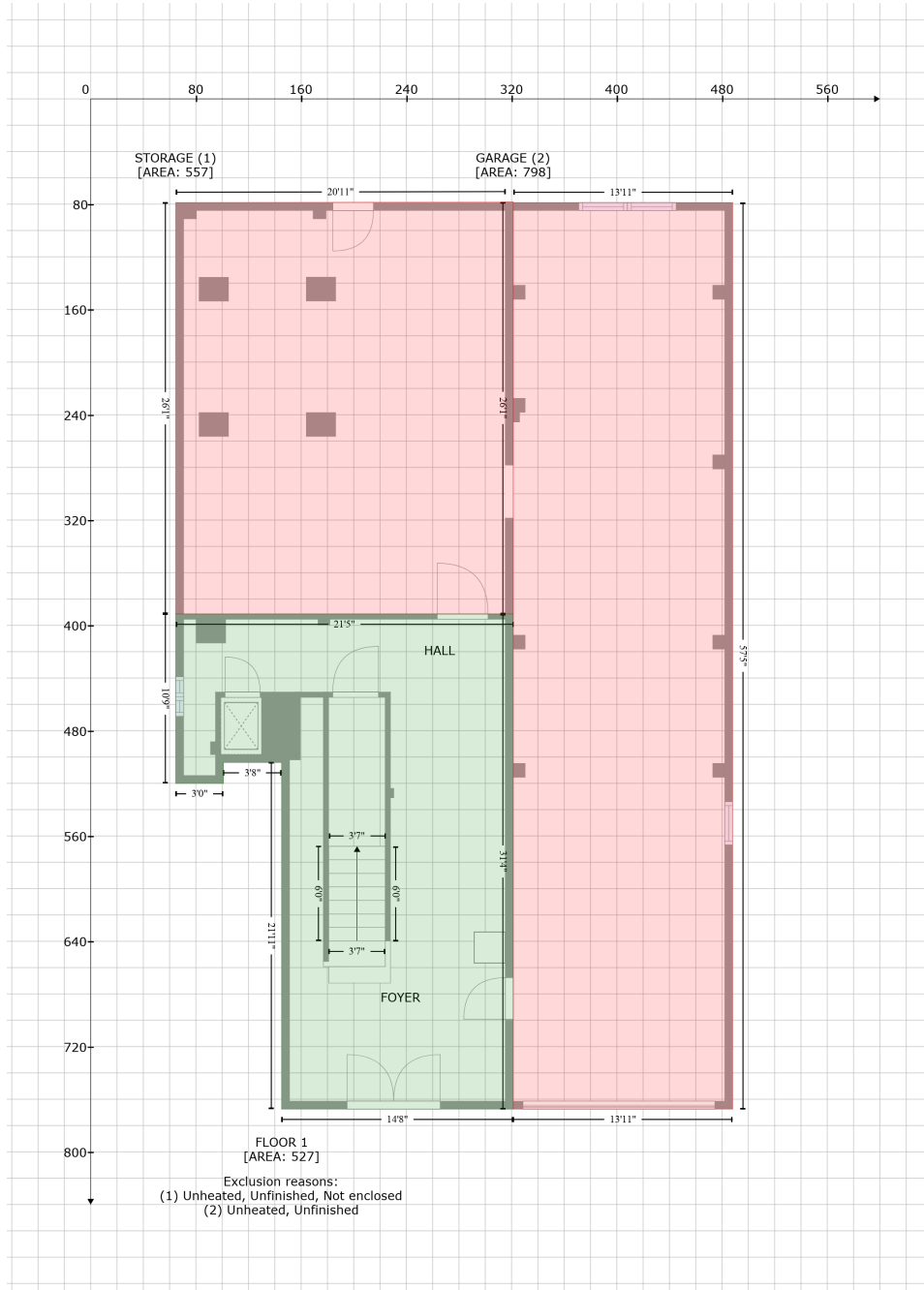


16021 Gulf Boulevard, Redington Beach, Pinellas County, Florida, United States, 33708

Gross Living Area: 3973 sq. ft



Space	Area (sq. ft)	Calculation <small>Coordinate Polygon Area Algorithm using inches</small>
FLOOR 1 (Living area)	527	$-((321.3 + 321.3) * (391.3 - 767.5) + (321.3 + 145.2) * (767.5 - 767.5) + (145.2 + 145.2) * (767.5 - 504.2) + (145.2 + 100.9) * (504.2 - 504.2) + (100.9 + 100.9) * (504.2 - 520.1) + (100.9 + 64.7) * (520.1 - 520.1) + (64.7 + 64.7) * (520.1 - 391.3) + (64.7 + 321.3) * (391.3 - 391.3)) * 0.5 * 0.00694$
STORAGE (Non-living area)	557	$-((321.3 + 321.3) * (78.3 - 391.3) + (321.3 + 64.7) * (391.3 - 391.3) + (64.7 + 64.7) * (391.3 - 78.8) + (64.7 + 315.3) * (78.8 - 78.3) + (315.3 + 321.3) * (78.3 - 78.3)) * 0.5 * 0.00694$

16021 Gulf Boulevard, Redington Beach, Pinellas County, Florida, United States, 33708

Gross Living Area: 3973 sq. ft

Space	Area (sq. ft)	Calculation <small>Coordinate Polygon Area Algorithm using inches</small>
GARAGE (Non-living area)	798	$-((488.1 + 488.1) * (78.8 - 767.5) + (488.1 + 321.3) * (767.5 - 767.5) + (321.3 + 321.3) * (767.5 - 78.8) + (321.3 + 488.1) * (78.8 - 78.8)) * 0.5 * 0.00694$

16021 Gulf Boulevard, Redington Beach, Pinellas County, Florida, United States, 33708

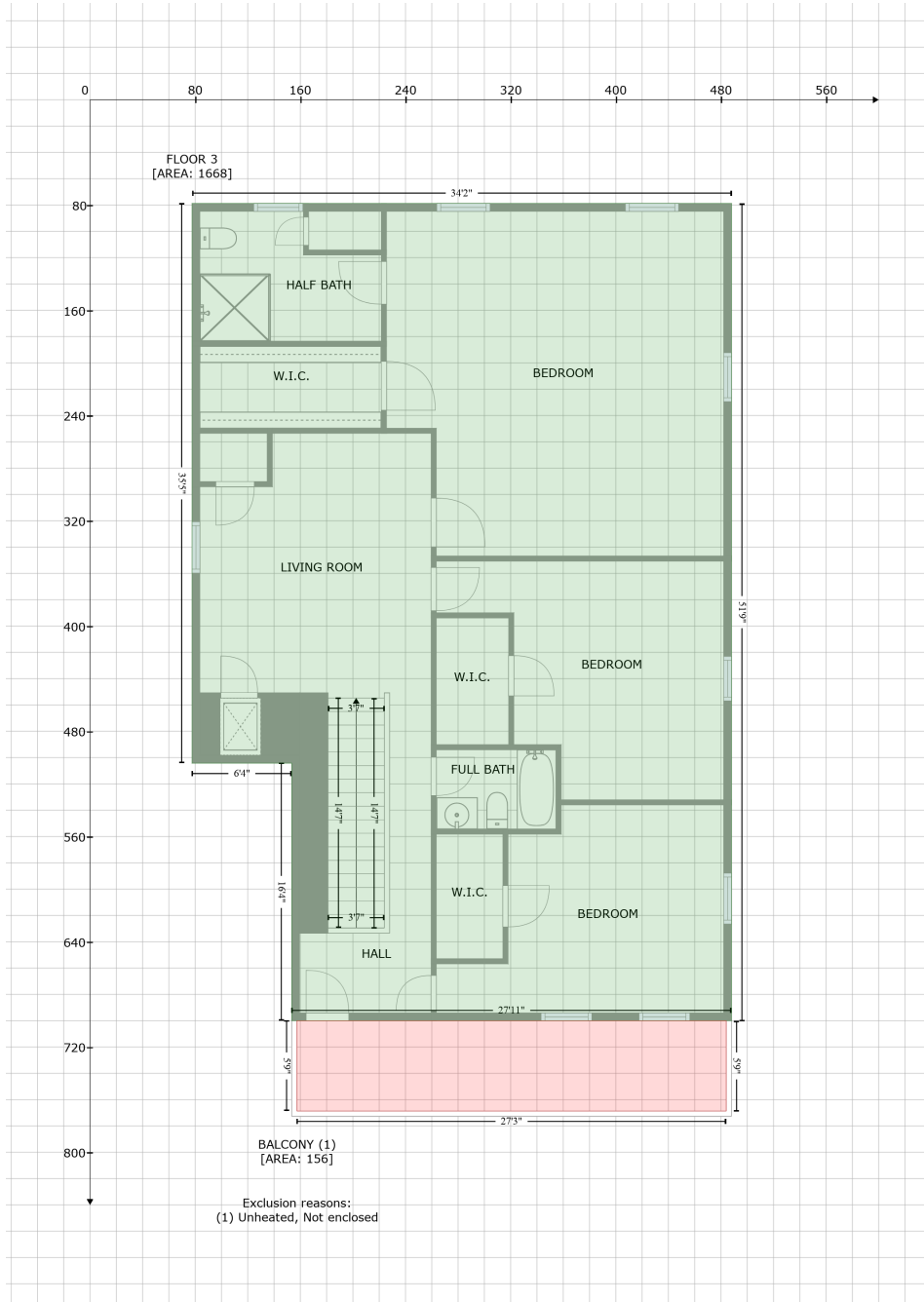
Gross Living Area: 3973 sq. ft



Space	Area (sq. ft)	Calculation
FLOOR 2 (Living area)	1778	Coordinate Polygon Area Algorithm using inches $-((588.1 + 588.1) * (78.8 - 700) + (588.1 + 253.4) * (700 - 700) + (253.4 + 253.4) * (700 - 504.3) + (253.4 + 177.5) * (504.3 - 504.3) + (177.5 + 177.5) * (504.3 - 489.9) + (177.5 + 78.8) * (489.9 - 489.9) + (78.8 + 78.8) * (489.9 - 329.3) + (78.8 + 177.6) * (329.3 - 329.3) + (177.6 + 177.6) * (329.3 - 78.8) + (177.6 + 588.1) * (78.8 - 78.8)) * 0.5 * 0.00694$
BALCONY (Non-living area)	166	$-((584.1 + 584.1) * (700 - 773) + (584.1 + 257.3) * (773 - 773) + (257.3 + 257.3) * (773 - 700) + (257.3 + 584.1) * (700 - 700)) * 0.5 * 0.00694$

16021 Gulf Boulevard, Redington Beach, Pinellas County, Florida, United States, 33708

Gross Living Area: 3973 sq. ft



Space	Area (sq. ft)	Calculation
FLOOR 3 (Living area)	1668	Coordinate Polygon Area Algorithm using inches $-\left((488.1 + 488.1) * (78.8 - 700) + (488.1 + 153.4) * (700 - 700) + (153.4 + 153.4) * (700 - 504.3) + (153.4 + 77.6) * (504.3 - 504.3) + (77.6 + 77.6) * (504.3 - 78.8) + (77.6 + 488.1) * (78.8 - 78.8)\right) * 0.5 * 0.00694$
BALCONY (Non-living area)	156	$-\left((484 + 484) * (700 - 768.7) + (484 + 157.4) * (768.7 - 768.7) + (157.4 + 157.4) * (768.7 - 700) + (157.4 + 484) * (700 - 700)\right) * 0.5 * 0.00694$