

Home data report

2316 Carmichael Rd, White Pine, TN, US



Total Area: 2058 sq. ft

Floor 1: 1856 sq. ft, Floor 2: 202 sq. ft

Excluded: Low ceiling 76 sq. ft, Walls: 137 sq. ft

Property summary

 **2** Floors

 **4** Bedrooms

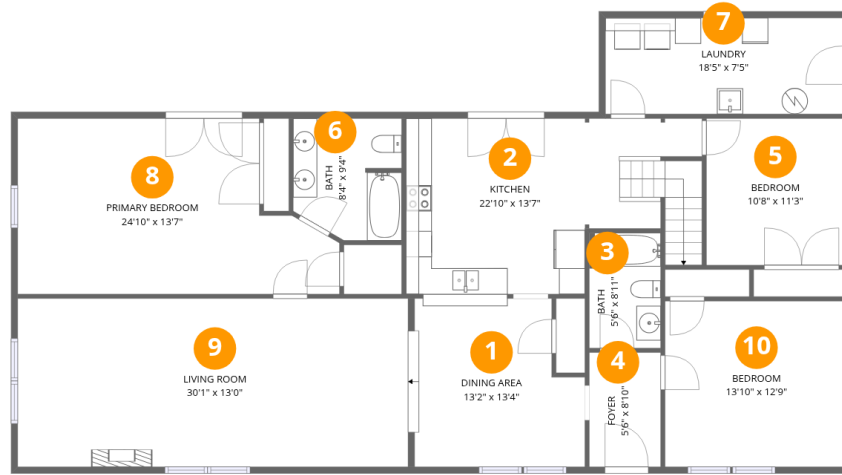
 **2** Bathrooms

Scan captured on Tue, 04 Nov 2025 19:04:16 GMT

FLOOR PLAN CREATED BY CUBICASA APP. MEASUREMENTS ARE CONSIDERED RELIABLE BUT NOT ACCURATE.

Home data report

2316 Carmichael Rd, White Pine, TN, US

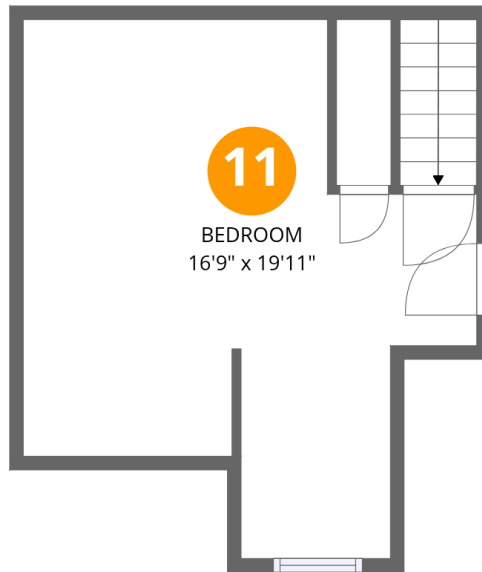


Room dimensions

Floor 1

Total: 1856 sqft Excluded: 0 sqft

#		Dimensions	sqft	Counted as living area
1	Dining Area	13'2" x 13'4"	161 sq. ft	Yes
2	Kitchen	22'10" x 13'7"	270 sq. ft	Yes
3	Bath	5'6" x 8'11"	49 sq. ft	Yes
4	Foyer	5'6" x 8'10"	49 sq. ft	Yes
5	Bedroom	10'8" x 11'3"	120 sq. ft	Yes
6	Bath	8'4" x 9'4"	73 sq. ft	Yes
7	Laundry	18'5" x 7'5"	137 sq. ft	Yes
8	Primary Bedroom	24'10" x 13'7"	286 sq. ft	Yes
9	Living Room	30'1" x 13'0"	391 sq. ft	Yes
10	Bedroom	13'10" x 12'9"	177 sq. ft	Yes



Room dimensions

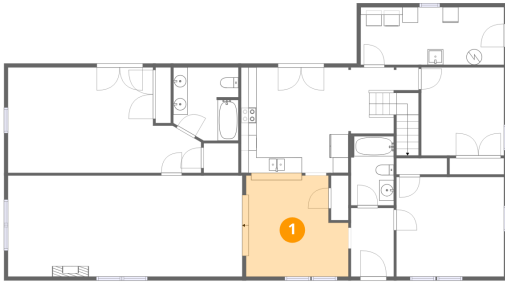
Floor 2

Total: 202sqft

Excluded: 76sqft

#		Dimensions	sqft	Counted as living area
11	Bedroom	16'9" x 19'11"	171 sq. ft	Yes

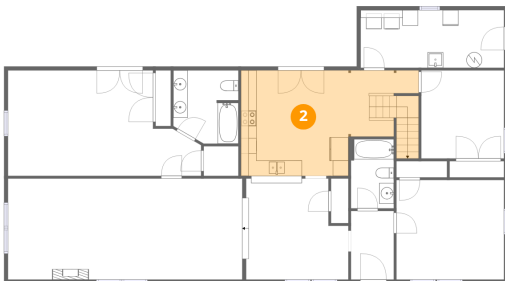
1 Floor 1 - Dining Area



Dimensions: 13'2" x 13'4"
Area: 161 sq. ft
Counted as living area: Yes

Heated: Yes
Finished: Yes
Enclosed: Yes
Contiguous: Yes
Permitted: Yes
Wet space: No
Addition: No
Conversion: No

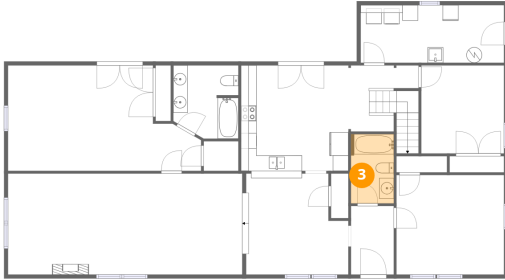
2 Floor 1 - Kitchen



Dimensions: 22'10" x 13'7"
Area: 270 sq. ft
Counted as living area: Yes

Heated: Yes
Finished: Yes
Enclosed: Yes
Contiguous: Yes
Permitted: Yes
Wet space: No
Addition: No
Conversion: No

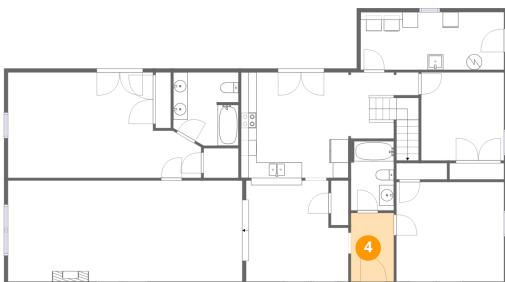
3 Floor 1 - Bath



Dimensions: 5'6" x 8'11"
Area: 49 sq. ft
Counted as living area: Yes

Heated: Yes
Finished: Yes
Enclosed: Yes
Contiguous: Yes
Permitted: Yes
Wet space: Yes
Addition: No
Conversion: No

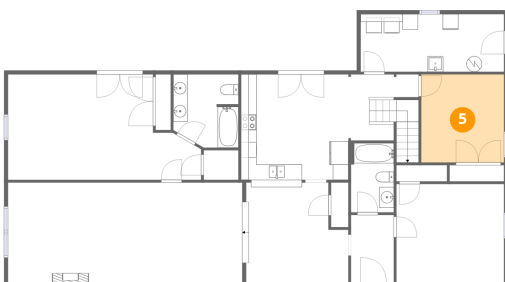
4 Floor 1 - Foyer



Dimensions: 5'6" x 8'10"
Area: 49 sq. ft
Counted as living area: Yes

Heated: Yes
Finished: Yes
Enclosed: Yes
Contiguous: Yes
Permitted: Yes
Wet space: No
Addition: No
Conversion: No

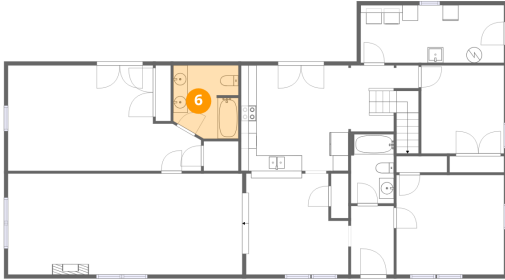
5 Floor 1 - Bedroom



Dimensions: 10'8" x 11'3"
Area: 120 sq. ft
Counted as living area: Yes

Heated: Yes
Finished: Yes
Enclosed: Yes
Contiguous: Yes
Permitted: Yes
Wet space: No
Addition: No
Conversion: No

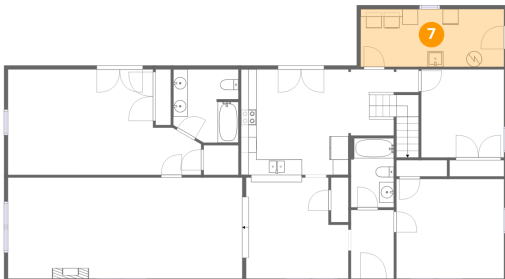
6 Floor 1 - Bath



Dimensions: 8'4" x 9'4"
Area: 73 sq. ft
Counted as living area: Yes

Heated: Yes
Finished: Yes
Enclosed: Yes
Contiguous: Yes
Permitted: Yes
Wet space: Yes
Addition: No
Conversion: No

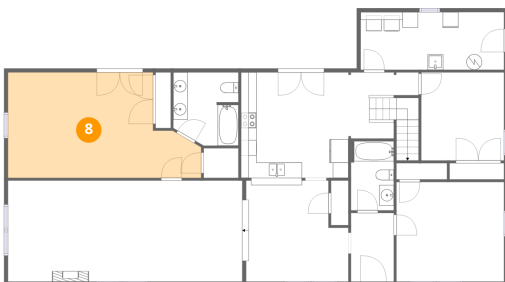
7 Floor 1 - Laundry



Dimensions: 18'5" x 7'5"
Area: 137 sq. ft
Counted as living area: Yes

Heated: Yes
Finished: Yes
Enclosed: Yes
Contiguous: Yes
Permitted: Yes
Wet space: No
Addition: No
Conversion: No

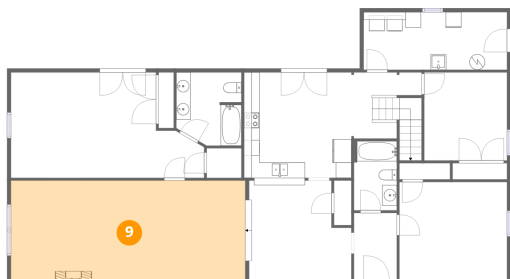
8 Floor 1 - Primary Bedroom



Dimensions: 24'10" x 13'7"
Area: 286 sq. ft
Counted as living area: Yes

Heated: Yes
Finished: Yes
Enclosed: Yes
Contiguous: Yes
Permitted: Yes
Wet space: No
Addition: No
Conversion: No

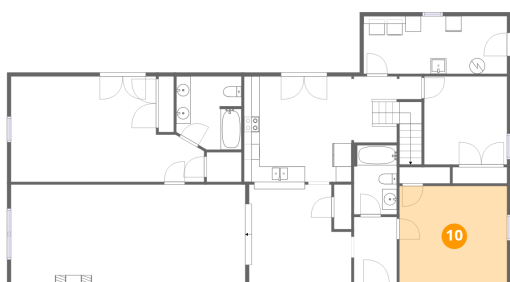
9 Floor 1 - Living Room



Dimensions: 30'1" x 13'0"
Area: 391 sq. ft
Counted as living area: Yes

Heated: Yes
Finished: Yes
Enclosed: Yes
Contiguous: Yes
Permitted: Yes
Wet space: No
Addition: No
Conversion: No

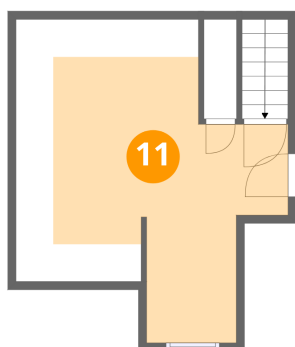
10 Floor 1 - Bedroom



Dimensions: 13'10" x 12'9"
Area: 177 sq. ft
Counted as living area: Yes

Heated: Yes
Finished: Yes
Enclosed: Yes
Contiguous: Yes
Permitted: Yes
Wet space: No
Addition: No
Conversion: No

11 Floor 2 - Bedroom



Dimensions: 16'9" x 19'11"
Area: 171 sq. ft
Counted as living area: Yes

Heated: Yes
Finished: Yes
Enclosed: Yes
Contiguous: Yes
Permitted: Yes
Wet space: No
Addition: No
Conversion: No