


Home report


1931 Parkland Drive, Bedford Hills, Lynchburg, Lynchburg city,
Virginia, United States, 24503




Property summary




0
Garages




3
Bedrooms




4
Bathrooms




0
Half baths



3
Floors



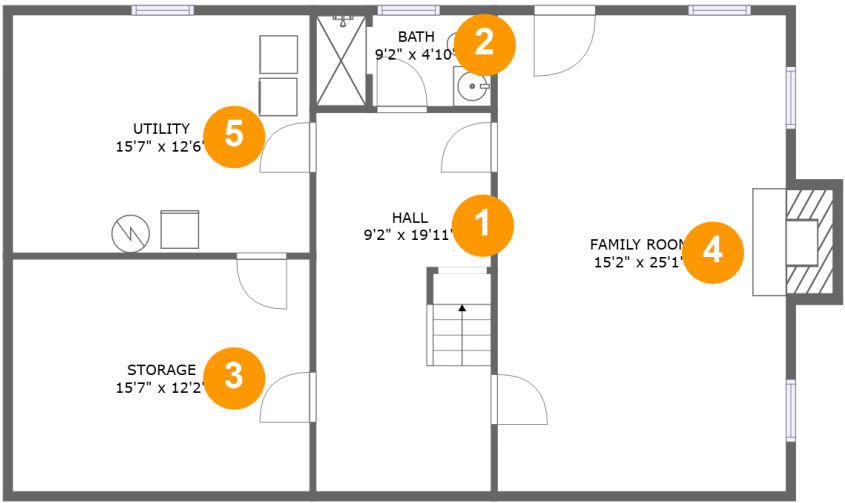
3,212
Gross living
area sqft



4,642
Total sqft

Home report

1931 Parkland Drive, Bedford Hills, Lynchburg, Lynchburg city,
Virginia, United States, 24503



Room dimensions

Floor 1 Total sqft: 1102 Living area: 666

#		Dimensions	sqft	Counted as living area
1	Hall	9'2" x 19'11"	182 sq. ft	Yes
2	Bath	9'2" x 4'10"	43 sq. ft	Yes
3	Storage	15'7" x 12'2"	191 sq. ft	No
4	Family Room	15'2" x 25'1"	394 sq. ft	Yes
5	Utility	15'7" x 12'6"	195 sq. ft	No

Home report

1931 Parkland Drive, Bedford Hills, Lynchburg, Lynchburg city,
Virginia, United States, 24503



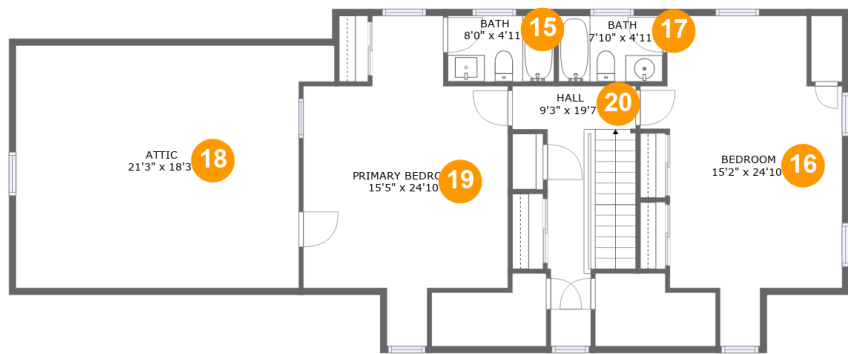
Room dimensions

Floor 2Total sqft: 2112 Living area: 1637

#		Dimensions	sqft	Counted as living area
6	Hall	6'9" x 4'1"	28 sq. ft	Yes
7	Bath	9'3" x 7'3"	60 sq. ft	Yes
8	Deck	15'4" x 14'7"	183 sq. ft	No
9	Foyer	9'4" x 14'1"	129 sq. ft	Yes
10	Dining Room	15'6" x 12'5"	192 sq. ft	Yes
11	Living Room	15'2" x 26'4"	414 sq. ft	Yes
12	Eat-in Kitchen	21'1" x 21'7"	456 sq. ft	Yes
13	Bedroom	15'6" x 13'7"	196 sq. ft	Yes
14	Covered Porch	20'11" x 12'1"	253 sq. ft	No

Home report

1931 Parkland Drive, Bedford Hills, Lynchburg, Lynchburg city,
Virginia, United States, 24503



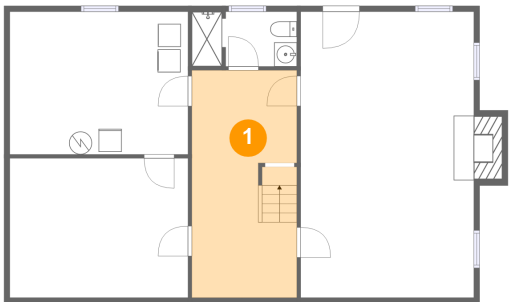
Room dimensions

Floor 3 Total sqft: 1428 Living area: 909

#		Dimensions	sqft	Counted as living area
15	Bath	8'0" x 4'11"	40 sq. ft	Yes
16	Bedroom	15'2" x 24'10"	272 sq. ft	Yes
17	Bath	7'10" x 4'11"	39 sq. ft	Yes
18	Attic	21'3" x 18'3"	265 sq. ft	No
19	Primary Bedroom	15'5" x 24'10"	275 sq. ft	Yes
20	Hall	9'3" x 19'7"	117 sq. ft	Yes

1931 Parkland Drive, Bedford Hills, Lynchburg, Lynchburg city,
Virginia, United States, 24503

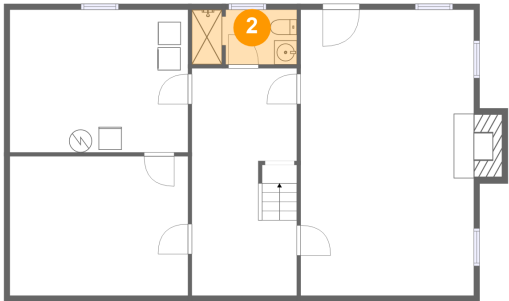
1 Floor 1 - Hall



Dimensions: 9'2" x 19'11"
Area: 182 sq. ft
Counted as living area: Yes

Heated: Yes
Finished: Yes
Enclosed: Yes
Contiguous: Yes
Permitted: Yes
Wet space: No
Addition: No
Conversion: No

2 Floor 1 - Bath

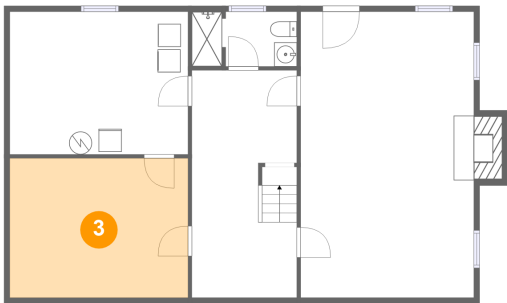


Dimensions: 9'2" x 4'10"
Area: 43 sq. ft
Counted as living area: Yes

Heated: Yes
Finished: Yes
Enclosed: Yes
Contiguous: Yes
Permitted: Yes
Wet space: Yes
Addition: No
Conversion: No

1931 Parkland Drive, Bedford Hills, Lynchburg, Lynchburg city,
Virginia, United States, 24503

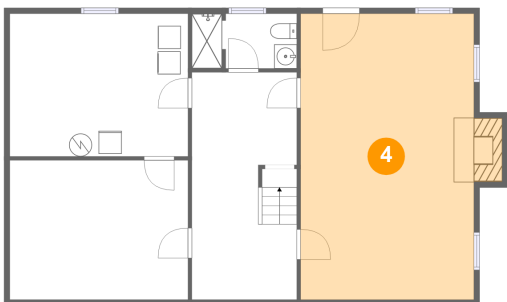
3 Floor 1 - Storage



Dimensions: 15'7" x 12'2"
Area: 191 sq. ft
Counted as living area: No

Heated: No
Finished: No
Enclosed: No
Contiguous: Yes
Permitted: Yes
Wet space: No
Addition: No
Conversion: No

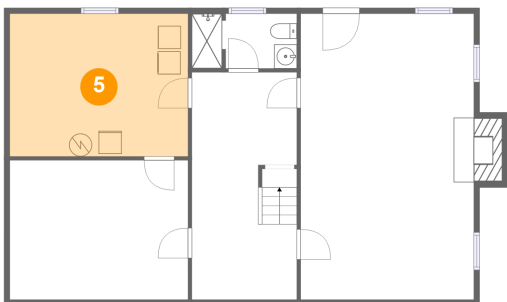
4 Floor 1 - Family Room



Dimensions: 15'2" x 25'1"
Area: 394 sq. ft
Counted as living area: Yes

Heated: Yes
Finished: Yes
Enclosed: Yes
Contiguous: Yes
Permitted: Yes
Wet space: No
Addition: No
Conversion: No

5 Floor 1 - Utility

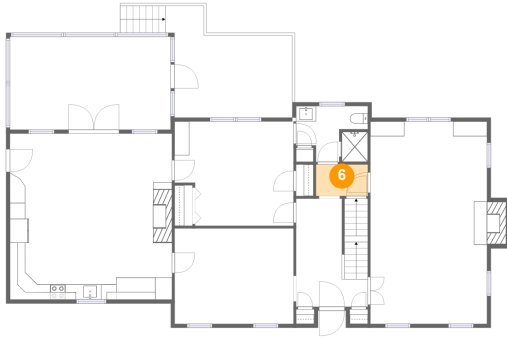


Dimensions: 15'7" x 12'6"
Area: 195 sq. ft
Counted as living area: No

Heated: Yes
Finished: No
Enclosed: Yes
Contiguous: Yes
Permitted: Yes
Wet space: No
Addition: No
Conversion: No

1931 Parkland Drive, Bedford Hills, Lynchburg, Lynchburg city,
Virginia, United States, 24503

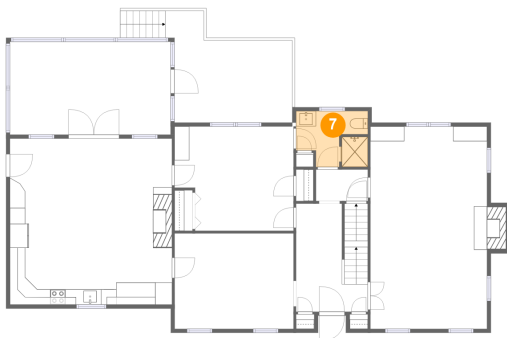
6 Floor 2 - Hall



Dimensions: 6'9" x 4'1"
Area: 28 sq. ft
Counted as living area: Yes

Heated: Yes
Finished: Yes
Enclosed: Yes
Contiguous: Yes
Permitted: Yes
Wet space: No
Addition: No
Conversion: No

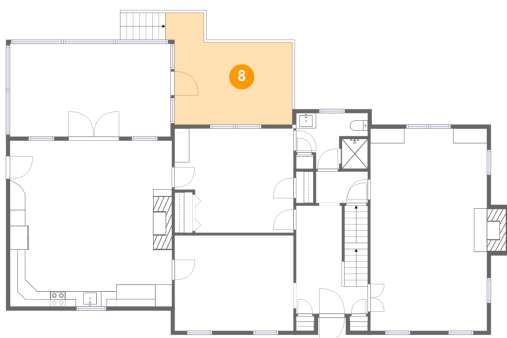
7 Floor 2 - Bath



Dimensions: 9'3" x 7'3"
Area: 60 sq. ft
Counted as living area: Yes

Heated: Yes
Finished: Yes
Enclosed: Yes
Contiguous: Yes
Permitted: Yes
Wet space: Yes
Addition: No
Conversion: No

8 Floor 2 - Deck



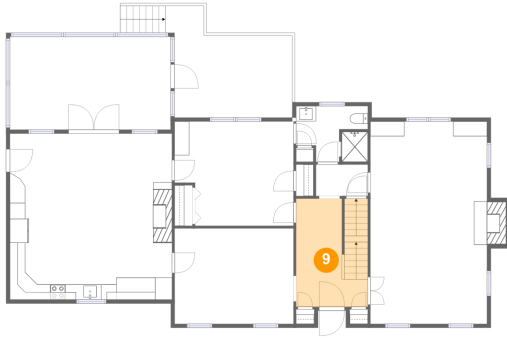
Dimensions: 15'4" x 14'7"
Area: 183 sq. ft
Counted as living area: No

Heated: No
Finished: Yes
Enclosed: No
Contiguous: Yes
Permitted: Yes
Wet space: No
Addition: No
Conversion: No

Home report

1931 Parkland Drive, Bedford Hills, Lynchburg, Lynchburg city,
Virginia, United States, 24503

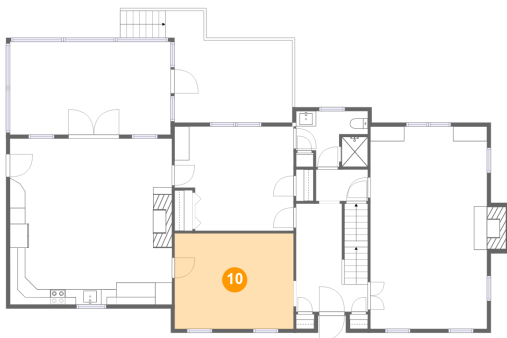
9 Floor 2 - Foyer



Dimensions: 9'4" x 14'1"
Area: 129 sq. ft
Counted as living area: Yes

Heated: Yes
Finished: Yes
Enclosed: Yes
Contiguous: Yes
Permitted: Yes
Wet space: No
Addition: No
Conversion: No

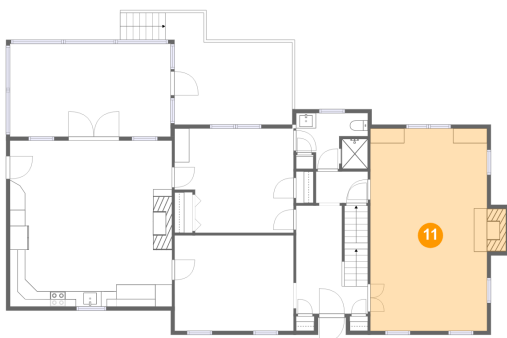
10 Floor 2 - Dining Room



Dimensions: 15'6" x 12'5"
Area: 192 sq. ft
Counted as living area: Yes

Heated: Yes
Finished: Yes
Enclosed: Yes
Contiguous: Yes
Permitted: Yes
Wet space: No
Addition: No
Conversion: No

11 Floor 2 - Living Room

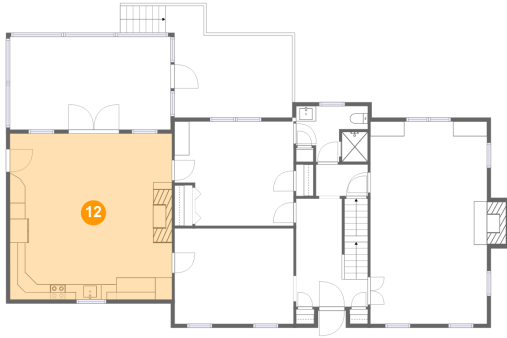


Dimensions: 15'2" x 26'4"
Area: 414 sq. ft
Counted as living area: Yes

Heated: Yes
Finished: Yes
Enclosed: Yes
Contiguous: Yes
Permitted: Yes
Wet space: No
Addition: No
Conversion: No

1931 Parkland Drive, Bedford Hills, Lynchburg, Lynchburg city,
Virginia, United States, 24503

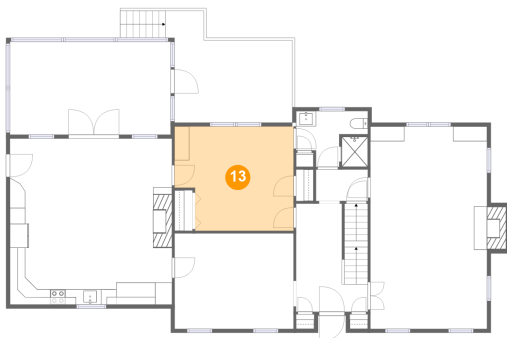
12 Floor 2 - Eat-in Kitchen



Dimensions: 21'1" x 21'7"
Area: 456 sq. ft
Counted as living area: Yes

Heated: Yes
Finished: Yes
Enclosed: Yes
Contiguous: Yes
Permitted: Yes
Wet space: No
Addition: No
Conversion: No

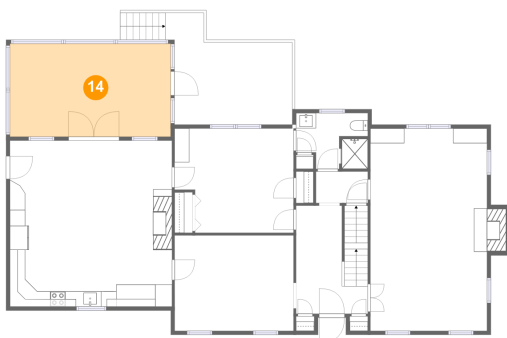
13 Floor 2 - Bedroom



Dimensions: 15'6" x 13'7"
Area: 196 sq. ft
Counted as living area: Yes

Heated: Yes
Finished: Yes
Enclosed: Yes
Contiguous: Yes
Permitted: Yes
Wet space: No
Addition: No
Conversion: No

14 Floor 2 - Covered Porch



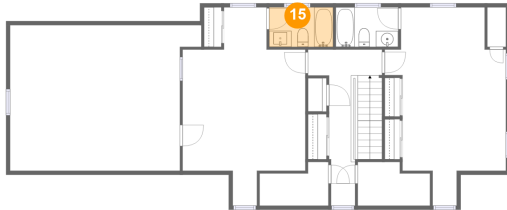
Dimensions: 20'11" x 12'1"
Area: 253 sq. ft
Counted as living area: No

Heated: No
Finished: Yes
Enclosed: No
Contiguous: Yes
Permitted: Yes
Wet space: No
Addition: No
Conversion: No

Home report

1931 Parkland Drive, Bedford Hills, Lynchburg, Lynchburg city,
Virginia, United States, 24503

15 Floor 3 - Bath



Dimensions: 8'0" x 4'11"
Area: 40 sq. ft
Counted as living area: Yes

Heated: Yes
Finished: Yes
Enclosed: Yes
Contiguous: Yes
Permitted: Yes
Wet space: Yes
Addition: No
Conversion: No

16 Floor 3 - Bedroom



Dimensions: 15'2" x 24'10"
Area: 272 sq. ft
Counted as living area: Yes

Heated: Yes
Finished: Yes
Enclosed: Yes
Contiguous: Yes
Permitted: Yes
Wet space: No
Addition: No
Conversion: No

17 Floor 3 - Bath

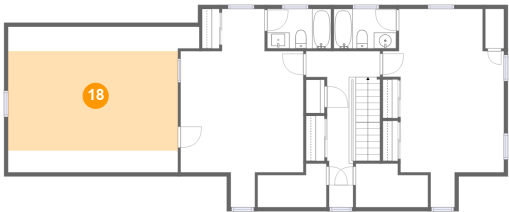


Dimensions: 7'10" x 4'11"
Area: 39 sq. ft
Counted as living area: Yes

Heated: Yes
Finished: Yes
Enclosed: Yes
Contiguous: Yes
Permitted: Yes
Wet space: Yes
Addition: No
Conversion: No

1931 Parkland Drive, Bedford Hills, Lynchburg, Lynchburg city,
Virginia, United States, 24503

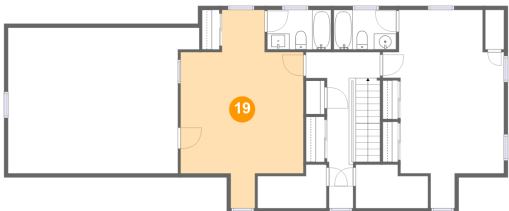
18 Floor 3 - Attic



Dimensions: 21'3" x 18'3"
Area: 265 sq. ft
Counted as living area: No

Heated: No
Finished: No
Enclosed: Yes
Contiguous: Yes
Permitted: Yes
Wet space: No
Addition: No
Conversion: No

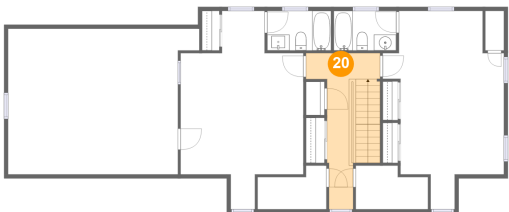
19 Floor 3 - Primary Bedroom



Dimensions: 15'5" x 24'10"
Area: 275 sq. ft
Counted as living area: Yes

Heated: Yes
Finished: Yes
Enclosed: Yes
Contiguous: Yes
Permitted: Yes
Wet space: No
Addition: No
Conversion: No

20 Floor 3 - Hall



Dimensions: 9'3" x 19'7"
Area: 117 sq. ft
Counted as living area: Yes

Heated: Yes
Finished: Yes
Enclosed: Yes
Contiguous: Yes
Permitted: Yes
Wet space: No
Addition: No
Conversion: No