


2750 Gleneagles Road, Wedgewood Forest, Salem, Salem city, Virginia, United States, 24153



Property summary


 **1** Garages

 **4** Bedrooms

 **3** Bathrooms

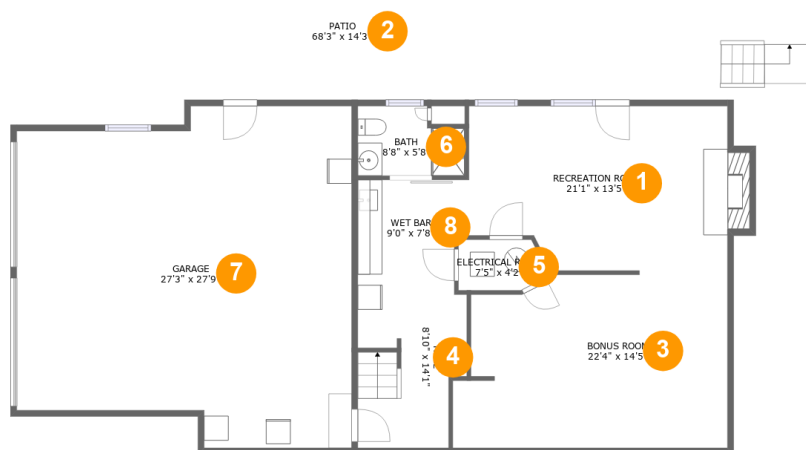
 **1** Half baths

 **3** Floors

 **3,767** Gross living area sqft

 **5,912** Total sqft

2750 Gleneagles Road, Wedgewood Forest, Salem, Salem city, Virginia, United States, 24153



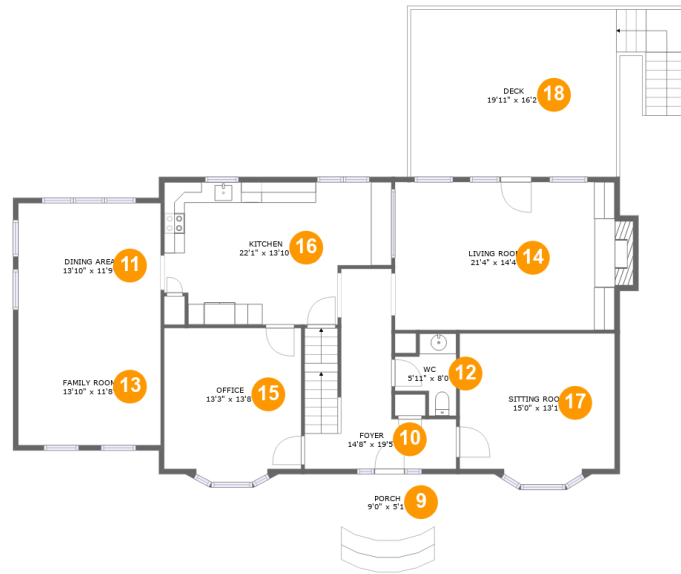
Room dimensions

Floor 1

Total sqft: 2499 Living area: 867

#		Dimensions	sqft	Counted as living area
1	Recreation Room	21'1" x 13'5"	276 sq. ft	Yes
2	Patio	68'3" x 14'3"	869 sq. ft	No
3	Bonus Room	22'4" x 14'5"	294 sq. ft	Yes
4	Hall	8'10" x 14'1"	113 sq. ft	Yes
5	Electrical Room	7'5" x 4'2"	27 sq. ft	No
6	Bath	8'8" x 5'8"	44 sq. ft	Yes
7	Garage	27'3" x 27'9"	681 sq. ft	No
8	Wet Bar	9'0" x 7'8"	66 sq. ft	Yes

2750 Gleneagles Road, Wedgewood Forest, Salem, Salem city, Virginia, United States, 24153



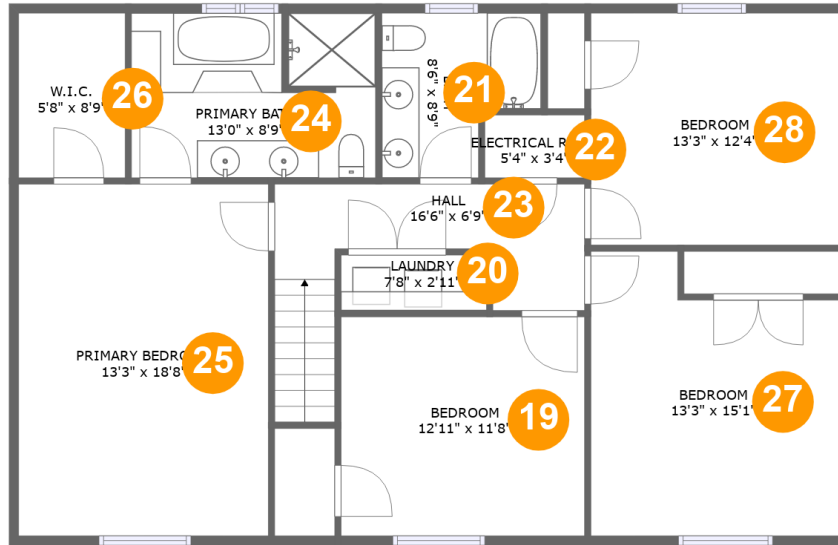
Room dimensions

Floor 2

Total sqft: 2127 Living area: 1632

#		Dimensions	sqft	Counted as living area
9	Porch	9'0" x 5'1"	86 sq. ft	No
10	Foyer	14'8" x 19'5"	171 sq. ft	Yes
11	Dining Area	13'10" x 11'9"	163 sq. ft	Yes
12	WC	5'11" x 8'0"	34 sq. ft	Yes
13	Family Room	13'10" x 11'8"	161 sq. ft	Yes
14	Living Room	21'4" x 14'4"	317 sq. ft	Yes
15	Office	13'3" x 13'8"	181 sq. ft	Yes
16	Kitchen	22'1" x 13'10"	267 sq. ft	Yes
17	Sitting Room	15'0" x 13'1"	197 sq. ft	Yes
18	Deck	19'11" x 16'2"	377 sq. ft	No

**2750 Gleneagles Road, Wedgewood Forest, Salem,
Salem city, Virginia, United States, 24153**



Room dimensions

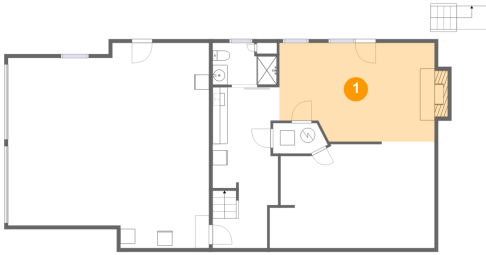
Floor 3

Total sqft: 1286 Living area: 1268

#		Dimensions	sqft	Counted as living area
19	Bedroom	12'11" x 11'8"	151 sq. ft	Yes
20	Laundry	7'8" x 2'11"	23 sq. ft	Yes
21	Bath	8'6" x 8'9"	62 sq. ft	Yes
22	Electrical Room	5'4" x 3'4"	18 sq. ft	No
23	Hall	16'6" x 6'9"	102 sq. ft	Yes
24	Primary Bath	13'0" x 8'9"	111 sq. ft	Yes
25	Primary Bedroom	13'3" x 18'8"	248 sq. ft	Yes
26	W.I.C.	5'8" x 8'9"	50 sq. ft	Yes
27	Bedroom	13'3" x 15'1"	178 sq. ft	Yes
28	Bedroom	13'3" x 12'4"	163 sq. ft	Yes

**2750 Gleneagles Road, Wedgewood Forest, Salem,
Salem city, Virginia, United States, 24153**

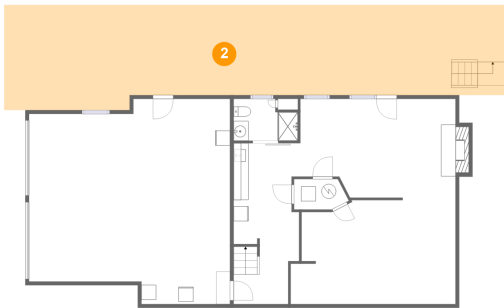
1 Floor 1 - Recreation Room



Dimensions: 21'1" x 13'5"
Area: 276 sq. ft
Counted as living area: Yes

Heated: Yes
Finished: Yes
Enclosed: Yes
Contiguous: Yes
Permitted: Yes
Wet space: No
Addition: No
Conversion: No

2 Floor 1 - Patio

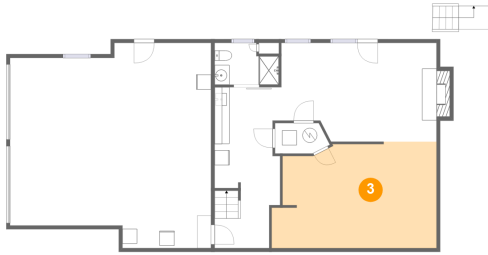


Dimensions: 68'3" x 14'3"
Area: 869 sq. ft
Counted as living area: No

Heated: No
Finished: Yes
Enclosed: No
Contiguous: Yes
Permitted: Yes
Wet space: No
Addition: No
Conversion: No

2750 Gleneagles Road, Wedgewood Forest, Salem, Salem city, Virginia, United States, 24153

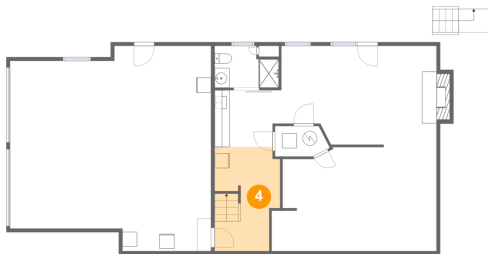
3 Floor 1 - Bonus Room



Dimensions: 22'4" x 14'5"
Area: 294 sq. ft
Counted as living area: Yes

Heated: Yes
Finished: Yes
Enclosed: Yes
Contiguous: Yes
Permitted: Yes
Wet space: No
Addition: No
Conversion: No

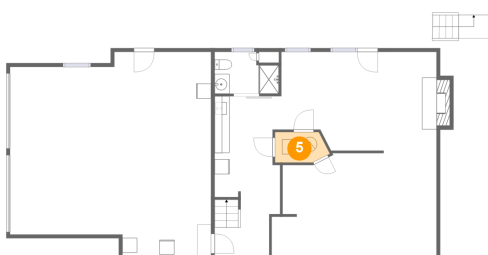
4 Floor 1 - Hall



Dimensions: 8'10" x 14'1"
Area: 113 sq. ft
Counted as living area: Yes

Heated: Yes
Finished: Yes
Enclosed: Yes
Contiguous: Yes
Permitted: Yes
Wet space: No
Addition: No
Conversion: No

5 Floor 1 - Electrical Room

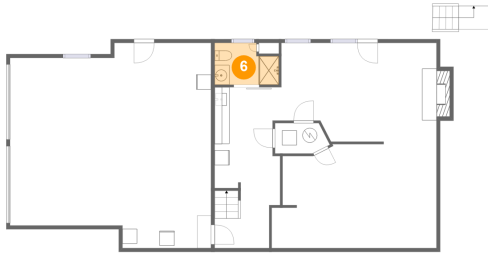


Dimensions: 7'5" x 4'2"
Area: 27 sq. ft
Counted as living area: No

Heated: No
Finished: No
Enclosed: Yes
Contiguous: Yes
Permitted: Yes
Wet space: No
Addition: No
Conversion: No

2750 Gleneagles Road, Wedgewood Forest, Salem,
Salem city, Virginia, United States, 24153

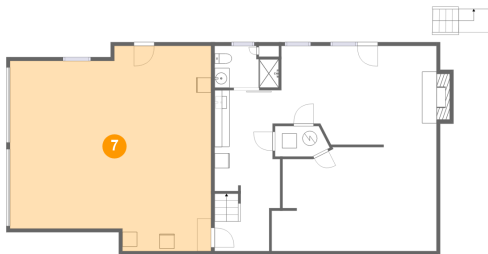
6 Floor 1 - Bath



Dimensions: 8'8" x 5'8"
Area: 44 sq. ft
Counted as living area: Yes

Heated: Yes
Finished: Yes
Enclosed: Yes
Contiguous: Yes
Permitted: Yes
Wet space: Yes
Addition: No
Conversion: No

7 Floor 1 - Garage



Dimensions: 27'3" x 27'9"
Area: 681 sq. ft
Counted as living area: No

Heated: No
Finished: No
Enclosed: Yes
Contiguous: Yes
Permitted: Yes
Wet space: No
Addition: No
Conversion: No

8 Floor 1 - Wet Bar

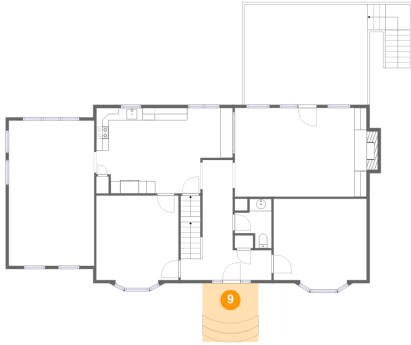


Dimensions: 9'0" x 7'8"
Area: 66 sq. ft
Counted as living area: Yes

Heated: Yes
Finished: Yes
Enclosed: Yes
Contiguous: Yes
Permitted: Yes
Wet space: No
Addition: No
Conversion: No

2750 Gleneagles Road, Wedgewood Forest, Salem, Salem city, Virginia, United States, 24153

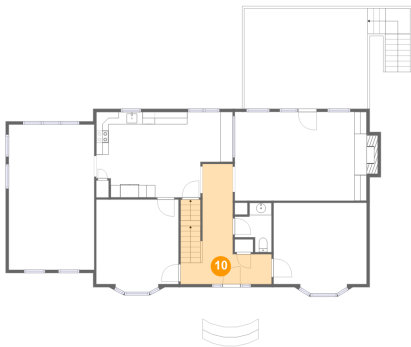
9 Floor 2 - Porch



Dimensions: 9'0" x 5'1"
Area: 86 sq. ft
Counted as living area: No

Heated: No
Finished: Yes
Enclosed: No
Contiguous: Yes
Permitted: Yes
Wet space: No
Addition: No
Conversion: No

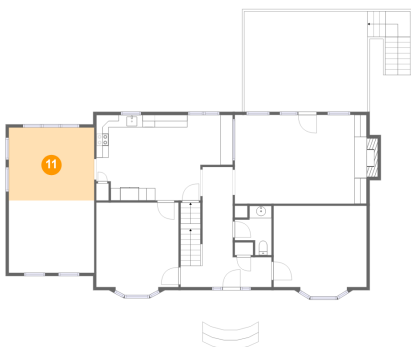
10 Floor 2 - Foyer



Dimensions: 14'8" x 19'5"
Area: 171 sq. ft
Counted as living area: Yes

Heated: Yes
Finished: Yes
Enclosed: Yes
Contiguous: Yes
Permitted: Yes
Wet space: No
Addition: No
Conversion: No

11 Floor 2 - Dining Area

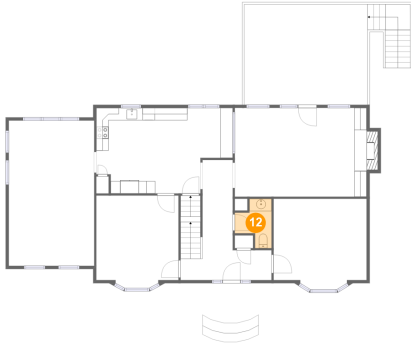


Dimensions: 13'10" x 11'9"
Area: 163 sq. ft
Counted as living area: Yes

Heated: Yes
Finished: Yes
Enclosed: Yes
Contiguous: Yes
Permitted: Yes
Wet space: No
Addition: No
Conversion: No

2750 Gleneagles Road, Wedgewood Forest, Salem,
Salem city, Virginia, United States, 24153

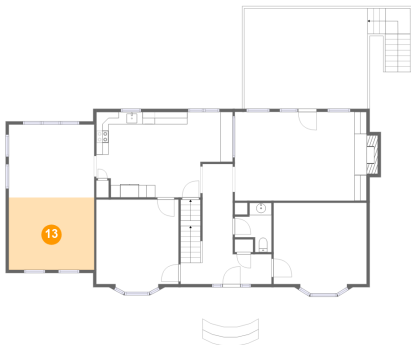
12 Floor 2 - WC



Dimensions: 5'11" x 8'0"
Area: 34 sq. ft
Counted as living area: Yes

Heated: Yes
Finished: Yes
Enclosed: Yes
Contiguous: Yes
Permitted: Yes
Wet space: Yes
Addition: No
Conversion: No

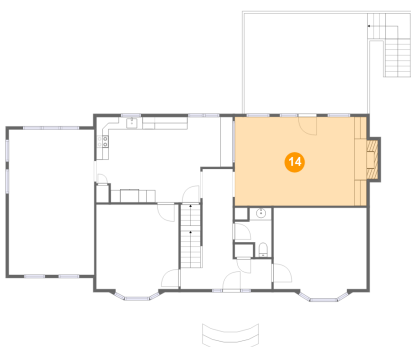
13 Floor 2 - Family Room



Dimensions: 13'10" x 11'8"
Area: 161 sq. ft
Counted as living area: Yes

Heated: Yes
Finished: Yes
Enclosed: Yes
Contiguous: Yes
Permitted: Yes
Wet space: No
Addition: No
Conversion: No

14 Floor 2 - Living Room



Dimensions: 21'4" x 14'4"
Area: 317 sq. ft
Counted as living area: Yes

Heated: Yes
Finished: Yes
Enclosed: Yes
Contiguous: Yes
Permitted: Yes
Wet space: No
Addition: No
Conversion: No

**2750 Gleneagles Road, Wedgewood Forest, Salem,
Salem city, Virginia, United States, 24153**

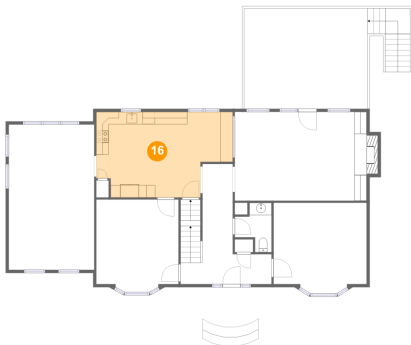
15 Floor 2 - Office



Dimensions: 13'3" x 13'8"
Area: 181 sq. ft
Counted as living area: Yes

Heated: Yes
Finished: Yes
Enclosed: Yes
Contiguous: Yes
Permitted: Yes
Wet space: No
Addition: No
Conversion: No

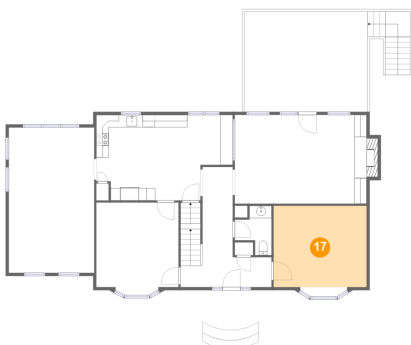
16 Floor 2 - Kitchen



Dimensions: 22'1" x 13'10"
Area: 267 sq. ft
Counted as living area: Yes

Heated: Yes
Finished: Yes
Enclosed: Yes
Contiguous: Yes
Permitted: Yes
Wet space: No
Addition: No
Conversion: No

17 Floor 2 - Sitting Room

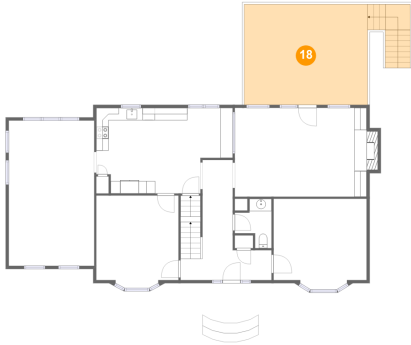


Dimensions: 15'0" x 13'1"
Area: 197 sq. ft
Counted as living area: Yes

Heated: Yes
Finished: Yes
Enclosed: Yes
Contiguous: Yes
Permitted: Yes
Wet space: No
Addition: No
Conversion: No

**2750 Gleneagles Road, Wedgewood Forest, Salem,
Salem city, Virginia, United States, 24153**

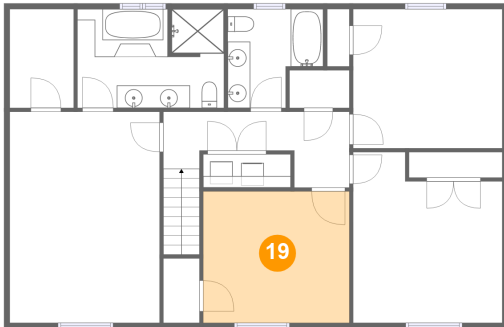
18 Floor 2 - Deck



Dimensions: 19'11" x 16'2"
Area: 377 sq. ft
Counted as living area: No

Heated: No
Finished: Yes
Enclosed: No
Contiguous: Yes
Permitted: Yes
Wet space: No
Addition: No
Conversion: No

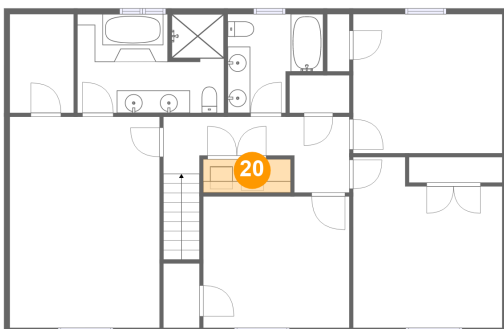
19 Floor 3 - Bedroom



Dimensions: 12'11" x 11'8"
Area: 151 sq. ft
Counted as living area: Yes

Heated: Yes
Finished: Yes
Enclosed: Yes
Contiguous: Yes
Permitted: Yes
Wet space: No
Addition: No
Conversion: No

20 Floor 3 - Laundry

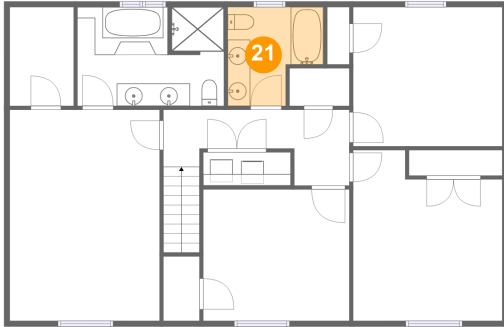


Dimensions: 7'8" x 2'11"
Area: 23 sq. ft
Counted as living area: Yes

Heated: Yes
Finished: Yes
Enclosed: Yes
Contiguous: Yes
Permitted: Yes
Wet space: No
Addition: No
Conversion: No

2750 Gleneagles Road, Wedgewood Forest, Salem,
Salem city, Virginia, United States, 24153

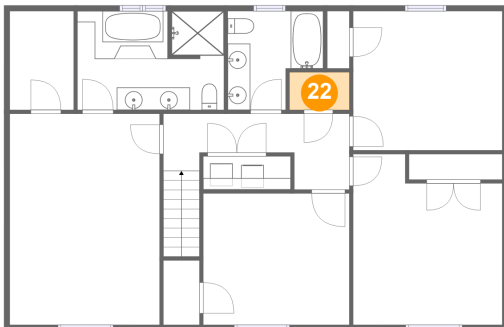
21 Floor 3 - Bath



Dimensions: 8'6" x 8'9"
Area: 62 sq. ft
Counted as living area: Yes

Heated: Yes
Finished: Yes
Enclosed: Yes
Contiguous: Yes
Permitted: Yes
Wet space: Yes
Addition: No
Conversion: No

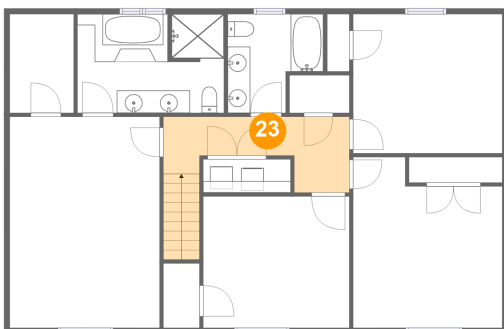
22 Floor 3 - Electrical Room



Dimensions: 5'4" x 3'4"
Area: 18 sq. ft
Counted as living area: No

Heated: No
Finished: No
Enclosed: Yes
Contiguous: Yes
Permitted: Yes
Wet space: No
Addition: No
Conversion: No

23 Floor 3 - Hall

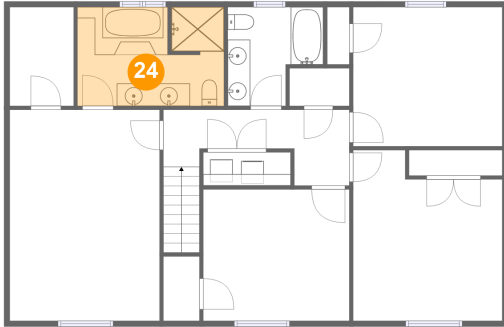


Dimensions: 16'6" x 6'9"
Area: 102 sq. ft
Counted as living area: Yes

Heated: Yes
Finished: Yes
Enclosed: Yes
Contiguous: Yes
Permitted: Yes
Wet space: No
Addition: No
Conversion: No

2750 Gleneagles Road, Wedgewood Forest, Salem,
Salem city, Virginia, United States, 24153

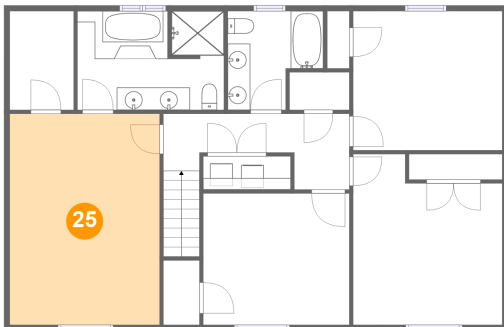
24 Floor 3 - Primary Bath



Dimensions: 13'0" x 8'9"
Area: 111 sq. ft
Counted as living area: Yes

Heated: Yes
Finished: Yes
Enclosed: Yes
Contiguous: Yes
Permitted: Yes
Wet space: Yes
Addition: No
Conversion: No

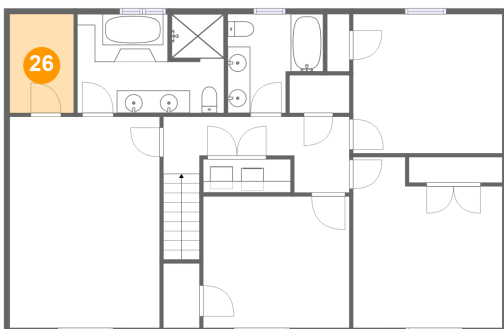
25 Floor 3 - Primary Bedroom



Dimensions: 13'3" x 18'8"
Area: 248 sq. ft
Counted as living area: Yes

Heated: Yes
Finished: Yes
Enclosed: Yes
Contiguous: Yes
Permitted: Yes
Wet space: No
Addition: No
Conversion: No

26 Floor 3 - W.I.C.

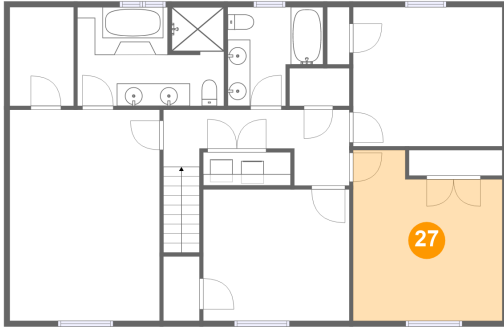


Dimensions: 5'8" x 8'9"
Area: 50 sq. ft
Counted as living area: Yes

Heated: Yes
Finished: Yes
Enclosed: Yes
Contiguous: Yes
Permitted: Yes
Wet space: No
Addition: No
Conversion: No

**2750 Gleneagles Road, Wedgewood Forest, Salem,
Salem city, Virginia, United States, 24153**

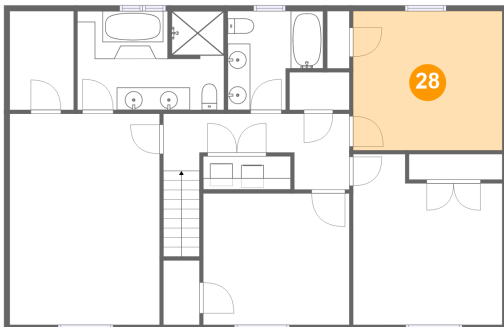
27 Floor 3 - Bedroom



Dimensions: 13'3" x 15'1"
Area: 178 sq. ft
Counted as living area: Yes

Heated: Yes
Finished: Yes
Enclosed: Yes
Contiguous: Yes
Permitted: Yes
Wet space: No
Addition: No
Conversion: No

28 Floor 3 - Bedroom



Dimensions: 13'3" x 12'4"
Area: 163 sq. ft
Counted as living area: Yes

Heated: Yes
Finished: Yes
Enclosed: Yes
Contiguous: Yes
Permitted: Yes
Wet space: No
Addition: No
Conversion: No